

Go Yards

page 2)
 ing consuming
 choice to mostly
 1400 lb slaughter
 nday 30 50-31.25
 comparable gr-
 90 lb steers-late
 Two loads, at
 60 feedlot mates
 the Wd last wk,
 eads high-choice,
 choice and prime

steers-all wghts. Mon. 28.50 -
 29.50; many loads compara-
 ble cattle at 29-30.50, few
 loads up to 31, high choice
 950 lb. steers 29 50, loadlots
 mixed-choice and prime 1300
 -1525 lb steers 29-29.75 most
 good to avg. choice prime
 steers late 26-28.75, Numer-
 ous loads borderline high-go-
 od and low-choice 27.25-27-
 75. Few loads choice 1075 -
 1150 lb. steers at 28 25-28 50
 carrying a good grade end.
 Load good 1290 lb. northern
 fed holstein steers 26.75. Few

good 1550 lb. Holstein steers
 25.50, standard steers 23.50 -
 25.75, mostly 24-25.50, few
 800 lb. utility steers late 24.

Load prime 1173 lb. heifers
 early 29.75, load choice to
 mostly prime 1075 lb. wghts.
 late same price, loadlots mix
 ed-choice and prime heifers
 28 75-29 25, most good to h-
 gh-choice late 25.50-28 75
 utility and standard heifers
 21-25

Standard cows late 22-23 -
 50, late bulk util. and coml
 cows 18 50-21.50, canners and
 cutters closed at 16-20, most-
 ly 16 50-19 50 although few
 light canners as low as 15.

Utility and commercial bul-
 ls closed at 23-26; few cho-
 ice vealers 33-34, standard
 and good 25-32, cull and util.
 15-24; medium and good 500
 -650 lb. stock steers 26-30 50
 good and choice 725-925 lb.,
 feeding steers 26-30.50 two
 loads choice 725 and 785 lb.
 wghts. 30 and 30.50, several
 loads mixed-good and choice
 900-925 lbs. 27.25-27.35, lo-
 ad medium 900 lb. feeding
 steers 25, few common 650
 lb. stockers, 22, load choice
 703 lb. feeding heifers 27.75.

Experiments by USDA and
 Okla. Exp. Station show that
 insecticide treated seeds flow
 through drills slightly slow-
 er than untreated seed. Thus,
 fewer seeds per acre, rather
 than reduced germination,
 may be the cause of smaller
 crop stands from treated
 seed. Adjust drills to allow
 for the flow reduction after
 treating seed, the USDA ad-
 vises.

Give Lancaster Farming
 advertising a chance to work
 for you,

**Control Flies
 On The Farm**

The house fly is a danger
 to the health of man and
 animals because it carries
 and spreads disease germs
 that may be in the material
 it breeds in, feeds on, or
 works on.

Chester County Agent
 Robert A. Powers, Jr. ex-
 plains this fly breeds most
 extensively in various man-
 ures, garbage, and ferment-
 ing crop wastes.

If disease germs are in
 these materials or in others
 they frequent, the flies get
 them on their hairy legs,
 feet, and in their digestive
 tracts.

If the flies have access to
 man's food, they contaminate
 it by walking over it and by
 leaving their excreta on it.

To control the house fly,

Powers suggests doing these
 things:

Eliminate the breeding
 places.

Follow sanitary practices
 constantly.

Dispose of manure and
 garbage properly every
 week.

Keep garbage and other
 refuse under cover

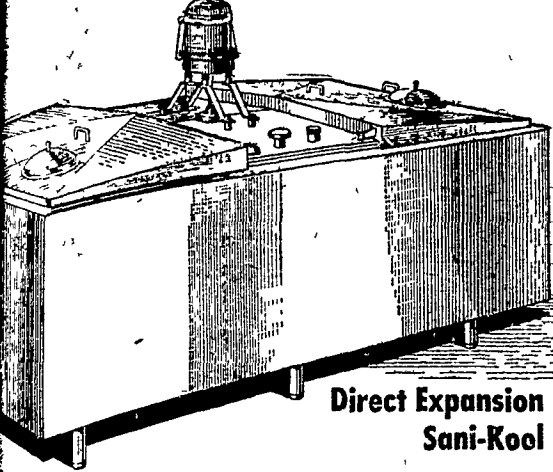
Screen windows and doors
 of the home, dairy barns, and
 milkrooms.

Use proper insecticide and
 use it correctly.

To kill flies quickly inside
 the home, use a space spray
 (or aerosol) that contains py-
 rethrin or organic thiocyan-
 ates, or the combination of
 these.

To kill flies in and around
 farm buildings apply a sur-
 face spray to the inside of
 buildings where livestock is
 kept; also, spray areas where
 flies may collect on the out-
 side.

**JAMESWAY®
 Jet Cooling System
 Milk Fast at Low Cost**



Direct Expansion
 Sani-Kool

**HIGHEST IN VALUE
 M. S. SENSENIG**

PH. EL 4-0691



USE

FLY KILLERS...

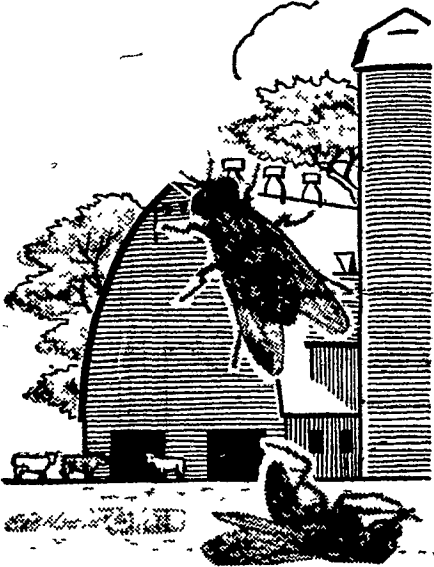
**DIRECTLY ON
 ANIMALS**

Ch's Liveness Spray R-11
 hours on dairy animals

12 E
 e with fuel oil 10:1 on back
 obbers

25 W. P.
 e with water 4 lb. in 25 gal. as
 direct spray

50
 as a dry rub on dairy animals
 ot on dairy animals



... IN BUILDINGS

• Korlan 12 E
 1:12 for 3-4 week residual

• Diazinon 25 E
 1:25 for 3-4 week residual

• Diptex Bayer L-13/59
 As bait dry or wet

• Ortho Fly Killer Dry Bait
 Just scatter thinly on floor

Get Your Supply at These Dealers

- | | | |
|--|--|--|
| all
B Zimmerman | Intercourse
Charles B. Hooper | Peach Bottom
C. E. Wiley & Son |
| le
an's Hardware | Kirkwood
L. H. Jackson
Myer's Store | Quarryville
Musser's Mill, R. D. 1
Ross H. Rohrer & Sons |
| bia
er Farms
St & Lanc. Ave. | Lancaster
Lancaster County
Farm Bureau
L. H. Brubaker
350 Strasburg Pike | Ronks
Lester A. Singer |
| er Supply Co.
H Matz | Lincoln
Galen Hardware | Schoeneck
Brehm & Enck |
| htown
or Bros, R. D. #1
ners Supply Co., | Lititz
Eby's Mill, Inc. | Stevens
Snader's Mill, Mt. Airy |
| ersville
pment Co
#2 | Manheim
Cassel's Mill, Inc.,
R. D. #1
N. G. Hershey & Son | Strasburg
I. B. Graybill & Son |
| an's Feed Mill,
#3
Wenger & Sons | Millersville
Millersville Supply Co. | Washington Boro
Ament's Hardware,
Nissley's Farm Service |
| Bros,
ama's Hardware | Mountville
Kauffman Bros., | West Willow
West Willow
Farmers Assn., Inc. |
| met Bros
ware | Parkesburg
A. H. Keen & Son | Willow Street
Dombach Bros. |

J. C. EHRLICH CO.

Distributor

736 - 38 East Chestnut St. Lancaster, Ph. EX 7-3721

**WHY
 Keystone Leghorn
 CHICKS**

WILL COST YOU LESS

1. Locally Owned and Operated
2. Breeding Flocks Are All Within Lanc. Co.
3. We do our Own Breeding Work
4. No National Advertising
5. No Long Distant Hauling of Hatching Eggs or Chicks
6. No Middle Man or Franchise Kick-Backs

Pa. U. S. Approved Pullorum-Typhoid Clean

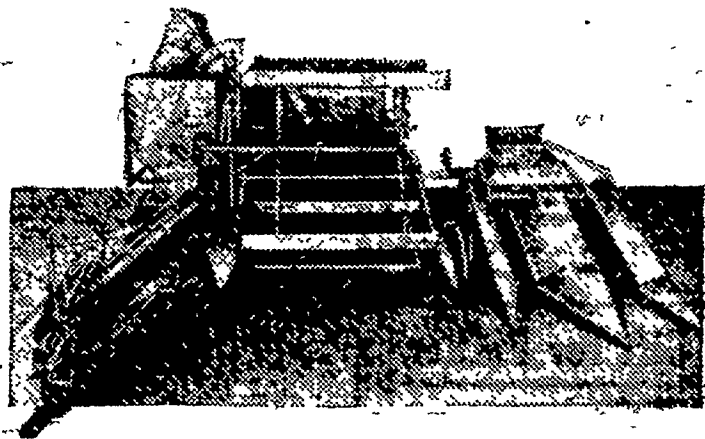
KEYSTONE HATCHERY

Rep. Daniel R. Myer, Ph. Leola OL 6-2243

Hatchery: Ph. Leola OL 6-7851

Farm: Ph. Ephrata RE 3-6179

**LOOK AHEAD
 to all your harvests**



No matter what your harvest — grain, seed,
 beans or corn — you can count on the BIG-
 BIN 66 . . . now, more than ever, truly an
 ALL-CROP Harvester.

There's a new, two-row corn head that
 brings to the cornfield such ALL-CROP bene-
 fits as:

- Dependable, wide-flow feeding — keeps harvest moving
 - Gentle, rubber-on-rubber shelling — less crackage
 - Exclusive saw-tooth wind valves — cleaner sample in the bin.
- Harvest more, have more in '58. See the 66 ALL-CROP Harvester now.

ALL-CROP is an Allis-Chalmers trademark.

ALLIS-CHALMERS

Sales & Service

Snavelys Farm Service

New Holland, Pa.

L. H. Brubaker
 Lancaster, Pa.

Nissley Farm Service
 Washington Boro, Pa.

Mann & Grumelli Farm Serv.
 Quarryville, Pa.

R. S. Weaver
 Stevens, Pa.

L. H. Brubaker
 Lititz, Pa.

N. G. Myers & Son
 Rheems, Pa.

JUNE IS DAIRY MONTH!