

## At Lancaster Yards Steer Quality Declines

James E. O'Hara,  
In Charge, Market News Branch  
WEEKLY REVIEW—

Trading was slow for slaughter steers this week but all other classes were moderately active. The quality of slaughter steers was not as good as in past week's prime grade absent.

The receipts will total about 625 head more than last week's 3329 head count. The supply included 65 per cent slaughter steers and 30 per cent stockers and feeders. Compared with last week's close slaughter steers were 50-1.00 lower, and rather scarce after Mon. Cows were steady to 25 lower, and bulls closed steady. Stockers and feeders sold weak to 50 lower with most of the loss on weights over 800 lb.

Bulk of choice slaughter

## Stoltzfus Cow Tops Red Rose

Results of April testing of the Red Rose DHIA show that a registered Holstein, Thyrsa, owned by Mrs. Mary B. Stoltzfus, Morgantown, completed with the highest 305 days lactation. Thyrsa produced 15,435 lbs. of milk, 694 lbs of butterfat with a 4.4 test.

Second high lactation was completed by another registered Holstein, Ethel, owned by Henry E. Kettering, Lititz. R3 Ethel produced 15,742 lbs of milk, 643 lbs of BF, with a 4.1 test.

The Albert R. Frey herd, Manheim R2, had the highest butterfat average in April. The 20-cow herd averaged 1492 lbs of milk, 59 lbs of fat with a 3.7 test.

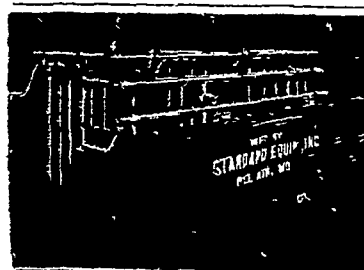
The Paul M. Yeagley herd of 10 cows averaged 1574 lb of milk, 59 lb of fat with a 3.8 test.

## LOANS

FOR ANY FARM PURPOSE  
MADE THE FARMER'S  
WAY

Lancaster  
Production  
Credit Ass'n.

411 W. Roseville Rd  
Lancaster, Pa.  
Ph. Lanc. EX 3-3921



**STANDARD  
Equipment, Inc.**  
Announces Its  
**8%  
BIG  
Spring Discount  
SALE**

ON  
All-New  
Barn Cleaner  
Easy-All Comfort  
Stalls  
SALE CLOSES  
MAY 31

**GLENN H. HERR**  
MANHEIM, R. D. 1  
Ph. Landisville TW 8-8391

steers sold for 28.50-30.50, a few lots high-choice weighing 1050-1372 lb. made 30.50-31.00. Good to low-choice went for 26.25-28.75.

A few small lots good grade heifers brought 26.00-27.75. Utility and coml. bulls ranged from 23.00-26.00, with good grade fed bulls selling at 25.75-27.50. Cutter and utility cows made 18.50-22.50, and coml. grade cows sold up to 23.50. Canners & low cutters brought 16.75-18.50.

Good and choice 800-1050 lb. feeders sold for 28.00-30.28.25. Good and choice 550-800 lb stock steers brought 30.00-36.00, while medium and good made 28-30.25. A few lots good grade stock calves went back to the farms at 32.00-36.00.

Receipts in the calf division were about half of last week's 801 head count. Trading was active, as vealers were 1.00 lower. Good and choice vealers made 29.00-36.00, choice and prime vealers sold for 36.00-38.00, with a few to 39.00. Mon. Standard and low good made 24.00-29.00, with utility selling down to 19.00.

Trading was moderately active on about 1950 head of hogs. Barrows and gilts and sows steady. U. S. 1-3 grade 190-230 lb. barrows & gilts made 18.00-18.50, several lots No. 3 ranged from 17.50-17.75. Hogs more uniform for weight and grade including 1-2 grade 190-220 lb. butchers made 18.50-19.25, a few lots mostly No. 1 sold at 19.50-24.00. 260 lb butchers made 16.75-17.75; 300-600 lb. sows sold for 10.00-14.00.

Sheep receipts about 300 head less than last week's 646 head count. Trading active. Spring slaughter lambs steady with lesser quality considered. Good and choice lambs made 24.00-27.50, utility lambs sold down to 20.00. Cull to good shorn slaughter ewes commanded 4.00-7.00.

## Chicago Gattle Steers Hit Year's Low

USDA MARKET  
NEWS SERVICE

CHICAGO, MAY 28  
WEEKLY REVIEW—

CATTLE—Supplies three per cent less than last week and three per cent larger than the same year-ago week. Very uneven distribution of receipts, better than 60 per cent of the weeks total supply appeared on Monday when the run of nearly 27,000 head was the largest for any day since October last year and 5,000 head greater than the previous largest one-day run so far this year. Tuesdays supply of only 3,500 head smallest for the day since October 1957 and Wednesdays run smallest for the day in over a month. Around 75 per cent of the supply slaughter steers, 15 per cent heifers and six per cent cows, these percentages about the same as the previous week.

Prime steers continued very scarce, only around two per cent prime but an estimated 65 per cent of the steer supply choice, largest for any week since January and compared with the 40 per cent choice in late March and early April when the percentage of good grade steers was much larger than normal, average weight of slaughter steers promising to be a little lighter than last weeks average of 1162 lbs. Bulk of the heifer supply good and choice grades.

Slaughter steers opened weak to fully 1.00 lower, mostly 50-75 lower as the result of Mondays big run, high choice and prime steers later regained the grounds lost Monday and closed the week mostly steady, however, steers average choice and below 50-1.00 lower for the week.

Heifers closed steady to 50 lower, mostly steady to

(Turn to page 5)

## New Holland

## Hvy. Steers Off a Lip

Thursday's beef market calves tallied 786 cattle and 264 calves. Steer market steady; cows strong to 50 higher; bulls steady, and prime calves \$1 lower with all other vealers steady.

Prime butcher steers — NONE; choice - \$30 - 31.50; good - 28 - 30, and plain to medium - 25.75 - 28.

Choice heifers - \$26 - 27.85; good - 24 - 26 and pl. - med. - 21-24.

Good bulls - \$26 - 28.35 & pl. - med. - 24.50 - 26.

Good butcher cows - \$22 - 23.25; med. - 20 - 22, canners and cutters - 17.50 - 20

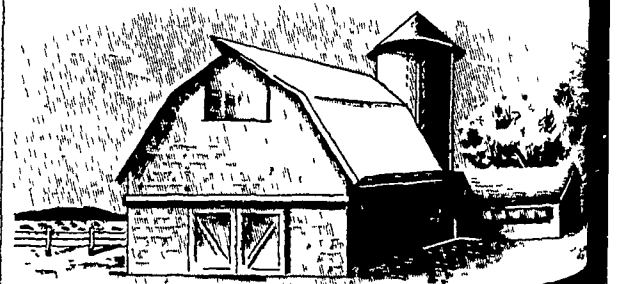
Stocker and feeder steers - \$26 - 28.

Choice - prime butcher pound.

Fresh Holsteins 420; Guernseys and other kinds. Stock bulls and stock heifers. The May 28 mule sale had a steady market. Mules were 50-100 lower. Pony mares and geldings 95-100 lower. Riding horses driving horses. All killers at

AS A RESULT OF A DESIRE OF BO  
FARMERS and BUYERS  
EVERY WEDNESDAY  
THERE WILL BE A FULL LINE OF  
SLAUGHTER CATTLE  
OFFERED FOR SALE  
AT THE  
LANCASTER UNION STOCK YARD  
Your cooperation will be appreciated.  
For further information consult your commission agent.  
STOCKERS & FEEDERS on hand daily.

EVERYTHING...  
FOR  
IRRIGATION  
BARTON  
• SPRINKLER EQUIPMENT  
• SPARE PARTS • SERVICING  
Complete IRECO Irrigation Systems  
The Barton Company is your headquarters for all irrigation equipment. We have a large stock of fully used sprinklers at only \$3 each.  
DON'T WAIT — IRRIGATE!  
A complete Barton irrigation system is the sure insurance of better crops, greater yields and lower costs. We'll engineer the system to meet your needs. Call or write us today.  
**LEWIS W. BARTON**  
KRESSON RD., HADDONFIELD, NEW JERSEY  
Ph: HA 9-6500 At Night: HA 9-6300  
Leaders in Irrigation Since 1938



DAIRY BUILDING WALLS  
GLAZED FACED BLOCK ARE  
SMOOTH AND NEVER NEED PAINT

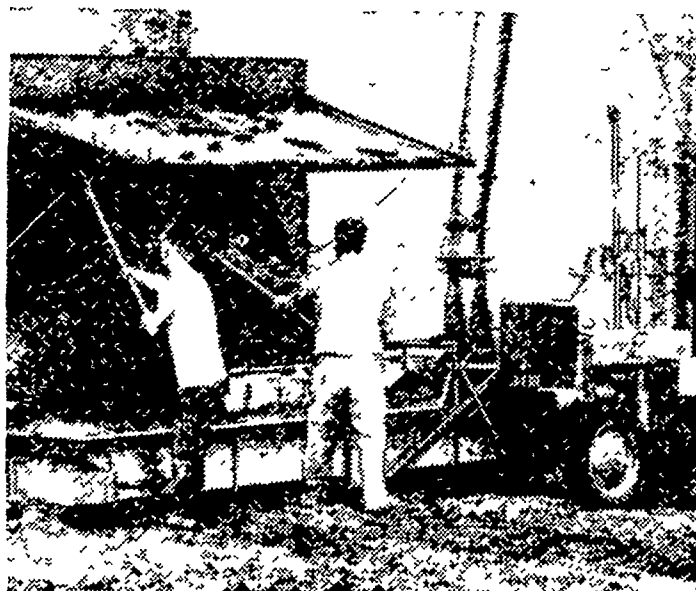
Here is the ideal building material for milking dairy barns — glazed faced concrete blocks — completely finished wall with a hard, smooth interior which never needs painting and a sturdy exterior all in one block laying operation.

Yes, now you can eliminate all the expensive time and trouble required to keep your dairy buildings shining clean. With glazed face block, you can clean down your walls and forget them. The hard, smooth face is permanent — will last as long as the building. Many progressive dairymen have already built their buildings using glazed faced block.

May we send you, free of charge, information on how you, too, can benefit from dairy buildings built with glazed face block?

**Nitterhouse Concrete Products Co.**  
CHAMBERSBURG, PA.

## Looking for capacity at the silo?



Watch blow-and-throw action at work! High-tonnage capacity of the Allis-Chalmers blower comes from special curved blades that blow as well as throw... nine inch delivery pipe that handles heavy volume without clogging... and adjustable-speed rubberized belt conveyor.

With PTO drive, triple V-belts and oil bath gear box unit cushion shock loads. Belt drive or auxiliary Allis-Chalmers tractor engines available.

Ask us about the Allis-Chalmers plan to finance your time purchase of farm equipment.

**ALLIS-CHALMERS**   
SALES AND SERVICE

**Snavelys Farm Service**  
New Holland, Pa.

**L. H. Brubaker**  
Lancaster, Pa.

**Nissley Farm Service**  
Washington Boro, Pa.

**Mann & Grumelli Farm Serv.**  
Quarryville, Pa.

**R. S. Weaver**  
Stevens, Pa.

**L. H. Brubaker**  
Lititz, Pa.

**N. G. Myers & Son**  
Rheems, Pa.

JUNE IS DAIRY MONTH!