

Lancaster Poultry Exchange

Waviest Run For Exch.

At market in the Lancaster Poultry Exchange Thursday results per pound for broilers, as a result of 380 birds crossed of 24 lots, with 16 were withdrawn. The sudden price roller average on a was 16.33, on a of 46,500 broil- 16.87 on a 17.2- Capettes ranged on 15 lots, with There were eight 50 leghorn fowl 9-2-10 2 s corresponding 825 head offered head selling, 10 NO SALE in resis- 1.07 broiler avg. Capettes ranged 7.74 is the complete tion, with seller, parantheses, amt. age in wks and and price. E WV-white van - indian river Mt-white mount- Capettes; P-pullets L-F-leghorn fo- ngs and SX-sil-

ver cross. 1. Stauffer & Sons (S.M. Fisher), 3100 WV, 8-6, S.E. Davis, 16.6. 2. D. E. Horn (Fred Bingham), 5000 WV, 9-4, NO SALE, 16.2 bid. 3. Same, 16 bid. 4. SAME ALL 5. George Neuman, 3000 WV, 9-3, NO SALE, 16.8 bid. 6. Same, 270 WV, 9-3, NO SALE, 16.7 bid 7. Same, 4000 WV, 9-3, NO SALE, 16.7 bid 8. Same, 2600 WV, 9-3, NO SALE, 16.6. 9. Miller & Bushong (Luther R Beaver), 6300 WV, 9, College Hill, 16.6. 10. Same, 9-2, Davis, 16.9 11. Same, 6325, 9-2, Col. Hill, 16.3 12. Same, 5100 WV, 9, Col Hill, 16.6 13. M&B (Harold M Herr), 5500 WV, 9-2, H W Longacre, 16.7. 14. Same, 5500 IRW, 9-2, Longacre, 16.8. 15. M&B (Stephen Notestine), 8000 WV, 9, NO SALE, 16.3 bid. 16. Same, Pa Dutch Farm, 16.4. 17. Same, 16.5. 18. M&B (Emmet P Shreffler), 6000 WV, 9-2, Allen Clark, 16.8. 19. M&B (Rodney Miller), 1100 WV, 9-3, Col Hill, 16.7. 20. Same, WV, 9-3, C. F. Manbeck, 16.7 21. M&B (Elmer Garber), 7000 WV, 9, Meader's Poultry, 16.6. 22. Same, 5000 WV, Pa. Dutch, 16.6. 23. M&B (Christ M Smith), 6000 IRW (Turn to page 5)

Delmarva - Georgia

Mkts. Close At 15-16

Friday's Delmarva market closed lower, with heavy offerings Total of 850,300 head, incl 695,600 at ESPGE 15.60 - 17, 67% at 16 - 16.40. Georgia closed with estimated Fri and Sat slaughter of 176 million head. Thurs Exchange offerings - 513,400; sales - 331,600 at 14.9 - 15.7, mostly 14 - 15.5. Fri. at farm - 15 - 15.5, 1,236,000, 98% at 15; FOB plants - 74,000 at 16. Delmarva had weekend and early Monday trading of 808,300 head, incl. 585,300 at Eastern Shore Exch, with a range of 16.50-18, 60% at 16.50-17.40 Tuesday trading had 257,600 head with 7% at 17, 69% undetermined. Market weaker on Wed, with heavy offerings and fair demand. Total of 1,005,100, incl. 641,000 at ESPGE, 15-17.75, 63% at 16.5-17.3. Thursday trading found market still weaker, with heavy offerings and fair demand, 835,900 head, incl, 656,700 at ESPGE, 15.80-17.50, mostly, 16.10-16.70. Delmarva broiler feed ratio for week ending May 8 was 3.5, compared with 3.6 of previous week and 4.2 of last year. Broilers averaged 17.19 with mash \$99.24. Georgia opened stronger on Monday, with estimated Monday slaughter at 1,418,000. Georgia Poultry Exch. Fri. sale had 352,500 head sell-

Weekly New York Egg Mkt.

From Monday, May 11th to Friday, May 15th
Monday Tuesday Wednesday Thursday Friday
Nearby Whites

Ext Fcy.					
Hywts	27 -	27 -	26 3/4-27	25 -	25 -
Med	22 -	21 1/2-21 1/2	21 1/4-21 1/2	20 -20 1/2	20 -20 1/2
Pullets	17 -	16 -	16 -	16 -	16 -
P-wecs	13 -	13 -	13 -	13 -	13 -

Nearby Browns

Ext. Fcy.					
Hywts	28 -	26 1/2-27	25-26 1/2	25 -	25 -25 1/2
Med.	21 -	21 1/2-22	21 1/2-22	21 1/2-22	21 1/2-22
Pullets	17 -	17 -	17 -	17 -	17 -
P-wecs	13 -	13 -	13 -	13 -	13 -

Midwestern Mixed

Ext. Fcy					
Hywts	26 1/4-	26 1/4-	25 1/2-26	25 -	25 -
Med	20 -	20 -	20 -	20 -	20 -
Pullets	17 -	17 -	17 -	17 -	16 -
Stds	25 -	25 -	25 -	23 -	23 1/2-
Checks	21 1/2-	21 1/2-	21 1/2-	21 1/2-	21 -

Midwestern Whites

Ext Fcy					
Hywts	26 3/4-	26 1/2-	26 -26 1/2	25 -25 1/4	25 -25 1/2
Med.	22 -	21 1/2-	11 1/2-	20 -20 1/2	20 -20 1/2
Pullets	17 -	16 -	16 -	16 -	16 -

Midwestern Browns

Ext. Fcy.					
Hywts	27 1/2-	26 1/2-27	26 -26 1/2	25 -	25 -

FRIDAY TREND—Market continued highly unsettled with consumptive buying interest unimproved, but some broadening in speculative activity. Price levels largely unchanged, except on top western whites and top nearby browns Spot supplies on nearbys continued extremely liberal.

Copyrighted 1958 By Uner-Barry Co.

ing at 15.7-17.3. Monday totals at farms—15-16.5. 74% at 15, 852,000; FOB plants—16-17, 254,000. Tues. exch. sale had 503,400 head at 15.4-15.9 Tues totals: at farms—1,225,000, mostly 15-15.9; FOB plants—138,000, 16-17. Wed. Exch. sale had 477,300 sold on 645,100 offerings, with 389,500 at 15.4-15.7.

Wed totals: at farms—14.6-15.8, 1268,000; FOB plants—50,000 at 16 Thurs 620,000 at farm sales at 15-15.5, 96% at 16; 63,000 FOB plants at '6

CHAIN SAW SERVICE CENTER

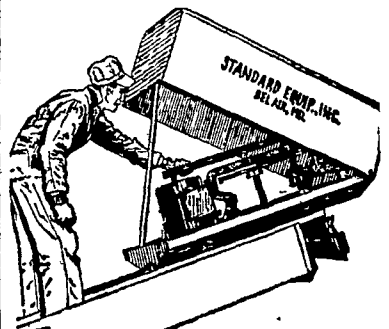
New & Used
Snavelly's Farm Service
NEW HOLLAND EL 4-2214

LOANS

FOR ANY FARM PURPOSE
MADE THE FARMER'S WAY

Lancaster
Production
Credit Ass'n.

411 W. Roseville Rd
Lancaster, Pa.
Ph. Lanc. EX 3-3921



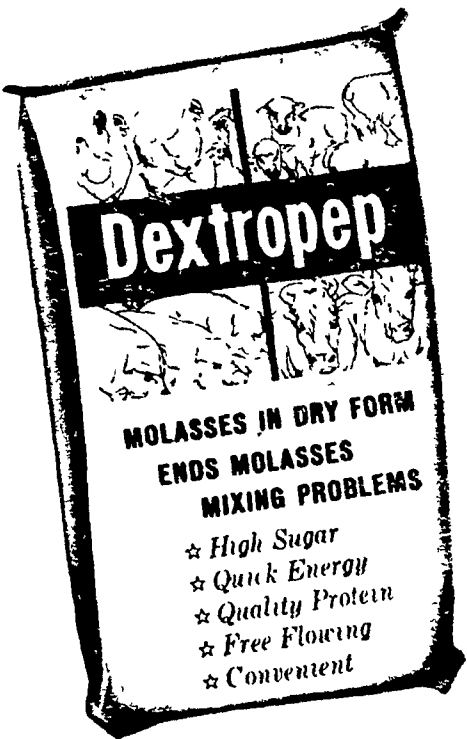
STANDARD
Equipment, Inc.
Announces Its

8%
BIG
Spring Discount
SALE

ON
All-New
Barn Cleaner
Easy-All Comfort
Stalls
SALE CLOSES
MAY 31

GLENN H. HERR
MANHEIM, H. D. 1
Ph. Landisville TW 8-8391

EXTROPEP



GE PRESERVATIVE

MONEY because it is a concentrated preservative. Recommended use only 50 lbs. per ton of silage.

EDDING VALUE to the silage because it contains over 80% total digestible nutrients.

ES THE NATURAL NUTRIENTS in the grass reducing run off because one part corn oil absorbs six parts water.

See Your Dealer Today
For Special Prices!

RTHMORE FEEDS

Ressler & Son Glenn H. Herr
Paradise Manheim, R.D. 1
Gasburg OV 7-3931 Landisville TW 8-8391

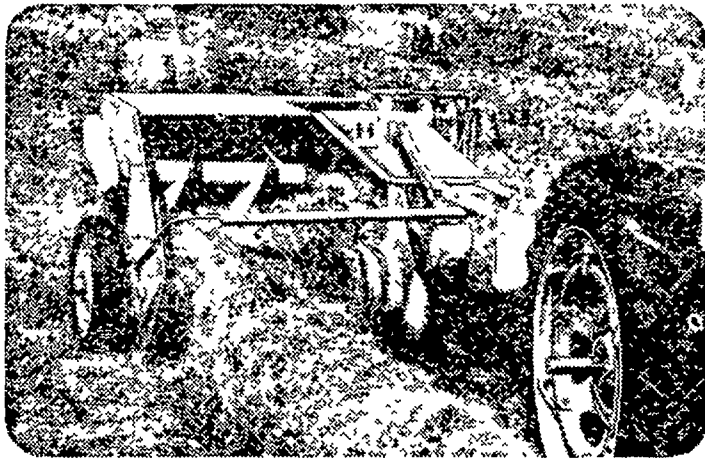
M. Sensenig Clem E. Hooper
Hinkletown Intercourse
Data REpublic 3-2009 Ph. SOuthfield 8-3431

ugh & Bleacher Hiestand, Inc.
D. 2. Conestoga Marietta
3086 or TR 2-3555 Ph. HAZel 6-9301

bers & Smith Weigel, Bros.
West Grove, Pa. Oxford, Pa.
UNderhill 9-8546 Phone 63-J
xford 532-J4

Additional
Markets
On Page 5

Call Today to SAVE
MORE HAY!



There's still time to put the
extra capacity

of the NEW McCORMICK®
NO. 46 BALER to work for you

See how you can outbale them all! Save on first cost... save on baling costs, too. You've never seen such hay-hungry capacity... and high-speed baling pace. Put a new No. 46 baler to work for you now... there's still time to save more hay! Come in today! Ask for a Free demonstration!



McCormick Farm Equip. Store
EPHRATA

Cope & Weaver Co.
WILLOW STREET

Kauffman Bros.
MOUNTVILLE

C. B. Hooper
INTERCOURSE

D. L. Diem & Sons, Inc.
LITITZ

J. Paul Nolt
GAP

C. E. Wiley & Son
QUARRYVILLE - WAKEFIELD

J. B. Hostetter & Sons
MOUNT JOY