

REVIEWS

(From page 7)
ON MARCH 1 of this year, there were an estimated 6.3 million hogs on Canadian farms, about 29 percent above the estimate. Sow farrowings in Canada from December 1958 through May are now estimated at 758,500 head, which would be 22 percent above the same period a year earlier, but slightly below the previous estimate of 765,000 head.

Kenneth E. Porter, Wash. Boro, RI, and Richard P. Lorah, Denver RI, were named as recipients of 1959 PP&L agricultural scholarships to Penn State this week. The county duo were among three high school students awarded the grants.

Porter, Penn Manor senior, will enroll in general agriculture and Lorah, Cocalico Union senior plans to major in Agriculture Education.

Latest Crop Reporting Board figures show that stocks of grains continued at record levels as of April 1. Stocks of wheat, at 1,540 million bushels on April 1, were the largest of record for that date—more than ONE-THIRD larger than a year earlier, and a sixth larger than previous record holdings in 1956.

A total of 2,992 million bushels of corn were on hand, a new record and seven percent above one year earlier. Rye stocks, at 182 million bushels were almost a fifth larger than last year, and 33 percent above average. A total of 667 bushels of oats were stored on April 1, nearly 12 percent above last year and a record.

Barley stocks were at 288 million bushels, compared with 263 million bushels, last year and again a new record. Sorghum grain stocks totaled 613 million bushels, compared with the previous record of 425 million last April 1.

The eastern tent caterpillar, so evident this time of year on wild cherry and other host trees, is easily controlled if proper measures are taken soon enough. All you have to do is spray or dust the tent area and the limbs of the trees that are

Benson Calls Egg Promotion Meet in D.C.

A special meeting of producer and trade representatives has been called by Secretary of Agriculture Ezra Taft Benson to discuss the marketing situation of eggs and to explore plans for an accelerated merchandising program.

The meeting will be held at the U. S. Department of Agriculture in Washington, D. C., at 10 a. m. Monday, May 18.

"Egg producers of the Nation are facing a critical marketing situation, and indications are that heavy supplies will continue for some time," Secretary Benson said in announcing the meeting.

"Every effort should be made to obtain maximum consumer purchases of this excellent food product."

Representatives of the principal poultry and egg trade associations and farm organizations have been invited to participate in the meeting.

USDA officials will offer their cooperation to the industry and distribution trade representatives in a promotional effort to increase the movement of eggs through trade channels.

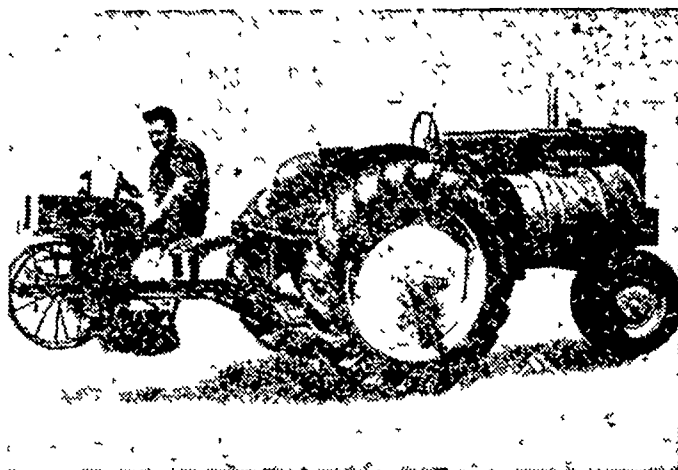
Egg prices have fallen sharply with the last two months because of a larger than normal supply. Although per capita egg consumption is higher this year than in 1958, production has increased even more.

occupied by the insects. One of the best insecticides for this is DDT. Use 50% wettable powder at the rate of three level tablespoons to a gallon of water or use a five

per cent DDT dust. Control of these pests early means less damage and fewer caterpillars next year.

The USDA has announced an agreement with the Uni-

ted Arab Republic to finance the sale of \$23.4 million worth, including ocean shipping, of U.S. farm products for Egyptian pounds. Commodities included are tobacco, cottonseed or yellow corn, grain barley, frozen fat dry milk and



SEE THE GENUINE
Mechanical Transplanter

With All The Features The Farmer Wants and Buys

- New amazing Flo-Check Water Valve with Magic Air Control that assures uniform water supply to plants regardless of water level in the barrel.
- New Manual shut off with roller reset on valve.
- Positive action, self cleaning, Neoprene plant grippers.
- Bronze Oilite main bearings.
- Large adjustable plant trays.
- Quick Change spacing gears.
- Galvanized water tank.

"Truly America's Best Engineered Transplanter"
 Made only by the Mechanical Transplanter Co.

SOLD AND SERVICED BY
LESTER A. SINGER

LANCASTER, PA. Phone Strasburg OV 7-3226

IT PREVENTS... ERADICATES TOBACCO BLUE MOLD and WILDFIRE

Phytomycin*

Mathieson's new LIQUID antibiotic

- LONGER LASTING
- EASY AND ECONOMICAL TO USE
- SUPERIOR TO WETTABLE POWDERS BECAUSE:

1. Goes into 100% solution
2. No caking—forms better, more uniform mixture

SAFE TO PLANTS



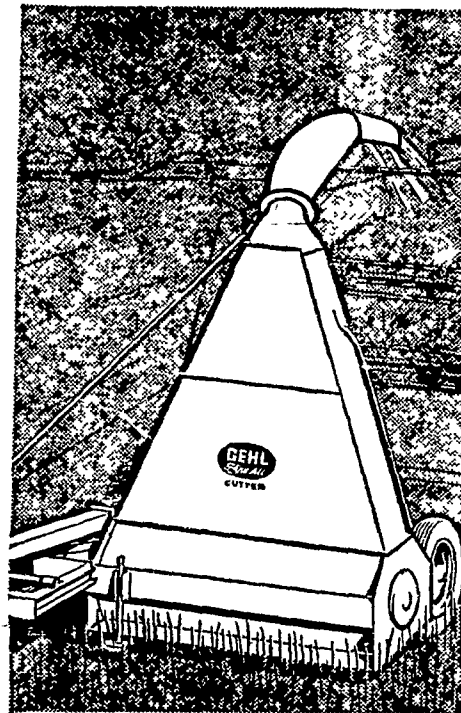
PHYTOMYCIN is manufactured by E. R. Squibb & Sons, A Division of Olin Mathieson Chemical Corporation

DEALER OR

J. C. Ehrlich Co.

738 EAST CHESTNUT STREET
 LANCASTER, PA. PHONE EX 7-3721

New Shred-All Cutter



the all-purpose cutter

The rugged-built Gehl Shred-All is a new low-time-saver for many jobs! Three types available—the Basic Cutter unit is perfect for shredding beet tops, weeds and brush and for many other jobs; and your choice of two deflectors which chop and blow green-crop feed—even windrowed hay and straw! Either deflector is controlled from the tractor seat—one for rear loading, and the other for side-or-rear loading. Be sure to check the Gehl Shred-All. It's built with famous Gehl quality!

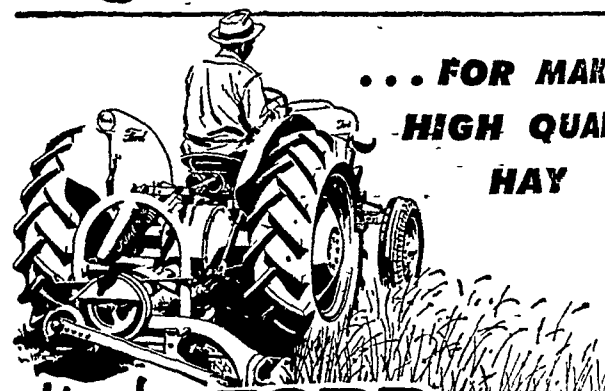


come in... let's make a deal

SNAVELY'S FARM SERVICE

NEW HOLLAND Phone EL 4-8721

Right from the start



... FOR MAKING HIGH QUALITY HAY

it's the **FORD** Rear-Attached **MOWER**

You can be sure that your hay making will be off to a fast start if you mow with a new Ford Rear Attached Mower. It's sturdy and dependable... cuts fast and clean... you get the job done on time, before over-maturity reduces you of much of the hay's feed value.

Convenient, easy-to-make adjustments, undersized plain edge knife sections, heavy duty or standard guard all contribute to the excellent performance of this mower in a wide variety of crops and conditions... and it's off your tractor in a jiffy.

Models for all Ford Tractors and some competing tractors with similar 3-point hitch. Available with 6' or 7' bar. Ask for a demonstration.

See us now for top HAY TOOL VALUE

Allen H. Matz
 Denver
 Phone AN 7-6502



Elizabethtown
Farmers Supply Inc.
 Elizabethtown
 Phone EM 7-1341

Sauder Bros
 New Holland
 Phone EL 4-8721

Conestoga
Farm Service
 Park Ave., Quarry
 Phone ST 6-2500
 Haverstick Bros
 Columbia Pike, Lancaster
 Phone EX 2-2500