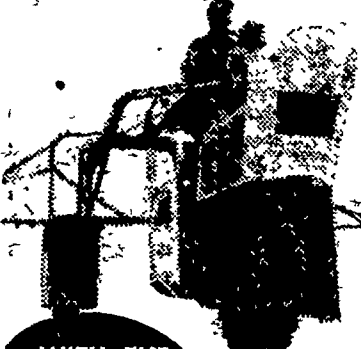


**● Milk Monopoly**  
(From page 7)

They do not know his first name, and legion are the farmers who do not believe they care."

The article concluded. "Unless Congress acts now to restore economic justice, farmers will continue to go broke; farm surpluses will continue to pile up; the independent manufacturers will continue to vanish; the Big Four will continue to extend their domination and influence over the dairy industry; and the housewife may, one day, look back wistfully to the time when the price of milk was only 30 cents a quart."

**HIT A NEW HIGH  
IN CROP PRODUCTION  
AND PROFITS...**



WITH THE  
New 1959  
**HAHN  
HI-BOY**  
Slope-Type  
Fenders  
Optional  
AGAIN  
...IN 1958  
more farmers bought  
**HAHN HI-BOY** than all  
other makes combined!

The original and only HI-BOY high-clearance sprayer, now greater than ever with 49 new advances! Specially designed for liquid fertilizer application, with aluminum-steel tank and boom. Gives sure insect and weed control—no waiting for special wind and weather conditions. Four new '59 models to fit every need. Come in and see them now!

Distributed by  
**Engineering  
Equipment Co.**  
4021 North 6th Street  
HARRISBURG, PA.  
SALES & SERVICE  
**SNAVELY'S  
FARM SERVICE**  
NEW HOLLAND  
Phone EL 4-2214  
**NISSLEY  
FARM SERVICE**  
WASHINGTON BORO  
Phone AT 5-9117



**BURNS  
CLEANER!**

No smoke or odor with Texaco Fuel Chief Heating Oil. Contains Additive A-200, protects against rust and deposits.

**GARBER  
OIL CO.**  
105 Fairview St.  
MOUNT JOY, PA.  
Ph. OL 3-2021

Latest USDA figures show that from July, 1958 through February 1959, Argentina exported 1,595,000 metric tons of wheat, compared with 1,331,000 tons in the same eight month period a year earlier. Argentine corn exports for the eight month period

were more than 2½ times as large as a year earlier. Exports of barley, oats and rye are reported to be down some what from a year earlier.

Recent studies by the USDA show that for irrigation to pay for farmers in Connecticut they must increase

production by an average of at least a half ton of hay per acre annually to cover increase costs. Illinois research indicates that supplemental irrigation is more profitable for growers of speciality crops than it is for field crop producers.

State Certified  
**Strawberry**  
H. F. HOUSE  
EX 2-0247  
Big Spring Farm

**FOR GREATER YIELD**

Pasture, Small Grain  
and Corn

**MATHIESON**



**ANHYDROUS AMMONIA  
82% NITROGEN**

Increase your yields and your profits.  
Easily applied. Saves Time. Saves Labor.

**DEALERS**

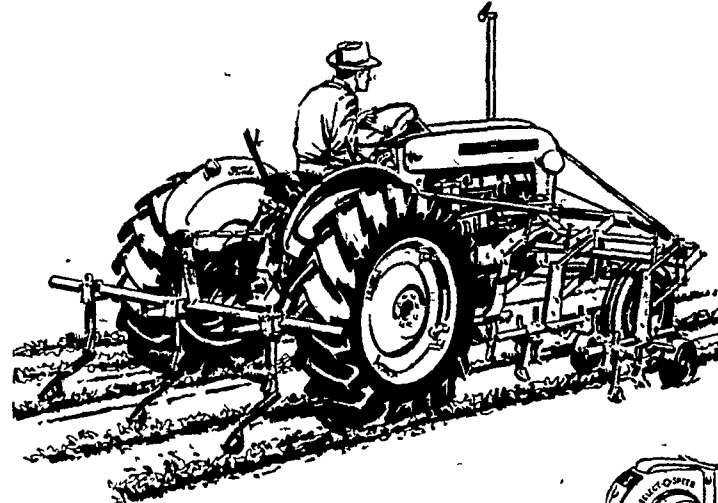
**HIESTAND INC.**  
MARIETTA RD1 Ph. HA 6-9301  
**CLARENCE RUTT**  
NEW HOLLAND Ph. EL 4-8797



**L. H. BRUBAKER**

350 Strasburg Pike Ph. Lanc. EX 3-7607  
Lititz RD3 Strasburg OV 7-6002  
MA 6-7766

**NOW! FORD ROW CROP  
DIESEL TRACTORS  
with SELECT-O-SPEED**



**"ON-THE-GO" POWER SHIFTING**

You don't need to clutch...  
just a light finger touch!

Yes, with Ford Select-O-Speed, you can shift to any of 10 forward, 2 reverse speeds while on the go and under load. A touch of the finger is all that's required to down-shift for the tough spots, shift up when the going gets easier. And Select-O-Speed's completely independent PTO lets you start or stop the PTO shaft at any time while on-the-go. You'll do more work—faster, easier and at lower cost than ever before with Ford Select-O-Speed.

**STOP IN AND TEST DRIVE A NEW  
FORD SELECT-O-SPEED TRACTOR**



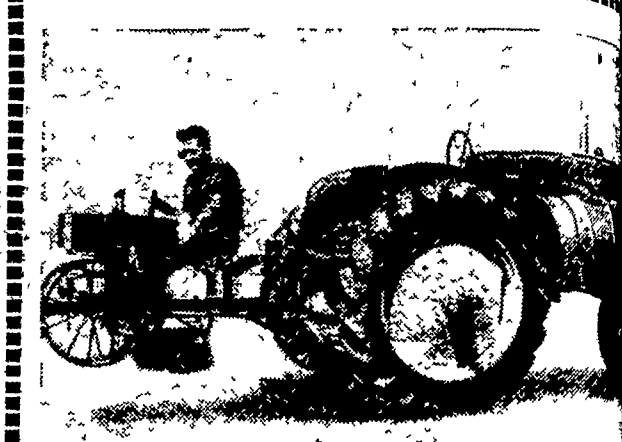
**Allen H. Matz**  
Denver  
Phone AN 7-6502

**Elizabethtown  
Farmers Supply Inc.**  
Elizabethtown  
Phone EM 7-1341

**Conestoga  
Farm Service**  
Park Ave., Quarryville  
Phone ST 6-2597

**Sauder Bros**  
New Holland  
Phone EL 4-8721

**Haverstick Bros.**  
Columbia Pike, Lancaster  
Phone EX 2-5722



**SEE THE GENUINE**

**Mechanical Transplanter**

With All The Features The Farmer Wants and

- New amazing Flo-Check Water Valve with Positive Air Control that assures uniform water supply to plants regardless of water level in the field.
- New Manual shut off with roller reset on valve.
- Positive action, self cleaning, Neoprene plant grippers.
- Bronze Oilite main bearings.
- Large adjustable plant trays.
- Quick Change spacing gears.
- Galvanized water tank.

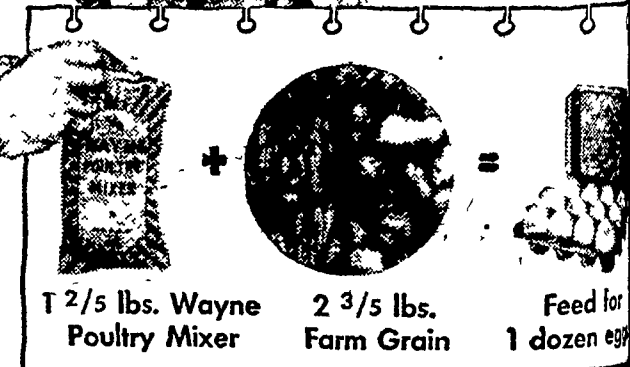
"Truly Americas Best Engineered Transplanter  
Made only by the Mechanical Transplanter Co."

**SOLD AND SERVICED BY  
LESTER A. SINGER**

RONKS, PA. Phone Strasburg OV 7-6002



**DO YOU KNOW**  
 $1\frac{2}{5} + 2\frac{3}{5} = 12$   
**HERE'S HOW**



**Let Us Explain How**

**WAYNE Concentrates**  
will help you increase egg profits!

**MILLERSVILLE SUPPLY CO.**  
Millersville, Pa.

**ROSS C. ULRICH, JR.**  
R.D. 2, Peach Bottom, Pa.

**ABERDEEN MILLERSVILLE**  
R.D. 2, Elizabethtown

**J. K. STAUFFER & SON**  
Lawn and Bellaire, Pa.

**ROHRER'S MILLERSVILLE**  
R.D. 1, Ronks, Pa.

**SUNSHINE FARM SUPPLY**  
Lititz, Pa.

**LIME VALLEY**  
R.D. 1, Willow Street

**H. M. STAUFFER & SON'S, Inc.**  
Witmer - Ronks - Leola, Pa.