

Go Yards
(page 2)

ly prime 1010 lb
5, several loads
and mixed choice
25-1185 lb. wgt.
st good and choi
3-29 75, late bulk
small lots utility
d heifers 21-25,
ixed standard and
26
ard cows 22-23.50
commercial cows
te bulk canner
17-19 75 Utility
cial bulls closed
old up to 35 until
the top dropped
ales standard and
26-33. Few head
33, cull and util-
largely 15-25.

Load high good 490 lb. stock
steer calves 34.50, two loads
mixed good and choice 600-
650 lb. stock steers 32.50,
load high good 675 lb. wgt.
31.50, good and choice 835-
1000 lb feeding steers 27 -
29.25, few mixed medium
and good stocker and feeding
sters 26-26.75.

● **Del.-Geo.**

(From page 3)
Broilers averaged 16.23 and
mash \$99 70.
Georgia Poultry Exch. sold
359,400 head last Friday,
April 17, mostly 15 8-16 3
Monday sales mostly at 15
on private sale, also Tues-
day. Exch sold 289,200 on
Tues. at 16-17, mostly 16 5-
17, with private sales going
mostly 16 on Wed. with the

Exchange selling 315,500 at
16-16.7, mostly 16.4-16.6.

Thursday saw 386,200 on
the Exch. at 16.3 - 17, most-
ly 16 5 - 16.8, with private
sales going at same range,
but mostly 16. Friday had
private sales at 16

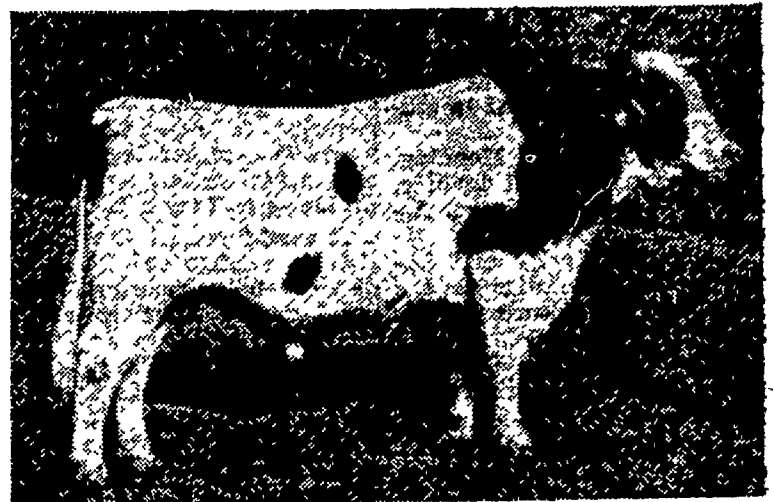
Week's volume: Mon. - 1-
006,000; Tues - 1,472,000;
Wed - 993,000, Thurs. - 1-
196,000; Fri. - 1,385,000.

(There were unconfirmed
reports from Delmarva broil-
er region of hatcherymen
gassing broiler chicks com-
ing off the incubator for lack
of market, even at give-
away prices.

Egg production per layer
in March for the U. S. aver-
aged 19 1 compared with 18
in March 1958. This was a
six per cent increase and a
March record

Patronize Lancaster Farm-
ing Advertisers.

**Top Holstein Sire Added By
County Breeding Service**



"Lyon Brook Wallie Queen"
considered one of the nations
top Holstein sires has been
made available to area dairymen
through the artificial
breeding service of William
H. Walker, Quarryville.

The six-year-old bull was
purchased at private sale by
Curtiss Improved Stud Ser-
vice, Gary, Indiana, with which
Walker is affiliated His
dam, "Hamaret Queen Pros-
pector," is the only cow in
the U.S. to have three pro-
duction records of more than
30,000 lbs. of milk on twice-
daily milking.

Classified "excellent" for
type and conformation, the
dam has a world record of
35,564 lbs. of milk and 1,319
lbs. of butter fat at 6½ years
of age.

"Wallie Queen" is a pro-
ven sire, with his first 10
daughters showing an increa-
se in production over their
respective dams, Walker ad-
ded

At its annual meeting in
Washington D C. recently,
the Federal Farm Credit Bo-
ard elected Earl H. Brock-
man of Idaho as chairman of
the board for a one-year
term.

Brockman is an Idaho far-
mer and retired general man-
ager of the Idaho Egg Pro-
ducers Co-op.

L. V. Ritter, general far-
mer from near Marked Tree,
Ark, was elected vice-chair-
man and J. M. Seby of Silver
Spring, Md., was re-elected
secretary

H&N
"BALANCED BREEDING"
Higher Over-all Income For YOU!

Successful poultrymen look for OVER-ALL in-
come when buying a particular laying hen. No
one profit characteristic . . . livability, egg size
egg quality . . . is the sole reason for their
success.

"BALANCED BREEDING" makes H&N "Nick
neck" Leghorns the most profitable birds you
can buy today. All profit characteristics are
fully weighed and balanced to produce a
laying hen of highest over-all performance.

To order this superior, profit-making bird write
DRIN FARMS TODAY . . . or call us at Mt.
Oldfield 3-9891.

10 to 20 week old started Pullets available

DRIN FARMS INC. MT. JOY, PA. RFD #1
Phone: Oldfield 3-9891

Harvest More Hay!
Kill ALFALFA WEEVILS With
PROVEN
HEPTACHLOR

GET YOURS NOW!

SPECIAL PRICES TO
CUSTOM SPRAYERS

P. L. ROHRER & BRO., INC.
SMOKETOWN Ph. Lanc. EX 2-2659

**May We Introduce You
TO THE
Finest In Mixed Feeds?**

Interested Fieldmen are anxious
to help and Assist you in De-
veloping A Profitable FEEDING
PROGRAM.

Our Farm Bureau PROFIT-
ABLE FEEDS in BULK:
SAVES TIME!
SAVES DOLLARS!
CONVENIENT, TOO!

This is what goes into a
bag of FARM BUREAU
Feed.

PROFITABLE PRODUCTION PERFORMANCE

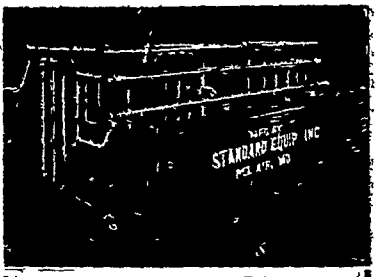
SERVICE SAVINGS SECURITY

- Ultra Modern Milling
- Rigid Quality Control
- Proper Formulation of Quality Ingredients.
- Research "know-how" from Our Own Research Centers.

LANC. COUNTY FARM BUREAU FEEDS

FOR PROMPT, . . . COURTEOUS SERVICE, . . . ALWAYS
Lancaster EX 4-0541, Manheim MO 5-2466 Q-ville ST 6-2126, New Holland EL 4-2146

State Certified
Strawberry Plants
H. F. HOUSER
EX 2-0247
Big Spring Farm



STANDARD Equipment, Inc.
Announces Its
12% BIG Spring Discount SALE
ON All-New
Barn Cleaner
Easy-All Comfort
Stalls
SALE CLOSES
APRIL 30

Cope & Weaver
WILLOW STREET
Ph. Lanc. EX 3-2824