

Lancaster Farming

Lancaster, Pa., Saturday, April 18, 1959

\$2 Per Year

Turkey Meat Test on June 18 To Special Ceremony

The ceremony is Ephrata. On June 18 when the Fifth Centennial Turkey Test comes to the Ephrata Hatchery, Ephrata. Attend the ceremony. Sec. of Agriculture, H. H. Hennrich, and Harry Kauffmann of the Hershey Co. will be the guests of honor. The ceremony will be held at the Ephrata Hatchery, Ephrata. Attend the ceremony. Sec. of Agriculture, H. H. Hennrich, and Harry Kauffmann of the Hershey Co. will be the guests of honor. The ceremony will be held at the Ephrata Hatchery, Ephrata.

March Egg Output Hits Record High for Month

Generally favorable March weather, along with continuing better management were largely responsible for the record 342 million egg production figures for the state in the month. Production was 14 per cent above February and 13 per cent above March of '58. An increased number of layers on hand also contributed to the increase in egg production. Average number of layers in production in the state during March was 17,784,000—four per cent more than a year ago. The Feb. to March seasonal decline in layers was only two per cent compared to a four per cent average. The record rate of lay for March of 19.25 eggs per hen

Ext. Marketing Meeting Is Mon.

Wesley Kniebel, Penna. Extension Service area marketing specialist, will be principal speaker for the Extension Marketing Meeting, on Monday at 8 p.m., in the SPABC meeting room.

Egg Producers Urged To Attend Market Study

Meeting Set For April 30 In Manheim Twp High School

Spokesmen for the Lancaster County Extension Service Poultry Assn., Feed and Egg dealers and hatcherymen have announced a jointly-sponsored county-wide "Egg Marketing Meeting" for 8 p.m. daylight saving time, April 30 in the Manheim Twp. high school auditorium. Special invitations are being mailed to more than 3,000 egg producers in the county, according to Harry S. Sloat, assoc. county agent.

"Purpose of the meeting is to study the impact of other egg producing areas on the market for Lancaster County eggs and look into ways for improving the currently dismal egg market," Sloat reports.

A spokesman for the County Assn. stated the sponsoring organizations for the meeting hope to have more than 1,000 county egg pro-

ducers on hand to hear the various reports to be given and participate in sessions afterward.

Principal speaker for the meeting will be Dr. Ralph Baker, professor of marketing research at Penn State. Dr. Baker will deliver an illustrated slide talk on his recent national tour, during which he made an intensive study of the egg industry.

(Turn to page 13)

Agency Cooperation Brings Conservation

An outstanding example of cooperation between public and quasi-public agencies and a Lancaster County farmer this month has resulted in a unique soil and water conservation project's completion.

The project involved contour-terracing of an 18-acre field on the Paul Rowe farm, Strasburg RD 1. However, in this particular instance, the three 650 foot terraces are absolutely straight and parallel.

The project started when Rowe told Abner Houseknecht, local Soil Conservation Service aide, of his troubles in water and soil loss on the field. He reported added trouble from having to carry water runoff under his 9,000 bird broiler house by a large pipe, due to the poor location of natural drainage.

The ideal thing, he told Houseknecht, would be to construct terraces to carry the water over a reconstructed road bank to the east of the field, instead of letting it run to the center and out the south side as it had been doing.

But, smoothing the high road bank and diversion of water into the road ditch would require approval of the state Highway Dept. If this could be secured, the bank dirt could be used in filling the low drainage area at the bottom of the field, permitting the terraces to be installed on straight, parallel lines. Rowe felt the latter would be necessary to his truck farming operation, if at all possible.

Houseknecht verified this theory with a survey and contacted Amos Funk, chairman of the county Soil Conservation District, and asked him to act as a go-between for Rowe with the highway department.

Department officials made an inspection of the site and quickly approved when they saw the general improvement—plus finding that in-

stallation of terracing would greatly reduce the amount of run-off into road ditches from the hillside.

Also, the reduced run-off will be distributed over a length of road ditch, rather than dumped in a silt-laden stream at one spot, Houseknecht reports. Water velocity will be greatly reduced throughout, because of the terrace system.

Much of the work is on an ASC-SCS cost-sharing agreement.

Rowe contracted an earth-mover with heavy equipment to smooth the road bank and make the fill.

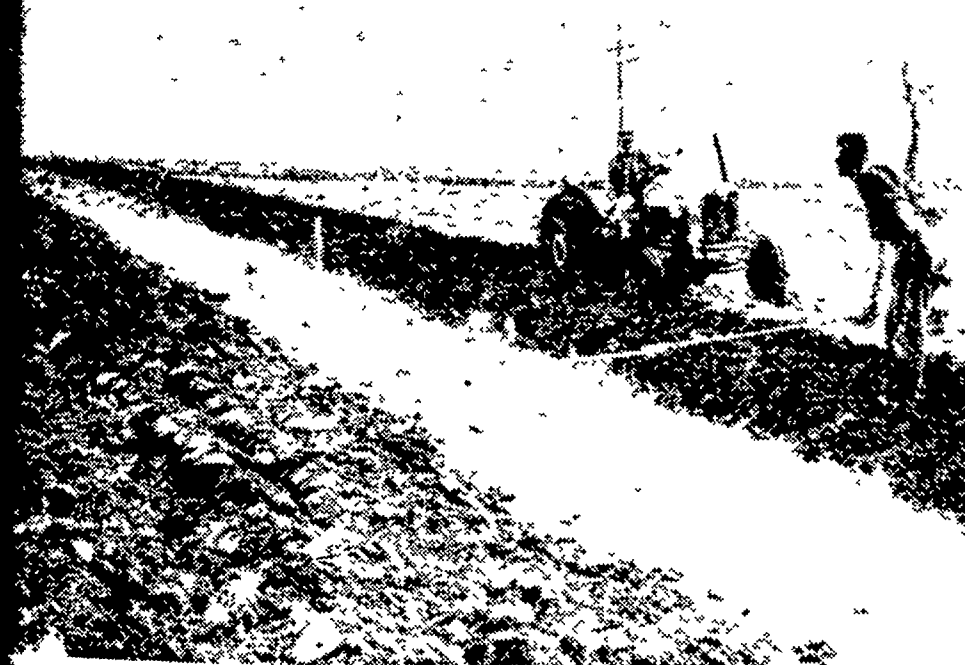
He reduced the cost of installing terraces by plowing them in with his tractor and two-bottom moldboard plow, using the "island" method. This is a standard method in conservation terrace construction.

(Continued on Page 13)

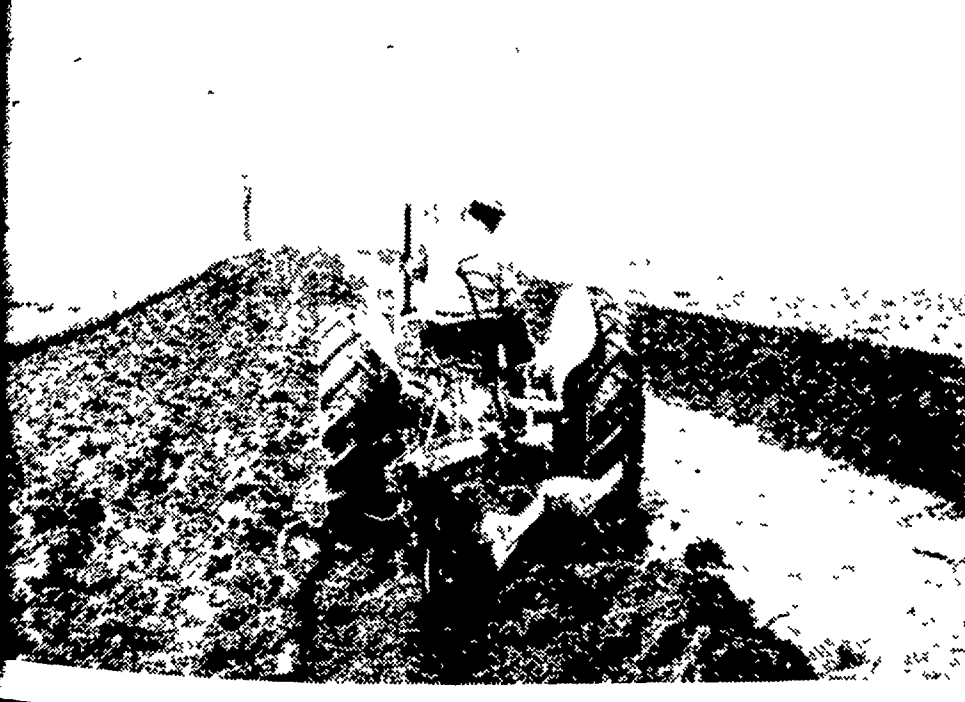
FIVE - DAY WEATHER FORECAST

Saturday - Wednesday
U. S. Weather Bureau,
Lancaster Office

Temperatures will average 5 - 6 degrees above normal range of 43-63. Continued warm through Sunday, slightly cooler about Monday and Tuesday. Chance of showers beginning about Sunday and continuing through Tuesday.



CONSERVATION AID ABNER HOUSEKNECHT, at right in the upper photo, checks width as Donald Rowe finishes the first rounds of terrace construction. The undisturbed below, with Paul Rowe taking the wheel and starting the construction phase of "plowing-in" the six rounds of loose dirt and piling it on top the required 1.2 feet depth. The three parallel terraces, so constructed by a highly unique combination of circumstances, have a fall of four-tenths of one 100 linear feet



—LFPHOTOS