

At Lancaster Yards Receipts Climb to 4200

James E. O'Hara,
In Charge, Market News Branch
March 13, 1959

Cattle receipts will total about 4483 compared with 4326 head last week. Quality was the best in several weeks with several loads grading average-choice and better. Trading was moderately active for all classes. Compared with last week's close slaughter steers were 25-50 higher with most of the advance on choice and prime grades. Cows sold fully 25 higher. Bulls fully steady. Stockers and feeders steady to 50 higher.

Several loads and lots choice and prime 1098-1340 lb. slaughter steers made 30-50-31.50. Bulk of choice slaughter steers made 28.00-30.00 including a load high-choice weighing 1496 lb. at 30.00. Good to low-choice steers sold for 26.00-28.25.

Few lots good and choice heifers made 25.50-27.50. Utility and coml. bulls brought 22.75-25.50, and good grade fed bulls made 25.75-27.00. Cutter and utility cows brought 16.75-20.75, with coml. cows up to 21.50,

Canners and low-cutters sold from 15.00-16.75.

Good and choice 800-1050 lb. feeder steers ranged from 27.00-28.75, and a load average to high-choice weighing 975 lb. managed 29.10. Medium and good feeders made 25.00-27.25, good and choice 550-800 lb. stock steers ranged from 28.00-30.50, a few lots choice 650-711 lb. at 31.25-31.50. Medium and good stockers made 26.00-28.25. Good grade stock calves sold at 29.00-34.00.

Calf division was active. Receipts, 775 compared with 844 head last week. Vealers sold at steady rate. Good and choice vealers made 28-36, choice and prime vealers made 36-39, standard and low-good sold for 23-27, and utility sold down to 18.

Trading was moderately active on about 1600 head of hogs this week. Barrows and gilts were 25-50 higher and sows held about steady. U.S. 1-3 grade 190-225 lb. barrows and gilts brought 17-17.15 a few lots No. 3 early down to 16.50.

Hogs more uniform for weight and grade including (Turn to page 3)

Chicago Cattle Killer Steers 70% Of Run

CHICAGO, MAR. 13—
WEEKLY REVIEW—

CATTLE—Receipts slightly larger than last week, largest in six weeks, and 15 per cent greater than the same week last year. Receipts Monday among the smallest of the year for that day, while Wed. largest for the day since Jan.

Smaller percentage slaughter steers and cows and increased percentage heifers. About 70 per cent slaughter steers compared 75 per cent last week, around 20 per cent last week.

Percentage prime steers again small and about the same as the 5.8 prime last week; however, percentage high-choice steers increased slightly compared with the 50 per cent choice last week, average weight of slaughter steers expected to be about the same as last week's average of 1170 lbs., but about 50 lbs heavier than the same week a year ago.

Bulk of the heifer supply good to average-choice. Receipts included 106 loads of western cattle, principally fed steers, compared 65 loads last week. Another series of higher markets, except for some weakness late on steers grading good and below, left prices for slaughter steers strong to fully \$1 higher for the week and \$2 - 3 higher that three weeks ago. Most advance this week on choice and prime over 1300 lb. steers. Heifers again trailed the advance in steer prices but sold strong to 50 higher. Cows advanced 50 - \$1 and bulls sold mostly \$1 higher. Vealers strong to fully \$1 higher. Stockers and feeders fully 50 higher. Five loads

New Holland Receipts Total 1,370

Receipts for Thursday's New Holland cattle and calf auction totaled 1,370 head, with 1081 cattle and 289 calves. Auction officials termed the run "gratifying" considering the weather. All high choice and prime cattle found brisk outlet, steady with last week. All others on draggy side as buyers tried to take them on cheap side.

Bulls were active, 25 - 75 higher. Cows very active, 25-50 higher. Calf market dull on all kinds, some \$1.50 - 3 lower.

Prime butcher steers — \$29.50-32.60; Choice—28.50, 29.50; Good—27-28, and plain to medium—24.50-27.

Choice heifers—\$26.50 - 27.86; Good—25.50-26.50;

mostly prime 1135 - 1350 lb. slaughter steers \$33 - 33.50, latter price highest since last June. However, general-steer market 1050 - 1350 lb. steers \$32.25 - 32.75, bulk choice and prime steers all weights \$28 - 32, mostly \$28.50 up late when numerous loads mixed-choice and prime brought \$31 - 31.75. Several loads low-choice 1025 - 1050 lb. steers, \$28.50.

Most loads of choice steers late at \$28.50 carried a good grade end, numerous loads mixed-good and low-choice steers \$27.50 - 28.25, bulk good grades \$26-27.25. Standard steers \$23.50-25.75, (Turn to page 13)

Plain to med.—19.50
Good bulls—\$28.50
Bologna bulls—\$23.50
and plain to med.—
Good butcher cows
22.10; Med.—18.50
Canners and cutters
and shells—13-15

Stockers and feeders
\$26.50-28.10. Stock
ves—28-31.50.

Choice to prime
35-38; Good—30-35,
25-30, and thin \$19

Receipts at the W
dairy sale included
of cows, six stock
three heifers on a
cow market.

Fresh holstein cow
selling for \$340-470,
seys, \$250-305, and
and other breeds \$

Stock bulls were
250; stock heifers,
The March 2nd
mule sale had receipt
head with the draft
and mule markets
riding horses strong
per head higher. R
ses on camp order w
30 higher.

Draft horse teams
\$356-460, singles w
220. Mules were \$330
teams, singles were
190.

Pony geldings were
140. Riding horses \$

Drivers, \$135-300
Heavy killers were
182.50, thin kinds
with a strong m
market.

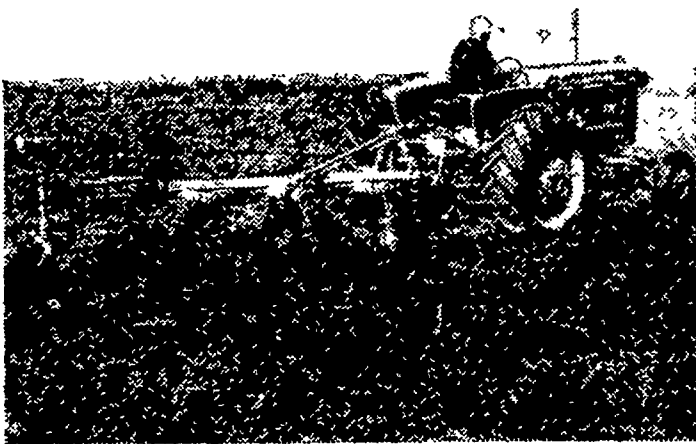
AS A RESULT OF A DESIRE OF BOTH
FARMERS and BUYERS
EVERY WEDNESDAY

THERE WILL BE A FULL LINE OF
SLAUGHTER CATTLE
OFFERED FOR SALE

AT THE
LANCASTER UNION STOCK YARDS

Your cooperation will be appreciated.
For further information consult your commission firm.
STOCKERS & FEEDERS on hand daily.

HOW MANY ACRES...



... did this Allis-Chalmers D-17 plow with 20 gallons of fuel in this tough dry field?

① 12.1 acres ② 9.1 acres ③ 10.5 acres

In tough fall plowing, three new owner-driven tractors competed in a practical plowing test. Each tractor pulled four 14-inch plow bottoms at the same average speed and depth . . . until its 20 gallons of fuel was gone.

Call or stop in to see us for the correct answer. We can tell you what tractors plowed in this test and the comparative results. Let us show you why Allis-Chalmers D-Series Tractors with TRACTION BOOSTER system and Power Director plow more land per gallon.

TRACTION BOOSTER is Allis-Chalmers trademark.

LISTEN . . . The National Farm and Home Hour, NBC, Saturdays!



ALLIS-CHALMERS
SALES AND SERVICE

N. G. Myers & Son
Rheems, Pa.

L. H. Brubaker
Lititz, Pa.

L. H. Brubaker
Lancaster, Pa.

Nissley Farm Service
Washington Boro, Pa.

Mann & Grumelli Farm Serv.
Quarryville, Pa.

R. S. Weaver
Stevens, Pa.

Snavelys Farm Service
New Holland, Pa.

DEAD ANIMALS REMOVED PROMPTLY

Will Pay Full Value
For Dead Animals
Dealers in Bones, Tallow
and Hides

FRY'S RENDERING WORKS

Prop., John Fry
2114 Hollinger RD.
Lancaster
Ph. EX 2-4815 H No Answer
Phone EX 7-0472



IT PAYS EXTRA
DIVIDENDS
START ME OFF
RIGHT!

Farm Bureau
PIG STARTER PELLETS

Quick Start — Extra Profit

Rapid gains at the start means weaning your pigs earlier, reaching market weight sooner, and more profit for you per pound of pork.

Farm Bureau Pig Starter Pellets
High in Necessary Nutrients

Start your baby pigs on Farm Bureau Pig Starter Pellets, and be sure they're getting all the proteins, minerals, vitamins and antibiotics they need for rapid gains and early marketing. Protein-rich Starter Pellets furnish the nutrients that are necessary for building fat-free tissue and forming an efficient digestive system

MARKET MORE HOGS
IN LESS TIME!



SETTING THE PACE
IN SERVICE TO

AGRICULTURE 1934-1959

OWNED and CONTROLLED
by Lancaster County FARMERS

Chicks Galore! Come in and get you

100 W. Vantress; 100 Barred Cross,
400 Nedlar Hampshires

Onion sets are in now; potatoes are soon com

Don't forget Altman's Milk Replacer is as good as best, and better than the rest! Garden tools and fertilizer !!

If you have never tried Altman's Feed, you not know what you are missing !!

Why not try some Dixie Litter for your chick
Staz Dry for your laying flocks!

ALTMAN'S CASH FEED STORE

947 Harrisburg Pike Ph. Lanc. EX 4
Willis H. Weaver, Mgr.

MORE PORK
AT LESS COST
FOR
BIG PROFITS
WITH
Farm Bureau
SWINE FEEDING
PROGRAM

IT'S NEW
IT'S IMPROVED
IT'S COMPLETE

- Pig Pre-Starter Pellets
- Pig Starter Pellets
- 16% Pig Development
- 13% Pork Market
- 38% Sow & Pig Supplement

Fortified with Antibiotics
Available with Hygromycin