

## Week Horn & Co. Host Open House

(page 4)  
 who are  
 communism.  
 of it is  
 such things as  
 distribution  
 needy people in  
 preservation,  
 soil conser-  
 salaries of some  
 employees.  
 prices had gone up  
 going down by  
 much as the cost  
 farmers buy since

D. E. Horn & Co., Lincoln and West Sts., York, today (Saturday) are observing the fortieth anniversary of their business with an open house at the recently completed 1952 U. S. consumers would be paying at least \$10 billion a year more for their food and clothing. It is this difference of opinion that makes the Washington farm battle one of the liveliest in many years.

"push-button" feed mill in York.  
 Horn & Co. was started in 1919 with a horse and-wagon delivery unit and has grown to use of bulk delivery trucks and the completely automatic, push button mill, in addition to another mill and a 60,000 bushel elevator.

Patronize Lancaster Farming Advertisers.

## SCD in Lititz Run Area

The Lancaster County Soil Conservation District enrolled nine more farms, totaling 832 acres in approved conservation programs during the March directors' meeting this week.

Two of the new district members are from the Lititz Run watershed area, an acute problem area for alternate flooding and lowering water tables. The District

has joined with Lititz civic groups in encouraging adoption of conservation practices on watershed farms.

Only three per cent of farms in the Lititz Run Watershed are credited with not requiring conservation farming as an immediate measure, while 25 per cent of the farm land is listed as having serious erosion conditions.

Farmers signing agreements with the district this month are: Clarence R. Nisley, Lititz RD 2, 158 acres; Abram Longenecker, Lititz RD 2, 94 acres; Robert E. and Walter M. Arnsdorf, Peach Bottom RD 1, 81 acres; Jacob R. Glick, Lancaster R. D. 4, 17 acres;

Stephen K. Yoder, Quarryville RD 3, 97 acres; Norman N. Eberly, New Holland RD 1; Harvey M. Hostetter, Lancaster RD 2, 68 acres; Lester G. Greiner, of Manheim RD 4, 65 acres; Homer G. Hess, Marietta RD 1, 187 acres

Patronize Lancaster Farming Advertisers.

Stoves Water Heaters  
 Heaters Gas Clothes Dryers  
 MANY OTHER GAS APPLIANCES  
 Low to Sell — Our Service The Best  
**WARD BOTTLE GAS**  
 STATE STREET EPHRATA, PENNA.



# in 1959 it's HONEGGER LAYERS

Here's what you can expect!

**HIGHER INCOME.** In the 1957 - 1958 Florida Random Sample Test, Honegger Layers won with an income of \$4.97 over feed and chick costs.

**HIGHER LIVABILITY.** In the 1957 - 1958 Central New York Random Sample Test, Honegger Layers had 92.2% livability from 7 to 500 days.

**HIGHER EGG QUALITY.** In the 1957 - 1958 Texas Random Sample Test, Honegger Layers averaged 97.1% Grade A or better for all eggs laid.

**LARGER EGGS.** The same birds that placed first in the '57 - '58 Florida Random Sample Test averaged over 80% large and extra large eggs.

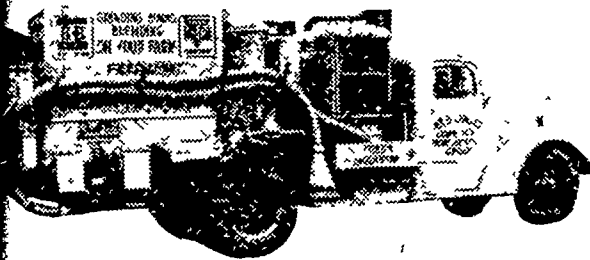
**GREATER FEED EFFICIENCY.** Honegger Layer entries in all recently completed Random Sample Tests, averaged only 4.6 pounds of feed per dozen eggs.

**HIGHER PRODUCTION.** On the farm tests show that Honegger Layers on a hen-housed basis average 255-270 eggs under good management.



**WINDLE'S HATCHERY**  
 COCHRANVILLE  
 Phone Atglen LY 3-5941

elling-Grinding-Mixing  
 Service Now Available




plete Poultry - Dairy & Hog Feeds

le On Your Farm With Home-Grown Grains

ill or See Your MA-CO and BULL BRAND Dealer Today

S. O. TRUPE B. G. MELLINGER & SON  
 1st Earl, R. D. 1 Willow Street, R. D. 1

GRAYBILL & SON IRA B. LANDIS  
 Bareville 779 Valley Rd., Lancaster



To market FASTER  
**ON 65 LBS. LESS**  
**FEED PER PIG\***

### Red Rose Research Center SWINE FEEDING SUMMARY

	Av. Wt. 28 days	Av. Wt. 56 days	Av. Wt. 112 days	Days to reach 200 lbs. av.	Feed Consumed	Av. Daily Gain
'57 Fall	14.8 lbs.	40	111	165 days	585 lbs.	1.10 lbs.
'58 Spring	15.8 lbs.	47	131	145 days	520 lbs.	1.34 lbs.

**RED ROSE PIG STARTER PELLETS** supply pigs with "early nutrition," help earlier weaning, condition for dry feeds.

**RED ROSE PIG GROWER PELLETS** is a complete ration with zinc, vitamins and antibiotics added.

**RED ROSE PORKMAKER** is a balanced ration containing all essentials for producing profitable pork.

\*with the **RED ROSE "Thrifty Pig" Program**



AMMON E. SHELLY  
 R D 2, Lititz, Pa.

A. S. GROFF  
 21 S. Queen, Lancaster, Pa.

CHAS E. SAUDER & SONS  
 R D 2, East Earl, Pa.

MUSSER'S  
 The Buck, R 1, Quarryville

REICH POULTRY FARM  
 R D 1, Marietta, Pa.

J. C. WALKER & CO.  
 Gap, Pa.

WARREN SICKMAN  
 R. D 1, Pequea, Pa.

E. MUSSER HEISEY  
 R. D. 2, Mount Joy, Pa.

**IMPROVED Antibiotic Action**  
 Truly Effective C.R.D. Control at Real Economy



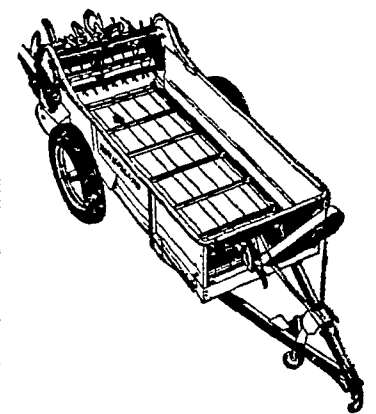
ROCKLAND

**"Para-Strep" Dust**

Just as effective as the standard base grains of dihydrostreptomycin (strep-dust) but costs a lot less. "PARA-STREP" uses antibiotic potentiation, one bottle per 1,000 birds.  
 \*Pat. Pend.

Ask your dealer for

**ROCKLAND CHEMICAL COMPANY**  
 West Caldwell, New Jersey



Get All These Features In Your New Spreader!

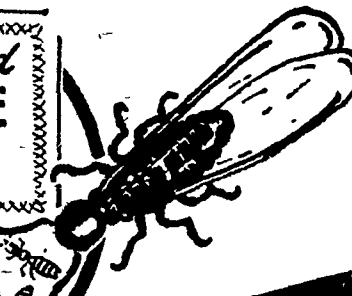
These Features Give You The Most for Your Money. You Get Them All With New Holland's 221—Not Just A Few!

1. Full Protection Against Overload
2. Convenient Rope Control
3. Permanently Shielded P.T.O.
4. Specially-Treated and Painted Wood Bed
5. Super-Speed Cleanout
6. No Arch Over Beaters
7. Adjustable Screw Jack
8. Steel Frame-Work for Durability

**NEW HOLLAND**  
 "First in Grassland Farming"

**L. H. BRUBAKER**

350 Strasburg Pike, Lanc.  
 Lititz R. D. 3  
 Ph. Lanc. EX 3-7607  
 Strasburg OV 7-6002  
 Lititz MA 6-7766



Guaranteed **TERMITE CONTROL**

**THE BIG DIFFERENCE** IN **TERMITE CONTROL**

ABLE INSPECTION AND CONSULTATION—WITHOUT COST OR OBLIGATION.  
 DORSED BY PROMINENT ARCHITECTS, BUILDERS AND ALTY INSTITUTIONS.  
 ORK PERFORMED BY SPECIALLY TRAINED OPERATORS COVERED BY PUBLIC LIABILITY INSURANCE.  
 PENDABLE PROTECTION BACKED BY A RESPONSIBLE ORGANIZATION, ESTABLISHED FOR OVER A QUARTER OF A NTURY.  
 MLETE PERFORMANCE UNCONDITIONALLY GUARANTEED 5 YEARS, OR LONGER, IF DESIRED.

**C. Ehrlich Co.**  
 EAST CHESTNUT STREET, LANCASTER  
 PHONE EX 7-3721