

Extension Association

Directors Elected Thursday

More than 250 members of the Lancaster County Extension Assn. met in their annual dinner-meeting Thursday evening at Mt. Joy, with election of directors heading the program.

Nominees for the five directorships were:

Northwest dist.; Lester Charles, Landisville; Frank Eshelman, Manheim RD 1; Henry H. Hackman, Manheim RD 2, and Clayton Sangrey, Lutz, RD 2.

Southwest dist.; Mrs. LeRoy Andrews, Lancaster RD 7; Mrs. Mark S. Hess, Lancaster RD 6; Mrs. Kenneth Musser, Columbia RD 2, and Mrs. Edgar Porter, Washington Boro RD 1.

Northeast dist.; Willis Z. Esbenshade, 1631 Esbenshade Rd., Lancaster; Bard E. Kreider, Lutz, RD 4; Arthur Reist, 1050 Eden Rd., Lancaster, and George A. Rutt, Stevens RD 1.

Southeast dist.; Mrs. Donald S. Eby, Gordonville RD 1; Mrs. Robert Hess, Strasburg RD 1; Mrs. Richard Landis,

The best lamp shades for desk or study table and general room lighting are light-colored ones, reports Miss Erma Langford, Penn State extension home furnishings specialist. These shades reflect the most light and allow some light to pass through their sides.

Order Your AEROPRILLS®

Ammonium Nitrate



For Top Dressing Pastures and Small Grain Fields or Plowing Down.

P. L. ROHRER & BRO., INC.

SMOKETOWN, PA.
Ph. Lanc. EX 2-2659

REIST'S

Sure Crop Seeds

ALFALFAS

Vernal
DePuit
Ranger
Buffalo
Grimm

CLOVERS

Pennscott
Kenland
Penna. grown
Mammoth

HYBRID CORN
DEVELOPED BY
PENN STATE EX
STATION

Get our prices
and save money

Reist Seed Company

MOUNT JOY, PA.
Phone OL 3-3921

Seeds

BARBECUE AT POULTRY CENTER

Another of the regular Lancaster County Poultry Association barbecues will be operated today at the Poultry Center on West Roseville Rd., Lancaster.

Barbecued chicken to take out will be available hot off the charcoal, from 2-5 p.m. on a first come, first served basis.

A half chicken is \$1, three halves, \$2.75, and six halves, \$5.00.

Horseshoe Rd., Lancaster, and Mrs. Melvin R. Stoltzfus Ronks RD 1.

Southern dist.; Robert McSparran, Peach Bottom; Elam Mull, Quarryville RD 1, and Richard Maule, Q-ville RD 2.

Sangrey and Maule were elected, and Mrs. Mark Hess Esbenshade, and Mrs. Robert Hess were re-elected.

Officers and worker reports were also heard.

Consignment Sale

—OF—

40 Regist. & Grade Holstein Cattle

Bangs Certified, T. B. Accredited, Calf-Hood Vaccinated

MONDAY, FEB. 23, '59 12:30 O'CLOCK

LOCATION—At The Keystone Holstein Sale Barn, on Route 230 just east of Mount Joy, Pa.

36 Head Cows and Heifers

most are fresh or close. Including a lot of Wisconsin and Canadian cows, a few-up state cows. Will have a lot of nice cows. Some top Registered cows

MOUNT JOY SALES COMPANY

MOUNT JOY, PA. P. O. BOX 142

Harvey Rettew, Manager
R. D. 2, Manheim, Pa.

P. B. GUERNSEY SALE

At The Association's Sales Pavilion, 6 Miles East of Lancaster Pa on Route 30.

THURSDAY, FEBRUARY 19, 1959 — 12:30 NOON

70 Head — 3 Bulls - 45 Cows - 14 Bred & 8 Open Heifers
Majority vaccinated and due within thirty days of Sale.
Bangs and T. B. Certified!

J Ray Keiser, Milton, Pa., is selling his small herd of twenty head. Primarily Curtiss Candy and Coldspring's Breeding.

COLDSPRING'S L. R. LEADER by McDONALD FARMS LE RELIABLE, out of COLDSPRING'S B R FORENCE 12238-532-Sr2-365; 14598-723-5-365, is sire of ten open and bred heifers, and Service Sire to most of the cows consigned by J Ray Keiser His herd has been on HIR, showing good records on the consignments, and their dams.

Added consignments include. Gwynnlan Farms, Gwynedd Valley, Pa. consigns five good young cows, fresh or close springers Charles R. Botts, Jr., Millersburg, Pa., 11 head DHIA records, most of them by SPABC Sires. John H Vogt, Reading, Pa., eleven outstanding heifers of exceptionally good breeding, due right away. Others, too many to mention. DON'T MISS THIS SALE!

Sale Managed by: Catalogs at sale

PENNA. GUERNSEY BREEDERS' ASS'N.

P O Box 491 Telephone CE 4-4062 HARRISBURG PA

LARGE SPRING

Livestock Sale

— OF —

T. B. tested & accredited dairy cattle & hogs

FRIDAY, FEB. 20, 1959

AT 12:00

On the road west of Annville, Route 422 to 322, three miles south of Annville, and one mile north of 322.—Look for Sale signs.

50 Head Extra Fine Holstein Dairy Cows



20 fresh by day of sale. 10 fall cows, balance close springers. This has been an outstanding herd, and must be seen to be appreciated. Some of these cattle have produced over 16,000 lb. of milk with 600 lb. butter fat per year. 5 head of registered and grade bulls, from 700 to 1200 lb. 5 head of extra nice holstein heifers, all bred.

70 HEAD OF HOGS AND SHOATS

ranging from 30 to 75 lb.

One four-can Milk Cooler. 2-un't Marlow Milker. like new.

Hess & Dupes, Aucts
Martin & Bashore, Clerks

Blaine G. Hoffer

Refreshments will be served by the Palmyra Church of the Brethren.

BUY FROM RELIABLE MANUFACTURERS AND DEALERS

Buy appliances only from reliable manufacturers and dealers who stand behind their merchandise, advises Helen E. Bell, Penn State home management specialist. A reliable manufacturer of-

fers a warranty to assure his product is free from material and workmanship defects. The warranty is only in effect for one year from the date of purchase. If a defect appears in the appliance within one year of purchase, he will repair or replace the necessary parts.

193rd GARDEN SPOT SALE—THURSDAY, FEBRUARY 19, 1959

LANCASTER, PENNA.

Sale held on the J M Brubaker farm located in West Street Village, 4 miles South of Lancaster, Pa., just off Routes 72 and 222.

75 REGISTERED HOLSTEINS

(Nearly all just fresh or close springers - Service Bulls Bred & Open Heifers)

All T B Accredited, Bang's Certified, Nearly all Bred & Open Heifers. Vaccinated. All tests up to date.

MONTH AFTER MONTH GARDEN SPOT HAS PROVEN ITSELF A RELIABLE PLACE TO BUY YOUR PLACEMENTS AND FOUNDATION ANIMALS!

HERE ARE A FEW FOR YOUR CONSIDERATION:

- 501-lb. dtr of Smthholm Sonniwilk Sovereign out of dam with 141000 M in 10 lactations Maternal sister 100,000 and V G. Watch for this one.
- Yrlg son of Pabst Walker Rebright (EX) out of dam with many records up to 626 and 604-lbs fat on 2nd dam also VG with over 118,000 and still going
- 2 dauts of Royal Sussex Progressor with 1st records of 11,032 and 10,627 M both at 2 yrs. 1 mo is out of 640-lb 3 yr old Both will be carrying calf sale time.
- Dtr. of Hillmac Sovereign sells out of dam with recs. of over 500-lbs fat 2nd dam with 665-lbs. fat on 2nd dam to Langdonhurst Ormsby Burke Lad

There will be many more of equal quality.

Make it a point to attend this Garden Spot Sale! We will be glad you did!

Sale starts 12:00 Noon Lunch available Catalogs R. AUSTIN BACKUS, INC. Sale Mgrs. & Auctioneers, Mexico, N. Y.

EARL GROFF, Local Rep., Strasburg, Pa

PUBLIC SALE

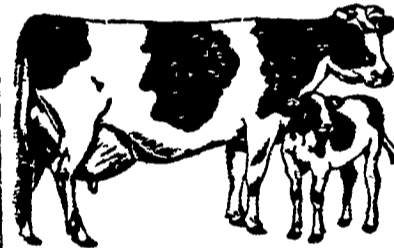
—OF—

Livestock - Farm Machinery - Household Goods

Saturday, Feb. 28, 1959

AT 11.00 A. M. Sharp

Location - Lanc. Co. on the Manheim and Mount Joy Road, 1 1/4 mile east of Mount Joy and 6 miles west of Manheim, Pa.



20 Registered Holstein Cows

Bangs Certified, T. B. Accredited, some are fresh and some were fresh in the fall and bred for fall. Including daughters of Lauxmont Admiral Lucifer, one daughter WeeJoe Sanar and others by proven sires. This is a good herd of cows, have good size with nice udders. Make good foundation animals or good additions to herds.

DODGE 1/2-ton PICK-UP TRUCK

FARM MACHINERY: FARMALL 300 TRACTOR, used season, like new; FARMALL H. TRACTOR, cultivator double tobacco hoers, FARMALL A TRACTOR, cultivator and one man tobacco hoers, chisel and manure loader the A Tractor, 7 ft. grass mower for the H Tractor, heat houser, 14 inch plow for the A Tractor, OLIVER TRACTOR, with mounted tobacco and corn planter, Little Genius 14 in. plows, 2 New Idea manure spreader 4 wheels on rubber; two 4-ton rubber tire wagons with brakes, two 4-horse wagons, one 2-horse wagon, with and hay flats; bobsleigh, 14 disc Ontario drill, like new bar New Idea side rake on rubber, bale elevator, H C T baler, 32 disc harrow, tractor harrow, 3-section spike harrow, spike harrow, 10-ft. cultipacker, land roller, Gehl hammermill with 15 horse elect. motor, Simplex garden tractor with cutter bar, like new; air compressor power take off pump, hay tetter, 3 tobacco ladders, 20 long; 2 Minnich tobacco presses, 2 lath pullers, 8 tobacco shears & spears, like new; grass seeder for tractor, wheelbarrow, grass seeder, 2 manure sleds, 2 shovel harrow potato plow, 2 scorers, walking plow, single row corn planter, scalding trough; 32 ft. ext. ladder, single ladder tractor tire chains, for A tractor; Hillside hitch for H tractor, 4 ft. fan for tobacco shed, platform scales, 1000 cap., 5 fence chargers, 1 weed burner, posts, 3 rolls of fence, 2 grindstones, 50 ft. endless belt, 2 wooden wheelbarrows, 1 rubber tire wheelbarrow 2 bag wagons, 2 cart, 3 ensilage carts, 27 in. circular saw, hay cart hooks, ropes & pulleys, metal chicken feeders & nest horse trees & harrow eveners, wagon tongues, 6th chain spreader, 6 set of harness, some with new traces, 7 pair forks, shovels, rakes, hoes, digging iron, feed scoops, log chains, vise lawn mower, iron kettle and three full set of house shutters, everything in good condition 1000 bus. ear corn.

DAIRY EQUIPMENT—3 units New Perfection milk used less than 1 yr.; pipe for 20 cows, 6-in. a line milk cooler, hot water heater, twin wash tubs, can buckets, strainers, milk trough; 18' milk cans, 12 ft. trough.

HOUSEHOLD GOODS—2 Oak bedroom suits, 10-pc. walnut dining room suite, 100-pc. dinner set, silver knifes & forks, elect. mixer, chime clock, davenport, 2 pine clothes trees, old cupboard, wardrobe, utility cabinet, large and throw rugs, small tables, highchair, rocking chairs, 3 radios, shotgun, dishes, pots, pans, etc.

Sale to start at 11:00 A. M.
Refreshments served by Florin Church of The Brethren. Cattle sale managed by Harvey Rettew, Manheim Rd.

PARIS B. GRUBER
CLARENCE B. GRUBER

Dupes & Gerberich, Aucts.
Zeller & Gainer, Clerks.