

# Lancaster Farming

NO. 13

Lancaster, Pa., Saturday, February 7, 1959

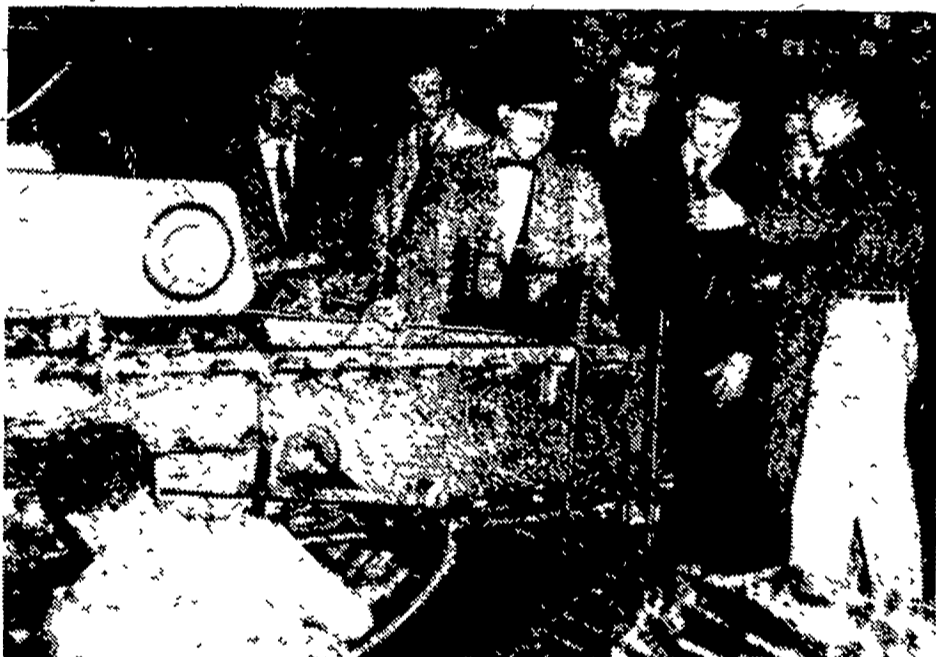
\$2 Per Year

## National FFA Officers Here on Annual Tour



NATIONAL FFA OFFICERS and their party are shown at top left on a visit Tuesday to the Christ King farm, Lancaster. From left: Art Hoffer, Manheim RD 3, Pa. FFA pres; Jim C. Fink, Penna. advisor of voc-ag education; Tom Stine, Ozark, Mo., nat'l v-p; W. Lee Gray, Wash., D. C., nat'l exec-sec; Adin Hester, Aurora, Oregon,

nat'l pres; Norman Brown, Temperance, Mich., nat'l sec.; John Farrey, nat'l FFA public relations director; Bryan Hafen, Mesquite, Nevada, nat'l v-p; Dick Van Auken, Monroe, N. J., nat'l v-p; Lee Todd, Bells, Tenn., nat'l v-p, and County Agent Max Smith. At top right, Hester meets George C. Delp, president of New Holland Machine Co., sponsors of the FFA group's local visit.



AT LEFT, Hester, Gray, Brown and Stine are briefed on production records at NH by Art King as they inspect the assembly line. At right,

Van Auken, Fink, Todd, Hoffer and Hafen witness the final assembly of a new hay baler as John Trautman explains the operation—LF PHOTOS

### State Swing Opens in County

Appreciation for the scenic beauty of Lancaster County and great interest in the area's intensive agriculture were expressed by a group of six national Future Farmers of America officers visiting here Tuesday on the annual FFA State Tour.

The local tour was sponsored by New Holland Machine Co., with a visit to the Christ King farm, highlighting the office.

### 7-DAY WEATHER FORECAST

Saturday - Wednesday  
S Weather Bureau,  
Lancaster Office  
temperatures will average  
3 - 5 degrees above  
normal. Rather cold thru  
Friday. Warmer Sunday  
Monday. Colder Tuesday.  
Precipitation will average  
1/4 - 1/2 inch, occurring  
Friday and Tuesday.

### LABOR SAVING --- The Easy Way

One of the best labor saving devices on the modern dairy farm is a high-producing cow, according to Leo R. Fryman of the Univ. of Illinois. He points out that 20 cows averaging 10,000 lbs of milk and 400 lbs of fat annually will net as much as 60 cows averaging 7,800 lbs of milk and 300 lbs of fat.

And Fryman adds, the higher producing herd can bring the same net as the lower-producing herd with two-thirds less labor.

### SPABC Sets Annual Meetings

The 1959 schedule of stockholders meetings for South-eastern Penna. Artificial Breeding Co-op will open at 1:00 p. m. Monday with the Fulton County District meeting at McConnellsburg Fire Hall, according to SPABC President Earl L. Groff.

The schedule for next week then will include Franklin and Adams counties on Tuesday; Cumberland dist. on Wednesday; York county on Thursday at 1 p. m. at the York caterpillar works, and Dauphin-Northumberland and Lebanon-Berks counties districts on Friday, the former at the Halifax American Legion at 1 p. m., the latter at Lebanon Farm Bureau at 7 p. m.

### Pa. Price Index Shows Gain

Harrisburg — The Pennsylvania farm prices received index in mid-January was unchanged from the same date a year earlier but was up three points from mid-December, the State Department of Agriculture said today.

The index stood at 220 on January 15. The 1910-14 base equals 100.

Prices for fruits, vegetables, corn, meat animals and poultry were the greatest factors in the rise, according to a Pennsylvania Crop Reporting Service tabulation. A large gain in the fruit index was due primarily to higher prices being paid farmers for apples and a seasonal revision of prices received for other fruit.

Higher prices being received for corn, barley and soybeans were more than enough to offset lower prices for hay. Steer and other cattle prices showed a gain, but hog prices declined to an average of 18 cents a pound lowest since November 1957, and eight per cent below a year ago.

On the other hand, calves selling at \$29.70 a hundred-weight equaled a high set in mid-October 1952 and milk cows at \$290 a head equaled a peak established September 1, 1952.

The poultry and egg index rose six points or four per cent from mid-December, the increase due to higher prices for broilers and eggs.

The national index of prices received paralleled Pennsylvania's.

Lee Todd, national vice-president (Turn to page 12)