

Farm Show Results (contd.)

(Continued from page 10)

Staymans, Consumer Package—4, Masonic Homes, York, Consumer Package—4, Brubaker.

McIntosh, Consumer Package—4, Masonic Homes.

Jonathan, Consumer Package—4, Masonic Homes.

Delicious—5, Masonic Homes Farms.

Red Rome, Box Packed—5, Brubaker.

Jonathan, Box Packed—5, Brubaker.

Rome, Box Packed—5, Brubaker.

Red Delicious, Bushel Basket—5, Brubaker.

Delicious, Bushel Basket—2, Masonic Homes Farms; 4, Masonic Homes Farms; 5, Brubaker.

Jonathan Bushel Basket—2, Masonic Homes Farms, 3, M Grimes, Ephrata.

Red Stayman, Bushel Basket—4, Brubaker.

Red Rome, Bushel Basket—3, Masonic Homes Farms.

Red McIntosh, Bushel Basket—3, Masonic Homes.

Stayman, Bushel Basket—2, Masonic Homes Farms; 3, S R. Snyder; 4, Jacob Houser, Lampeter; 5, Brubaker.

York, Bushel Basket—5, Brubaker.

Golden Delicious, Bushel Basket—3, A. Stauffer, Den-

ver R1.

Rome, Bushel Basket—3, Masonic Homes Farms; 5, Brubaker.

Red York, Bushel Basket—5, Brubaker.

4-H LAMBS

Reserve champion pen of three—Nancy Gible, Elizabethtown, R3, Southdowns.

Hampshires — 3, Thomas Hess, Bareville R1; 2, Mary Ann Hess, Bareville; 3, Robert Hoover, Denver R2.

Shropshires — 3, Gerald Meck, Reinholds R1; 5, Donald Wiggins, Millersville R1; 7, Harold Sangrey, Millersville.

Southdowns — 2, Nancy Gible; 3, J. David Lapp, Bareville R1.

Cheviots—5, David Witmer Neffsville.

★ Farm Show

(From page 1)

In Friday's competition for the Grand Champion Fat Steer of 1959 Farm Show, Connie Qusenberry, York Co., topped the field to take honors with her Champion Open Hereford. The 16-year-old Stewartstown girl also exhibited the Open Champion Shorthorn steer.



BEST HOUSEKEEPERS of the entire 1950 Farm Show appeared late Friday "Herdswomen" Florence Mae Flory, left, of Manheim RD 3, and Marilyn Harnish, Ryville RD 2. The county duo teamed up in managing the 4-H Ayrshire Club's herd had been awarded Monday and Wednesday "day money" in the show's "Best Herds" test. Wednesday's honor was shared with Masonic Homes, E-town. The calf Florence holding placed second in her class, while Marilyn's was 4-H Grand Champion. In addition Marilyn won the 4-H Fitting Title and placed second in the showing contest, with Florence taking third. Yep, it's a woman's World. —LF PH

Ginsler had Reserve Champion with his Junior Champion. Don Herr; Gary Kreiner, of Elizabethtown RD 3, and Samuel Long, Manheim RD 4. Show judge Tom Merritt, Ohio State University, termed Lancaster County's array in this year's competition, "One of the best quality groupings one county has shown in a show I have judged." Owners of Trio beef were: Elsewhere in the show, it record

PINE WOOD SHAVINGS

For Poultry and Livestock Bedding

CALL EXpress 4-5412

CONVENIENT — SANITARY — SERVICEABLE

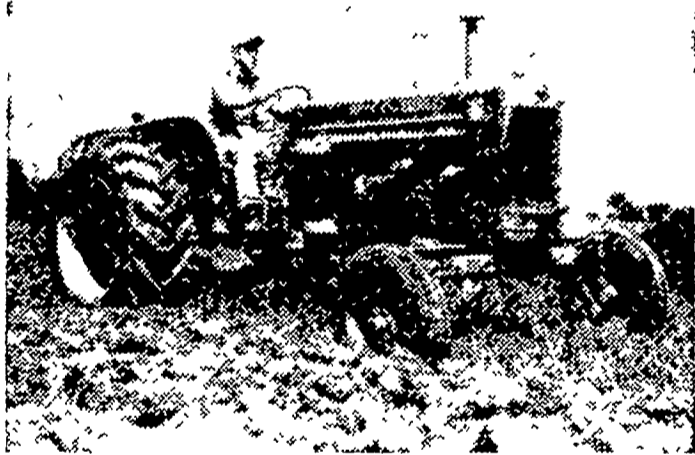
Deliveries Made Over Two Tons
Trailer Load Prices, Bagged or Bulk

HAROLD B. ZOOK

220 Lampeter Road

Lancaster, Pa.

MORE THAN 50 HP...



yet drives like a dream

It's the easiest-to-use big tractor you've ever seen. Low-Line, High-Crop design permits a low, safe, roomy platform. A single step and you're in the new center-ride seat that smooths out the ride... reduces fatigue.

Controls and instruments are grouped for simple, effortless operation. There is power steering if you prefer.

New Power Director provides unequalled control of power. You can quick-shift on-the-go (without clutching) to reduce travel 30 percent and increase pull power 42 percent. And, all the while, PTO operates continuously.

Ask to drive the new D-17 with 51 belt hp

ALLIS-CHALMERS 

Sales & Service

Snavelys Farm Service
New Holland, Pa.

N. G. Myers & Son
Rheems, Pa.

L. H. Brubaker
Lititz, Pa.

Mann & Grumelli Farm Serv.
Quarryville, Pa.

R. S. Weaver
Stevens, Pa.

L. H. Brubaker
Lancaster, Pa.

Nissley Farm Service
Washington Boro, Pa.

Good Management Makes Any EGG MASH BETTER!

(Including ours of course)

Ask your Miller and Bushong Serviceman about any problem relating to the management, production or health of your laying flock.

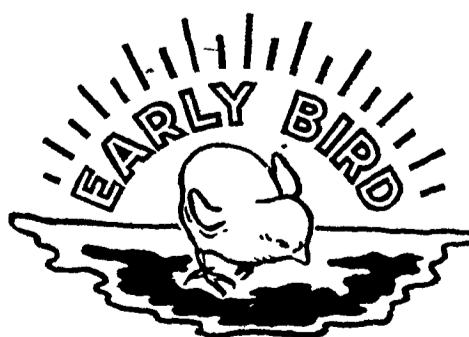
or call

Lancaster, EXpress 2-2145



For HIGH SUSTAINED Production of
QUALITY Eggs at LOW COST use...

EARLY BIRD FEEDS



Miller & Bushong, Inc

Rohrerstown, Pa.

Ph. Lancaster EX 2-2145

Manufacturers of Poultry and Live Stock Feed Since 1875.