

★ Farm Show

(From page 6)

sheep were accepted. There was also room for all 281 open class beef cattle and 126 baby beeves entered by 4-H Club members.

3,138 Birds Entered

The poultry show will have 3,138 birds including large and bantam fowl, turkeys, ducks, geese and capons. Entries for the egg, chick and poult shows do not close until just before the Show opens.

Amplifying the 1959 Farm Show theme, "Agriculture Everybody's Business," at least 35 Pennsylvania farm organizations will conduct educational meetings in Harrisburg during Farm Show Week. They will begin Monday, January 12, and continue through Thursday, January 15. For the first time in many years no farm organization meetings will be held on the final day of the Farm Show.

The Pennsylvania Cooperative Potato Growers have scheduled a "Navy Night" at

their annual banquet Thursday evening. Top brass from the nearby Naval Supply Depot at Mechanicsburg will join the spud growers to hear Commander Richard F. Dobbins, medical officer in USS Nautilus during her submerged trip across the top of the world.

Dr. Rudolph Froker, dean of the University of Wisconsin's College of Agriculture, will speak Tuesday evening at the annual banquet of the Pennsylvania Dairymen's Association.

The Pennsylvania Poultry Federation will have no banquet speaker. Instead, the poultrymen will enjoy professional entertainment and will make awards to friends of the industry. It will be held Wednesday evening.

A miniature duck pond, complete with old time grist mill, wooden waterwheel flume and tail race will be shown in the poultry section at the Farm Show. The stone mill, dam and pond are being built by Glenn Miller of Palmyra, Lebanon County

agriculture extension agent. The display will occupy about 50 square feet of space and is one of three exhibits designed to add interest and color to the poultry department.

Penn State poultry specialists will display two flocks of chickens. One will be a barnyard flock that might have been found on almost any Pennsylvania farm 60 years ago, the other a flock of today's highly specialized birds.

Incubator Returns

A crowd stopper at two previous Farm Shows, the Pennsylvania Poultry Federation will operate a plastic dome incubator that allows patient watchers to see life begin when chicks, turkey poult and ducklings break out of their shells

Many different cuts and meat products are possible from turkeys. Many of these will be shown in a refrigerated show window in the main lobby of the Farm Show Building. They will include half and quarter turkeys, smoked turkey, turkey sausage, turkey roll, turkey steaks, turkey barbecue and similar products.

This exhibit is made possible by the contribution of these products from the Pennsylvania turkey growers and Penn State.

★ Milk Market

New York, south east Pa. ning continued to utilize the bulk of surpluses.

Selling prices per 40 qt. unit, 40 per cent butter fat were \$1.50 higher pursuant to provisions of milk marketing order as of Jan. 1st in prices were unchanged to 25 cents lower on carlot or truck lots and as much as \$1.00

lower on L.C.L. sales ta was unchanged to lower. Wholesale selling ces per 40 qt. unit 40 per butterfat: New York S. E. Pa. open market prices P. & NJ approved or trucklot (min. 200 \$25.00 - 26.25, L.C.L. 50 cans) \$28.00 - 27

Patronize, Lancaster ing Advertisers.

Stop and Visit

US AT THE FARM SHOW

Booth No. 535 & 536

Get The Latest

Information On Farm

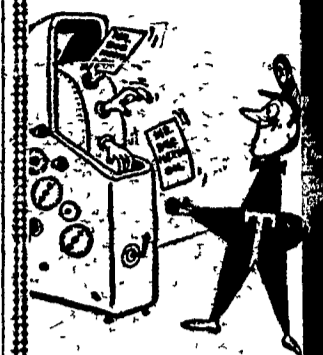
And Garden Seeds

DeKALB CORN

DeKALB CHIX

P. L. ROHRER & BRO., INC.

SMOKETOWN, PA.



AUTOMATIC DELIVERIES!

Based on the severity of the weather and your "degree-day" needs. No need to call us — and no worry about running short

GARBER OIL CO.

105 Fairview St. MOUNT JOY, PA. Ph. OL 3-2021

Mr. Poultryman!



I prefer . . .

FLORIN FEEDS

FOR HIGH QUALITY EGGS and MAXIMUM PRODUCTION

Call Mt. Joy OL 3-2411 Today!

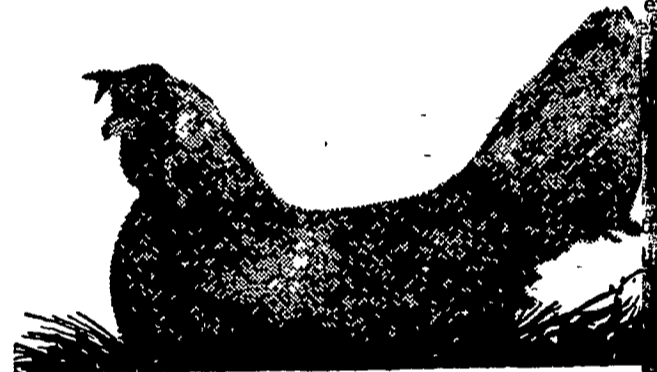
WOLGEMUTH BROS., Inc.

FLORIN, PA.

SIMPLICITY Garden Tractors
Snavely's Farm Service
NEW HOLLAND EL 4-2214

ATTENTION! MR. POULTRYMAN

INCREASE Egg Income WITH Farm Bureau Layer Mash



Farm Bureau Layer Mash Formulated to . . .

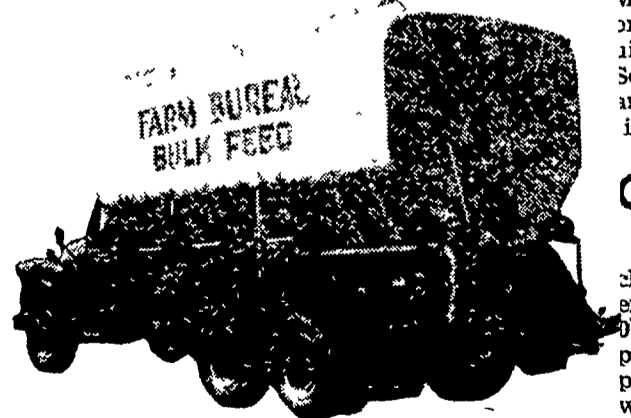
- ★ 16% ALL MASH LAYER
- ★ 22% LAYING MASH
- ★ BREEDING MASH
- ★ 40% POULTRY SUPPLEMENT (USE YOUR GRAINS)

1. Keep your Flock in Top Condition.
2. Minimize effect of Stress Conditions.
3. Keep your flock ON THE JOB.
4. Produce "Top Quality" Eggs

TRY IT NOW!

For complete information check with your Farm Bureau FIELDMAN or call one of the numbers listed below.

Prompt . . . Courteous Delivery in Bags or Bulk



Lancaster EX 4-0541 Manheim MOhawk 5-2466 New Holland ELgin 4-2146 Quarryville STerling 6-2126

VISIT US AT BOOTHS 374 - 389 AT THE FARM SHOW

Babcock's

Healthy Chicks MAKE GREAT LAYERS!



Bruce Babcock
Owner
Lancaster Co Branch

WE HOPE TO SEE YOU AT THE FARM SHOW



Russ Mease
Sales Representative

According to all predictions, this year's Farm Show in Harrisburg should be the finest yet. We are certainly proud to be taking part in it, and hope you will stop in and see us at Booth P4 in the Poultry Exhibit area.

We would like to tell you the kind of money-making performance you can expect from Babcock Bessies — one of the country's top strains of egg producers. We will be happy to tell you anything you would like to know about our hatchery, and to book your order for any hatch you choose.

Hope to see you at the Farm Show, Jan. 12-16.

BABCOCK HATCHERY, Inc.

R. D. 3, LITITZ, PENNA.

Phone MAdison 6-5872