

Dec. 13 Deadline For 4-H Farm Show Beef

Harrisburg, Nov 28th — Farm Show director John B. McCool reminded 4-H baby beef and lamb exhibitors today that December 13 is the deadline for entries in the 1959 Farm Show. The 43rd annual Farm Show will be held January 12 to 16, 1959.

Open class exhibitors were required to have their entries in by November 17, but 4-H Club entry deadlines are delayed until county and regional roundups can be held, McCool explained.

Another entry deadline fast approaching is the horse and mule pulling contest, McCool said. Deadline is December 20. The contest will be held in the Farm Show Arena on Wednesday evening of Farm Show Week.

There will be 23 classes in the 4-H sheep show. These include eight pen classes, and a championship pen class. To be shown are Hampshire, Shropshire, Dor-

est, Southdown, Cheviot and Suffolk lambs.

Breeding sheep of these six breeds will also be exhibited by 4-H Club showmen. Fitting and showmanship contests will be held.

Nineteen classes will be open to 4-H Club baby beef showmen. These include the lightweight, medium weight and heavy weight and heavy weight divisions of the three breed classes, Hereford, Angus and Shorthorn. County trios will be shown and breed champions selected. Special showmanship contests will be held with prizes to be awarded by breed associations.

The 4-H champion baby beef will be selected at 3 p. m., Thursday, January 15. Judge will be Thomas Merritt, Ohio State University, Columbus.

A maximum of 130 steers may be exhibited by 4-H Club members.

A record of \$62,287 50 in

Colombia Receives \$3.9-million Wheat Grant on PL-480

The USDA has announced issuance of authorization to Colombia to finance purchase of \$3,924,000 worth of wheat from U. S. suppliers under Title I of Public Law 480.

The authorization provides for purchase of approximately 50,000 metric tons of wheat, U. S. No. 2 grade or better, in bags. Only the following wheat will be eligible for financing:

1 Hard red spring wheat of the subclass dark northern spring, northern spring and red spring wheat;

2 Hard red winter wheat of the subclasses dark hard winter, hard winter and yellow hard winter wheat;

3 Mixed wheat containing only the eligible wheat in sections 1 and 2.

Wheat exported must have been grown in the continental United States.

Patronize Lancaster Farming Advertisers

premiums will be offered at the 1959 Farm Show.

CCC Soybeans Supplies OK'd For Barter List

The U. S. Department of Agriculture has announced that Commodity Credit Corporation on stocks of 1957-crop soybeans were eligible for export under the barter program effective Dec. 1, 1958.

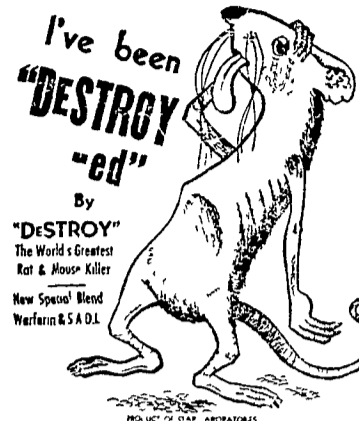
The CCC monthly sales list for December will carry the pricing basis for establishing the exchange value of soybeans for movement under a barter contract.

The soybeans may be exported as soybeans or may be domestically crushed and exported in proportions of 11 pounds of oil and 47 pounds of meal, cake or pellets for each 60 pounds of soybeans acquired from CCC.

The identical soybeans need not be exported; either the identical beans or substitute beans grading U. S. No 2 or better may be shipped under the barter transaction.

Soybeans and soybean products can be exported only under a "bilateral" transaction - that is, to the same country from which the bartered-for material comes - or a "multilateral" transaction.

Under a "multilateral" transaction, the foreign-produced material may come from a country other than the one to which the soybeans are shipped if the material import is tied in with the soybean export through auxiliary transactions.



By "DeSTROY"
The World's Greatest Rat & Mouse Killer
New Spanish Blend
Warfare R.S.A.D.L.

L. H. Brubaker
Lititz
Hempfield Mills
East Petersburg
A. L. Herr & Bro.
Quarryville
Musser Farms, Inc.
Columbia
Brown & Rea
Atglen
Jobbers
Herr & Co.
New Holland Supply
Miller & Hartman



Cut Prices!

TRAINS

Open Thurs.
Fri. - Sat.
Evenings

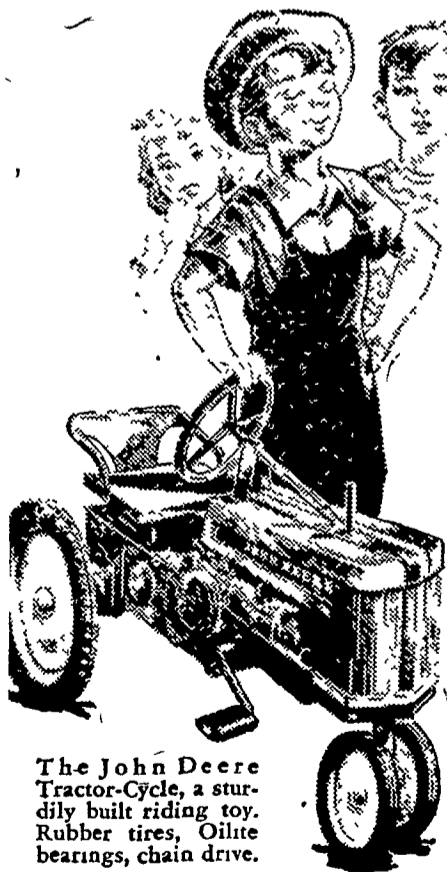


GROFF'S HARDWARE

S. RAILROAD AVE., NEW HOLLAND, PA.

PHONE: ELgin 4-0851

"I'm a John Deere man, myself"



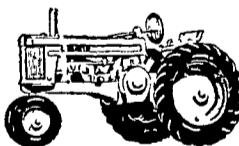
The John Deere Tractor-Cycle, a sturdy built riding toy. Rubber tires, Oilite bearings, chain drive.

Of course. And he comes by it naturally. For two of his greatest heroes are John Deere men—Dad and Granddad.

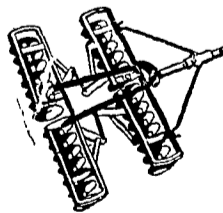
That's why your young one will take such pride in owning and riding a John Deere Tractor-Cycle—the toy tractor that looks just like the new John Deere Model "60"—that's built to take the punishment that youngsters are bound to put it to.

That's why your boy or girl will delight in the John Deere miniature line, too—the tiny scale models shown below that actually have functional parts and that bring a note of realism to the toyland farm.

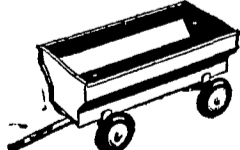
Order early in time for Christmas. See us soon.



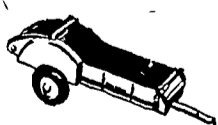
Tractor



Disk Harrow



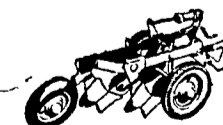
Wagon



Spreader



Combine



Plow

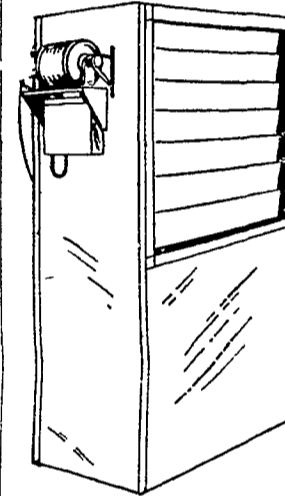
LANDIS BROS.

MANHEIM PIKE

LANCASTER PH. EX 3-3906

BUY TOY JOHN DEERE IMPLEMENTS FOR YOUNG FARMERS

Increase milk profits... keep herds healthy with

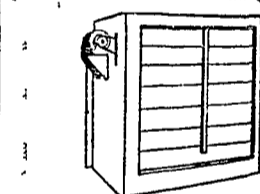


VENT-O-MATIC

BARN AIR CONDITIONER SYSTEM

This new Vent-O-Matic system actually conditions dairy barn air—circulates and changes air, controls humidity at all times—automatically.

It will pay big dividends in healthier herds and increased milk production, for you to investigate this revolutionary new dairy air conditioning system. Check up on its unique advantages today!



Low priced package fan gives efficient ventilation moves maximum amount of air at lowest possible operating cost

HERR'S Implement Store

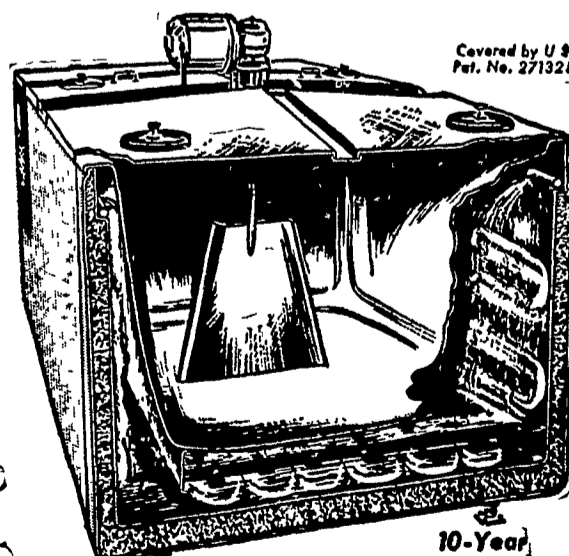
WEST WILLOW

Lanc. EX 3-8311

DAIRYMEN!

Get Full Information About the New

Patented ESCO "ICY-WALL" Bulk Milk Cooler



Covered by U.S. Pat. No. 271324

The exclusive, patented "ICY-WALL" Principle...

Cools your milk faster
Keeps your milk colder.

10-Year Warranty

Operates at lower cost

Costs less to install

Drop in, write or phone for Complete information. No obligation.

Stauffer Diesel Refrigeration

GORDONVILLE, RD1

Pa. Intercourse SO 8-8531