

Delmarva Broiler Average Hits 17.11 Lancaster Broilers

With 3.5 Million Weekly Volume

Volume of Delmarva region grown poultry processed or shipped live for week ending Nov. 8, 1958 was 3,551,803 head total, with 3,112,380 processed and 439,423 live shipment.

Weekly summary purchases averaged 17.11 per pound. The average weight of broilers and fryers slaughtered was 3.48 lbs. per head. Change in reported purchases compared to the previous week, plus three percent. Change in reported purchases compared to corresponding week last year was minus five per cent.

The Wednesday Delmarva undertone was weak, with offerings moderate, demand decreased. Prices paid at farm Monday — Wednesday, broilers and fryers 2½ and over, mostly 3¼ lbs. and over, 15.80 — 17, 821,900 head. Three per cent 15.80 — 16; 11 per cent 16 — 16¼; 13 per cent 16¼ — 16½; 34 per cent 16½ — 16¾; three per cent 16¾ — 17 inclusive; 18 per cent undetermined, and 18 per cent intra company transfers. Light type turkey fryers, 1200 head, 26 cent.

Eastern Shore Poultry Growers

Exchange, Nov. 11 volume offered 503,300 head, old 485,900 head. Prices ranged 15.80 — 16.60. Mostly 16.40 — 16.60. All sizes well distributed in most ranges. Under three lbs. none; 3 — 3¼. 19%; 3¼ — 3½, 45%; 3½ and over, 36%.

The Georgia Wednesday market found offering prices mostly one cent lower at FOB plant level, though mostly unchanged at farm. Demand irregular mostly slow to fair. Supplies generally ample to fully ample.

Broilers and fryers 2¾ — 3¼ lbs at farm 15-16, mostly 16, 448,500 head. FOB plants, 16-17, mostly 16, 200,900 head.

Prices paid and reported volume Monday - Tuesday: At farms. 15-16½, 1,011,100 head. Two per cent at 15; 90% at 16, one per cent at 16¼; two per cent intra company sales booked at 16; four per cent undetermined. FOB plants 16-17, 716,100 head. Four per cent at 16; 74% at 17; five per cent intra company sales at 16; 16 per cent intra company sales at 17, and one per cent undetermined.

(Continued from page two)

Risser, 19.6. 38. Harvey M. Zimmerman, 250 Belts, 18, NO SALE, 28.3 bid. 39. Harvey M. Zimmerman, 250 Belts, 18, NO SALE, 28.1 bid. 40. Jonathan Lapp, 1600 WV-C-Cap, 14-2, Longacre, 18.5. 41. Greider Leghorn Farms, 800 WV, 9-2, NO SALE, 16.6 bid. 42. John Longenecker, 2500 WRF, 16 Mo, Mellinger, 15. 43. D. E. Horn & Co. (Nelson Fitz), 3600 WV, 9-2, V. F. Weaver, 17. 44. James R. Landis, 3000 L-Y, Koser, 13. 45. D. E. orn & Co. (Richard Thompson), 8000 WV, 9-5, Col. Hill, 17.1.

46. D. E. Horn & Co. (Richard Thompson), 8000 WV, 9-5, Col. Hill, 17.1. 47. (Same), 10,500 IRW, 8-5, Grimes & Hauer, 16.6. 48. (Same), 10,000 WV, 8-5, Col. Hill, 17.1. 49. M&B (Paul Livengood 2000 WV, 10-1, NO SALE, 16.9 bid. 50. Mervin B. Nissley, 300 L-F-Y, Roy E. Ream, 12.

51. Melvin K. Barge, 2000 WX-Cap, 13, NO SALE, 19.2 bid. 52. Aaron J. Brubaker, 700 L-F-Y, Ream, 12.2. 53. Jonathan Lapp, 1650 WV-P-Cap, 14-2, NO SALE, 17.1 bid. 54. D. E. Horn & Co. (Nelson Fitz), 3400 WV, 9-2, NO SALE, 17 bid.

Turkeys Have Long History

Turkey in the wild stage was abundant in America long before the arrival of the early settlers. It provided food for them and was one of the main dishes of their first Thanksgiving dinner. It would have been used as the National Emblem instead of the bald eagle had Benjamin Franklin's suggestion been followed.

Even though the wild turkey was abundant in the area now the United States, Chester County Agent Robert A. Powers, Jr.

Wednesday New York Egg Market

Nearby Whites	
Extra Fancy Heavyweights	49
Mediums	38
Pullets	28½
Peewees	21 -22
Nearby Browns	
Extra Fancy Heavyweights	48½-49½
Mediums	36½-37½
Pullets	28½
Peewees	21 -22
Midwestern Mixed	
Fancy Heavyweights	46½
Mediums	34½
Pullets	26 -27
Standards	43
Checks	34
Midwestern Whites	
Fancy Heavyweights	47 -47½
Mediums	34 -35
Pullets	27 -28
Midwestern Browns	
Fancy Heavyweights	46½-47½

Impending export of \$2½ million of eggs and egg products to Spain under Public Law 480 and holiday stockpiling have had principles influence on a firm market tone.

Weekly Egg Price Review

	Nov. 6	Nov. 7	Nov. 10	Nov. 11
NEARBY WHITES:				
Ex Fcy Hywts	46½	47½	48	H
Mediums	35½	35½	36½	O
Pullets	27	27	27	L
Peewees	20 -21	20 -21	20 -21	I
NEARBY BROWNS:				
Ex Fcy Hywts	46½	46½	48½	A
Mediums	34½	35½	36½	Y
Pullets	27	27	28	
Peewees	20 -21	20 -21	20 -21	

Copyrighted 1958 By Urner-Barry Co.

claims it is probably not the ancestor of our domesticated bird. The wild turkey of Mexico which is larger was probably its ancestor.

The Aztec Indians in Mexico were a highly civilized race, living in permanent homes and cul-

tivating the land. They were no doubt first to domesticate the turkey. Nomadic Indians in the area inhabited by the Eastern wild turkey found it abundant and easy to obtain in the wild stage in almost any quantity.

Artex Motor Oil	20% Hog Feed	\$4.40
2 gal. can	15% Hog Feed	\$3.60
Altman's Milk Replacer	Fine Chick Feed	\$4.80
25#	B Starter	\$4.20
Calf Manna 25#	Grower	\$4.10
Altman's Calf Starter	16% All Mash	\$3.80
25#	20% Quality Mash	\$4.00
Fitting Ration 100#	24% Super A Mash	\$4.14
16% Super A Dairy	Broiler Ration	\$4.95
Horse Feed	Rabbit Pellets	\$4.85

Special chop for steers; sheep or growing heifers \$3.

ALTMAN'S CASH FEED STORE

WILLIS H. WEAVER MANAGER

947 Harrisburg Ave. Phone Lanc. EX 4-7715

10c per hundred discount on half ton lots or more. PRICES SUBJECT TO CHANGE—WE DELIVER.

Your Headquarters for Quality Farm Supplies

FEED

High Energy — Palatable
Maximum Nutrition

SEED

Tested — High Purity
High Germination

LANC. COUNTY



FARM BUREAU

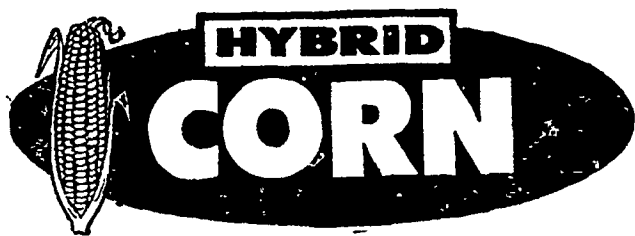
FERTILIZER

Free-Flowing
Pulverized & Granular

PETROLEUM

Fuel Oils Gasoline
Motor Oil Grease

MORE EARS per acre
MORE CORN per ear
MORE SEED per dollar
with **Farm Bureau**



BOOK YOUR

supply before
DECEMBER 15

SAVE
50c (PER BUSHEL)

Order NOW!

Pay Nothing
til
Spring Delivery

Call or Visit Us Today

Lancaster
EX 4-0541

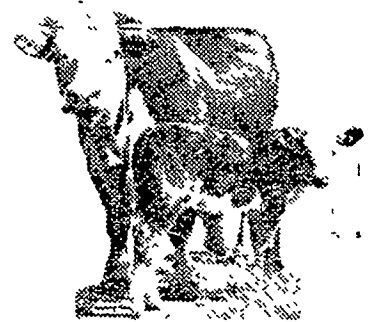
Manheim
MO 5-2466

New Holland
EL 4 2146

Quarryville
ST 6-2126

WIRTHMORE CALVING FEED

A true Maternity Ration!



* Protection before calving:

- 1—Helps put the finish and condition on the cow necessary for easy calving and high production.
- 2—Supplies calves with the extra critical nutrients required the last few weeks of pregnancy.
- 3—Helps maintain cow health through proper nutrition at calving time.

* Protection after calving:

- 1—Less udder congestion means full milk production sooner. Feeding these "easy on the cow" ingredients reduces the stress of depending on body reserves.
- 2—More condition is maintained for holding production later in the lactation.
- 3—Try Wirthmore Calving Feed and let the results speak for themselves.

WIRTHMORE FEEDS

PAUL M. RESSLER & SON

PARADISE, PA.

Ph. Strasburg OV 7-3931