

## Keystone Farm Prices Off Two Points

HARRISBURG — A two point decline in the index of prices received by Pennsylvania farmers for all farm products in the 30 day period ended October 15 was reported today by the State Department of Agriculture.

The Pennsylvania Crop Reporting Service said the index stood at 238 on October 15, nine points below the same date last year. An index of 100 is equal to the 1910-14 base price period.

While the crops index increased three points in the period, the rise was offset by a five-point drop in the livestock and products group index, the Crop Reporting Service added.

In the livestock group, an eight point gain in the index of dairy products, attributed to the seasonal increases in milk and butterfat prices was wiped out by an eight point drop in the meat animals index. Pennsylvania farmers received lower prices for beef cattle, cows, hogs, and lambs during the period, the survey showed.

Lower prices received for farm chickens, broilers, turkeys and eggs caused the poultry and eggs index to fall 14 points, the survey added.

A three point rise in the crops group was attributed to rises in the food grain and vegetable indexes which more than offset drops in feed grain and fruit. Higher prices for wheat caused a two point gain in the food grain index and the vegetables index rose one point.

Nationally, the index of prices received by farmers dipped slightly more than 2 per cent (six points) during the 3 day period.

### FARM INCOME TAX COURSE OFFERED

The fourth annual Farm Income Tax and Social Security Short Course will be given at The Pennsylvania State University, December 8 and 9, 1958, announces Associate Chester County Agent Joseph H. Way.

Attending will be bankers, magistrates, lawyers, insurance agents, accountants, justices of the peace, farmers, and any others who may help farmers to make up their farm income tax returns.

## Hi-School Effort Vital For College Success

"If you are a young person thinking of going to college, do your best while in high school. It is getting tougher to be admitted to college and it is harder to stay there once you have arrived," advises David R. McClay, Assistant Director of Resident Instruction in the College of Agriculture at the Pennsylvania State University.

Dr. McClay says greater stress is being placed on mathematics and English. By the fall of 1961, only high school graduates who have successfully completed at least one year of high school algebra and one year of high school plane geometry can major in agriculture at Penn State.

The 20 curriculums in the College of Agriculture require a firm background in mathematics — in such courses as chemistry, botany, physics, zoology, bacteriology and agronomy.

Starting soon, Penn State will admit only those students who can immediately take the first university English course required of all students. Previously, students who did not pass an English placement test were allowed to take a special review course.

The cost of such remedial

work has been terrific," Dr. McClay points out. "Also, students who start out deficient in a subject get 'out of phase' and are always 'irregular' in scheduling courses," he adds.

Students who rank high in high school usually do well in college, studies show. About 66 per cent of those who rank in the upper one fifth of their high school class will finish college.

## PINE WOOD SHAVINGS

For Poultry and Livestock Bedding

Call EXpress 4-5412

Convenient — Sanitary — Serviceable

Deliveries Made Over Two Tons  
Trailer Load Prices, Bagged or Bulk

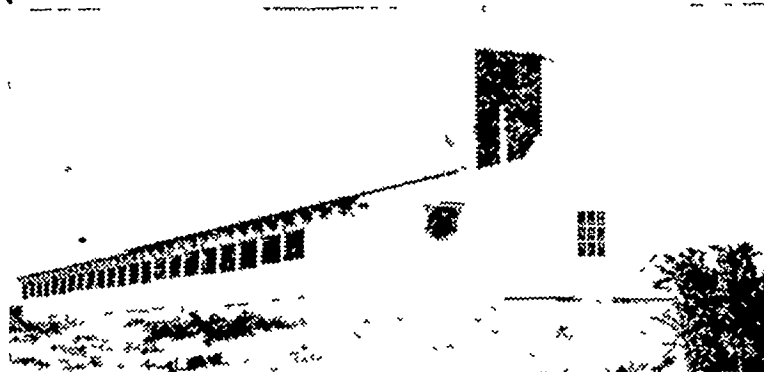
**HAROLD B. ZOOK**

220 Lampeter Road,

Lancaster, Pa.

## KUIPERS BROS., Inc.

Dutch - Made Package Poultry House



Completely erected on your farm

Layer House as low as \$4.50 per bird

Broiler House as low as \$1.35 per sq. ft.

Features: Big Dutchman Automatic Feeders and Waterers; Ridge-Type Ventilation; Herr's Bulk Bins.

For More Information Contact

**KUIPERS BROS., Inc.**

New Holland, Pa. Ph. EL 4-2149

Lloyd M.

**BURKHOLDER**

Chick Hatchery

Red or White  
Vantress Cross  
White Leghorns  
R-B Red Cross

U S Approved  
Pullorum Clean



Call RE 3-0613

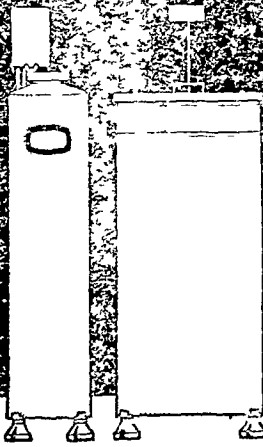
R D I—Ephrata, Pa.

1 MI. NW of Clay on Stevens Rd.

SOFT WATER  
AUTOMATICALLY

with the NEW  
**DURO**

FULLY AUTOMATIC  
WATER SOFTENER



You get plenty of perfectly softened water from every faucet with a Duro fully automatic water softener. Softens automatically - no regenerating attention required. Backed by Duro's 43 years of experience manufacturing softeners and filters. Let us explain how easily you may own a Duro Softener.

**ONLY \$289.00**

**P. W. Strickland**

(Distributor)

31 S. Queen St., York, Pa.  
Phone 5854

**John Meisenberger**

110 Dickinson Ave.

Lancaster, Pa.

Phone EX 4-3006

Write or Phone For Name of Nearest DURO dealer



## SEIBERLING - COMMUTER

Unsurpassed for traction in mud & snow  
Fully Guaranteed Against All  
Road Hazards

Auto — Truck — Tractor Tires — Recapping

**H. M. KRADY**

608 N. Prince St.

Lancaster, Pa.

Phone EX 2-9507

## DAIRYMEN

*...We have it ready for you!*

Save money and do a "top-production" feeding job by combining home grown grains with B-B 32% Protein mixing feed.

STOP IN AND WE WILL  
WORK OUT THE BEST  
FORMULA TO FIT  
YOUR NEEDS



• We carry all BULL BRAND Dairy Rations •

**S. O. Trupe**  
East Earl, R. D. 1

**Ira B. Landis**  
779 Valley Rd., Lane.

**B. G. Mellinger & Son**  
Willow St., R. D. 1

**M. S. Graybill & Son**  
Bareville

**Clem Hooper**  
Intercourse

Pioneer Manufacturers of High Efficiency Poultry Rations

**HUBBARD FARMS**  
Chickens  
**MAKE GREAT LAYERS**



**HUBBARD 496 Brown Egg Cross**

Profit-Bred for Large Brown Eggs

**HUBBARD Kimberchik K-137**

Profit-Bred for Large Chalk-White Eggs

also

**16 Week Old Started Pullets**

**HUBBARD FARMS**  
Chickens LANCASTER, PA.

MANHEIM PIKE — TEL. EX 2-2155