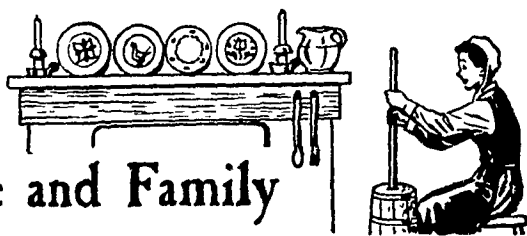


For the Farm Wife and Family



(Continued from page nine)

Juice and vanilla. Beat in eggs, one at a time. Add flour mixture, nuts and chocolate. Shape on waxed paper in two 12" rolls. Roll up and chill overnight. Preheat oven to 375 degrees. Unroll and cut in 1/8-inch slices. Place on ungreased cookie sheet. Bake 8 minutes. Makes about 14 dozen.

SUGAR-COATED LOLLIPOPS

Melt one package (6-ounces) semi-sweet chocolate bits and two tablespoons shortening with one-third cup water over hot water, stir until smooth. Cut one quart vanilla ice cream into 8 slices and insert wooden skewers in each. Coat ice cream slices with chocolate, and dip in sugar-coated cereal. Freeze until firm and wrap.

CHOCOLATE QUICKIES

BASIC RECIPE

1 6-ounce package semi-sweet chocolate bits
4 tablespoons light corn syrup
1 tablespoon water
2 cups any ready-to-eat cereal
Combine chocolate bits, corn syrup and water and melt over hot (not boiling) water. Remove from water and gently stir in the cereal. Drop by teaspoonfuls on waxed paper-lined cookie sheet. Chill till firm. Makes 2 1/2 to 3 dozen.

VARIATIONS

1 Follow basic recipe — use

George E. Hoar

All Forms of Insurance

Fire Hospitalization
Auto Health
Liability Accident

Homeowners Policies

Phone HI 2-4393

State Road Gap, Pa.



Strong "Package"

Big, strong-shelled eggs are scarce and wanted.

The U.S.D.A. says that strong shells plus good whites, help to hold Fresh Quality longer.

You can have your Egg Quality Program "built in" if your layers are Mount Hope Queens. We break out thousands of eggs, so we are sure.

QUEEN eggs are really High Quality in a Strong "Package". . . just what you need for highest prices. Breakage alone is said to cost \$300 a year on a 2000 bird plant.

Mount Hope Queen chicks can be bought year round.



Johnson's Hatchery

EPHRATA
Ph. RE 3-2980

only three tablespoons light corn syrup. Add one of the following in place of cereal

- 1 cup mixed candied fruit
- 1 1/2 cups coconut
- 1 cup dates, cut up
- 1 1/2 cups raisins
- 1 cup salted nuts

2. Follow basic recipe — use only three tablespoons light corn syrup. Drop by teaspoonfuls on waxed paper-lined cookie sheet. Decorate with nuts, chicken corn, mints, gum drops, tinted coconut, shivered almonds.

3. Semi-sweet Dip for Party Pretties — Follow basic recipe, omitting cereal and using four tablespoons light corn syrup.

a. Cookies — invert cookie-slide diagonally in semi-sweet mixture to coat top of cookie halfway. Remove excess by scraping edge on rim of bowl.

b. Pretzels — hold pretzels with tongs or forks. Dip in semi-sweet mixture to cover.

c. Marshmallow, caramels, dates, nuts, etc — With fingers or toothpick, dip in semi-sweet mixture and swirl gently to coat top, and part of sides, if desired.

Fudge is always a favorite —

NUT-MALLOW FUDGE

3/4 pound (48) marshmallows

1/4 cup butter
1 tablespoon water
1/8 teaspoon salt
1 6-ounce package (one cup) semi-sweet chocolate bits
1 teaspoon vanilla
1 cups nuts, chopped
Combine marshmallows, butter, water and salt and bring to full boil over moderate heat, stirring constantly. Boil 1 minute. Remove from heat and stir in till smooth the chocolate bits and vanilla. Add nuts. Pour in greased pan 10" x5" x3". Chill till firm. Makes about one and one-fourth pounds.

1 jar marshmallow cream (5 ounce of 10 ounce jar)
2/3 cup evaporated milk
1/4 cup butter
1 1/2 cups sugar
1/4 teaspoon salt
2 6-ounce packs semi-sweet chocolate bits
1 teaspoon vanilla
1/2 cup nuts, chopped
Combine the marshmallow cream, milk, butter, sugar and salt and bring to a full boil. Boil 5 minutes over moderate heat, stirring constantly. Remove from heat and stir in the chocolate till melted. Add vanilla and nuts. Pour in greased 8" square pan and chill till firm. Makes about two and one-fourth pounds.

BEAN, CARROT, AND CABBAGE SALAD

Two cups cold cooked dry beans
One-half cup coarsely shredded carrots
One-half cup shredded cabbage
One small onion, grated
One-fourth cup pickle relish
Salt
One third cup french dressing
Combine ingredients and mix lightly. Serve very cold. Serves 4.

Good Light Needed

For Sewing Comfort

Good lighting may be a problem without recognizing it. The convenience of electric lighting is accepted but not enough importance is placed on the comfort that comes from good lighting.

Light from an electric bulb can be harsh. It needs to be softened by a shade and a diffusing bowl or shield. It needs to be controlled so it doesn't glare.

Light can be absorbed and light can be reflected. Dark colored walls absorb light and cut down the amount available for "seeing" jobs. Light colored walls reflect and make the light in the room more useful.

Colored lampshades absorb light. A colored lampshade is acceptable if it has a white lining to reflect light. A lampshade may be made of thin material and the outline of the bulb shows through making an uncomfortable glare.

The size and shape of a lamp affect the amount of useful light from it. Height needs to allow for a spread of light over the work being done. Width of the shade across the bottom controls the area covered by light.

Look for a lamp that has the elements of good lighting. This requires careful shopping. When you combine the requirements of good lighting with the desire for a well-designed lamp, pleasing in appearance, the problem of selecting a lamp is even more difficult.

DAIRY COWS NEED DAILY EXERCISE

October is a good time to start thinking about things that can be done during the winter months, to help maintain efficient milk production. One would be to provide a good place for cows to exercise each day during the stabling season.

A cow, like any other animal, needs exercise in order to stay in good health. She cannot work at top efficiency if she is stanchioned all day long, seven months of the year. Just fifteen minutes in the exercise lot, twice each day, will provide the exercise the cow needs.

Start the exercise periods as soon as cows are brought into the barn. Continue it every day until pasture season. Weather conditions seldom get too bad if the cows become accustomed to being out.

PROTECT BLOOMING MUMS FROM FROST

It's a shame to end the fall's bloom in the garden just because of an ordinary fall frost, when it needn't happen. Fall mums withstand cold temperatures very well, but frost will damage open blooms.

To prevent frost damage get old burlap sacks to cover all the mum plants. Any similar material will do. Gently place the material over the plants to be protected before dark. If there is a frost, it may form on the burlap, but won't harm the flowers. Don't remove the cover in the morning until frost has melted.

Mr. Poultryman!

I prefer . . .



FLORIN FEEDS

For High Quality Eggs and Maximum Production

Call Mt. Joy OL 3-2411 Today!

WOLGEMUTH BROS., INC.
FLORIN, PA.

DAIRYMEN

...We have it ready for you!

Save money and do a "top-production" feeding job by combining home grown grains with B-B 32% Protein mixing feed.

STOP IN AND WE WILL WORK OUT THE BEST FORMULA TO FIT YOUR NEEDS



• We carry all BULL BRAND Dairy Rations •

M. S. Graybill & Son
Bareville

Clem Hooper
Intercourse

S. O. Trupe
East Earl, R. D. 1

Ira B. Landis
779 Valley Rd., Lanc.

B. G. Mellinger & Son
Willow St., R. D. 1

Pioneer Manufacturers of High Efficiency Poultry Rations.

Report of First Pennsylvania Random Sample Test

COMPLETED SEPTEMBER 15, 1958

Stever Sterling Strain X 300 is second highest of all pens (48) entered in the first Pa. Random Sample Test with a net profit of (over feed and chick cost) \$4.68.

Had second best feed conversion, 4.2 and laid 233.4 eggs per pullet housed. Liveability for 500 day test was 98%.

Stever Sterling Strain Cross 300 Profit \$4.68
Average Profit for whole test — 48 pens 3.587

Sterling Strain X Advantage \$1.095

Sterling Strain X Profit \$4.68

Average Profit of all other pens in 1st Quarter 4.42

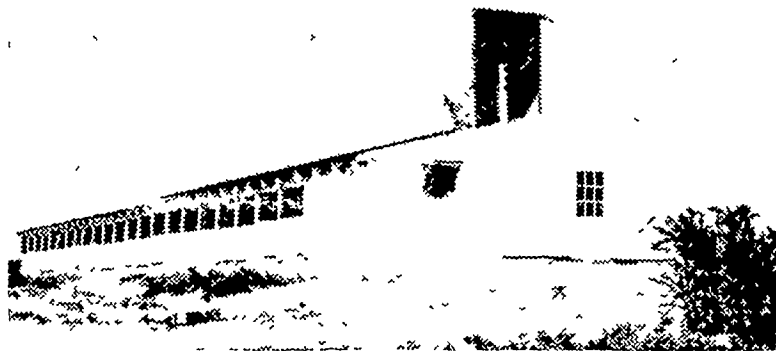
Sterling Strain X Advantage .26

ORDER THESE MONEY MAKERS AT

WEAVER'S HATCHERY
Telephone Ephrata RE 3-0885 LITITZ, R. D. 4, PA.

KUIPERS BROS., Inc.

Dutch - Made Package Poultry House



Completely erected on your farm

Layer House as low as \$4.50 per bird

Broiler House as low as \$1.35 per sq. ft.

Features: Big Dutchman Automatic Feeders and Waterers, Ridge-Type Ventilation, Herr's Bulk Bins.

For More Information Contact

KUIPERS BROS., Inc.
New Holland, Pa. Ph. EL 4-2149