



MARTIN DOMBACH, right, Quarryville, RD 1, Captain of the Penna FFA Dairy Products judging team which was entered this week in the National Dairy Products Judging contest at Waterloo, Iowa is shown practicing for the big meet with William M. Fredd, voc-ag teacher at Solanco and coach of the Penna team. Martin was graduated from Solanco in June. He, Fredd, other team members and William Jackson, Peach Bottom left for Waterloo, last Saturday. LF PHOTO

Co. Youth Captains State FFA Team

Martin Dombach, Quarryville, RD 1, 17-year-old son of Mr. and Mrs. Paul Dombach, was competing this week in the National FFA Dairy Products Judging contest, held in conjunction with the National Dairy Show, Waterloo, Iowa. The 1957 graduate of Solanco high school won his right to represent Pennsylvania in the national competition by placing first in Pennsylvania contests in June. He was accompanied to Waterloo by William M. Fredd, Solanco voc-ag teacher and coach of the Pennsylvania team which Dombach captains. Other team members are Richard Poorbaugh, Berlin, member of the Brothers Valley FFA, and Charles Houck, Pen-Argyll FFA. Part of the group's award trip will consist of tours of Chicago and other points of interest.

State

Crop Round-up

HARRISBURG—Another week or 10 days of frost-free weather is needed for a major portion of the 1958 Pennsylvania corn crop to mature, the State Department of Agriculture said today. Corn is maturing well in southern and central counties and kernels are dented in most of the central and some of the northern counties, a State Crop Reporting Service survey for the week ended Monday shows. Picking has started in scattered sections of sections of southern Pennsylvania.

Scattered frosts were reported in some sections of mountainous northern counties Monday. Emporium, Cameron County, reported a low of 29 degrees.

Tobacco buying started during the report period in Lancaster County, earliest in many years. Tobacco cutting is nearly completed with the exception of some late planted fields. The crop is reported to be "quite desirable" to buyers.

Picking of Smoke House, McIntosh, Cortland and Delicious apples has started.

Purple Concord grape harvest is expected to start in the Erie area around October 10. Peach harvest is complete except for a few late varieties for fresh market.

Potato digging continues. Hay and pasture fields are in good condition.

NEW HAMPSHIRE HENS DO WELL ON OATS

In a two-year test by the Kentucky Agricultural Experiment Station to determine the merits of various grains and grain mixtures for poultry, it was found that New Hampshire hens fed oats as the grain ration produced the most eggs and had the lowest mortality rate. Similar groups of hens fed corn alone as the grain feed had the lowest egg production rate, the highest mortality, and required the most feed to produce a dozen eggs. Other grain mixtures used in the Kentucky experiment were half corn and half oats, and half corn, one-fourth oats and one-fourth wheat, both of which mixtures compared favorably with oats alone in the production and feed conversion but mortality was higher. Deaths from cannibalism were found to be greater among the hens fed corn alone and for those fed a mixture of corn, wheat and oats.

Temperatures during the week ranged from a high of 91 in Middletown Friday to the low of 29 at Emporium the following Monday. Between 7:00 p. m. Friday and 7:00 p. m. Saturday more than four inches of rain fell at Myerstown and Virginville in Berks County. Precipitation for the week was near normal in the southwest, slightly below normal in the northwest and well above in the east.

relative costs of grains, the Kentucky researchers conclude that the mixture of half corn and half oats appears to be the most practical of the four grain rations tested with New Hampshire hens. Considering performance and

THIS FALL USE VAPAM
on your Tobacco Seed Bed

RESULTS:

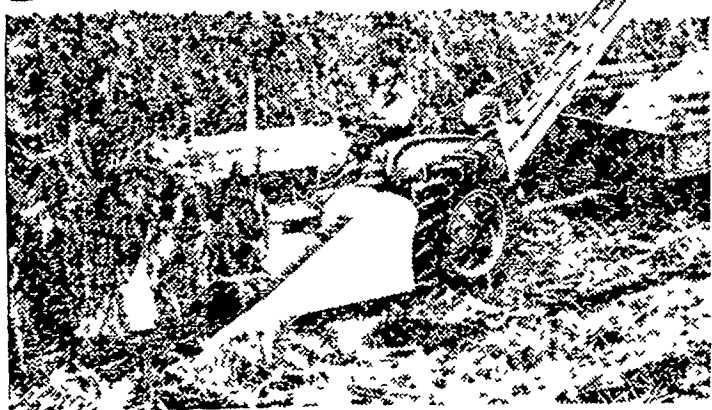
- No Weeds —
- No Damping-off
- No Nematode Problems
- More Seedlings
- Stronger Seedlings
- Better Crop Profits

VAPAM—Stauffer's new soil fungicide that is safer to handle, easier to apply. Needs no cover or other expensive application equipment.

P. L. ROHRER & BRO., INC.

SMOKETOWN, PA.
Ph. Lanc. EX 22659

RAISING MORE CORN PER ACRE?



You should see **this picker**

This new Allis-Chalmers No. 17 Picker and D-17 Tractor form a new team built especially for heavier corn belt yields. Capacity and performance come from four outstanding features:

- Big capacity for clean work comes from . . .
 - Rotary feeders above the husking rolls
 - Rubber-on-tubber husking rolls
- Corn-saving performance comes from . . .
 - Adjustable stripper plates that save ears, reduce shelling
 - Power Director on D-17 for complete control over field speeds

Learn how Allis-Chalmers can help you save more grain . . . cleaner . . . easier. See us now . . . ahead of picking time.

LISTEN TO the National Farm and Home Hour, Saturdays, NBC



ALLIS-CHALMERS SALES AND SERVICE

N. G. Myers & Son
Rheems, Pa.

L. H. Brubaker
Lititz, Pa.

Snavelys Farm Service
New Holland, Pa.

L. H. Brubaker **Nissley Farm Service**
Lancaster, Pa. Washington Boro, Pa.

Mann & Grumelli Farm Serv. **R. S. Weaver**
Quarryville, Pa. Stevens, Pa.

For Laying Pullets... STEP UP PRODUCTION

with

Miller & Bushong

No. 26 Early Bird All-Mash Laying Ration or
No. 11 Early Bird Egg Mash and Scratch Grain Ration
STEPS UP QUALITY TOO!

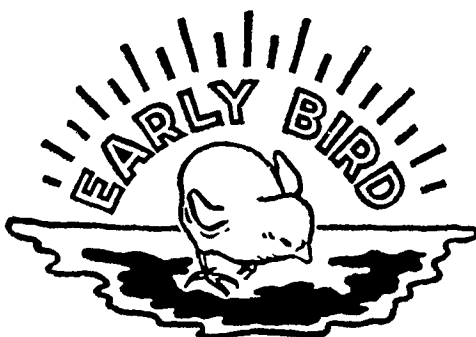
BEAUTIFUL LIGHT YOLKS, OF COURSE
COSTS STEP DOWN!

A Balanced, Energy Packed Feed Like Early Bird Will Keep Your Cost Per Dozen Eggs Surprisingly Low — Improve Your Profits!

Ask Miller & Bushong's Local Serviceman To Visit Your Farm — Tell You More About Early Bird No. 26 or No. 11, and Explain Miller & Bushong's Free Management — Quality Control Check-up for Young Laying Flocks.



Today Call Lancaster EXpress 2-2145



Miller & Bushong, Inc.

Rohrerstown, Pa.

Ph. Lancaster EX 2-2145

Manufacturers of Poultry and Live Stock Feed Since 1875.