

## Slow-Low Market Marks Exchange's 4th Anniversary, Autumn Slump Hits

LANCASTER, Sept. 18 — The average price for a low 26 lots of broilers at the Lancaster Poultry Exchange auction this week, dropped to 16.51 cents per pound, after holding at 17.21 for two weeks previously.

With a large gathering of growers and buyers on hand to help the Exchange celebrate its Fourth Anniversary, the market slipped to the now low as fewer than half as many lots sold as during the same week in 1957.

Listed lots totaled 28, with 107,300 birds. A total of 32 lots were carried, with 113,550 birds. Only 26 sold, with 83,775 birds.

There were 19 broiler lots, with 81,250 broilers, bringing from 16.2 to 17.5 per pound, with the average of 16.51 marking the lowest average in four years. In the corresponding week of 1957, 54 lots were offered. 43 sold, with 130,570 birds, including 124,700 broilers, bringing .18 to .20, averaging 18.61.

Here is the sale by lot number, seller with grower in parenthesis, number and breed, age in weeks and days, buyer and price per pound.

1. Cassel's Mill, Inc (Charles D. Warfel II), 5,000 Indian River, 9-3, Daniel K. Good, 17.5. 2. Cassel's Mill, Inc. (Charles D. Warfel II), 5,000 Indian River, 9-3, Meader's Poultry, 16.7. 3. J. Lloyd Hossler 1200 Vantress 9-6, Walter C. Mellinger, 16.4. 4. H. M. Stauffer & Sons (Emanuel Flaud) 2500 Vantress 9-3, Victor Weaver, 16.4. 5. Longenecker's Hatchery (Henry Z Longenecker) 1650 Vantress 1, Roy E Ream 16.2. 0

6. Longenecker's Hatchery (Henry Z Longenecker 1800 Vantress 10 Roy E Ream 1.4. 7. Walter B Groff 4000 Vantress 9-6 Walter C Mellinger 16.3. 8. H. Robert Nylm 1900 Vantress 10 Daniel K. Good 16.5. 9. Miller & Bushong (Lester Weaver) 5000 Vantress 9 Meaders Poultry 16.6. 10. M&B (Richard Rudisill 1500 Vantress 10 Carl B Risser 16.9. 11. M&B (Naomi Jane Blessing 500 White Cross Cockerels 9-3, College Hill Poultry 16.2. 12. M&B (Claude H

## Chicago Slaughter Market Steady

CHICAGO, Sept. 24 — CATTLE: 1200 slaughter steers weighing 1150 lbs generally active, mostly steady on lightweight higher; broadest action on yearlings scaling 900 — 1050 lbs steers weighing 2250 and up slow, steady to weak, generally more active than earlier and prices only steady with Tuesday. Cows active, steady to strong. Bulls scarce, active, steady to 25 higher. Vealers slow, steady to weak with late Tuesday or weak to \$1 lower. Stockers and feeders fully steady. Half dozen loads prime 1115 — 1300 lb slaughter steers \$28.75-\$29. One load of lights at \$29, feedlot mates of cattle at same price last Wed Load near 1300 lb steers also \$29. Load 1275 lb Nebraska included at \$28.75. Bulk choice and prime steers \$26.25-28.50. Although 50 head string mixed choice and prime around 1550 lb, sold at \$26. These feedlot mates of \$26.50 cattle, last Wed. Mixed choice and prime under 1100 lb steer yearlings sold at high of \$28.25. Two loads prime and choice mixed \$28.50 and (Continued on Page Three)

Hess 10000 Indian River 9-6, no sale 16.2 bid. 13. M&B (Millard Osborn) 750 White Rock 13 Carl B Risser 22.5. 14. M&B (Ed Decker) 16000 Vantress 9-2 Victor Weaver 16.4.

15. M&B (Ed Decker) 14000 Vantress 9-2 Victor Weaver 16.4. 16. Wirthmore Feed Co. (H. Raymond Charles) 6000 Vantress 9-2 Victor Weaver 16.3. 17. D. E. Horn & Co. (Elliot Shirk) 2600 Vantress 9, Daniel K Good 16.3. 18. L. E. Horn & Co. (Elliot Shirk) 2400 Vantress 9 Daniel K. Good 16.3. 19. Clair E. McMillen 3800 White Rock 9 No sale 16.2 bid. 20. Elvin H. Nolt 475 Vantress 13-6 Carl B. Risser 23.0. 21. Elvin H. Nolt 375 Vantress 13-6 No sale 20.0 bid.

22. Harry Brubaker 150 White Cross Fowl 11 mo. Carl B. Risser 13.2. 23. Harvey M Zimmerman 1200 Vantress No sale 16.4 bid. 24. Harvey M. Zimmerman 600 Vantress 9 John Thomas 17.4.

25. Paul Rohrer 3600 Vantress 9-2 Allen Clark 16.5. 26. Keifer's Mill (Luther P. Klinger) 4000 Vantress 9-6 No sale 16.6 bid. 27. L. E. Henninger & Son (Curtis L. Moyer) 5500 Vantress 9-3 No sale 16.4 bid.

28. (Wenger's Mill Inc. (Daniel Lehman) 3000 Vantress capettes 13 + Harry Weaver 2.3. 29. Earl Jones 150 Leghorn Fowl 1 yr. Carl B. Risser 10.1. 31. Wenger's Mill Inc (Daniel Lehman 1500 Vantress Daniel K. Good 18.0. 32. Wenger's Mill Inc (Daniel Lehman) 1500 Vantress Daniel K. Good 17.1.

## Lancaster Cattle Market Hits 12-Year Volume High with 7,000 Plus Monday

by Hal Churchill,  
Acting in Charge, Market News Branch  
WEDNESDAY TO WEDNESDAY REVIEW

Receipts Week to Date Cattle, 4522, Calves, 702, Hogs, 1423; Sheep, 390.

CATTLE Run larger than same time last week and supply consisted of 70 per cent stockers and feeders, near 20 per cent fed slaughter steers and 10 per cent cows and bulls. Slaughter steers uneven weights 1150 lbs down moderately active, fully steady, heavier steers slow, weak to 50¢ lower Slaughter heifers scarce, steady. Cows moderately active, steady to 25¢ lower. Bulls fairly active, fully steady. Stockers and feeders moderately active, steady to 25¢ lower, most decline on 900-1100 lb feeder steers Load near 1050 lb high-choice slaughter steers with end prime \$29 Load 1518 lb mostly prime slaughter steers \$28 Bulk 1000-1350 lb choice slaughter steers \$26.50-

27.75, with few loads 1060-1150 lb high-choice and prime \$28-28.50. Good and low-choice slaughter steers \$24.50-26.50, standard and low-good \$23-24.75. Good and choice slaughter heifers \$24-26.50 small lot 875 lb high-choice heifers \$27. Commercial cows \$20-21, cutter and utility \$17-20.75, canner and low-cutters \$15-16.75. Utility and commercial bulls \$22.50-25, few high-commercial \$25.50. Cutter bulls \$20-22.50. Good 800-1100 lb fed yearling bulls \$25-27. Good and choice 800-1100 lb feeder steers \$24.50-27.25, medium and good these weights \$23-25.50. Good and choice 600-800 lb stocker and feeder steers \$25.75-29.50, with two loads 774 lb choice feeders \$28.75. Medium and good \$24-26.50. Common and medium 600-1000 lb stocker and feeder steers \$21.50-24.50. Medium and good 450-550 lb stock steer calves \$26-30, load 470 lb mixed good and choice \$32.50. Load 800 lb medium stock bulls \$23.25.

(Continued On Page Three)

## STOCKERS & FEEDERS

of all grades and weights

## ON SALE DAILY

This is your CENTRAL MARKET

to sell CATTLE, CALVES, HOGS & SHEEP

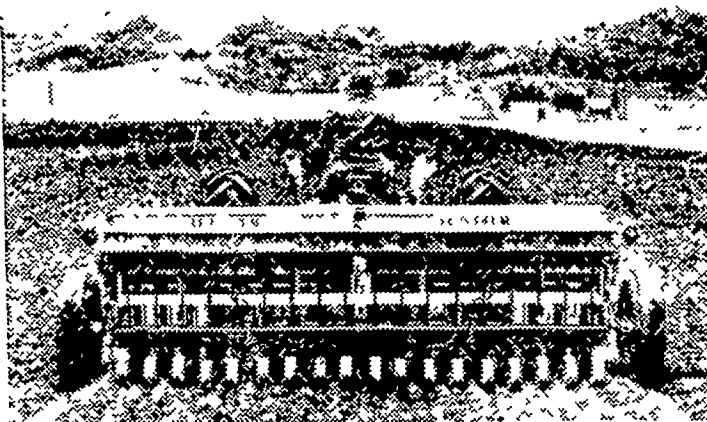
Contact your

COMMISSION FIRM

for good service at

## THE UNION STOCK YARDS

Lancaster, Penna.



## New! EXPANDED! ALL-CROP Drill Line

Drill more acres a day and get a good stand — whatever your farming method. With ALL-CROP drills, torsion spring control assures even depth. Zero pressure press wheels are available to give proper seed contact with soil.

Standard drills have divided hopper . . . feature separate band placement of seed and fertilizer. Grass seed attachment, too!

New models include plain drills with over-size, single-bin hoppers that hold up to 19 bushels of grain . . . require fewer stops for refilling. One 16-run model has 10-inch disc spacings . . . others 7-inch.

Come in . . . let us show you an ALL-CROP drill . . . made to fit your farm.

All-Crop is an Allis-Chalmers trademark.

LISTEN! The National Farm and Home Hour, NBC, Saturdays!



## ALLIS-CHALMERS

SALES AND SERVICE



N. G. Myers & Son  
Rheems, Pa.

L. H. Brubaker  
Lititz, Pa.

Snavelys Farm Service  
New Holland, Pa.

L. H. Brubaker  
Lancaster, Pa.

Nissley Farm Service  
Washington Boro, Pa.

Mann & Grumelli Farm Serv.  
Quarryville, Pa.

R. S. Weaver  
Stevens, Pa.

## Altman's Milk Replacer for calves, chickens or pigs. 25 lbs. \$3.95

Calf Manna 25 lbs. \$2.39

Altman's Calf Ration 25 lbs. only \$1.50 — 100 lbs. \$5.10 Pex Emulsion Block to help your hens thru molting season. Try some and see the difference! 25 lbs. \$2.40, 50 lbs. \$4.40. Why not try some of Altman's Super A 16% Dairy . . . only \$69. per ton, less \$2. discount makes it \$67. We have Broiler Ration at only \$5.05.

Fine Chick Feed \$4.95 B Starter N F Z \$4.40  
B Grower Med \$4.25 Crumbles . 20¢ extra

## ALTMAN'S CASH FEED STORE

WILLIS H. WEAVER MANAGER

947 Harrisburg Ave. Phone Lanc. EX 4-7715

10c per hundred discount on half ton lots or more.

PRICES SUBJECT TO CHANGE—WE DELIVER.



GET faster, lower-cost gains with

## NEW PREMIER MOREA LIQUID FEED SUPPLEMENT

Only Premier MOREA liquid feed is guaranteed to contain ethanol. Scientists have found that rumen organisms in the stomachs of cattle and sheep need a hydrogen donor for top efficiency in building protein. The ethanol in Premier MOREA liquid feed is an effective hydrogen donor. When you feed Premier MOREA supplement with roughage and grain, you get faster gains and finish, and more high-quality meat.

Look what PREMIER MOREA liquid feed gives you!

- Labor-saving, free-choice, liquid feeding.
- Faster, lower-cost gains and high finish.
- Top quality meat with less waste fat.
- More milk at lower-cost from dairy cows



Premier MOREA is a Product of  
HESPENHEIDE and THOMPSON, INC.

York, Pennsylvania  
PHONE YORK 82210

## SIMPLICITY

### Garden Tractors

Snavely's Farm Service  
New Holland EL 4-2214

## CYTOLOGY SEZ



A MAN CAN'T AFFORD TO ARGUE IF HE IS WRONG - IF HE'S RIGHT HE DOESN'T HAVE TO

There's no argument about our quality and economy.

Used Specials!  
Farmall M Tractor  
"C10" mounted corn  
picker

## Cope & Weaver

WILLOW ST.

Ph. Lanc. EX 3-2824