



KEEP AMERICA STRONG might well be the slogan of the onion growers. The onions shown here however are not as strong as some grown in the county. These are the produce of some of the almost 3,000 Sweet Spanish onion plants imported from Texas by airplane last spring. Future Farmers in all the departments of Vocational Agriculture in the County took orders from

parents and neighbors, pooled the orders and had the plants flown here early in April. Joseph K. Owen, Pequea R1, shows some of the onions of the twenty bushels he has harvested recently. He says they are mild and of very good flavor. Some of the larger ones measured well over four inches in diameter.

LF Photo

## State Laying Flock Number Gain Slightly From 1957 Low

HARRISBURG—Chickens raised on Pennsylvania farms—excluding commercial broilers—in 1958 are expected to number 21.6 million head, the State Department of Agriculture said today.

This will be the second smallest number of farm chickens raised since first estimates were made in 1924. Last year was the smallest number on record.

A Pennsylvania Crop Reporting Service report shows that the number of farm chickens advanced by 8 per cent from the 1957 low, but still is 29 per cent below the 10 year average.

Pennsylvania maintains the fourth position nationally in number of chickens on farms.

The average number of layers in Pennsylvania farm flocks during the first half of 1958 was generally below the level of last year. In January flock size was 4 per cent below a year ago but numbers slowly climbed to 3 per cent above the 1957 average in June.

Offsetting the decrease in number of layers has been the steady increase in rate of lay. This has advanced 38 per cent since 1940 and 12 per cent since 1950.

Egg production in Pennsylvania has increased 74 per cent since 1940 and 13 per cent since 1950.

Iowa and Minnesota are now leading states in number of chickens raised on farms. California has slipped to third position.



TOBACCO GROWERS—Don't risk wet-weather planting delays next spring!

## Kill weed seeds this fall with one application of DuPont VPM

SOIL FUMIGANT

Treat beds with Du Pont VPM soil fumigant this fall and you'll effectively control weed seeds . . . be assured of abundant, healthy seedlings next spring. VPM saves labor, cuts production costs, requires no gas-tight cover. It's easy to apply as a soil drench with power equipment or hand sprinker. Available in 1, 5, or 30 gal.

containers. Ask your supplier today for Du Pont VPM!

On all chemicals, follow label instructions and warnings carefully



SOIL FUMIGANT

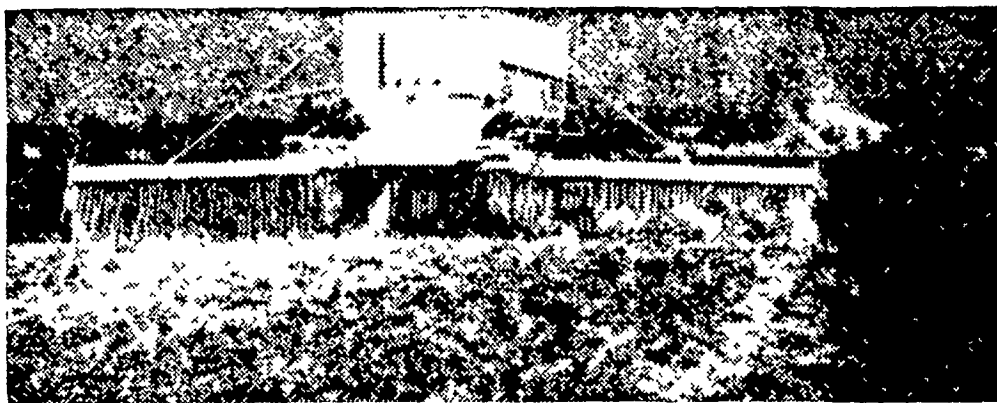
Better Things for Better Living through Chemistry

VPM and other DuPont Agricultural Chemicals distributed by  
**J. C. EHRLICH CO.**

738 E. Chestnut St., Lancaster.

Phone EX 3-2489.

## MARTIN'S LIMESTONE



Order your Limestone now for even spreading by our modern spreaders.

### It Pays to Use Limestone Regularly

- Increases crop yield
- Improves your land
- Corrects acid in your soil
- Returns at least 3 to 1
- Insures growth of clover and legumes

**Ivan M. Martin, Inc., Blue Ball, Pa.**

Telephones: New Holland ELgin 4-2112

Terre Hill Hillcrest 5-3455

## FARMERS SUPPLY

### SWIFT'S FERTILIZER

You must choose a top quality plant food to produce more bushels of top quality wheat and other small grains. The wheat growers we know who consistently produce high yielding wheat use BRIMM, Swift's specialized crop-maker.

For the first time Swift is producing Brimm in granules—the finest granular qualities you can buy. Gran-u-pels assure you even, free-flowing distribution through ANY KIND of fertilizer spreader. When you consider that, at an application of 350 lbs. per acre, every tablespoon of plant food has to feed approximately 200 wheat plants, IT HAS TO BE GOOD! Our flo-fusion process assures every plant a full ration of nutrients.

Move up to Brimm or Blenn—you'll be glad you did.

#### GRAN-U-PELS

#### ANALYSIS

Brimm (for Wheat) . . . 5-10-10  
Pasturgo (for Grass) . . . 5-10-10

#### Specialized CROP MAKERS

Pasturgo (for Grass) . . . 2-12-12  
Blenn (for Wheat) . . . 4-12-12  
RED STEER . . . 5-10-5  
3-12-6  
0-20-20



ALL ABOVE FERTILIZERS PACKED 80 LB. PER BAG  
PRICES UPON REQUEST

Good Pastures Mean Good Livestock  
—Use PASTURGRO—



PASTURGRO is specially formulated to meet pasture needs. It supplements plant nutrients in your soil. It gives the balance of growth elements needed to produce grass and legumes with higher feeding value and greater carrying capacity.

Use Pasturgo During September to Improve Your Grassfields.

### SEEDS FOR FALL PLANTING

WINTER RYE  
—Tetra Petkus  
—Balboa

WINTER OATS  
—Cert. Le Conte  
—Cert. Du Bois

SEED WHEAT  
—Cert. Pennoll  
—Cert. Thorne  
—Cert. Seneca

WINTER BARLEY  
—Cert. Wong  
—Cert. Kenbar

Cert. Dual Wheat — Plant Now,  
for grazing this fall. Will produce big crop  
of wheat next season.

### HEAVY BLACK POLYETHYLENE FOR TRENCH SILO COVERS

| HEAVYWEIGHT — BLACK      | ROLL    | \$15.95 |
|--------------------------|---------|---------|
| (10 FT. WIDE x 100 FT.)  | CUT FT. | .22     |
| (16½ FT. WIDE x 100 FT.) | ROLL    | \$25.95 |
|                          | CUT FT. | .33     |
| (20 FT. WIDE x 100 FT.)  | ROLL    | \$31.45 |
|                          | CUT FT. | .39     |
| HEAVYWEIGHT — CLEAR      | ROLL    | \$13.95 |
| (9 FT. WIDE x 100 FT.)   | CUT FT. | .19     |

## FARMERS SUPPLY

137 EAST KING STREET

Open Daily 8:30 to 5:30 — Friday Until 9:00