

## Consumer Role In Agriculture is Farm Show Theme

HARRISBURG — "Agriculture — Everybody's Business" will be the theme of the 1959 Pennsylvania Farm Show the Farm Show Commission announced today.

The State Farm Show will be held next January 12 through 16, making it the 43rd since the event was founded in 1917.

State Agriculture Secretary William L. Henning, chairman of the Farm Show Commission, today pointed out that the theme was chosen to emphasize the importance of agriculture to every Pennsylvanian, "especially the consumers of Pennsylvania farm foods."

"More than one third of the people in the Commonwealth depend on agriculture for all or part of their living," Henning said. "The growing, processing, transportation, selling and serving of farm food products is a huge business. Another mammoth business has developed in caring for the farmer's needs in producing this food."

For the coming show the commission has provided a record cash premium offering of \$62,237.50. This is more than \$1000 above the 1958 record premium total. Premium allocations represent increases for 12 of the 30 departments of the next Farm Show.

Pennsylvania dairymen will vie for a total of \$17,034, the largest amount offered in any of the 30 Farm Show departments. Beef cattle showmen will be trying for \$9,653, and poultrymen will divide \$9,328.50.

The Farm Show Folk Dance

Festival, presented for the first time at the 1958 show, will get a boost at the 1959 Farm Show. Premium awards offered winning square and folk dance teams total \$870, an increase of \$120. A maximum of 480 people may enter the event which will give a total of 60 sets opportunity to strive for the prize money.

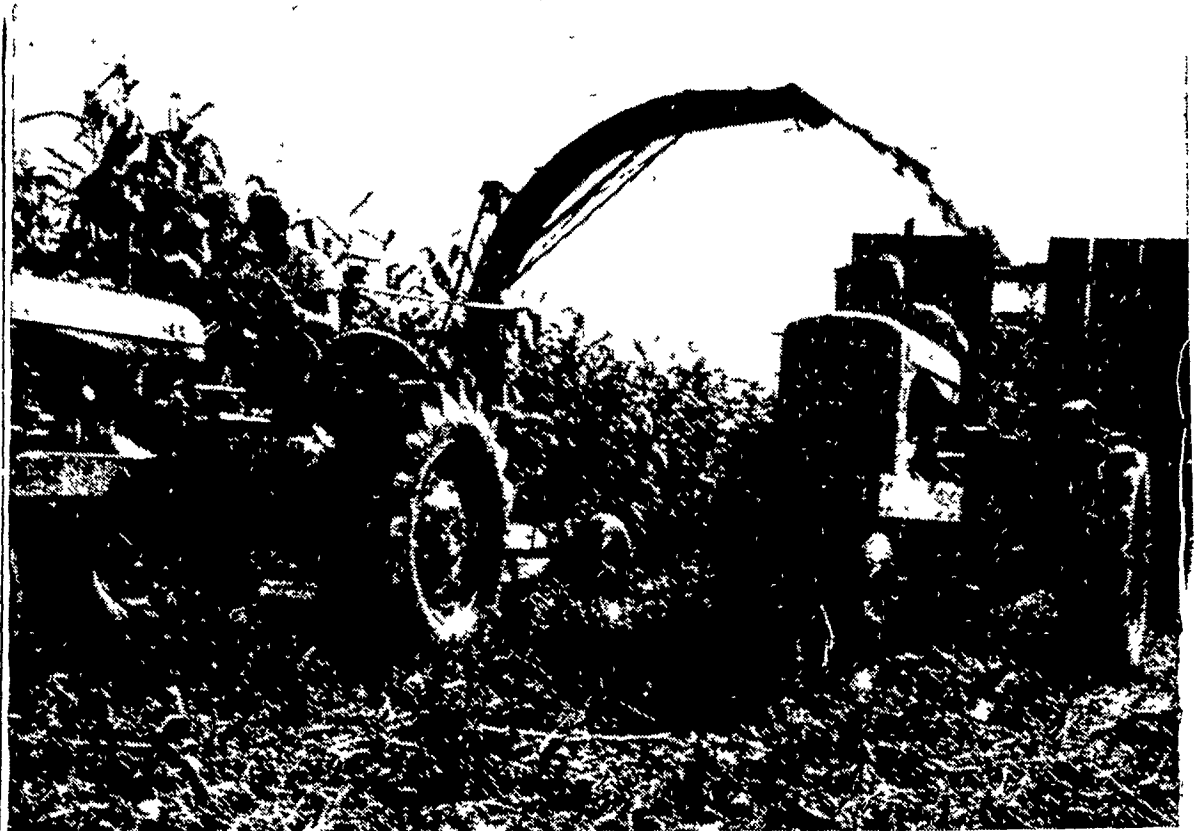
Premium totals for other departments include horses, \$3,850; sheep, \$4,950; swine, \$2,940; dairy products, \$210; corn, \$475; small grains, \$357; potatoes, \$279; grass silage, \$396; hay, \$432; tobacco, \$258; apples, \$2,407; edible nuts, \$318; vegetables, \$1,095; maple products, \$186; apiary products, \$910; Christmas trees, \$249; wool, \$178; eggs, \$640; baby chicks and poults, \$190; dressed turkeys, \$150; home economics, \$2,746; school demonstration contest, \$600; school exhibitors, \$820; tractor driving, \$160; potato grading, \$108; and horse pulling contest, \$500.

## Record Crop Year

The biggest crop year on record is forecast as of August 1 by the Crop Reporting Board.

An estimated all-crop production index of 113 would be considerably more than the previous record of 106 set in 1948 and equalled in 1956 and last year. The per-acre yield index covering 28 leading crops is estimated at 137, a record high, and 8 per cent above last year.

Prospects were for record per-acre yields for corn, wheat, oats, rice, rye, dry beans, fall potatoes, cotton, sorghum, and record production of soybeans, wheat, and barley.



SILO FILLING is in full swing on many county farms this week. Corn is tall and silos fill rapidly. Clarence (Pete) Bevins, Peach Bottom, on the tractor at left does custom harvesting for Orie Kilby (on the other tractor) on his farm near New Texas,

Peach Bottom R1. Kilby filled his 10x45 foot upright silo with the first four acres of his 16 acres of silo corn. He plans to store the rest of his crop in a trench silo.

LF Photo

## Soil District Directors to Meet; Hackman to Present Annual Report

Benefits to be reaped by Pennsylvania farmers from the National Plowing Contests and Conservation Exposition held August 21 and 22 at Hershey will highlight the annual conference of Pennsylvania Soil Conservation District Directors to be held September 18 and 19 in Sunbury.

The Pennsylvania Association of Soil Conservation District Directors also will hold its annual meeting, during the conference in Sunbury. Henry Hackman, Manheim, Lancaster County, is president of the association through

out the year, including participation in the conservation exposition wheel, one of the main centers of attraction at the exposition.

State Agriculture Secretary William L. Henning, chairman of the State Soil Conservation Commission, will stress some of the benefits to accrue to the State's agriculture through the exposition during a session of the Commission to be held in conjunction with the conference.



## SURE-FLOW Harvesting

SAVES CORN, TIME and MONEY

Early picking, with your own Allis-Chalmers Corn Picker, is the sure way to highest yields and lowest field losses. SURE-FLOW Design takes heavy yields in stride:

- Long, low snouts and adjustable stripper plates for sure, gentle, non-stop picking.
- Rotary feeders, keep ears on the move to rubber-on-rubber husking rolls.
- 2-Row Model 33 fits WC, WD and WD-45 Tractors.
- 1-Row Model 35 fits any 2 or 3-plow tractor.

**ALLIS-CHALMERS**  SALES AND SERVICE

L. H. Brubaker Lancaster, Pa.	Nissley Farm Service Washington Boro, Pa.
Mann & Grumelli Farm Serv. Quarryville, Pa.	R. S. Weaver Stevens, Pa.
N. G. Myers & Son Rheems, Pa.	L. H. Brubaker Lititz, Pa.
Snavelys Farm Service New Holland, Pa.	

FOR...

# Quality Eggs

WITH

## Beautiful Light Yokes

FOR...

EFFICIENT LOW COST PRODUCTION

FOR...

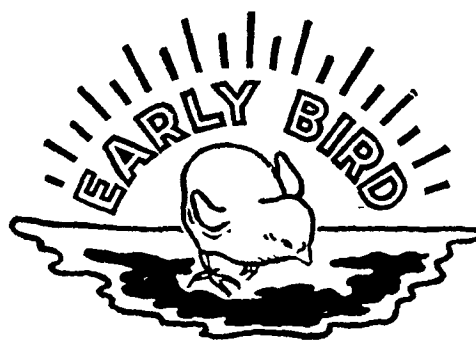
The Finest Poultry Service Anywhere

GET

# EARLY BIRD RATIONS

Just Contact Your

Early Bird Representative or Call  
Lancaster EX 2-2145 direct.



## Miller & Bushong, Inc.

Rohrerstown, Pa.

Ph. Lancaster EX 2-2145

Manufacturers of Poultry and Live Stock Feed Since 1875.

NOTE: A few helpful suggestions on "When You House Your Pullets" are contained in our Farm Service Bulletin No. 8-6. If you did not receive a copy please call or write and we'll mail one to you at once. No charge, of course.