

Broiler Market Averages 17.68 At Lancaster Poultry Auction

The average price paid for broilers at Lancaster last week dropped to less than 18 cents. Average price paid at the auction was 17.68 cents per pound. Nine lots were withdrawn from the sale on bids from 17 to 18½ cents. In all, 86,975 birds were sold in 31 lots.

The corresponding sale in 1957 moved 139,250 broilers at an average price of 22.76 cents.

Here is the August 28 sale by lot number, seller with grower in parenthesis, number and breed, age in weeks and days, buyer and price per pound.

1 Millport Roller Mills (Jacob A. Stahl) 1000 Indian River White 9-3, no sale, 17 cents bid 2 Millport Roller Mills (Richard Blessing) 2000 Vantress 9-3 no sale 17½ cents bid 3 Moore Farms 400 Vantress 9-3 no sale 17 cents bid 4 Ellis Denlinger 200 frvers no sale, 13½ cents bid 5 John Yarnell, 5000 Vantress, 9-4 Allen Clark, 17½ cents
6 John Yarnell 5000 Vantress 9-4, Allen Cluk 17½ cents John Yarnell, 2000 Vantress 9-4, Allen Clark 17½ cents 8 John Yarnell, 2000 Vantress 9-4 Allen Clark, 17½ cents 9 William Brunner, 3000 Vantress 9 H Weaver Jr, 17½ cents 10 Francis Shultz 7000 Vantress 10-2 Meaders Poultry 17½ cents
11 Francis Shultz 7000 Vantress 10-2, Davis Poultry, 17½ cents 12 Miller & Bushong (William Glick Jr.), 900 Vantress, 9-2 no sale, 17½ cents bid 13 John Wenger, 950 Vantress capettes, 12, Roy E Ream 23 cents 14 Ben F Lapp Jr 400 White Rock capettes 13-6 no sale 22 cents

bid 15 Ben F Lapp Jr, 375 White Rock capettes, 13-6, John Thomas, 23 cents

16 Aaron Shenk, 4000 Vantress, 10, College Hill 17½ cents
17 Aaron Shenk, 6000 Vantress, 10 College Hill, 17½ cents 18. J. J. Hess II (J Emanuel Allgyer), 1500 Vantress, 9, Roy E Ream, 17½ cents. 19 Leon Hoover, 5000 Vantress, 10-2, H Weaver Jr, 17½ cents 20 M&G (Glenn Deardorff), 2750 Vantress, 10, Daniel K Good, 18½ cents
21 M&B (Elam B Reihl), 1750 Vantress capettes, 10-2, W C Mellinger & Son, 24¾ cents 22 M&B (Charles Nissley), 1700 Vantress, no sale, 17 cents bid 23 M&B (Joshua King), 3000 Indian Rivers, 9-2, no sale, 17 cents bid 24 M&B (Elmer Garber), 5000 Vantress, 9-6, College Hill, 17½ cents 25 M&B (James Pinkerton), 4000 Vantress, 9-6, W C Mellinger & Son, 17½ cents

26 M&B (Harry Boyer), 6000 Indian Rivers 9-6, College Hill, 17½ cents 27 John V Erb 4000 Indian Rivers, 9-3 Daniel K Good, 17½ cents 28 George W Jackson & Son, 1450 Light Fowl Yearling Victor Koser 14¼ cents 29 Norman Boyer, 1000 Vantress, 10-2, Daniel K Good 18 cents 30 Paik Herr, 900 Vantress capettes, 14-2 College Hill, 24¾ cents

31 Parke Herr, 825 Vantress capettes 14-2 Marvin Swiegart, 24¼ cents 32 Kenneth Noll 2800 Vantress, 10, Roy E Ream 18½ cents 33 Christian Becker, 500 Vantress 9-2, Daniel K Good, 17½ cents 34 Amos Funk

Cattle Higher In Active Trade At Chicago Yards

CHICAGO, Sept. 2 — CATTLE AND CALVES 24000 arrivals promising to fall short of the estimate by several hundred head. Trade generally active, slaughter steers and heifers steady to 25¢ higher, spots up 50¢. Cows steady to 25¢ higher. Bulls and vealers steady.

STEERS Load prime 1400 lb slaughter steers \$28.75, few loads prime steers still unsold, loadlots, mostly prime steers scaling 1100 lbs up \$28-28.50. Load 1337 lb weights included at \$28, feedlot mates of cattle last week weighing 1387 lbs at the same price, choice steers \$26-27.75, mostly \$26.50 up, two loads 1275 lb. Nebraskas included at \$27.50, standard and good steers \$23-26, good steers at \$26 carrying an end of choice.

HEIFERS Several loads mostly prime 1015-1100 lb heifers \$26.75-27.50, most good and choice heifers \$23.50-26.50, heifers at \$26.50 usually high choice with an end of prime.

COWS AND CULLS Few standard cows \$20.50-22, utility and commercial cows \$18-21, mostly \$20.50 down, load whiteface 1025 lb utility grass cows carrying a cutter end \$18.50, canners and cutters \$14.50-18.75, cutters at \$18.75, high yielding Holsteins

Please turn to page 14 for additional market news.

(Robert Wantz), 2400 White Rock capettes 12, College Hill, 24¾ cents 35 Harvey M Zimmerman, 500 BBB TH, 21 no sale, 20½ cents bid

36 C B Kauffman, 2000 Vantress 9, no sale, 17½ cents bid 37 Elias Frey, 500 Vantress, 10-2, Bettinger, 17½ cents 38 Elmer Metzler, 625 Light Fowl yearling, Victor Koser, 14¼ cents 39 M&B (Elam B Reihl), 1750 Vantress capettes 10-2, W. C Mellinger & Son, 26½ cents 40 Amos Funk (Robert Wantz), 1500 White Rock capettes, H Weaver, Jr 24½ cents.

Slaughter Steers and Heifers Steady at Lancaster This Week

by Hal Churchill,
Acting in Charge, Market News Branch

LANCASTER, Sept. 3 — Receipts this week to date Cattle, 3353, Calves, 576, hogs, 1253; sheep, 295

CATTLE Receipts consisted of 60% stockers and feeders, near 25% fed slaughter steers and 15% cows and bulls. Slaughter steers slow, mostly steady. Slaughter heifers scarce, steady. Cows slow 25-50¢ lower, most decline on utility and commercial. Bulls fairly active, fully steady. Stockers and feeders moderately active, steady. Load 1140 lb mixed high-choice and prime slaughter steers \$28.60. Few loads 1050-1200 lb high-choice steers with prime end \$28.25-28.50. Bulk 1000-1300 lb choice steers \$26.75-28. Good and low-choice slaughter steers \$24.75-26.75, standard and low-good \$23.50-24.75. Few head 700-900 lb good and choice slaughter heifers \$24-26.50. Commercial cows \$20.21, cutter and utility \$16.75-20.25, canner and low-cutter \$15-16.50. Good 800-1100 lb fed yearling bull \$25-27. Utility and commercial bulls \$22.50-25, cutters \$20-23.

Good and choice 800-1050 lb feeder steers \$24.50-27.50. Medium and good these weights \$23-25. Good and choice 600-800 lb stocker and feeder steers \$25.50-29.00, medium and good \$24-26. Few good and choice 400-500 lb stocker calves \$28.50-31. Common and medium 600-1000 lb stocker and feeder steers \$21.50-24.

CALVES: Vealers moderately active, steady to 50¢ lower, most decline on good and lower grades. Good and choice vealers \$29.34, high-choice and prime \$35.36. Standard and low-good \$24.50-27.50, utility and standard \$19.50-24.50.

HOGS: Trading moderately active, barrows and gilts fully steady to 25¢ higher. U S No 1-3 mixed weight and grade 190-230 lb barrows and gilts \$21-21.50, few lots No 1 these weights \$22-22.50, 230-270 lbs \$20-21. Sows steady, No 1-3 300-600 lbs \$16.50-19.50.

SHEEP 300 Slaughter spring lambs slow 50¢ to \$1.00 lower. Good and choice 70-95 lb slaughter spring lambs \$22-24.50, utility and low-good \$18-22, few culls \$16.50-17.50.

STOCKERS & FEEDERS

of all grades and weights

ON SALE DAILY

This is your CENTRAL MARKET

to sell CATTLE, CALVES, HOGS & SHEEP

Contact your

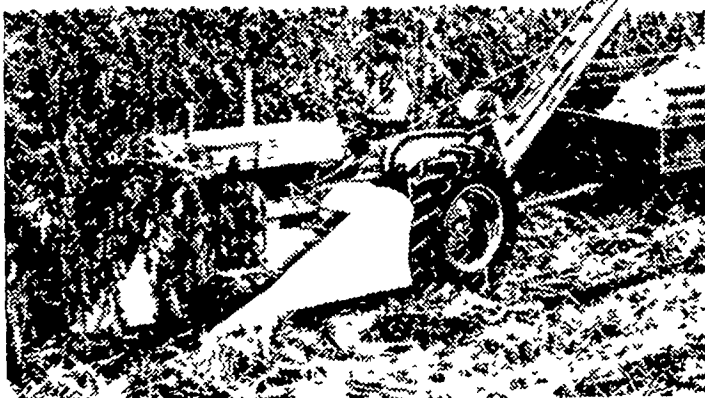
COMMISSION FIRM

for good service at

THE UNION STOCK YARDS

Lancaster, Penna.

RAISING MORE CORN PER ACRE?



You should see
this picker

This new Allis-Chalmers No. 17 Picker and D-17 Tractor form a new team built especially for heavier corn belt yields. Capacity and performance come from four outstanding features.

Big capacity for clean work comes from . . .

- Rotary feeders above the husking rolls
- Rubber-on-rubber husking rolls

Corn-saving performance comes from . . .

- Adjustable stripper plates that save ears, reduce shelling
- Power Director on D-17 for complete control over field speeds

Learn how Allis-Chalmers can help you save more grain cleaner . . . easier. See us now . . . ahead of picking time.

LISTEN TO the National Farm and Home Hour, Saturdays, NBC



ALLIS-CHALMERS

SALES AND SERVICE

Snavely's Farm Service

New Holland, Pa.

N. G. Myers & Son

Rheems, Pa.

Mann & Grumelli Farm Serv.

Quarryville, Pa.

L. H. Brubaker

Lancaster, Pa.

L. H. Brubaker

Lititz, Pa.

R. S. Weaver

Stevens, Pa.

Nissley Farm Service

Washington Boro, Pa.

Get Top Milk Production



with **RED ROSE**

Dairy Feeds

and

Supplements

Follow these 4 steps

to keep your cows producing at higher, more profitable levels—

1. Provide plenty of fresh water.
2. Keep cows dry and comfortable.
3. Feed all the good quality forage your cows will eat. (variety increases consumption).
4. Use RED ROSE DAIRY FEEDS and SUPPLEMENTS—they are a concentrated source of all essential nutrients.

GET RED ROSE DAIRY FEEDS FROM THESE DISTRIBUTORS

MOUNTVILLE FEED SERVICE

R D 2, Columbia, Pa.

LEROY GEIB, EST.

R D 2, Manheim, Pa.

JOSEPH M. GOOD & SON

R D 1, Bird-in-Hand, Pa.

WALTER & JACKSON, INC.

Christiana, Pa.

JOHN H. BONHOLTZER

R D 4, Lancaster, Pa.

SNADER'S MILL

R D. 1, Stevens, Pa.

I. B. GRAYBILL & SON

Refton, Pa.