

## Broiler Market Shows Firmness; Average 19.2 at Lancaster Auction

LANCASTER July 31 — The broiler market showed more firmness in the weekly sale at the Lancaster Poultry Exchange than had been noted in the past two months. A total of 87,905 broilers averaged 19.12 cents a pound.

Only three lots of birds were withdrawn from the sale.

The range was from 18½ to 2¼ cents a pound. Two per cent of the sales were at 18½ cents, 42 per cent at 18¾ cents, nine per cent at 19 cents, 20 per cent at 19¼ cents, one per cent at 20 cents, one per cent at 20¼ cents, one per cent at 20¾ cents, and one per cent at 21¼ cents.

Four lots, 11,000 head, of capettes sold for 23¼ to 25¼ cents a pound, and a lot of 300 light hens sold for 15¾ cents.

A year ago the broiler market had taken its first downturn of the season when the average was 23.57 cents a pound. Some 105,750 broilers were sold.

A tabulation shows that the past July has seen record low broiler prices for the month at the Exchange. The best year was 1955

when the low price paid in the month was 27 cents a pound and the high was 33 cents. The high during the past month was 23 cents and the low 17½ cents a pound.

Volume, too, was down. The high year was 1956 when 757,145 birds were sold. Only 492,520 birds were sold during the past month.

Here are the results of the July 31 sale by lot numbers, seller with grower in parenthesis, number and breed, age in weeks and days, buyer and price per pound.

1 Mary E' Forry, 900 Vantress 9, John E Rettinger, 21¼ cents  
2 Caleb K Hershey, 1,000 Vantress, 9-2, Daniel K Good, 19¼ cents  
3 John H Martin, 1,500 White Rock, 12, Roy E Ream, 19¼ cents  
4 J Robert Musser, 900 Vantress, 9-6, Walter B Lehman, 19½ cents  
5 Jacob G Hess, 1,000 Vantress, 9-1, John N. Thomas, 20 cents  
6 S M Fisher 4,000 Vantress, 9-1, Victor F Weaver Inc, 18¾ cents  
7 Clayton H Shenk, 1,200 Vantress, 10-2, John N Thomas,

## Allentown Raiser Re-Elected Angus State President

John K Wood of Allentown was re-elected president of the Pennsylvania Angus Asso at the group's annual meeting held July 18 at Pennsylvania State University.

John Weist of York, was named vice-president and Dr Robert R Stoner of Lewisberry, was re-elected secretary-treasurer. Three directors named were John Graham of Pughtown; William Batchelor of Downtown and Miles Rumbaugh of Dayton.

The 50 people who attended heard Francis Enciso, fieldman for the group, give the annual report and Dr Stoner relate the treasurer's report.

After the election, James Goyner, fieldman, American Angus Association, introduced William Brannard, Association director, who gave a progress report on the work of the Association and its public relations department.

19½ cents 8 Dietrich & Gambrell (Edgar Miller), 1,000 White Rock cockerel capettes, 12, College Hill, 24½ cents  
9 Kreamer Feed Mill (Raymond Nipple), 1,000 White Rock capettes, 12-5, Carl B Risser, 23¼ cents  
10, Kreamer (Feed (Raymond Wipple), 1,000 White Rock capettes, 12-5, Carl B Risser, 24 cents

11 Edgar M Martin, 3,000 White Cross, 9-6, Walter C Mellinger, 19½ cents  
12 Edgar M Martin, 1,980 White Rock, 9-6, College Hill, 19 cents  
13, Edgar M. Martin, 400 White Rock, 9-6, Roy E Ream, 19¼ cents  
14 Eshelman Exp Farm, 1,800 Vantress, 9-2, Daniel K Good, 18½ cents  
15 Eshelman Exp. Farm, 3,600 Vantress, 9-2, Vicor F Weaver Inc, 18¾ cents

16 Eshelman Exp Farm, 3,600 Vantress, 9-2, Victor F Weaver Inc, 18¾ cents  
17 J Lloyd Hosler, 800 Vantress, 9-6, Walter C Mellinger, 19 cents  
18 Ray Bomberger, 800 Indian River White, 10-3, Daniel K Good, 19¼ cents  
19 Walter Weibley (Ernest Ober) 4,500 Vantress, 9-1, C F Manbeck Inc, 19½ cents  
20 Weibley (Ernest Ober), 4,300 Vantress, 9-1 Meaders Poultry, 19½ cents

21 D E Horn & Co (C F Kopp), 2,40 Indian River White, 9-6, College Hill, 19½ cents  
22 Horn & Co (C F Kopp), 2,400 Vantress cockerels, 9-6, College Hill, 19½ cents  
23 Miller & Bushong (J Floyd Kreider), 8,000 Vantress, 9, Victor F Weaver Inc, 18¾ cents  
24 M&B (John L Herr), 4,300 Vantress, 9-2, Meaders Poultry, 19¼ cents  
25 M&B (John L Herr), 4,300 Vantress, 9-2, College Hill, 19¼ cents

26 M&B (Arthur Spickler), 5,000 Indian River White, 9-2, College Hill, 19¼ cents  
27 J J Hess II (Warren Eshleman), 1,200 Vantress, 9-6, Walter C Mellinger, 20¼ cents  
28 Parke K Herr, 3,100 Vantress, 10-2, Daniel K Good, 19¼ cents  
29 Parke K Herr, 3,500 Vantress, 10-2, College Hill, 19 cents  
30 James Stoltzfus, 5,000 Vantress, 9, College Hill, 18 4 cents

31 Morgantown Feed (Charles Newlin), 4,800 Vantress, 9-6, College Hill, 18¼ cents  
32 Morgantown Feed (John U. Ghck), 1,600 Vantress, 9-2, no sale, 19 cents  
bid 33 Morgantown Feed (Irvan Nolt), 700 Vantress, 9, no sale, 18¼ cents  
bid 34, Morgantown Feed (John Zook), 1,000 Vantress 9, no sale, 18½ cents  
bid 35 Aberdeen Mills (Clarence Givins) 1,000 Vantress capettes, 13, Marvin Sweigart, 25¼ cents

36 James High (Emanuel Flaud), 2,700 Vantress, 9-2, College Hill, 18¾ cents  
37 Daniel Bucher, 3,300 White Rock cross, 10, College Hill, 19¼ cents  
38 Bruce Boyd, 1,000 Vantress, 10, Roy E Ream, 19 cents  
39 Ammon Lehman, 325 Vantress, 9-6, Daniel K Good, 19 cents  
40 John S Beiler, 300 Leghorn fowl, Carl B. Risser, 15¼ cents

41 Dietrich & Cabrill (Edgar Miller), 6,000 White Rock Cross capettes, 12, Harry H Weaver Jr 24½ cents  
42 Kreamer Feed Mill (George Callendar), 1,000 White Rock cockerel capettes, 12-5, Walter C Mellinger, 24 cents  
43 J J Hess II (Warren Eshleman), 800 Vantress, 9-6, Roy E Ream, 20¼ cents

## Slaughter Cattle Continue Decline; Hogs Slump at Lancaster Yards

Lancaster, Aug 6 — CATTLE Week to date 2,575. Receipts slightly larger than comparable time last week and supply mainly good to low-prime slaughter steers, with choice over 1,100 lb predominating. Slaughter heifers scarce. Stockers and feeders around 20 per cent of run and cows and bulls fully 15 per cent.

Large receipts at major market centers coupled with lower dressed beef prices more instrumental factors resulting in sharp price declines. Trading slow and slaughter steers weak to fully 50 cents, spots 75 cents lower. Most decline on choice and prime over 1,100 lb. Cows steady to 25 cents lower. Bulls steady. Stockers and feeders slow, steady to 25 cents lower.

Part load 1,220 lb prime steers \$26.50. Two loads 1,150 lb high-choice steers with prime end \$27.75. Choice steers bulked \$26.25-27.50, with few loads low-choice down to \$26. late. Good to low-choice steers \$25-26.25. Few standard steers \$23-24.50.

Small lot 685 lb average-choice heifers \$26. Few lots 800-900 lb standard and low-good heifers \$23-24. Utility and commercial cows \$18-21.50, canners and cutters \$15.50-20, few strongweight 1,100-1,400 lb cutters \$20.25-20.50. Good 800-1,100 lb fed yearling bulls \$25.50-27. Utility and commercial bulls \$22-25, few high-commercial \$25.50. Cutter bulls \$21-22.50.

Few lots 400-475 lb good and low-choice stock steer calves \$29.75-30. Few loads good and low-choice 800-975 lb feeder steers \$25-26.50. Few lots medium and good 500-700 lb stocker and feeder steers \$24-26, common and medium these weights \$20-24.

CALVES Receipts week to date 692. Vealers active, strong to \$1 higher, most advance on choice and prime. Good and choice vealers \$29-34, few prime \$25-36. Standard and low-good \$25-29, utility and standard \$20-25.

(Continued on page three)

**225 White Christie Hamps — 1 week old.**  
Call Your Order in Now For Fall Chicks.  
For Layers or Broilers — Leghorns or Heavies.  
Sexed or Straight Run—Vaccinated or Debeaked or Both.

Fine Chick Grain	\$5.05	Calf Feed	25 lb	\$1.50
B Starter NFZ	4.45		100 lb	5.15
B Grower	4.30	Fitting Ration		3.70
24% Super A Mash	4.35	16% Dairy		3.50
16% All Mash DP	3.95	15% Hog		3.80
Scratch DP	3.90	20% Hog, Pig & Sow		
Horse Feed	4.00	Feed		4.50

**Special Chop For Hogs, Steers, Heifers and Sheep on Pasture . \$3.20.**

**ALTMAN'S CASH FEED STORE**  
WILLIS H. WEAVER MANAGER  
947 Harrisburg Ave. Phone Lanc. EX 4-7715  
10c per hundred discount on half ton lots or more.  
PRICES SUBJECT TO CHANGE—WE DELIVER.

**Chicken Chatter**  
from GREIDER LEGHORN FARMS, Inc.



**You Soon Won't Be Able To Sell Your Eggs!!!**

That is, if you don't get on a "quality program". The time is very near when egg buyers will not take your eggs at any price if you don't have quality.

Here are four things you must do if you want to stay in the egg business:

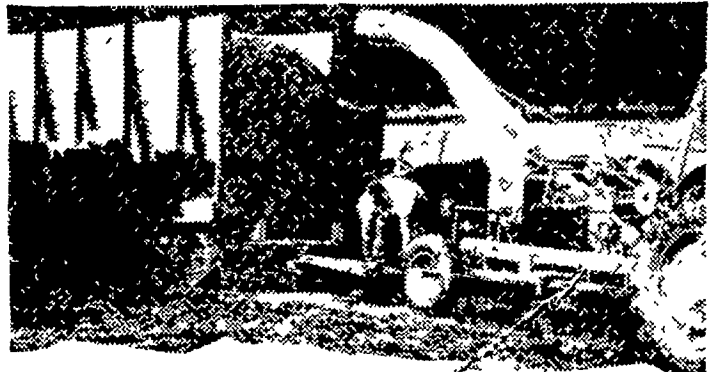
- 1 First of all, you must use an all-pullet flock each year. Research has shown that a second year layer just cannot lay the quality egg that she did when she was in her pullet year, regardless of breeding or management. Many large egg buying organizations on the west coast will not take eggs from a flock that has laid over 12 months. This may very well be the case in the east in the very near future.
- 2 You must keep your eggs in a cellar where temperatures never rise above 65° at any time and where a relative humidity of 75 or 80% can be maintained. If you do not have such a cellar you have no other alternative than to put in a cooler.
- 3 You must gather your eggs three times a day, even on days when you think you're too busy to do so.
- 4 You must use a strain of chickens with bred-in egg quality. You would be amazed at the difference between strains.

We have just received word from one of the largest egg marketing organizations in the state that eggs from Greider flocks were some of the highest quality they received. We have been told the same thing by other buyers. But don't take our word for it, ask them!

**Greider Leghorn Farms, Inc.**  
Phone OL 32455 Mt. Joy, R. 1, Pa.

**STOCKERS & FEEDERS**  
of all grades and weights  
**ON SALE DAILY**  
This is your **CENTRAL MARKET**  
to sell **CATTLE, CALVES, HOGS & SHEEP**

Contact your  
**COMMISSION FIRM**  
for good service at  
**THE UNION STOCK YARDS**  
Lancaster, Penna.



**"GREEN-CHOP" Feeding**  
lets you add 3 more cows  
...this forage harvester  
lets you lower your costs

The typical dairyman who changes to daily green-chop feeding can increase income \$400 to \$600 a year... here's how to cut chopping costs sharply:

- CUT FORAGE EVERY DAY WITH AN ALLIS-CHALMERS FORAGE HARVESTER
- ... Cut-and-throw chopping saves pasture. Cattle don't trample 40% of your feed
- ... Spiral-curved cylinder has 12 feet of cutting edge for extra capacity, fast work, using less power
- ... Knives are sharpened right in the machine... kept sharp minutes
- ... Handle every chopping job easier, and at worthwhile cost savings.

Stop in . let us show you how to cut costs, as well as chop forage.

**ALLIS CHALMERS**   
SALES AND SERVICE

LISTEN TO the National Farm and Home Hour, Saturdays, NBC

**Snavelys Farm Service**  
New Holland, Pa.

**L. H. Brubaker**  
Lancaster, Pa.

**Nissley Farm Service**  
Washington Boro, Pa.

**Mann & Grumelli Farm Serv.**  
Quarryville, Pa.

**R. S. Weaver**  
Stevens, Pa.

**N. G. Myers & Son**  
Rheems, Pa.

**L. H. Brubaker**  
Lititz, Pa.