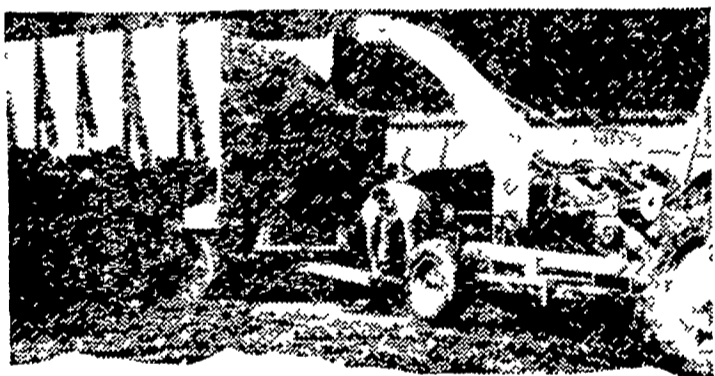




TOBACCO THIS YEAR looks extremely good and many fields that were planted early are showing bloom. A 100 mile tour of the County Monday showed that conditions are generally good with little variation in the quality of the crop. (LF Photo)



"GREEN-CHOP" Feeding
lets you add 3 more cows
...this forage harvester
lets you lower your costs

The typical dairyman who changes to daily green-chop feeding can increase income \$400 to \$600 a year... here's how to cut chopping costs sharply:

- CUT FORAGE EVERY DAY WITH AN ALLIS-CHALMERS FORAGE HARVESTER
- ...Cut-and-throw chopping saves pasture. Cattle often trample 40% of your feed.
- ...Spiral-curved cylinder has 12 feet of cutting edge for extra capacity, fast work, using less power.
- ...Knives are sharpened right in the machine... kept sharp in minutes
- ...Handle every chopping job easier, and at worth while cost savings.

Stop in... let us show you how to cut costs, as well as chop forage

ALLIS-CHALMERS 
SALES AND SERVICE

- | | |
|--|--|
| L. H. Brubaker
Lancaster, Pa. | Nissley Farm Service
Washington Boro, Pa. |
| Mann & Grumelli Farm Serv.
Quarryville, Pa. | R. S. Weaver
Stevens, Pa. |
| N. G. Myers & Son
Rheems, Pa. | L. H. Brubaker
Lititz, Pa. |
| Snavelys Farm Service
New Holland, Pa. | |

Heavy Demand Increase Commercial Exhibit Space at Plow Matches

HERSHEY — Heavy demands for commercial farm equipment exhibit space prompted officials to allocate a new major area for displays at the 16th National Plowing Contest and Conservation Exposition Aug. 21 and 22 at Hershey.

David G. Unger, secretary of the gigantic exposition, said latest reports showed 90 per cent of the original commercial exhibit space has been allocated.

In view of the continuing space demand, Unger explained, officials have begun to allocate space in a nearby major area that had been reserved for such an emergency. This will be adjacent to educational-conservation exhibits.

THE INITIAL EXHIBIT area covers 25 acres of meadowland of the Milton Hershey Farms, site of the event known as the "World Series of Agriculture." More than 2,300 acres of the 12,000-acre Milton Hershey Farms will be used for the plowing-conservation exposition.

"The new exhibit area is an excellent location and is close to what will be the center of activities," Unger added. "Reports received from farm machinery firms and other exhibitors indicate that outstanding displays will be presented by many companies."

DISPLAY AREAS still available include spaces for both large and small exhibits, Unger said.

He pointed out that utility services, including electricity and water, will be available to exhibitors. Ample parking space will be provided and the agricultural shop of the nearby Milton S. Hershey School will be available for

repairing equipment.

James Bobb, vice president of Hershey Estates and chairman of the exposition's local arrangements committee, said guards will be on duty in the floodlighted display area at night to prevent pilferage.

Bobb reminded individual exhibitors they must carry their own fire, theft and property insurance.

If you are Ready To Buy . . .

GOOD CHICKS

Pick up your phone and call

"Bill" Burling

at Oxford, (Pa.) 286 COLLECT

Bill will pay the call.

Consumers, including buyers for stores, institutions, etc., want the Best Meat and Eggs . . . no irregular lots of birds or mixed colors and mixed quality eggs.

The final result depends on what you start with, and we have the chicks that will make Premium-Price meat and eggs. Interior quality of eggs is "tops".

Started Pullets Now Ready

Carey White Leghorns, White Rocks, Cornish-Rock Cross, Merryknoll and Golden Sex-Links, New Hamps and Barred Rocks. Phone today for a date.

Burling's Hatchery Box F, Oxford, Pa.

IT'S IN THE FEED!
Can You Get It Out ?

The other day one of our customers brought us his records of his laying flock.

12 month operation (floor)
Four pounds feed used per dozen
eggs produced.

Good! Of course it is good. Some do better. Some not quite so good.

Breed

Management

Weather

And a lot of other factors are involved.

But

It's in our feed.

Let us help you get it out.

When you house your birds, use EARLY BIRD.



Miller & Bushong, Inc.

Rohrerstown, Pa.

Ph. Lancaster EX 2-2145

Manufacturers of Poultry and Live Stock Feed Since 1875.