

Growers Sell 169,370 Broilers At Lancaster Exchange Thursday

LANCASTER, July 10 — Broiler growers forgot about the high prices for the high weeks ago and started selling birds at the auction of the Lancaster Poultry Exchange today.

The biggest incentive for the selling spree — 169,370 head were sold — was the fact that the top price paid at the July 9 Eastern Shore Poultry Growers Exchange auction was 19.80 cents a pound. The price range at Lancaster was from 20 to 21 1/4 cents. The lowest bid offered was 19 1/2 cents which was declined by the growers.

The 169,370 head were sold in 36 lots. Five per cent of the sales were at 20 cents, 11 per cent at 20 1/4 cents, 18 per cent at 20 1/2 cents, 51 per cent at 20 3/4 cents, 11 per cent at 21 cents, one per cent at 21 1/4 cents, and three per cent at 21 3/4 cents. The average was 20.66 cents.

Also sold were 6,100 head of capettes for 24 to 26 1/2 cents, and 2,700 head of light hens for 16 1/4 to 17 cents. Unsold were 31,225 head of broilers in 11 lots and a 360 head lot of White Rock hens.

Here is the July 10 sale by lot number, seller with grower in parenthesis, number and breed, age in weeks and days, buyer and price per pound:

1. James High (B. Earl Forry), 5,000 Vantress, 9, H. W. Longacre Inc., 20 1/4 cents. 2. J. Robert Nusser, 3,600 Vantress, 9-6, College Hill, 20 1/2 cents. 3. Daniel G. Forry, 3,400 Vantress, 9, no sale, 20 1/2 cents bid. 4. Daniel G. Forry, 2,500 Vantress, 9, no sale, 20 1/4 cents bid. 5. Daniel G. Forry, 3,525 Vantress, 9, no sale, 20 1/4 cents bid. 6. Amos M. Shirk, 1,395 Vantress, 10-1, Walter B. Lehman, 21

7. Donald Shoemaker, 950 Leghorn Fowl, Victor J. Koser Co., 16 1/4 cents. 8. Aaron E. Beiler, 900 Vantress cockerel capettes, 12-2, Marvin Sweigart, 26 1/4 cents. 9. Menno S. Beiler, 800 Leghorn fowl, Victor J. Koser Co., 16 1/4 cents. 10. Elam S. Zook, 1,050 Donegal White Cross, 11-3, no sale, 20 1/2 cents bid.

11. G. Walter Jackson, 700 Leghorn fowl, Victor J. Koser Co., 16 1/4 cents. 12. Roy Edwards, 1,300 Vantress, 10-2, Walter C. Melling, 21 1/4 cents. 13. Elias Frey, 550 Vantress, 9-2, Carl B. Risser, 20 1/4 cents. 14. Harold Frey, 1,000 Vantress, 9, College Hill, 20 1/2 cents. 15. John B. Kurtz, 5,000 Vantress, 9, no sale, 20 cents bid.

16. Master Feed & Grain (Glenn Gockley), 3,500 Vantress, 9-3, H. W. Longacre Inc., 20 1/2 cents. 17. Graybill Miller, 4,500 White Mountains, 9-2, College Hill, 20 1/4 cents. 18. Graybill Miller, 5,000 Vantress, 9-2, College Hill, 20 1/4 cents. 19. Miller & Bushong (Alfred Fisher), 3,500 Vantress, 9-3, H. W. Longacre Inc., 20 1/2 cents. 20. M&B (Elmer M. Showalter), 8,500 Vantress, 9-3, Harry W. Weaver Jr., 20 1/4 cents.

21. M&B (John Olesh Jr.), 3,600 Vantress, 9-6, College Hill, 21 cents. 22. M&B (Christ M. Smith), 6,000 Indian River White, 9, Victor F. Weaver Inc., 20 1/2 cents. 23. M&B (Harold E. Rohrer), 5,700 Vantress, 9-6, Walter C. Melling, 21 cents. 24. M&B (Elmer Garber), 7,000 Vantress, 9-2, H. W. Longacre Inc., 20 1/4 cents. 25. M&B (John L. Herr), 250 Vantress capettes, 13, Harry H. Weaver Jr., 25 1/2 cents.

26. M&B (John L. Herr), 1,000 Vantress cockerel capettes, 13, Carl B. Risser, 26 cents. 27. M&B

(Walter S. Kinsey), 1,200 Vantress, 9-6, Daniel K. Good, 21 cents. 28. Brown Bros., 10,000 White Mountain and Vantress, 9, Harry H. Weaver Jr., 20 1/4 cents. 29. Brown Bros., 10,000 White Mountain and Vantress, 9, H. W. Longacre Inc., 20 1/4 cents. 30. Parke K. Herr, 825 Vantress and White Mountain cockerel capettes, 13-6, H. W. Longacre Inc., 26 1/2 cents.

31. Parke K. Herr, 950 Vantress cockerel capettes, 13-6, H. W. Longacre Inc., 26 1/2 cents. 32. Parke K. Herr, 825 Vantress cockerel capettes, 13-6, College Hill, 26 cents. 33. Cool Creek Farm, 3,200 Vantress, 9-3, no sale, 20 1/4 cents bid. 34. Cool Creek Farm, 3,200 Vantress, 9-3, no sale, 20 1/2 cents bid. 35. Cool Creek Farm, 3,500 Vantress, 9-3, no sale, 20 1/2 cents bid.

36. Cool Creek Farm, 3,600 Vantress, 9-3, no sale, 20 1/4 cents bid. 37. D. E. Horn & Co. (Murray Lehman), 5,500 Vantress, 9-2, Meaders Poultry, 20 1/2 cents. 38. Horn & Co. (Murray Lehman), 5,500 Vantress, 9-2, College Hill, 20 1/4 cents. 39. Horn & Co. (Murray Lehman), 4,000 Vantress, 9-2, Meaders Poultry, 20 1/4 cents. 40. Paul Newcomer, 2,300 White Mountain, 9-2, Daniel K. Good, 20 1/2 cents.

41. Jack Bucher, 8,800 Vantress, 9-2, Victor F. Weaver Inc., 20 cents. 42. Jack Bucher, 9,000 Vantress, 9-2, Victor F. Weaver Inc., 20 1/4 cents. 43. Jack Bucher, 1,400 Vantress, 9-2, Daniel K. Good, 20 1/2 cents. 44. Morgan town Feed & Grain (C. B. King), 4,750 Vantress, 8-6, College Hill, 20 1/2 cents. 45. Morgantown Feed (C. B. King), 4,750 Vantress, 8-6, College Hill, 20 1/2 cents.

46. Raymond M. Weaver, 8,000 Vantress cockerels, 8-6, College Hill, 20 1/2 cents. 47. Raymond M. Weaver, 8,000 Indian River White, 9-2, Harry H. Weaver Jr., 20 1/4 cents. 48. James Eshelman,

(Continued on page three)

Market Extremely Slow with Declines On Butchers, Stockers at Lancaster

By Arnold Johnson,
Acting in Charge,
Market News Branch

LANCASTER, July 16 — CATTLE Three days 3,100, compared to 2,039 last week. Extremely slow each day with noticeably fewer buyers and farmers about the yards since Monday. Compared with last Wednesday slaughter steers steady to 50 cents lower, mainly 25 cents up. Small supply slaughter heifers; about steady. Cows 75 cents to \$1.25 lower, mainly \$1. lower. Bulls since last Thursday's \$1 advance on Commercial and \$2 decline on canner to utility grades, now steady on Commercial and steady to 50 cents lower

on canner to utility grades, most decline on cutter and utility. Stockers and feeders Monday, steady to 75 cents lower, mainly 50 cents up, late steady.

Early two loads high choice to low prime 950-1,275 lb slaughter steers \$28.50 and \$29.75. Bulk choice 700-1,100 lb \$26.50-29, most good 900-1,100 lbs. early \$25.50-27.75, late down to \$25. Early standard \$24-25.25, late \$23.50-25. Few commercial \$22-23.50. Few good 700-900 lb. slaughter heifers \$25-27, some utility \$18-23. Commercial cows early \$21.50-22.50, utility \$19-21.50, canner and cutter \$16-21.50. Later commercial \$20.50-21.75, utility \$17.75-20.50, canner and cutter \$15-20.50, some light-

(Continued on page six)

STOCKERS & FEEDERS

of all grades and weights

ON SALE DAILY

This is your CENTRAL MARKET

to sell CATTLE, CALVES, HOGS & SHEEP

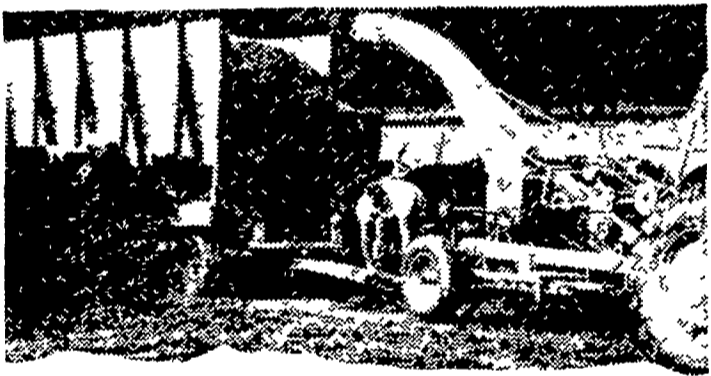
Contact your

COMMISSION FIRM

for good service at

THE UNION STOCK YARDS

Lancaster, Penna.



"GREEN-CHOP" Feeding

lets you add 3 more cows
...this forage harvester
lets you lower your costs

The typical dairyman who changes to daily green-chop feeding can increase income \$400 to \$600 a year... here's how to cut chopping costs sharply:

- CUT FORAGE EVERY DAY WITH AN ALLIS-CHALMERS FORAGE HARVESTER
- ... Cut-and-throw chopping saves pasture. Cattle often trample 40% of your feed
- ... Spiral curved cylinder has 12 feet of cutting edge for extra capacity, fast work, using less power.
- ... Knives are sharpened right in the machine... kept sharp in minutes.
- ... Handle every chopping job easier, and at worth-while cost savings

Stop in... let us show you how to cut costs, as well as chop forage

ALLIS-CHALMERS 
SALES AND SERVICE

N. G. Myers & Son
Rheems, Pa.

L. H. Brubaker
Lititz, Pa.

Mann & Grumelli Farm Serv.
Quarryville, Pa.

R. S. Weaver
Stevens, Pa.

Snavelys Farm Service
New Holland, Pa.

Nissley Farm Service
Washington Boro, Pa.

L. H. Brubaker
Lancaster, Pa.



Is Your Dairy Program Complete?

1. Do You Handle Your Roughage To The Best Advantage?
2. Do You Feed Your Cows On The Basis Of Their Capacity To Produce?
3. Do You Feed The Right Kind Of Grain Ration And The Correct Protein Level?
4. Do You Enjoy The ECONOMY OF BULK DELIVERY?

FOR HELPFUL SUGGESTIONS . . . ASK ANY MILLER & BUSHONG REPRESENTATIVE OR CALL LANCASTER EX 2-2145, COLLECT.



Miller & Bushong, Inc.

Rohrerstown, Pa.
Ph. Lancaster EX 2-2145

Manufacturers of Poultry and Live Stock Feed Since 1875.