

ROUGH & TUMBLE steam engineers will have a permanent home to come to this summer for their annual conclave at Kinzers. This new block building is to serve as a focal point of their activities and as a museum. Some equipment already has been moved to the new location on Highway 30 east of Kinzers (LF Photo)

Farm Calendar

July 7
New Holland Community 4H Club — 8 p.m. at New Holland Park Bldg
SPABC district meeting — Twilight meeting at the farm of Albert H. Fritz and Earl Harmish, R. 2, Quarryville. Speaker is Dexter Putman, Penn State

July 8
SPABC district meeting — Twilight meeting at the farm of Everett C. Cowan, R. 2, Parkesburg. Speaker is Dexter Putman, Penn State

4-H Dairy judging tryouts — 1 p.m. at the farm of John Paes, R. 1, Strasburg
4-H District vegetable judging practice — 9 a.m. at Farm Bureau Coop, Lancaster

July 9
Guernsey 4H Club — 9 p.m. at the home of Melvin Stoltzfus, R. 1, Honks

July 10
Lititz-Manheim 4H Club — 8 p.m. at the home of Glenn Herr

July 12
Keystone Stud Ram Sale—Farm Show Bldg., Harrisburg

Donegal 4-H Club Gives Progressive Party

The Donegal 4H Club held its second party June 23. It was a progressive party of five different countries. Included were Japan, Italy, Alaska, Africa and Hawaii.

At each country different refreshments and games carried out the mood set

Some Corn Is Knee High, But Weather Has Let Weeds Get Almost as Tall

According to an old saying corn will be "knee high by the Fourth of July" but wet weather has caused weeds to catch up readily and bother Pennsylvania farmers.

Wet weather prevailed over most of the State during the early part of the week ended Monday, according to Crop Reporting Service surveys. Favorable weather allowed farm activity to pick up at the end of the period in most areas. Temperatures averaged four degrees below normal. Rainfall averaged less than half an inch for the State and made the

week the driest since the third week of May.

HARVESTING OF BARLEY got underway in Southern and Central Pennsylvania counties near the end of the week and wheat and rye are turning color in those areas.

Pastures are growing rapidly that in some instances they are getting ahead of cattle grazing. Second cuttings of hay appear to be about two weeks away. While rains held up haymaking many farmers made grass silage as a means of harvesting their crop.

PLANTS OF TOMATOES showed blossom and fruit in southern areas by the end of the week. Peas for processing are moving in volume in central counties. Harvesting of snap beans for processing is expected to get underway following the holiday week end.

Picking of sweet cherries begins in earnest this week in Erie County but is nearly over in the Southeast where the red sour cherry harvest is expected to start before the Fourth. Strawberries are at their peak in Northern Tier counties but past peak in other sections. Peaches are attaining good size.

The parties were held at five different homes. Japan at the home of Carol Cupper, R. 1, Mt. Joy, Italy at Joanne Bixler's home, R. 1, Marietta; Alaska at the home of Dorothy Hitz, R. 2, Mt. Joy, Africa at Judy Gner's, Florin and Hawaii at the home of Helen Musser, R. 2, Mt. Joy.

The next meeting will be held at 7 p.m. July 7.

Which feeding program is BEST for you?



- ☆ The most profitable program for your farm will vary with your equipment, labor, size and type of operation. That's why Beacon programs are versatile... *adaptable to the needs of individual farms.*
- ☆ That's also why we have on call a *Beacon Advisor*. This farm service specialist has the knowledge and experience to help poultrymen and dairymen control costs, earn greater profits. His job is to help each Beacon feeder choose the best feeding program and *get out of his feed all the nutrition that's built into it.*
- ☆ When special problems arise, the Beacon Advisor's backing by specialists in the fields of dairy and poultry nutrition and management is of *extra benefit to our customers.* These specialists are no "ivory tower" planners but farm reared men whose day to day work takes them to thousands of farms in the course of each year. The benefits of their knowledge, training and experience is yours when you buy Beacon.

We'd like to have our Beacon Advisor visit your farm. Then, you be the judge as to what Beacon Feeds and Beacon service can mean to your profits.

Beacon Dealers and Beacon Advisors are located throughout Lancaster County. For the name of the one nearest to you please phone or write:

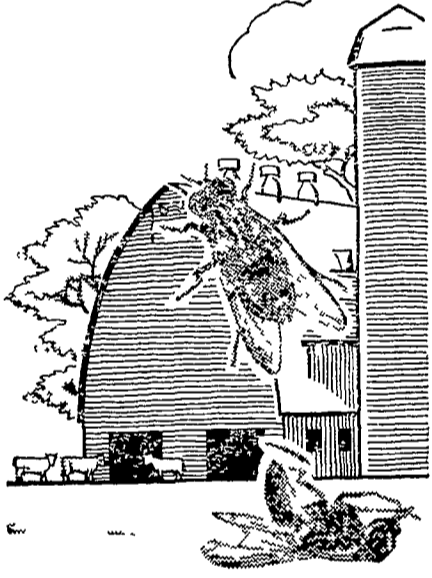
The Beacon Milling Company
Philadelphia and Carlisle Sts., York, Pa.
Telephone: York 8-2341.

BEACON

NOW!

KILL FLIES AND SAVE BY USING...

- **Dow Korlan**
Gives Fly Control from four to six weeks
- **Geigy Diazinon**
Gives Fly Control in barns from four to six weeks
- **Dipterex Bayer (L13/59)**
Is a fine blue powder use it as a bait, on barn floors
- **DuPont Marlate 50**
Rub Marlate on the back of cows. 1 handful per animal
- **Ehrlich's Livestock Spray R-11**
wet hairs on animals once daily
- **Ortho Fly Killer Dry Bait**
Just scatter thinly by hand on floors.



Get Your Supply at these Dealers

- | | | |
|---|--|---|
| Blue Ball Jacob B. Zimmerman | Gap Summer Bros., Hardware | Peach Bottom C. E. Wiley & Son |
| Bareville Martin's Hardware | Intercourse Charles B. Hooper | Quarryville Conestoga Farm Service R. D. #2 Musser's Mill, R. D. #1 Ross H. Rohrer & Sons |
| Denver Denver Supply Co. Paul H. Gehman Allen A. Matz | Kirkwood L. H. Jackson Myer's Store | Ronks Lester A. Singer |
| Elizabethtown Farmers Supply, Inc. Kaylor Bros., R. D. #1 | Lancaster Lancaster County Farm Bureau | Schoeneck Brehm & Enck |
| Ephrata Farmersville Equipment Co. R. D. #2 Martin's Feed Mill, R. D. #3 C. P. Wenger & Sons | Lincoln J. E. Galen, Hardware | Stevens Snader's Mill, Mt. Airy |
| Florin Hess Bros., Mumma's Hardware | Lititz Eby's Mill, Inc. | Strasburg Homsher's Mill |
| | Manheim Cassel's Mill, Inc., R. D. #1 N. G. Hershey & Son | Washington Boro Ament's Hardware, |
| | Millersville Millersville Supply Co. | West Willow West Willow Farmers Assn., Inc. |
| | Mountville Kauffman Bros., | Willow Street Dombach Bros. |

J. C. EHRLICH CO.
Distributor

736 - 38 E. Chestnut St., Lancaster, Ph. EX 3-2210 or 3-2489