

Progress Reports Show Plow Contest To Be Largest Outdoor Ag Event

HERSHEY, Pa. (SPECIAL)—Progress reports showed today the 16th National Plowing Contest and Conservation Exposition to be held here August 21 and 22 will be the biggest outdoor agricultural event in Pennsylvania history.

Leland H. Bull, Pennsylvania Deputy Secretary of Agriculture and general chairman of the

mammoth exposition, said planning is progressing as scheduled and that "everything indicates this will be the nation's foremost outdoor agricultural observance this year."

Actually, Bull explained, the exposition, termed the "World Series of Agriculture" will be part of a six day schedule of events including a colorful folk festival, farm machinery display, sheep dog championships, hay show and beauty contest.

But he quickly stressed the fact that displays and demonstrations of soil, water and wildlife conservation will hold the center of the stage. Work started in April on the first of three farm ponds. During the exposition two more ponds and a score of conservation practices will be under construction with the most modern machines available.

More than 2,300 acres of the 10,000-acre Milton Hershey Farms will be used for the celebration which begins August 19 with the Pennsylvania State Plowing Contest County champions will compete for State level land and contour plowing titles, and entry in the national event. The rain date is August 20.

Another highlight of the six-day program will be "Pennsylvania Dutch Days," a gay folk festival that annually attracts many thousands of persons from all parts of the nation. This celebration, from Thursday, August 21 through Sunday, August 24, emphasizes the traditions and crafts of pioneer German farmers who settled in Pennsylvania areas now commonly called "the Dutch Country" in which the town of Hershey (population 5,300) is located.

The exposition is the first of its type held East of Ohio and on a single farming operation anywhere. The site is 14 miles East of Harrisburg and adjacent to the Pennsylvania Turnpike.

Opening day of the national plowing championships will be dedicated to "Pennsylvania Agriculture" Governor George M. Leader, the first farmer to become chief executive of the Keystone State in nearly 150 years will tour the exhibit and demonstration areas, address a stadium and attend a plowmen's banquet. On August 22 tribute



JOHN H. HAUCK, Tunkhannock, has joined the field staff of Bowman-Martin development breeding farms. He will devote most of his efforts to organizing added breeding flocks. He formerly was owner-operator of North Star Hatchery.

Butchers Fully Steady, Active At Chicago

CHICAGO, June 30 — CATTLE 19,000 Receipts will exceed the estimate by around 500 head. Slaughtered steers and heifers mostly steady, heifers along with steers weighing around 1,100 lbs. down fairly active, spots strong on 900-1,100 lb steers, some slowness on steers over 1,200 lbs. Other classes moderately active, steady to strong. F.c.w. loads prime 1,150-1,325 lb slaughter steers \$31-31.50, high-choice and mixed choice and prime steers \$28.75-30.50, mostly \$29.30, several loads mostly prime 1,075-1,125 lb weights \$30-30.50, bulk average choice steers all weights \$28-28.50, good to low-choice \$25.50-27.75, several loads steers in the price range of \$27.75-31.50, feedlot mates of cattle that brought the same prices last Wednesday, load high-choice 1,250 lb weights at \$29 feedlot mates of \$28.50 steers last Monday, few loads utility and standard steers \$22.50-23.00, load mostly utility 1,050 lb Holsteins included at \$23.50. Some mixed choice and prime heifers \$28.25, most good and choice, \$25.28, utility and standard \$20-24. Few standard cows \$22-23.50, utility and commercial \$19-22. Few utility Holsteins as high as \$21.50 and some commercial beef bred cows down to \$20.50, canners and cutters \$16-19.75, utility and commercial bulls \$23.50-25, cutters \$21.50-23. Most good and choice vealers \$28-31. Utility and standard \$19-28, culls down to \$12.

Load good and choice 726 lb yearling stock steers \$27.50, stockers and feeders in the smallest supply for any Monday market in some time. HOGS 6,500. Fairly active, uneven, mostly 25 cents higher on both butchers and sows. Instances up more both classes. All interests in trade and early clearance. No 1 lots butchers very scarce, particularly weights below 230 lbs. U.S. No 2 and 3, 190-230 lbs \$24.25-24.50, around 300 head at \$24.50. No 2 and 3, 250-270 lbs \$23.50-24. Limited volume No 2 and 3, 270-290 lbs \$23-23.50, few lots No 3 up to 310 lbs down to \$22.50 and lot No 3, 330 lbs \$22. Larger lots mixed grades 400-500 lbs sows \$19.25-20.25, 325-375 lbs \$20.50-21.50, few down to 300 lbs to \$22 and most 500-550 lbs \$18.50-19.25.

will be paid to the nation's agriculture. Invitations have been extended to President Eisenhower — whose Gettysburg farm is but 50 miles from Hershey — and to U. S. Secretary of Agriculture Ezra Taft Benson.

The schedule of events includes the 5th annual Supreme Championship Trials of the American Sheep Dog Society, plowmen's banquet, hay show, livestock show and the Pennsylvania Poultry Federation's annual Poultry Festival and queen contest finals.

Several hundred Flying Farmers from all parts of the United States and Canada are expected to use the facilities of the Hershey Air Park which has reserved an area large enough to park 400 planes. Airplane tours to outstanding farm areas nearby will be offered at low cost.

Import events will be held in a concentrated area centering on a football stadium seating 15,000 persons. The plow areas will be a short distance from the stadium.

Hostess for the exposition will be a Pennsylvania farm girl who will be selected on August 15 as National "Queen of the Furrow."

Large displays by farm machinery and equipment manufacturers and dealers and conservation agencies will be housed in a 25-acre tent city to be erected in the center of activities.

Thousands of persons will be transported on tractor-pulled flat-bed farm wagons to the various conservation demonstrations. 80 tractors will be used to pull 160 rubber-tired farm wagons over a 2-mile sight-seeing route,

Adequate Accommodations for Flying Farmers at Plowing Matches

Members of the National Flying Farmers organization and private pilots were assured today adequate accommodations will be available at the 16th National Plowing Contest and Conservation Exposition Aug 21 and 22 at nearby Hershey. Included in plans is a 14-acre parking area for 400 airplanes.

Leland H. Bull, Pennsylvania Deputy Secretary of Agriculture and general chairman of the celebration, said the exposition's aviation committee has mapped out plans to insure the safe operation of aircraft during the event which will spread over 2,300 acres of the 12,000-acre Milton Hershey Farms.

John W. MacFarlane, executive director of the Pennsylvania Aeronautics Commission, is acting chairman of the committee which includes veteran private pilots, representatives of the Pennsylvania Flying Farmers Association, Civil Air Patrol and agencies of the Civil Aeronautics Administration.

COMMITTEE MEMBERS have scouted the terrain and facilities of the Hershey Air Park located close to the stadium area that will be the hub of activities next August, MacFarlane explained.

He added the committee has stressed that proper air safety regulations and controls would be in effect during the plowing event expressed to attract thousands of visitors from all parts of the nation. Air traffic control, communications, weather information and first aid facilities have been studied by the group.

Hershey's 2,500-foot airstrip is seeded in heavy grass and will permit landing and take-off by planes under DC-3 size.

SIGHT-SEEING AIR tours over soil conservation areas in nearby counties are planned. The committee is considering the possibility of establishing a heliport for use in the transportation of officials and important guests to

and from key points. Bus service will be maintained between the Harrisburg State Airport and Hershey.

Bull said International Harvester Company will serve as host to all Flying Farmers attending the exposition, largest outdoor agricultural event ever held in the state.

Each of the 5,000 members of the National Flying Farmers organization in the United States and Canada will be invited by International Harvester to attend the celebration which is being held east of Ohio for the first time.

Conservation of soil, water, forests and wildlife will be stressed throughout the celebration which is part of a six-day schedule of events including the annual Pennsylvania Dutch Days.



KimberCHIKS LAY
WELL IN VARIED ENVIRONMENTS

Rank of nationally sold chicks in 1956-57 tests

(Based on income over feed cost except in N. Y., C. and Missouri.)

Rating Cal., Mo., N.Y., C. and Miss. "B" # 2

Strain	4	4	6	5	2	4.2
Kimber K-137	4	4	6	5	2	4.2
Strain A	3	10	-	10	1	6.0
Strain B	11	16	2	3.5†	4	7.3
Strain C	5	18	18	12	5	11.6
Strain D	-	6	24	-	10	13.3
Strain E	38	3	25	15	3	16.8
Strain F	23	20	-	7	18	17.0
Strain G	-	25	27	11	13	19.0

*Incomplete. †Average of 2 entries.

‡Income over feed and chick costs.

K-137 entries ranked FIRST IN NET INCOME among all nationally sold chicks entered in three or more of the above tests. The average net income from Kimberchiks was 56¢ higher than the average of all entries. Such consistent, profitable performance in a wide variety of environments should encourage you to order K-137 Kimberchiks this season.

Longenecker's Hatchery

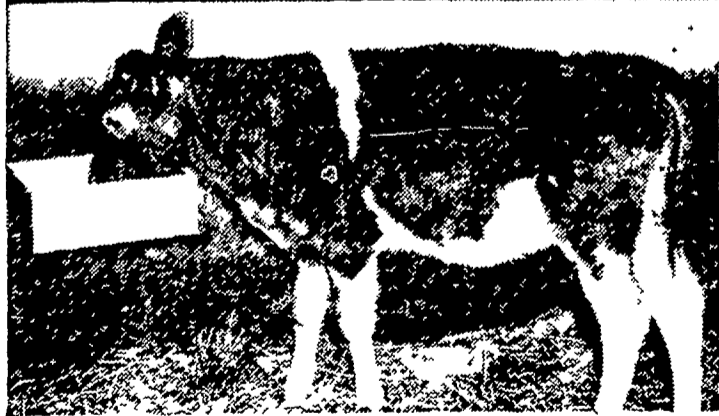
1110 South Market St.
Elizabethtown, Pa.

MASTER MIX

Complete CALF-MIX

MOLASSES COATED • COARSE TEXTURED

The way calves like it!



Master Mix Complete Calf Mix contains Master Mix Calf Mixer Pellets, high quality corn, and crimped oats. It grows thrifty, strong calves with an extra special bloom.



L. J. Denlinger Co.
Paradise

Shanaman, Inc.
Honey Brook

Eby's Mill, Inc.
Lititz

Hempfield Mills, Inc.
East Petersburg

Home Improvements

Storm Doors, Windows, Jalousies, Awnings, Roofings, Siding, Carpentry, Roof Coating

Authorized Ruberoid Applicator

Ralph F. Kline

405 S. Broad St.

LITITZ, PA.

Phone MA 6-7474

20 years experience in Home Improvement field

Our experience is your safeguard. Why take chances?

CUSTOM BULK SPREADING



Dealers in

Davco Granulated Fertilizer

● Super Gro ● Rock Phosphate ● Green Sand

BAGS OR BULK.

Apply Fertilizer Now For Later Hay Crops

Prompt and Reliable Service For your Fertilizer Needs Call

SMUCKER BROS.

BIRD-IN-HAND, PA.

Ph. Intercourse SO 8-3610