

Wednesday New York Egg Market

Copyrighted 1958 By Urner-Barry Co.

CYCOLOGYSEZ



WHAT'S NEEDED IS A
CORRESPONDENCE COURSE
ON HOW TO CONDUCT
A CONVERSATION WITH
A TRAFFIC COP!

You'll always find us
courteous as well as
efficient.

USED SPECIALS!

- Massey Harris
- P. T. O. 7-ft. Combine
- I. H. 62 Combine
with engine
- Used 76 Combine
P. T. O.
- Grain Tank

Cope & Weaver

WILLOW ST.
Ph. Lanc. EX 3-2824

Nearby Whites		
Extra Fancy Heavyweights	40	-41
Mediums	35½	
Pullets	26	-26½
Peeweese	21	
Nearby Browns		
Extra Fancy Heavyweights	45	
Mediums	36½	
Pullets	28½	
Peeweese	21	
Midwestern Mixed		
Fancy Heavyweights	38½	
Mediums	33½	
Standards	37	
Checks	33½-34	
Midwestern Whites		
Fancy Heavyweights	39	
Mediums	35½	
Pullets	26	-26½
Midwestern Browns		
Fancy Heavyweights	43½	

NEW YORK, June 25 — Top nearby whites still a bit dull, but browns are firm and mediums still closely cleared. A shortage in New England is maintaining a wider than usual spread between nearby whites and browns

Weekly Egg Price Review

NEARBY WHITE	June 19	June 20	June 23	June 24
Ex Fcy Hywts	41	41	41	40 -41
Mediums	32½-33	34	35	35½
Pullets	27½	27 -27½	27½	26 -26½
Peeweese	21	21	21	21
NEARBY BROWNS				
Ex Fcy Hywts	43	45	45	45
Mediums	36½	36½	36½	36½
Pullets	29½	29½	29½	28½
Peeweese	21	21	21	21

PROCESSED POULTRY

PHILADELPHIA, June 25 — Ready to cook ice packed broilers and fryers — about steady. Demand was good Offerings were adequate for current requirements
- Prices paid delivered warehouse, Philadelphia (cents per lb.) Grade A and U.S. grade A, 2-3 lb. 34½-35½, mostly 34½-35
Hens Ready to cook, about

steady Large heavy type were in very good demand with supplies about sufficient.

Prices paid delivered warehouse, Philadelphia (cents per lb.) Grade A and U.S. grade A 4-5½ lb 38-39

Receipts June 24 — 234,000 lbs other than turkeys: Maryland, 77,000 lb; Delaware, 77,000 lb; Virginia, 25,000 lb; North Carolina, 34,000 lb.

General Softness in Broiler Demand Seen Early in Week in Major Areas

PHILADELPHIA, June 24 — A slight easing of demand was seen at the beginning of the week in the major broiler producing areas. Most trading in the Delmarva area was at prices to be determined after the weekly auction at the Eastern Shore Poultry Growers Exchange.

The broiler-feed ratio last week remained steady with the week before, although both broiler prices and feed prices rose appreciably. Feed gained from \$100.96 a ton to \$102.36 a ton. Broiler prices rose from 21.62 cents a pound to 22.10 cents a pound.

PHILADELPHIA EGGS

PHILADELPHIA, June 25 — About steady Increased offerings of large sizes were fully adequate for the fair demand Relatively lighter supplies of mediums were readily absorbed

Prices to retailers in cartons (cents per dozen) Grade A and U.S. grade A large white 51-55, mostly 53-54, brown 51-55, mostly 53-54 Grade A and U.S. grade A medium white 42-47, mostly 43-45; brown 42-47, mostly 43-45 Grade A and U.S. grade small white 35-39, mostly 35-37, brown 35-39 mostly 35-37

Grade B and U.S. grade B large white 44-51, mostly 44-45, brown 44-51, mostly 44-45

Received June 24 — 6,500 cases by truck.

The ratio at 4:3 is the same as a year ago

Here is how the broiler market looked in the major producing areas on Tuesday.

DELMARVA: Market quiet Trading very light and mostly based on prices to be determined later Prices quoted were 22½ cents for 38 per cent of 143,000 head sold

GEORGIA Supply and demand generally well balanced for a good demand Sizes smaller than desired continued to be a factor in some instances Buyers offering prices were 20 cents at the farm and 21 cents at the plant In Monday's trade the price range was from 20 to 20½ cents for 918,857 head Only eight per cent of the sales were at the top

NORTH CAROLINA Offerings adequate, demand good Prices paid were 20 and 20½ cents at the farm Of 576,000 head sold, 97 per cent were at 20 cents, the rest at 20½

SHENANDOAH VALLEY Demand only fair Supplies adequate Prices were from 20 to 21½ cents With 181,000 head being sold, 12 per cent of the sales were at 20 cents, 15 per cent at 21 cents, 11 per cent at 21½ cents, seven per cent at 21½ cents The rest of the prices were undetermined.

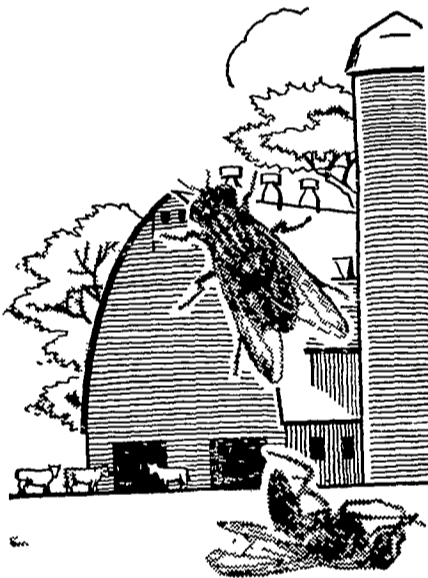
ARKANSAS Demand good at most points, lighter at some Offerings generally adequate with some points, short on over three pound weights Prices at the farm were 20½ and 21 cents Sixty per cent of the sales were at the top price, 27 per cent undetermined, with 522,400 head being sold

ALABAMA Offerings and supplies generally in balance with good demand Some intraplant movement to fill needs Farm prices were 20 cents, plant prices 21 cents, with 11 per cent of the sales at undetermined prices Some 433,000 head were sold

NOW!

KILL PESKY, PROFIT ROBBING FLIES WITH...

- **Dow Korlan**
Gives Fly Control from four to six weeks
- **Geigy Diazinon**
Gives Fly Control in barns from four to six weeks
- **Dipterex Bayer (L13/59)**
Is a fine blue powder use it as a bait, on barn floors
- **DuPoni Marlate 50**
Rub Marlate on the back of cows. 1 handful per animal



- **Ehrlich's Livestock Spray R-11**
wet hairs on animals once daily
- **Ortho Fly Killer Dry Bait**
Just scatter thinly by hand on floors.

Babcock's

Healthy Chicks Make Great Layers!

Keep The Eggs From Your Various Flocks Separate



Monroe C. Babcock

Today many of our customers are being paid on a graded out basis for their eggs. Some of the reports that we are getting on the percentage of "A" 's and "AA" 's being laid by Babcock Bessies are fantastically high. Some of them are almost beyond belief.

We do find that many of our customers are putting eggs from several different ages of layers all in together. Also we find some poultrymen experimenting with other birds in competition with Bessies, and are packing all of these eggs in together in the same cases

If you have a flock of birds that has been laying 2 to 3 months, and if you are being paid on a graded basis, I would suggest that you keep these eggs separate from a flock that has been laying 8 to 10 months. In this way you can mark your cases and tell your buyer that you are keeping your various eggs separate so that he can pay you the highest return, and also he can get the best possible pack for his customers.

You will also find a tremendous variation in the quality of eggs that different strains lay. We are eager that all of our customers and future customers keep the Bessie eggs separate from eggs laid by other birds. It is only in this way that you can keep accurate records on the quality eggs being laid by various birds on your farm.

We would like to have you stop at Babcock Poultry Farm and look at our eggs going over the graders. And we hope that you can stop when we are breaking out eggs and judging their interior quality and their freedom from bloodspots.

Please send for our free catalog and literature on our birds. P.S. You may find it too much work to keep all eggs separate. But I feel that it is important to make a check about once a month on the difference in egg quality between different strains and different ages of birds.

BABCOCK HATCHERY

Lancaster County Branch

Route 3 F, Lititz, Pa. Phone MADison 6-5872

Russell Mease
Route 4
Manheim, Pa.
Phone MO-5-4705

Bob Decker
R. D. #1
Milford, New Jersey
Phone Milford 4-4909

Get Your Supply at these Dealers

Blue Ball Jacob B. Zimmerman	Gap Summer Bros., Hardware	Peach Bottom C. E. Wiley & Son
Bareville Martin's Hardware	Intercourse Charles B. Hooper	Quarryville Conestoga Farm Service R. D. #2
Denver Denver Supply Co. Paul H. Gehman Allen A. Matz	Kirkwood L. H. Jackson Myer's Store	Ross H. Rohrer & Sons
Elizabethtown Farmers Supply, Inc Kaylor Bros., R. D. #1	Lancaster Lancaster County Farm Bureau	Ronks Lester A. Singer
Ephrata Farmersville Equipment Co. R. D. #2 Martin's Feed Mill, R. D. #3 C. P. Wenger & Sons	Lincoln J. E. Galen, Hardware	Schoeneck Brehm & Enck
Florin Hess Bros., Mumma's Hardware	Lititz Eby's Mill, Inc	Stevens Snader's Mill, Mt. Airy
	Manheim Cassel's Mill, Inc., R. D. #1 N. G. Hershey & Son	Strasburg Homsher's Mill
	Millersville Millersville Supply Co.	Washington Boro Ament's Hardware,
	Mountville Kauffman Bros.,	West Willow West Willow Farmers Assn., Inc.
		Willow Street Dombach Bros.

J. C. EHRLICH CO.

Distributor

736 - 38 E. Chestnut St., Lancaster, Ph. EX 3-2210 or 3-2489