

## Good Demand Raises Broiler Price At Lancaster Exchange Thursday

LANCASTER, May 29 — A good demand for broilers and capettes gave the weekly poultry auction at the Lancaster Poultry Exchange an average of 22 7/8 cents for broilers and a range of from 26 to 27 cents for capettes.



FOR MORE EGG PROFITS



We can prove that H&N Balanced Breeding will increase your egg production. Get more income from your laying house start with H&N "Nick Chicks" today.

Write for FREE price list and illustrated literature. Also 1st Generation White Vantress broiler chicks.

**Florin Farms**

FLORIN FARMS, INC.  
Mt. Joy 2 — Lancaster County — Pa.  
Phone: Mt. Joy Oldfield 3-9891

Offerings were down somewhat with only 81,975 birds being offered and 65,525 head being sold.

Sold were 14 lots, 57,025 head, of broilers at a range of from 22 1/4 to 23 3/4 cents. Twenty-one per cent of the sales were at 22 1/4 cents, 49 per cent at 22 3/4 cents, eight per cent at 23 cents, five per cent at 23 1/4 cents; five per cent at 23 1/2 cents, and 12 per cent at 23 3/4 cents.

Five lots, 6,000 head, of capettes sold from 26 to 27 cents and two lots of light hens sold for 17 1/4 and 17 3/4 cents.

Unsold were two lots, 15,600 head, of capettes and 850 head of broilers.

Here is the May 29 sale by lot number, seller with grower in parenthesis, number and breed, age in weeks and days, buyer and price per pound.

1 Henry Eshleman, 500 yearling Leghorn fowl, Victor J Koser Co., 17 1/4 cents. 2 Mary E Forry, 850 White Vantress, 9 6, John E Rettinger, 23 1/2 cents. 3 James Noll, 1,000 White Vantress, 9-6, John N Thomas, 23 cents. 4 Jacob N Eshelman, 12,000 White Vantress, 9, College Hill, 22 1/4 cents. 5 John B Kurtz (Edwin G Martin), 2,000 White Vantress, 9 6, D K Good, 23 1/4 cents.

6 Sam Z Musselman, 3,600 White Vantress, 10-2, Roy E Ream, 23 cents. 7 Stephen Note

stine, 7,600 White Vantress, 9-6 S E Davis, 22 3/4 cents. 8 Miller & Bushong (Glenn Deardorff), 3,200 White Vantress, 10, Daniel K Good, 23 3/4 cents. 9 M&B (Richard Thompson), 10,000 White Vantress, 10, College Hill, 22 1/4 cents. 10 M&B (Harry F Hess), 3,900 Indian River White, 10-2, College Hill, 22 3/4 cents.

11 M&B (Harry F. Hess), 7,900 Indian River White, 10-2, no sale, 22 cents bid. 12 M&B (Willis Glick Jr), 475 White Vantress, 9-2, Martin M Brendle, 23 1/2 cents. 13 William K Burkholder, 3,000 White Vantress, 9 4, College Hill, 22 3/4 cents. 14 Elvin Blecher, 1,000 White Vantress cockerel capettes, 13-2, C. F. Manbeck Inc., 26 1/4 cents. 15 Elvin Blecher, 1,000 White Vantress cockerel capettes, 13-2, Walter C Mellinger, 26 3/4 cents.

16 Elvin Blecher, 1,000 White Vantress cockerel capettes, 13 2, College Hill, 27 cents. 17 Elvin Blecher, 1,000 White Vantress cockerel capettes, 13 2, Walter C Mellinger, 27 cents. 18 Neff Bros., 1,300 Indian River White, 9-2, Carl B Risser, 23 1/2 cents. 19 Reid Wissler, 900 White Vantress 9-5, Marvin Sweigart, 23 1/4 cents. 20 George Weaver, 1,500 Leghorn yearling fowl, Victor J Koser Co., 17 3/4 cents.

21 James High (Samuel Stoltzfus), 850 White Vantress, 10-2, no sale, 22 3/4 cents bid. 22 Stephen Notestine, 7,700 White Vantress, 9-6, Meader's Poultry, 22 3/4 cents. 23 Stephen Notestine, 7,700 White Vantress, 9 6, no sale, 22 3/4 cents bid. 24 Elvin Blecher, 2,000 White Vantress pullet capettes, 13 2, Walter C Mellinger 26 cents.

## Butchers Decline, Stockers Steady; Hogs Weaken at Lancaster Stockyards

CATTLE Three days 2,962, week ago 2,563. Supply consisted of around 40 loads fed steers about 50 per cent stockers and feeders, the balance cows and bulls. Slaughter steers and heifers mostly 50 cents lower than previous Wednesday, cows fully steady with demand exceeding supply on canners and low-cutters. Bulls were steady early in week, but on Wednesday declines measuring 25 to 50 cents were registered. Stockers and feeders were steady.

Choice fed steers 950-1,250 lbs \$27-29 75, largely \$27 75-29. Loads and lots high-choice with some prime 1,100-1,220 lbs \$30-32, later price for part load mostly prime 1,185 lb weights. Bulk good steers \$26-27 50, standard \$25-26. Standard to choice slaughter heifers \$23-27 75. Bulk cutter and utility cows \$17 50-22 50, commercial to \$23, few standard to \$23 50. Canners and low-cutters \$15 50-17 25, with shelly canners down to \$15. Early sales utility and commercial bulls \$23 26 50, few heavy utility to \$27 50, late bulk sales \$22 75-26. Good fed yearling bulls \$27-28.

Common and medium stock steers \$22-26. Medium and good 550-950 lb feeding steers \$26 50-

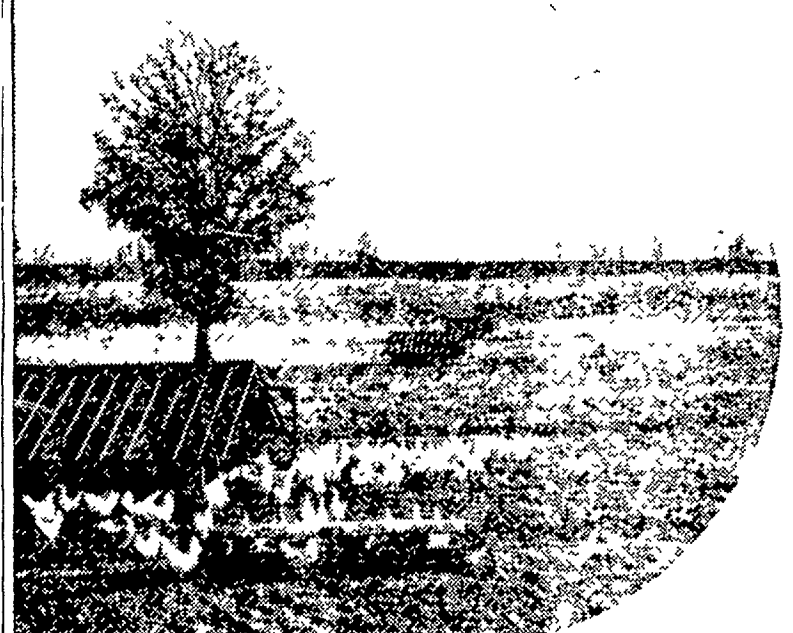
\$29 50. Several loads good 885-1,053 lb two-way steers returned for further feeding at \$27-28 45. Several loads good and choice 540-700 lb feeders \$33-33 25, part load mostly choice Western feeders 558 lbs \$35 25. Good stock bulls \$23-24 50.

CALVES 709 last week 769. Demand only fair and prices about steady with previous Wednesday. However late in period a weak undertone developed. Good and choice 140-200 lb vealers \$30-33, high choice \$34 35, with prime up to \$36 early in week. Standard vealers \$28-30, utility down to \$20.

HOGS 1,527, week ago 1,497. Barrows and gilts steady to weak with sows steady. US No 1, 2, and 3, 190-230 lb barrows and gilts \$23 75-24 50, late mostly \$23 75-24 25. Scattered lots No 1 and 2, 200-220 lbs \$24 50-24 75, with about 80 head for the week. No 1, at \$25. No 2 and 3, 240-260 lbs \$23-23 50, few No 3, around 240 lbs late at \$22 85. Sows No 1 to 3, 300-550 lbs \$16-19, some under 300 lbs \$19 50-20.

SHEEP 377 week ago 365. Supply largely native spring lambs with too few other classes for market test. Good and choice spring lambs 70-90 lbs \$24-26, utility down to \$22.

## THIS YEAR grow pullets with Stamina



Pullets that really *pay their way* are those that produce at a high level month after month . . . not for just a few weeks after they are housed. That's why all parts of the Beacon program . . . starting, growing and laying . . . are designed to produce *pullets with stamina*.

Much of this is accomplished in the important period from six weeks until housing. During this time nutrients are needed to develop fully feathered, strong boned, big framed birds . . . *with the digestive capacity for efficient conversion of feed into eggs*. Beacon Growing rations provide these needed nutrients and are also specially formulated for the breed and type (i.e., high speed or meat strain) of bird to which they are to be fed.

We've a Beacon Advisor on call to help you plan, set up and administer the *most profitable feeding program* for your flock, equipment and available labor. We think his specialized training and experience can help you make more money. We'd be glad to have him visit your farm.

Beacon Dealers and Beacon Advisors are located throughout Lancaster County. For the name of the one nearest to you please phone or write:

The Beacon Milling Company  
Philadelphia and Carlisle Sts., York, Pa.  
Telephone: York 8-2341.

# BEACON

For bigger yields on  
**TOMATOES and TOBACCO**

add

**Ortho-Gro Liquid Fertilizer**



and

**Isotox Transplanter Solution**

to your transplant water.

ORTHO - GRO is a 10-5-5 all organic fertilizer — giving your plants a quick boost — protecting them against the shock of transplanting.



ISOTOX TRANSPLANTER SOLUTION contains LINDANE, kills wireworms and other soil insects, saves the trouble of resetting because of insect damage, mixes readily with water & is the cheapest, protection against insects damaging young, tender roots.

GET ORTHO - GRO FERTILIZERS and ISOTOX TRANSPLANTER SOLUTION AT THESE DEALERS:

**Denver**  
Denver Supply Co  
Allen Matz

**Elizabethtown**  
Kaylor Bros R D #1  
Farmers Supply Co  
Brown St

**Farmersville**  
Farmersville  
Equipment Co

**Florin**  
Hess Bros  
S Market St

**Gap**  
Summets Hardware

**Intercourse**  
Charles B Hoode

**Knokwood**  
Mills Store

**Lancaster**  
Lancaster County  
Farm Bureau

**Lincoln**  
Galen Hardware

**Lititz**  
Ebv's Mill  
35 N Cedar St

**Manheim**  
N G Hershey & Son  
Cassel's Mill, Inc,  
R D #1

**Millersville**  
Millersville Supply Co

**Mountville**  
Kauffman Bros,  
113 W Main St

**Mt Joy**  
J B Hostetter & Son

**Peach Bottom**  
C E Wiley & Son

**Quarryville**  
Ross H Rohrer & Sons  
Conestoga Farm Service  
R D #2  
Musser's Mill, R D #1

**Stevens**  
Snader's Mill, Mt Airy

**Washington Boro**  
Ament's Hardware,  
R D #1

**West Willow**  
West Willow  
Farmers Assn, Inc  
Heir's Implement Store

**Willow Street**  
Dombach Bros

J. C. EHRLICH CO.

Distributor

736 - 38 L. Chestnut St., Lancaster, Ph. EX 3-2210 or 3-2489