

## Sellers Hold 43,100 Birds, Market Weak at Lancaster Poultry Auction

LANCASTER, May 15 — Sellers resisted a weakening in demand for broilers at the weekly auction at the Lancaster Poultry Exchange. The average dropped to 21.07 cents a pound.

Unsold were 43,100 head of broilers and fryers. Sold were 54,350 head in 15 lots

The price ranged from 20 3/4 cents to 21 3/4 cents. Ten lots, 12,875 head, of capettes brought from 25 1/2 to 27 3/4 cents, and 300 light hens sold for 16 cents.

Six per cent of the sales were at 21 1/4 cents, 67 per cent at 21 cents; 19 per cent at 21 1/4 cents and four per cent at 21 3/4 cents.

The 21.07 average was about equal with the average paid last year and in 1956.

Here are the results of the May 15 sale by lot number, seller with grower in parenthesis, number and breed, age in weeks and days, buyer and price per pound.

1. Charles Shreiner Jr., 400 White Vantress capettes, 12-6, Walter C Mellinger, 26 cents
2. D. E. Horn & Co. (John Reidel), 2,300 Indian River White, 9-2, Daniel K. Good, 21 1/4 cents
3. William C. Schultz, 7,600 White Vantress, 9-2, no sale, 21 1/4 cents bid.
4. Jack Bucher, 4,000 Indian River White, 9-6, no sale, 21 cents bid
5. Jack Bucher, 4,100 Indian River White, no sale, 21 1/4 cents bid.
6. Jack Bucher, 4,100 Indian River White, 9-6, no sale, 21 1/4 cents bid.
7. Jack Bucher, 1,500 Indian River White, 9-6, no sale, 21 cents bid
8. Eugene Schlosnagle, 8,400 White Vantress, 9-2, no sale, 21 cents bid
9. Eugene Schlosnagle, 8,400 White Vantress, 9-2, no sale, 21 1/4 cents bid
10. Jack Clauser, 300 Leghorn fowl, 2 years, Walter B. Leaman, 16 cents
11. Harry W. Hossler, 2,200

White Vantress, 10-2, John N. Thomas, 21 3/4 cents. 12. Clarence Zeager, (Herbert Zeager), 250 White Vantress, 10-6, S. E. Davis, 21 3/4 cents. 13. Howard Kreider Jr., 2,500 White Rock, 8-2, Carl B. Risser, 21 1/4 cents. 14. N. Parke Miller, 1,350 White Vantress capettes, 13-6, Carl B. Risser, 27 1/2 cents. 15. Warren Shearer, 5,000 White Mountains, 10, College Hill, 21 cents.

16. John K. Curry & Sons (Edwin L. Funck), 8,000 White Vantress, 9-2, Daniel K. Good, 21 cents. 17. Miller & Bushong (Lloyd Wenger), 6,500 White Vantress, 9-2, Starr Poultry, 21 cents. 18. M&B (Elmer Beiler), 2,400 White Vantress, 9-3, Walter C. Mellinger, 21 1/4 cents. 19. M&B (Clarence Hulsher), 4,000 White Vantress, 9, College Hill 21 cents. 20. M&B (Harold L. Brandt), 1,000 White Vantress, 9, no sale, 20 1/2 cents.

21. Milton K. Horst, 2,000 White Vantress, 9-5, College Hill 21 cents. 22. S. M. Fisher, 3,500 Indian River White, 10, Roy E. Ream, 20 3/4 cents. 23. John B. Kurtz (Clyde H. Martin), 3,500 White Vantress, 9-1, no sale, 20 3/4 cents. 24. James High (Fred Frey), 950 White Vantress capettes, 13-6, Marvin Sweigart, 26 1/4 cents. 25. James High (Frederick Frey), 1,300 White Vantress capettes, 13-6, Daniel K. Good, 26 cents.

26. James High (Emanuel Flaud), 2,700 White Vantress, 9-6, Daniel K. Good, 21 1/4 cents. 27. Allan L. Kauffman, 275 White Vantress capettes, 13-2, Carl B. Risser, 26 cents. 28. Marcelline J. Wagner, 5,000 White Vantress, 9, Allen Clark Inc., 21 cents. 29. Kenneth Noll, 2,500 White Vantress, 9-6, Walter B. Leaman, 21 1/4 cents. 30. Eugene K. Metzler, 1,500 White Vantress, 9, John N. Thomas, 21 cents.

## Slow Opening Weakens Market At Baltimore

BALTIMORE, May 19 — CATTLE AND CALVES: Around 40 per cent of the supply comprised of fed steers grading mostly good and choice. Only one load and few scattered head fed heifers on offer. Stockers and feeders made up 25 per cent of the run. Fully 1-3 of the supply comprised of cows with about 3 loads carried over from last Thursday. Good clearance all slaughter classes. Fairly good clearance on stockers and feeders about 2 loads unsold. Fed steers opened very slow, but later moderately active. Fed steers sold steadily to 25 cents lower with instances 50 cents off on choice. Slaughter heifers were steady. Cows were moderately active and steady. Bulls were slow and fully 50 cents lower with instances \$1.00 off. Vealers moved slow to moderately active and sold around \$2.00 lower, but mostly \$1.50 off. Stockers and feeders were moderately active and fully steady to strong. The bulk of 900-1200 lb average-good to average-choice fed steers \$28.00-30.00, one and a half loads of 1112-1195 lb mostly high-choice \$30.25-30.50 and a small lot of 917 lb prime \$32.00. A few standard steers sold at \$25.50-27.00. A load of 716 lb good slaughter heifers \$28.00 with a few scattered head standard and good \$24.00-28.00. Utility and commercial cows ranged from \$20.00-22.25 with a few high-commercial and standard up to \$23.60. Canners and cutters bulked at \$17.00-20.00 with a few light canners down to \$15.00. Utility and commercial bulls sold mainly at \$22.50-24.50 with a few head up to \$25.00 and a few cutters down to \$20.00. Choice 170-230 lb vealers brought \$32.00-34.00 with a few head up to

Thomas, 21 cents. 31. John J. Hess II (J. Emanuel Allgyer), 1,500 White Cross, 9, no sale, 21 cents bid. 32. Marcelline Wagner, 4,400 White Rock and White Vantress, 9, Allen Clark Inc., 21 cents. 33. James High (Fred Frey), 1,000 White Vantress capettes, 13-6, Carl B. Risser, 25 3/4 cents. 34. James High (Fred Frey), 2,750 White Vantress capettes, 13-6, Walter C. Mellinger, 25 1/2 cents. 35. N. Parke Miller, 1,350 White Vantress capettes, 13-6, C. F. Manbeck Inc., 27 3/4 cents. 36. James High (Fred Frey), 2,200 White Vantress capettes, 13-6, Walter C. Mellinger, 26 cents.

## Market Generally Weaker; Stockers Remain About Steady at Lancaster

Federal-State Market News Service  
LANCASTER, May 21 — CATTLE Three days 3,054, week ago 3,368. Compared with the previous Wednesday slaughter steers 25 to mostly 50 cents, instances 75 cents lower. Canners and cutter cows fully 25 to 50 cents lower, other grade \$1.00 lower. Bulls about steady, stockers and feeders slow and about steady.

Supply consisted of about 38 loads slaughter steers, 35 per cent stockers and feeders, and 25 per cent cows and bulls. Slaughter steers offered graded mostly good and choice.

Bulk of choice fed steers 1,000-1,300 lb \$28-30.50, part load 1,265 lb high choice \$31, with about two loads high choice and prime 1,100 and 1,255 lbs \$32. Mostly good steers \$27-28.25. Load high choice heifers 802 lbs bought-to-arrive \$29.50. A few small lots standard to low-choice heifers \$24.50-27.50. Bulk cutter,

\$34.50, good grades \$28.00-32.00 and standard \$24.00-28.00. About 4 loads 700-1040 lb good and choice feeder steers \$28.00-28.75, bulk medium and good 500-800 lb stocker and feeder steers \$25.00-28.00, including several loads 347-484 lb mostly medium to good stock steer calves \$29.00-30.00, half load mostly good included at \$32.50. Around 100 head mostly good stock steers sold at \$29.50 Saturday. HOGS Butchers opened slow, later moderately active. Sows to scarce for adequate test of prices. Barrows and gilts fully 25 cents lower. The bulk of the supply was mixed lots of U S No. 1, 2, and 3, 180-240 lb butchers which sold at \$24.25-24.50 with two loads of long hauled more uniform No. 1-3, mostly No. 1 and 2, 180-225 lbs \$24.60. A small lot of No. 3, 242 lb butchers \$23.75. Butchers at \$24.50 under 225 lbs.

and utility cows \$17.50-22.25 few commercial to \$23; canners and low-cutters \$15-17.25. Utility and commercial bulls \$23-26.50 odd head heavy utility up to \$27. Good fed yearling bulls \$27-28. Scattered lots common and medium stock steers \$22-26. Bulk medium and good stockers \$26.50-29.50. About two loads good grade stock calves and light yearlings \$30-32. A load mostly good 540 lbs stock heifers \$27.

CALVES Three days 572, week ago 650. Vealers barely steady, with considerable pressure late in week on kinds grading high-choice and prime. Bulk good and choice vealers weighing 140-200 lbs \$29-35, high-choice \$36-38, odd head prime \$39. Standard vealers \$25-29, utility down to \$20.50.

HOGS Three days 1,542 week ago 1,641. Barrows and gilts 25 to 50 cents lower than last Wednesday, sows in limited supply and about steady. U S No. 1, 2, and 3, 190-230 lb barrows and gilts \$24-24.50, a few No. 3 down to \$23.75. Small lots No. 1 and 2, \$24.75, with a total for week of about 60 head of No. 1, 200-220 lbs at \$25.00. Small lots No. 2 and 3, 230-245 lbs \$23.75-24.25. Sows, mixed grades No. 1 to 3, 300-500 lbs \$16-19, few sows under 300 lbs \$19.50.

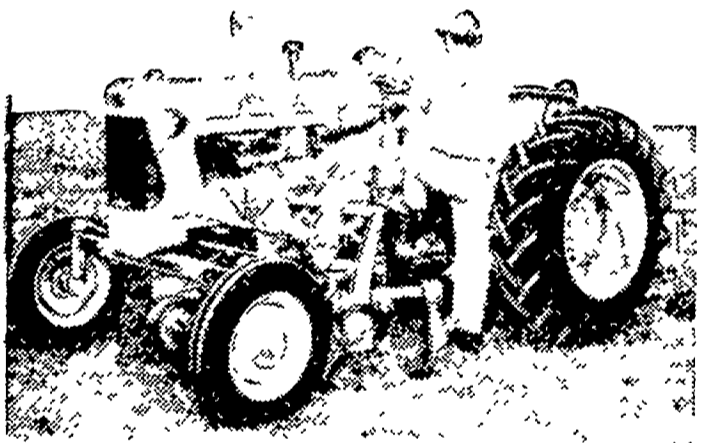
SHEEP Three days 473, week ago 402. Supply primarily native and Virginia spring lambs. Slaughter lambs steady to weak, instances 50 cents lower. Bulk good and choice native and Virginia spring lambs \$25.50-27. A few head aged sheep \$6.00-8.00.

100 White Holland Turkeys — 2 weeks old	
50 Beltsville Turkeys — 1 week old	
50 Silver Columbian Chicks — 1 week old	
Black Wilson Soy-beans bu.	\$5.00
Lanc. Sure Crop Seed Corn bu.	\$5.50
Trukey Starter Crumbles	4.85
Sheep Feed	4.05
Horse Feed	3.95
Fine Chick Feed	5.05
Peat Moss	4.00
Rabbit Pellets	4.95
Altman's Dog Feed per 100	\$8.00
20¢ Hog Feed	4.55

**LIME — FERTILIZER — INSECTICIDES**

**ALTMAN'S CASH FEED STORE**  
WILLIS H. WEAVER MANAGER  
947 Harrisburg Ave. Phone Lanc. EX 4-7715  
10c per hundred discount on half ton lots or more.  
PRICES SUBJECT TO CHANGE—WE DELIVER.

## STEP UP...



### to the latest in 2-ROW CULTIVATING

IT'S EASY

One step and you're in the tractor seat. The Allis-Chalmers 200 Series 2-row cultivator has no bars, rods or ropes to block the way.

You can see better, up ahead. Front sweeps, front tractor wheels, the crop row — all fall into your natural line of vision. You ride relaxed... do better work... feel far fresher after a day in the field.

Roll-in, quick hitching saves get-ready time. Gangs roll into position on the gauge wheels — just like a rubber-tired wheelbarrow.

For the easiest tractor cultivating you've ever done, try the Allis-Chalmers 200 Series cultivator.



- |  |  |
|--|--|
| L. H. Brubaker<br>Lancaster, Pa.               | Nissley Farm Service<br>Washington Boro, Pa. |
| Mann & Grumelli Farm Serv.<br>Quarryville, Pa. | R. S. Weaver<br>Stevens, Pa.                 |
| Snavelys Farm Service<br>New Holland, Pa.      |  |
| N. G. Myers & Son<br>Rheems, Pa.               | L. H. Brubaker<br>Lititz, Pa.                |

**LOANS**

FOR ANY FARM PURPOSE  
MADE THE FARMER'S WAY

**Lancaster Production Credit Ass'n.**

411 W. Roseville Rd.  
Lancaster, Pa.  
Ph. Lanc. EX 3-3921

## Your Headquarters for Quality Farm Supplies

<b>FEED</b>	<b>LANC. COUNTY FERTILIZER</b>
High Energy — Palatable Maximum Nutrition	Free-Flowing Pulverized & Granular
<b>SEED</b>	<b>PETROLEUM</b>
Tested — High Purity High Germination	Fuel Oils Motor Oil Gasoline Grease

**QUALITY FARM BUREAU PRODUCTS**

**DON'T DELAY!**  
**CHECK YOUR "Tire Needs" TODAY!**

FARM BUREAU "Tire Sale" ENDS MAY 31st

**1/3 OFF LIST PRICE** Auto — Truck — Tractor  
And Implement Tires

LIFETIME GUARANTEE — Road Hazard Warranty

Call or Visit Us Today

LANCASTER MANHEIM NEW HOLLAND QUARRYVILLE