

Holstein HIR Average 13,187 lbs. Milk, 486 lbs. Fat During 1957

The Holstein-Friesian Assn. of America has announced a lactation average of 13,187 lbs of milk and 486 lbs. of butterfat for cows completing records in its Herd Improvement Registry program last year.

Computed on the commonly-accepted two milking a day, 305

day, mature-equivalent basis, the average includes the production of 69,426 registered Holstein cows in all 48 states.

The national Holstein organization has operated the HIR program on a lactation average basis for two complete years.

DESPITE THE FACT that the 1957 figure includes the records of nearly 1,100 more cows, it represents gains of 88 lbs of milk and five lbs of butterfat over the 1956 figure.

Although actual records are still used in reporting the annual production of every cow in HIR-tested herds, the lactation figures have replaced actual herd averages in the program.

THE SYSTEM greatly simplifies accurate comparisons between herds and with the breed average since all cows are placed on an equal footing in regard to age, milking frequency and length of testing period.

Herd Improvement Registry, in continuous operation since 1929 provides individual lactation and lifetime records on every cow in participating registered Holstein herds.

The program, operated under the supervision of the state agricultural colleges, is currently enjoying unprecedented popularity with 83,892 cows in 2,201 herds enrolled.

In April of this year dairy price support purchases amounted to 12,582,198 pounds of butter, 3,816,933 pounds of cheddar cheese, and 107,020,707 pounds of nonfat dry milk, plus 22,006,998 pounds of nonfat dry milk purchased with Section 32 funds for domestic distribution.

Benson Finds Farm Economy Now 'Refreshing'

(Continued from page one)

year If the legislation fails, the nation's cotton acreage will be dropped to about 14 million acres, a figure which would make many individual allotments too small to farm.

BENSON APPEARS to be holding out for modifying the price support structure for the cotton crop and the dropping of escalator clauses. He indicated that any other legislation would stand a very good chance of being vetoed.

The acreage reserve program is still scheduled to die at the end of this year. The conservation reserve program will remain in effect.

The Secretary expressed regret that the Department was forced to give an unfavorable report on the proposed self-help plan for dairymen. He said, "We look forward to a healthy dairy industry. We are still looking for a self-help program. But most help to the industry must come from increased sales."

"A SURVEY HAS shown that the nation requires a nine per cent greater intake of calcium through milk. This is about double what the government is buying."

Benson described the farmers' troubles during the past few years as a "transition period" following a great boost in pro-

Inept Farmer Stands to Gain From Integration

(Continued from Page One)

are possible, Scoville said. Scoville did, however, downgrade the idea that the farm of the future will be a huge factory in the field. Most farms, he believes, will be integrated around a family work force.

TO MAINTAIN their bargaining position, the economist believes that two courses will be followed by the integrated farmer. Where labor returns are primarily on a wage or piece-rate basis, it is probable that many farmers will seek to unionize.

Hawaiian pineapple fieldworkers have been unionized for some years, as have dairy workers in the large dry-lot dairies in California.

Discussions have been held between broiler growers in Maine and the Meat Cutters and Butchers Union. These talks were dropped with no action being taken, but it's significant that the union was invited to the talks by the growers. Another labor union is said to be attempting to organize the commercial

duction to take care of needs of a nation at war.

"The transition is hard on farmers, but quite a lot of the transition is over," he said.

"Prospects for prices are good."

Gibberellic Acid Speeds Peach Seedlings

Fresh peach seeds treated with various rates of gibberellic acid will produce seedlings in about 15 days, according to Horticulturist M. B. Jones of the New Mexico A & M Experiment Station.

Jones cautions, however, that although gibberellic acid may have a place in commercial agriculture, a lot of text work will have to be done before safe recommendations can be made.

egg producers in New Jersey

FARMERS WHO operate under some kind of profit-sharing contract and own all or part of their land, buildings and equipment will continue to think of themselves as entrepreneurs. These farmers may form themselves into bargaining associations similar to beet growers associations, some milk marketing associations and other groups of this kind.

Integration increases the need for public research and educational activities to keep farmers posted on the profitable use of new technology, to seek improved ways of coordinating production processing and marketing functions, and to develop devices that might be more advantageous to farmers than close integration.

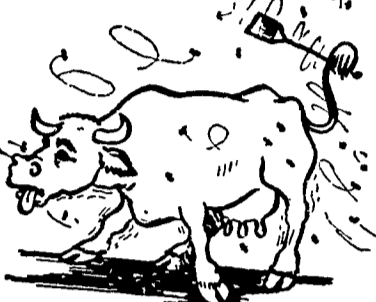
For example, improved insurance arrangements might be a better way to reduce risk than some existing contractual arrangements.

Get Those Flies!

... and get 'em fast with

ROCKLAND KLEEN-KOW Cattle Fly Spray

(with new repellent RC 11)



For space-spraying use
Kleen-Kow Aerosol
1 lb. or 3 lb. Disposable

Wherever Flies Congregate
ROCKLAND'S GREEN DEATH
2% Malathion Bait
Kills them for sure.

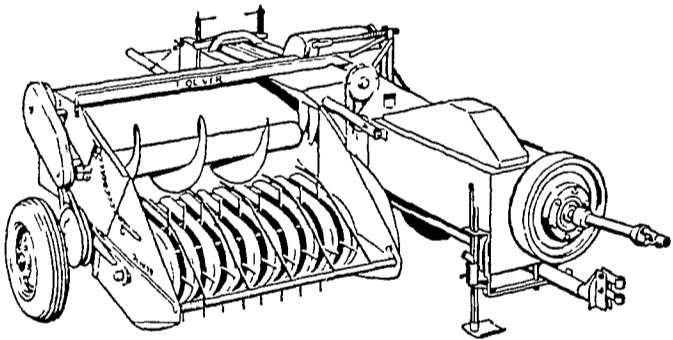


See Your Dealer

ROCKLAND CHEMICAL COMPANY
West Caldwell, New Jersey

NEW OLIVER BALERS

Twine-Tie and Wire-Tie
Turn Shorter, Handle Easier,
Bale Faster



Here's real top-speed baling. You can turn out as much as ten tons per hour with Oliver's new models—the twine-tie Model 60-T and the wire-tie Model 60-W—even in small, hilly, irregular fields.

A short-coupled "pivot-balanced" PTO is the answer. You can cramp the tractor wheels right up to the bale case, roll around the sharpest corner without letup. You never need shut off PTO power. You save time on every turn you make...get hay safely in bales when it's at its best.

Both models are equipped with new, leaf-saving pickups with positive drive, new knife guides to slice bales cleanly, and many other advances. You get a swinging drawbar, weatherproof twine or wire can, 5-way protection from damage, and quick, easy adjustment of bale length—12 to 50 inches. Twine- and wire-tying units are easy to interchange. Overrunning clutch and engine available as special equipment.



N. G. Hershey & Son
Manheim, RD. 1

Chas. J. McComsey & Sons
Hickory Hill, Pa.

Farmersville Equipment Co.
Ephrata, RD. 2

J. B. Lapp
Atglen

For a SUPERIOR SILAGE PRESERVATIVE

USE

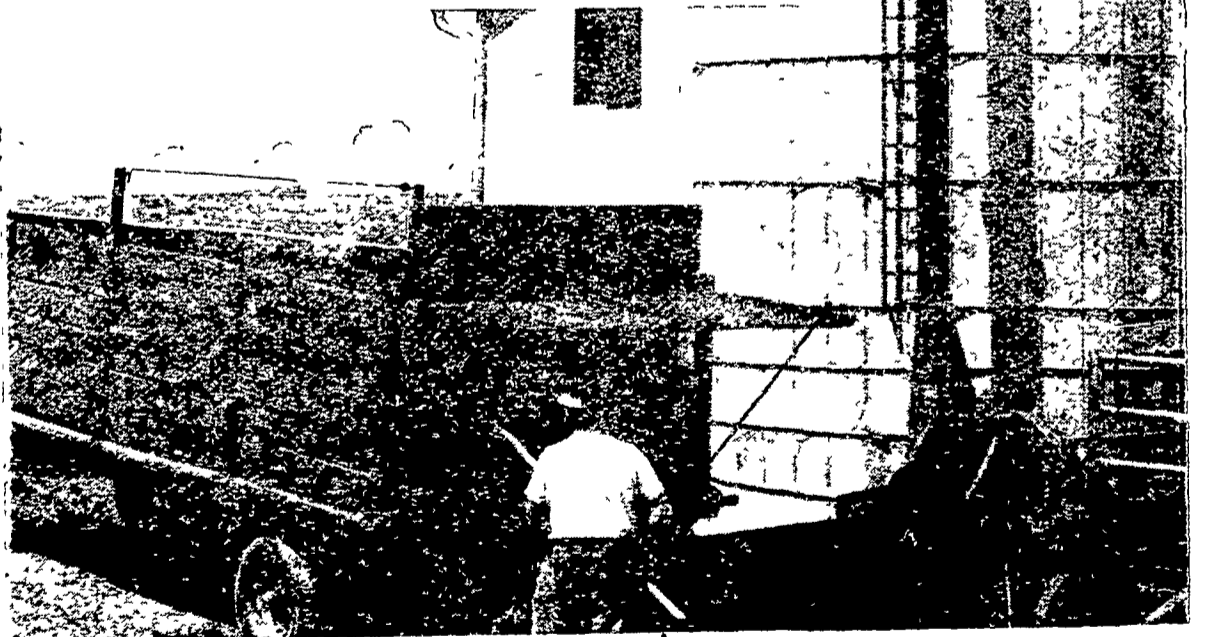
Eshelman S-O-S

INSURES — IMPROVES — ENRICHES SILAGE

The blend of quality ingredients in S-O-S acts as preservative, enriches silage with high level of digestible nutrients.

Easy to Handle . . . Free Flowing . . .
Reduces Run-off and Fermentation Odors

Add at rate of 100 to 150 lbs. per ton of chopped grass or grass-legume mixtures.



BEFORE YOU START FILLING YOUR SILO

See Us for Complete Details and Price . . .

MOUNTVILLE FEED SERVICE
R.D.2 Columbia, Pa.

LEROY GEIB
R.D.2 Manheim, Pa.

FAIRVIEW ROLLER MILLS
R.D.1 Narvon, Pa.

JOSEPH M. GOOD & SON
R.D.1 Bird-in-Hand, Pa.

SNADER'S MILL
R.D.1 Stevens, Pa.

WALTER & JACKSON, INC.
Christiana, Pa.

I. B. GRAYBILL & SON
Refton, Pa.

JOHN H. BONHOLTZER
R.D.4 Lancaster, Pa.