

## Broilers Retain Price Boom; Average 22.98 at Lancaster Exchange

LANCASTER, May 8 —Twenty-nine lots of broilers, 13,015 birds in all, averaged 22.98 cents a pound at the Lancaster Poultry Exchange's weekly auction today.

Last year the average for the corresponding week was 20.8 cents, with 117,900 birds sold.

The price this year ranged from 22¼ cents to 24¼ cents.

Thirty-one lots of Junior Chicken of Tomorrow Contest birds (12 to 175 per lot) sold at 23 to 26.5 cents the average being 24.11 cents per lot. The number of birds was 2,362.

One lot, 500 head, of Leghorn Fowl sold at 17½ cents. One lot, 600 head, of Cross Fowl sold for 23 cents. Two lots, 2,350 head, pullet capettes sold for 24 and 24½ cents. Two lots, 2,950 head, cockerel capettes brought 25½ and 26½ cents.

Six thousand Silver Cross cockerel went unsold.

Here is the May 8 sale by lot number, seller with grower in parenthesis, number and breed, age in weeks and days, buyer and price per pound.

1 Daniel G. Forry, 3,950 White Vantress, 9-2 College Hill, 22¼ cents. 2 Eugene Schlosnagle, 3,400 White Vantress, 9-2, College Hill, 23 cents. 3 Eugene Schlosnagle, 8,400 White Vantress, 9-2, S. E. Davis, 23 cents. 4 Allen E. Moyer, 2,150 White Vantress 9-4 College Hill, 23 cents.

5 Gerald Moyer, 1,000 White Vantress, 11, Ray W. Gibble, 23½ cents. 6 J. Floyd Kreider, 2,900 Indian River White, 10-5, College

Hill, 23 cents. 7 Aaron B. Sauder, 600 Sex Link fowl, 1 year, Walter C. Mellinger, 23 cents. 8 J. Lloyd Hossler, 600 White Vantress, 9-2, Carl B. Risser, 23 cents. 9 Eshelman's Experimental Farm, 3,900 White Vantress, 10, Roy E. Ream, 23½ cents.

10 Miller & Bushong (Jay Donmoyer), 1,500 White Vantress 10, College Hill, 23½ cents. 11 M&B (Lester Shurk), 6,000 White Vantress, 9-3, College Hill, 23 cents. 12 M&B (Joseph Bushey), 9,000 White Vantress, 10, College Hill, 22½ cents. 13 M&B (Joseph Bushey), 9,000 White Vantress, 10, College Hill, 22¼ cents. 14 M&B (John L. Herr), 4,100 White Vantress, 9-6, College Hill, 23 cents.

15 M&B (John L. Herr), 4,100 White Vantress, 9-6, Meader's Poultry, 23 cents. 16 M&B (William Wile), 2,400 White Vantress, 9, Daniel K. Good, 23¼ cents. 17 M&B (William Wile), 6,000 White Vantress, 9, Victor F. Weaver, 23 cents. 18 M&B (William Wile), 2,000 White Vantress, 9, Daniel K. Good, 23 cents. 19 M&B (Clair Bomberger), 5,000 Indian River White, 10-2, College Hill, 22¼ cents.

20 M&B (Elam B. Riehl), 1,750 White Vantress pullet capettes, 13-2, Carl B. Risser, 24¼ cents. 21 Clayton H. Shenk, 1,200 White Vantress, 10-2, John N. Thomas, 24¼ cents. 22 Samuel Grubb, 7,500 White Vantress, 9-2, Victor F. Weaver, 23 cents. 23 Samuel Grubb, 8,500 White Vantress, 9-2, Meader's Poultry, 23 cents. 24 Noah Kreider & Son, 7,000 White Vantress, 9-2, College Hill, 23 cents.

25 Noah W. Kreider & Son, 7,000 White Vantress, 9-1, Walter C. Mellinger, 23¼ cents. 26 Melvin K. Barge, 4,600 White Cross cockerels, 9-6, Daniel K. Good, 23 cents. 27 Melvin K. Barge, 600 White pullet capettes, 13-2, Daniel K. Good, 24 cents. 28 Melvin

## Active Buying Boosts Hogs Half at Chicago

CHICAGO, May 13 (USDA) — Hogs 7,000, active, uneven, fully 50 higher on butchers, several lots over 250 pounds 75 higher, sows 25 to mostly 50 higher, good demand by all interests and early clearance; 2-3 190-240 lb butchers 23-25-75, several hundred 1-2, 190-230 lb; 23 75-24; several lots mostly No 1, also 24, around 150 head, 200-215 lbs 24-25, 2-3 250-270 lbs 22-25, mixed grade 400-475 lb sows 19-19 75, with 325-400 lbs 19 75-20 75, most 500-550 lbs 18 50-19; shippers took 2,800 head.

CATTLE: 7,500 calves 200, slaughter steers and heifers moderately active, steady to strong, cows and bulls slow, cows steady to 50 lower, bulls steady to weak, vealers, stockers and feeder fully steady, load prime around 1,360 lb, slaughter steers 34 50, several loads high choice and low prime 1,140-1,250 lb weights 31 50-33 50, bulk choice steers all weights 28 25-31; good steers 26-28, standards 24-25 50, choice 1,200 lb steers and heifers 29 50, most good and choice heifers 25 50-29; utility and standard 21-25, half load good fed cows 24 25, standard cows 22 50-24; utility and commercial cows 19-22 50, most canners and cutters 16-19 50, utility and commercial bulls 21 50-24, good and choice vealers 30-34, standard 23-30, cull and utility 10-22, Loads good and choice 710 lb stock steers 28 60; short load choice 480 lb steer calves 32 50.

K Barge, 1,200 White Cross cockerel capettes, 13-2, Carl B. Risser, 25½ cents.

29 Morgantown Feed (Sam B. Glick), 600 White Vantress, 9-2, College Hill, 22¼ cents. 30 Morgantown Feed (Ivan Nolt), 700 White Vantress, 9-1, College Hill, 22¼ cents. 31 Morgantown Feed (Allan Schantz), 3,000 Silver Cross cockerel, 8-1, no sale, 18 cents bid. 32 Morgantown Feed (Allan Schantz), 8,000 Silver Cross cockerel, 8-1, no sale, 18 cents bid. 33 M. M. Wenger, 500 Leghorn fowl yearlings, College Hill, 17½ cents.

34 Miller & Bushong (Elam B. Riehl), 1,750 White Vantress cockerel capettes, 13-2, Carl B. Risser, 26½ cents. 35 Sam Grubb, 9,000 White Vantress, 8-6, Victor F. Weaver, 23 cents. 36 Sam Grubb, 6,000 White Vantress, 8-6, Victor F. Weaver, 23 cents. 37 Clayton G. Lefever, 1,515 White Vantress, 8-6, Carl B. Risser, 23 cents.

## All Classes Steady; 10 Head Hogs Reach \$25.50 at Lancaster

By Dave Lorenson  
Federal-State Market News Service  
LANCASTER, May 14 —

CATTLE 3,368, week ago 2,384. Slaughter steers and heifers strong to 50 cents higher than last Wednesday, cows unevenly \$25-1.25 higher, most advance on top cutter and utility cows. Bulls fully steady to strong compared with last Wednesday and stockers and feeders fully steady to strong, instances 50 cents higher.

Receipts included around 43 lots slaughter steers with about 40 per cent stockers and feeders only 15 per cent or less cows and bulls.

Bulk choice fed steers 1,000, 1,300 lbs \$28.50-31, few lots and loads high choice and mixed high choice and low prime \$31.50-32 part load 1,113 lbs. \$33, load 1,

25¼ lbs. prime steers \$33 50. Good and low choice steers \$27 25-28 50. Small lots good and low choice heifers \$25.50-28. Bulk cutter and utility cows \$19-23 25, commercial cows to \$23 75. Canners and low cutters \$15 75-18 75. Utility and commercial bulls \$23-26.50, good fed yearling bulls to \$27.50.

Bulk medium and good stocker and feeding steers and light yearlings 585-1,025 lbs \$26 50-29 50, mixed high good and low choice stock steers 600 lbs. and lighter \$29 50-31.

CALVES: 650, week ago 737. Vealers moderately active steady to weak compared with last Wednesday. Bulk good and choice 140-200 lb vealers \$20-35, a few

(Continued on page three)

If you are Ready To Buy . . .

## GOOD CHICKS

Pick up your phone and call

# "Bill" Burling

at Oxford, (Pa.) 286 COLLECT

Bill will pay the call.

Consumers, including buyers for stores, institutions, etc., want the Best Meat and Eggs . . . no irregular lots of birds or mixed colors and mixed quality eggs. The final result depends on what you start with, and we have the chicks that will make Premium-Price meat and eggs. Interior quality of eggs is "tops".

## Started Pullets Now Ready

Carey White Leghorns, White Rocks, Cornish-Rock Cross, Merryknoll and Golden Sex-Links, New Hamps and Barred Rocks. Phone today for a date.

BILL BURLING Box F, Oxford, Pa.

## For Better Corn or Grass Silage



## PREMIER SILAGE TREE

Yes—here is the one low-cost solution of your silage problem. Makes no difference whether it's corn or grass—just add a dash of Premier Silage Tree as silage is blown into the silo and you'll preserve its fresh flavor . . . you'll keep out offensive odors . . . you'll keep in all the good vitamins. Premier Silage "TREEDED" roughage crops for winter feeding smell sweet and your herd will relish the special added flavor.

Premier Silage Tree also helps make poor quality hay palatable.

### Get the Facts

Send today for free descriptive literature and prices on Premier Silage Tree. Don't pass up the advantages of feeding "TREEDED" silage. Act now, and put extra dollars in the bank with the money you save on Feed Bills.

LOCAL REPRESENTATIVE

R. S. Hess

Lititz — MA 62314

Roy S. Spangler

Columbia — MU 63599

Theodore Lehman

Lancaster — EX 44929

A Product of

HESRENHEIDE & THOMPSON, INC.  
YORK, PENNSYLVANIA

# Babcock's

## Healthy Chicks Make Great Layers!

Loren Bucher, Quarryville

R. D. 2, Pa., has this to say about

Babcock Bessies . . .

"We are very well pleased with the results that we are securing from our 2600 Bessies started in February and May of 1957. Our February batch has averaged about 80% for the 8 month period since production started in August. Mortality for the same period has been less than 2%. The eggs are 95% large and are grading 91% AA. We enjoy working with these birds since they are very quiet and free of cannibalism."



Loren Bucher

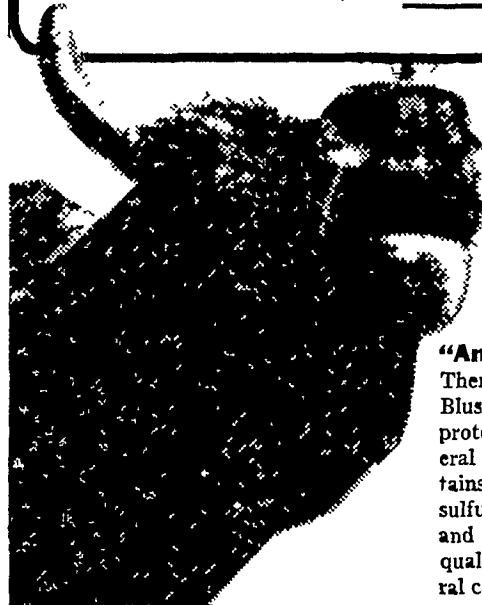
Mr. Bucher's results are real good, but you too can get results just like this with Babcock Bessies and good management. We'd like to hear from you.

# Babcock Hatchery

R. D. 3, LITITZ, PA.

Ph. MADison 6-5872

"Hooooray!  
STERLING  
TRACE-MINERAL  
BLUSALT  
is here now!"



"And are we cows glad! There's nothing like Sterling Blusalt to give us full-time protection against trace-mineral deficiencies. Blusalt contains manganese, iron, sulfate sulfur, copper, cobalt, iodine and zinc—blended with high-quality salt, the ideal natural carrier."

STERLING BLUSALT—Product of International Salt Company, Inc.

## Blusalt available here

- Cassels Mill, Inc., Manheim, R. D. 1, Pa.
- Eastern States Farmers Exchange, Manheim Pike, Lancaster, Pa.
- Eastern States Farmers Exchange, Pomeroy, Pa.
- Eby's Mill, Lititz, Pa.
- Harold H. Good, Terre Hill, Pa.
- M. S. Graybill and Son, Bareville, Pa.
- Paul H. Hurst and Son, East Earl R. D. 1, Pa.
- Ira B. Landis, 779 Valley Rd., Lancaster, Pa.
- Martins Feed Mill, Ephrata, R. D. 3, Pa.
- Millport Roller Mill, Lititz, R. D. 4, Pa.
- Mountville Feed Service, Columbia, R. D. 2, Pa.
- George A. Rutt, Stevens, Pa.
- J. C. Walker and Son, Gap, Pa.
- David H. Weaver, New Holland, Pa.
- C. P. Wenger and Sons, Ephrata, Pa.
- Wolgemuth Bros., Florin, Pa.