

## Farmers Supply

**PLAN EARLY  
FOR A BUMPER  
CROP!**



Use **BRIMM**  
for  
**CORN**

To help assure top yields and quality from corn crops, make sure that you have SWIFTS BRIMM plant food on hand when you are ready to plant

### FREE DELIVERY

On our regular routes  
Mail your order. Del-  
iveries made approx-  
imately in three days

### Hybrid Corn

Muncy Chief #H 780

Produced outstanding  
yields during last years  
drought conditions Long  
season growing corn has stiff  
stalks, long ears that husk  
easy Has excellent stand-  
ing ability

Bushel—\$11.00.

Muncy Chief #H-398

110 Day Maturity, Bu \$11 00

Muncy Chief #H-520

100 Day Maturity, Bu \$11 00

Muncy Chief #H 306

90 Day Maturity Bu \$11 00

U. S. 13

115 Day Maturity Bu \$9 25

EARLY SILO BU. \$11.00

LATE SILO BU. \$11.00

### Field Seeds

Wabash Yellow Soy Beans  
Black Amber Sorghum  
Hegari Sorghum  
Atlas Sorgo Sorghum  
Sweet Sudan  
Cert Piper Sudan  
Domestic Rye Grass  
Orchard Grass  
S 37 Orchard Grass  
Pasture Mixture  
Pasture Mixture with Ladino  
Timothy

### Grow Better Tobacco Plants

TRANSPANTONE

1 LB. . . \$4.00

Promotes root growth Makes  
stronger plants Put in water  
when transplanting

VHPF

30 LB. CASE . . \$7.50

Insures rapid growth and  
better stands.

ISOTOX . PINT . \$1.85

Transplanting solution. Use  
to control wireworms, cab-  
bage magots and other in-  
sects on tomatoes, celery and  
tobacco at transplanting time.

NUTRI LEAF "60"

5 LBS. . \$1.75

Feeds plants thru the leaves.  
Four applications during  
growing season

## FARMERS SUPPLY CO.

137 E. KING ST.  
Open daily 8:30 to 5:30  
Friday until 9.00

# Confinement Feeding of Hogs Means Added Emphasis on Management

(Continued from page fourteen)  
ing the six weeks they're in the  
nursery. Sanitation, temperature  
and ventilation are all important  
during this phase of production  
and while in the nursery, pigs  
need eight to 10 square feet of  
floor space each.

**WHEN WEANED AT** eight  
weeks, pigs are generally moved  
directly to growing and finishing  
shed. Ease and convenience of  
filling feeders and removing ma-  
nure and pigs' comfort are im-  
portant items to consider when  
building a finishing shed.

At present, 50 pigs are consid-  
ered an optimum number per pen  
in the feeding phase. Twelve to  
15 square feet of floor space are  
needed for each fattening hog.

In confinement rearing, as in

other production systems, major  
emphasis is placed on the brood  
sows' ration as the number of  
pigs weaned per litter has a direct  
bearing on profits, he says. How-  
ever, the confinement system pre-  
sents no new problems in feeding  
the brood sow.

**THE BABY PIG** represents the  
profit potential and it's at a criti-  
cal stage in life until it becomes  
eight to 10 weeks old.

Supplying a source of iron and  
copper to control anemia is es-  
sential in the confinement system.

Injectable iron compounds do  
an effective job in this respect.  
Other methods work, but atten-  
tion must be given their applica-  
tion.

Pigs should have a good creep  
ration available by the time they  
are two weeks. It should be palat-

able high in energy and contain  
a high-quality protein, minerals,  
vitamins, and antibiotics.

The creep ration can be fed to  
the pigs until they weigh from 40  
to 50 pounds. At that time, the  
protein level can be dropped from  
18 to 16 per cent.

For pigs in the growing-fatten-  
ing state, or from 50 pounds to  
market, the nutritional require-  
ments aren't as exacting as they  
are in earlier stages of life. How-  
ever, a well-balanced ration is  
essential for fast and economical  
gains.

As pigs become heavier, the  
protein level can be lowered. A  
ration with 12 per cent protein  
appears to be adequate from the  
time a pig weighs 125 pounds un-  
til he is sold.

**RESULTS AT THE University**

of Missouri and in other states  
indicate that, in most cases, free-  
choice feeding is more profitable  
than feeding a complete mixed  
ration.

The level of antibiotics in the  
ration can be lowered and possi-  
bly removed after pigs reach  
125 pounds without seriously af-  
fecting performance.

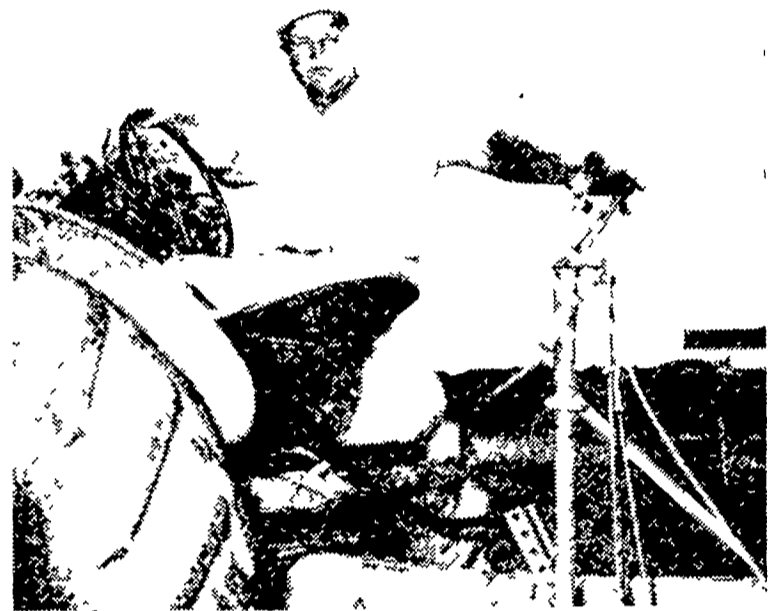
Confinement rearing can result  
in the production of healthier  
hogs when compared to raising  
hogs on dirt lots as soil is a good  
environment for many disease-  
producing organisms.

On the other hand, disease  
could well be the biggest problem  
in this type of operation unless  
proper sanitation is maintained  
as a large number of hogs en-  
hance the spread of any disease.

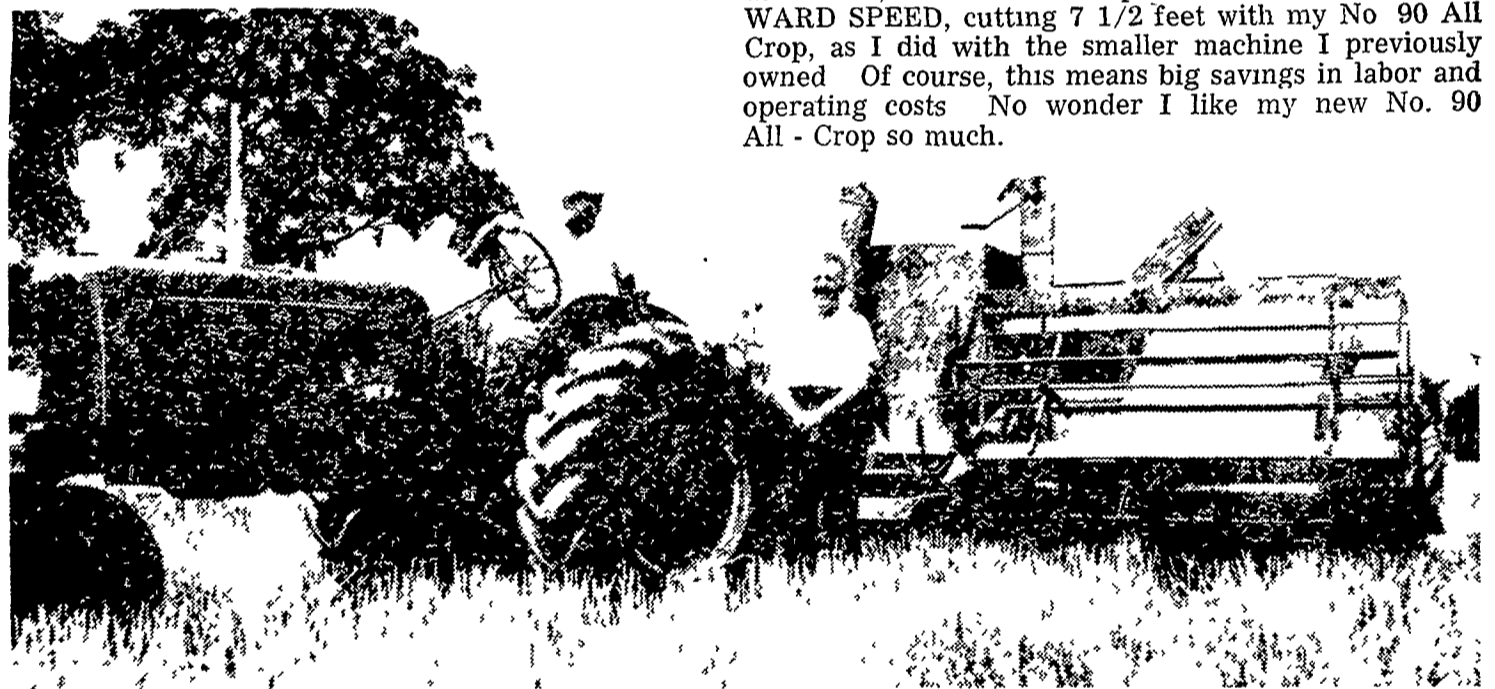
## A GREAT NEW SIZE ALL-CROP HARVESTER

7 1/2 FOOT  
MODEL '90'

FIELD TESTED and APPROVED  
ON LANCASTER COUNTY FARMS.  
READ THIS STATEMENT BY AN  
OWNER OF THE NEW ALLIS  
CHALMERS 7 1/2 FOOT P.T.O. NO.  
90 ALL-CROP.



Willis Esbenshade, 1631 Esbenshade Road, Lancaster, Pa., says: "With my No. 90 All-Crop I have harvested many acres of grain on my farms. Using my WD 45 tractor, I found I can operate at the SAME FORWARD SPEED, cutting 7 1/2 feet with my No. 90 All-Crop, as I did with the smaller machine I previously owned. Of course, this means big savings in labor and operating costs. No wonder I like my new No. 90 All-Crop so much."



Above are Willis Esbenshade (left) and Ed Stambaugh, Allis-Chalmers blockman, checking the New No. 90 All-Crop on Willis' farm

Let Us Show You The Advantages of The New No. 90 All-Crop

### ★ New Bigger Capacity

- 7 1/2 Foot Header.
- Larger Wider Strawrack and Cleaning Shoe.
- Larger Tires for Better Flotation.

### ★ NEW CONVENIENCE and OPERATING FEATURES

- Industrial Type Controls from Tractor Seat to control gear box, bin, and swinging tongue with lock for transport or field position. (See insert photo showing controls and operation from tractor seat).
- Retractable Finger Auger Feed.
- Quick Adjustable, Variable Speed Reel.

The Model "90" is new in every respect . . . not just a wider header on a former 6 foot machine. Each unit has been increased in size to handle greater volumes of higher yielding crops.

See It At Your Local Allis - Chalmers Dealer

Nissley Farm Service  
Washington Boro, Pa.

Mann & Grumelli Farm Serv.  
Quarryville, Pa.

Snavely Farm Service  
New Holland, Pa.

L. H. Brubaker  
Lancaster, Pa.

R. S. Weaver  
Stevens, Pa.

N. G. Myers & Son  
Rheems, Pa.

L. H. Brubaker  
Lititz, Pa.