

## Highest Average in Three Years Paid At Lancaster Poultry Auction

LANCASTER, May 1—Twenty-seven lots of broilers, 95,100 birds in all, averaged 22.1 cents a pound at the Lancaster Poultry Exchange's weekly auction today.

The price was the highest paid on the auction during the first week in May since 1955. Last year the average was 19.14 cents, with 151,170 birds being sold.

The price range was from 21 1/4 to 22 3/4 cents. One per cent of the birds were sold at 21 1/4 cents; 38 per cent at 22 cents; 48 per cent at 22 1/4 cents, 11 per cent at 22 1/2 cents and two per cent at 22 3/4 cents.

Seven lots, 6,755 head, of capettes sold from 23 to 25 3/4 cents. One lot of light roosters sold for 12 cents. Unsold were 15,600 broilers and 8,400 capettes.

Here is the May 1 sale by lot number, seller with grower in parenthesis, number and breed, age in weeks and days, buyer and price per pound.

1. Oliver S. Mast, 4,600 White

Vantress, 9-2, College Hill, 22 1/4 cents. 2. Oliver S. Mast, 3,100 White Cross cockerels, 9-2, Victor F. Weaver Inc, 22 1/4 cents. 3. Irvin B. Gingrich, 1,100 White Vantress pullet capettes, 14-3, Walter C. Mellinger, 25 1/4 cents. 4. Irvin B. Gingrich, 1,200 White Vantress pullet capettes, 14-3, Carl B. Risser, 25 1/2 cents. 5. Thomas Stoltzfoos, 155 Silver Hampshire capettes, 13, Martin M. Brendle, 23 cents.

6. Miller & Bushong (Paul Livengood), 1,500 White Vantress, 9-6, Roy E. Ream, 22 3/4 cents. 7. M&B (Harry F. Hess), 7,500 Indian River White, 10-2, S. E. Davis, 22 1/4 cents. 8. M&B (Harry F. Hess), 6,500 Indian River White, 10-2, College Hill, 22 1/4 cents. 9. M&B (Arthur Spickler), 3,000 Indian River White, 9-2, College Hill, 22 1/4 cents. 10. M&B (Arthur Spickler), 4,000 Indian River White, 9-2, College Hill, 22 cents.

11. Elvin H. Nolt, 700 White

(Continued on page three)

## Hogs Active, Higher at Chicago

CHICAGO May 5 — HOGS 8000 active, 25 50 cents, mostly 35 50 cents higher on barrows and gilts. Sows 25 cents, instances 50 cents higher. Early clearance. Good shipping demand. No sizeable lots No. 1 butchers under 230 lbs available. U S No. 2 and 3, 190-225 lb barrows and gilts \$21.25-\$21.65. Few selected lots \$21.75 and several lots No. 1 and 2 these weights \$21.75-\$21.85. Few lots No. 1 and 2, 195-220 lbs \$21.85-\$22.00, around 150 head at \$22.00. No. 2 and 3, 230-250 lbs \$20.65-\$21.25. Few No. 1 and 2, around 240 lbs at \$21.00. No. 2 and 3, 250-270 lbs \$20.25-\$20.75 and limited volume No. 3, 280-310 lbs \$19.50-\$20.25. Mixed grades 400-500 lb sows \$17.25-\$18.25. Most 325-375 lbs \$18.25-\$19.00 and most 500-550 lbs \$16.75-\$17.25.

CATTLE 19,000. All classes fairly active. Choice and rime slaughter steers steady with last weeks close or steady to 50 cents lower than last Wednesday. Decline on steers high choice and better over 1100 lbs steers grading good and below steady too strong compared last weeks close or about steady with last Wednesday. Other slaughter classes about steady compared late last week. Vealers steady to \$1.00 higher. Early sales stockers and feeders steady. High choice and low prime over 1100 lb slaughter steers early \$30.50-\$33.50. Load or so mostly prime steers still in first hands, high prime absent, bulk choice steers \$27.75-\$30.00. Good \$28.00-\$29.75. Utility and standard \$22.00-\$25.00. Several loads mixed choice and prime heifers \$29.00, most choice \$27.00-\$28.50, good \$25.00-\$26.50, utility and standard \$21.00-\$24.50. Standard cows \$22.50-\$23.50, utility and commercial cows \$19.00-\$22.50, most canners and cutters \$16.00-\$19.50, some mixed cutter and utility over 1100 lb cows \$19.75-\$20.00. Utility and commercial bulls \$22.00-\$24.50, cutter bulls \$20.00-\$21.50. Good and choice vealers \$29.00-\$33.00. Standard \$29.00-\$29.00, cull and utility \$18.00-\$21.00. Loads mostly choice 837 lb feeding steers \$28.50, load good 675 lb stockers \$27.75, few good 725 lb weights \$27.25, part load 775 lbs \$24.00.

SHEEP 1,000. Today's salable receipts lightest for any Monday since July 22, 1957. Run includes few decks shorn lambs and two short decks wool. ed lambs along with a small volume

## Hogs Jump .75 to Dollar Monday; Supply Moderate at Lancaster

LANCASTER May 2 — CATTLE Three days 2,884, week ago 2,889. Compared with last Wednesday slaughter steers fully steady, heifers in small supply fully steady to strong, cows fully steady, and bulls fully steady to strong. Stockers and feeders fully steady with last Wednesday.

Receipts included about 35 per cent stocker and feeder steers and 20 per cent cows and bulls. Around 43 loads slaughter steers on sale this week grading mostly good and choice.

Bulk choice fed steers 1,000-1,310 lbs \$28-30, several loads average to high choice \$30.50-31.50, oad 1,155 lb mostly prime steers \$33. Good and low choice steers \$26.75-28, mostly \$27 and up. A few mixed standard and good \$25.75-26.50. Small lots standard to choice heifers \$23.50-28, three head 965 lb prime heifers \$29.50. Bulk cutter and utility cows \$18-22, a few commercial cows \$22.25-23, canners and low cutters \$15-17.75. Utility and commercial bulls \$22.50-25, odd head weighty utility bulls

slaughter sheep Slaughter lambs active, fully 50 cents higher. Slaughter sheep fully steady. Eighteen head on shipment choice 100 lb spring lambs \$23.00. 154 head lot choice and prime \$2.00. No. 1 pelt lambs \$22.50. Small lots and decks good to choice shorn \$19.00-\$21.00. Short deck good 90 lb woolled lambs \$19.00. Short deck choice 134 lb woolled \$18.00. Cull and utility \$15.00-\$18.00. Good and choice woolled and short ewes \$8.00-\$10.00. Cull and utility \$6.00-\$8.00.

\$26, good fed yearling bulls \$26.50-27.50.

Bulk medium and good stocker and feeder steers and light yearlings 593-915 lbs \$26.50-28.75, several loads good and choice stock steer calves and yearlings 600 lbs and lighter \$29-30, load 1,100 lb good feeding steers \$28.75, three loads 1,043 partly fattened good feeding steers \$28.25.

CALVES 737, week ago 645. Vealers active this week uneven prices generally fully \$1.00 higher, instances up more. Bulk good and choice 140-200 lb vealers \$29.50-35, high choice and prime \$35.50-38, odd head to \$39. Standard grades \$25.50-29.50, utility down to \$20.50.

HOGS 1,576, week ago 1,775. Barrows and gilts \$75-1.00 higher than last Wednesday. Some in small supply fully steady. Bulk barrows and gilts mixed US 1, 2 and 3, 180-240 lbs in Wednesday's trade \$22.75-23, with most 190-230 lbs at \$23. Small lots No. 1 and 2, these weights \$23.25-23.50, about 10 head No. 1 \$24. Sows mixed US 1, 2 and 3, 300-550 lbs \$15.50-18.

SHEEP 459, week ago 477. Supply mainly native spring lambs. Quality not as good as most recent weeks. Spring slaughter lambs unevenly \$1.00-2.00 lower. Bulk good and choice 55-85 lb, native and Virginia spring lambs \$26-28. Aged sheep scarce.

### 100 CHRISTIE HAMPS JUST ARRIVED

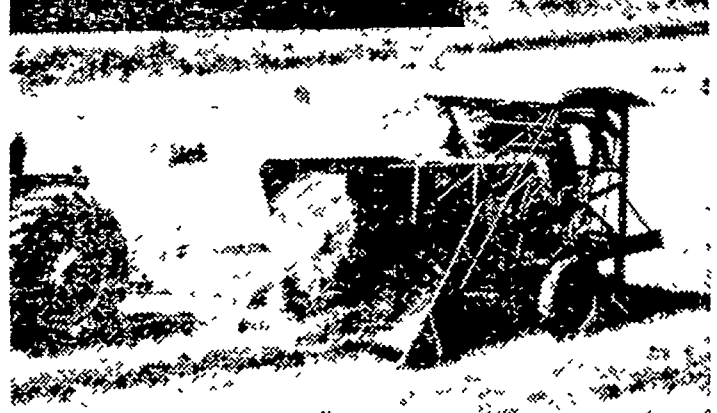
Turkey Starter crumb-les	\$4.90	Call Pellets 25#	1.60
B Starter NFZ	4.45	Kaffa Milk Replacer	4.45
B Grower	4.30	25# pail	3.70
Fine Chick Feed	5.10	Fitting Ration	3.50
Bluebird All Mash	3.95	16% Dairy Feed	3.80
24% Super A E Mash	4.35	Namco Midds	4.60
Sheep Feed	4.10	20% O F Hog Feed	10.45
Horse Feed	4.00	4 pt Barbed Wire Roll	7.95
		2 pt. Barbed Wire Roll	7.95

Special chop for Steers, Hogs, Heifers, Sheep 3.20  
 ORDER YOUR Quinea Keets Now ..... 45 cents each  
 Turkey Poultis Now 61-66 cents each

### ALTMAN'S CASH FEED STORE

WILLIS H. WEAVER MANAGER  
 947 Harrisburg Ave. Phone Lanc. EX 4-7715  
 10c per hundred discount on half ton lots or more.  
 PRICES SUBJECT TO CHANGE—WE DELIVER.

### New No. 10 Model ROTO-BALER



### makes round bales non-stop

Now you can make round bales without stopping field travel — with the new No. 10 Model ROTO-BALER.

Livestock prefer round bales because more leaves are saved by wrap-up action. Outside layer protects feed value of inside hay. Bales shed rain like a rolled roof.

#### NOW THERE ARE TWO ROTO-BALERS

Both ROTO-BALERS give you leaf-saving, power-saving advantages of roll-up compression. Try the new, fully automatic, non-stop ROTO BALER... or the standard model ROTO-BALER for big capacity baling at lowest price.

ROTO-BALER is an Allis Chalmers trademark



- |   |   |
|---|---|
| <b>E. H. Brubaker</b><br>Lancaster, Pa.                   | <b>Nissley Farm Service</b><br>Washington Boro, Pa. |
| <b>Mann &amp; Grumelli Farm Serv.</b><br>Quarryville, Pa. | <b>R. S. Weaver</b><br>Stevens, Pa.                 |
| <b>Snavelys Farm Service</b><br>New Holland, Pa.          |   |
| <b>N. G. Myers &amp; Son</b><br>Rheems, Pa.               | <b>L. H. Brubaker</b><br>Lititz, Pa.                |

### For a SUPERIOR SILAGE PRESERVATIVE

USE

## Eshelman S-O-S

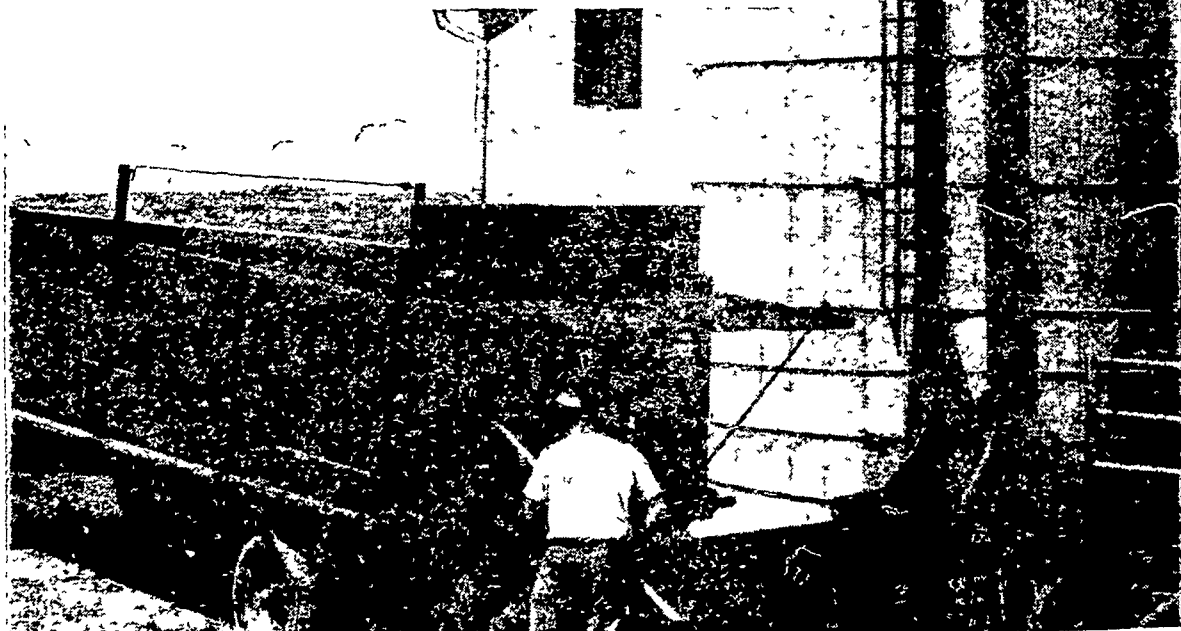
### INSURES — IMPROVES — ENRICHES SILAGE

The blend of quality ingredients in S-O-S acts as preservative, enriches silage with high level of digestible nutrients.

Easy to Handle . . . Free Flowing . . .

Reduces Run-off and Fermentation Odors

Add at rate of 100 to 150 lbs. per ton of chopped grass or grass-legume mixtures.



### BEFORE YOU START FILLING YOUR SILO

See Us for Complete Details and Price . . .

**REICH POULTRY FARM**  
R.D.1. Marietta, Pa.  
**E. MUSSER HEISEY**  
R.D.2 Mt Joy, Pa.  
**A. S. GROFF**  
21 S Queen St. Lancaster, Pa.

**CHAS. E. SAUDER & SONS**  
R.D.2 East Earl, Pa.  
**WARREN SICKMAN**  
R.D.1 Pequea, Pa.

**AMMON E. SHELLY**  
R.D.2. Lititz, Pa.  
**J. C. WALKER & CO.**  
Gap, Pa.  
**MUSSER'S**  
The Buck. R.D.1, Quarryville, Pa.