



THIS IS A typical herd of steers on which the implant research was tried. Penn State animal husbandmen found that most gains were made on dry lot feeding Penn State Photo)

Implanted Steers Make Best Gains in Drylot Feeding System, Tests at Penn State Show

In recent feeding trials at Pennsylvania State University with steers weighing approximately 700 pounds, half of the steers in each lot were implanted with stilbestrol (diethylstilbestrol) at the beginning of the feeding period. The dry lot steers were implanted with 36 milligrams those on pasture with 24 milligrams. The increases in gains varied with the type of feeding and were the largest for grain fed

Increase in gains of steers due to stilbestrol implant

Lot No	Total Number of steers per lot	Length of feeding period	kind of feeding	Average daily gains of implanted steers		Additional daily gains due to implant
				pounds	percent	
1	10	73 days	Dry lot, stove silage supplement	1.88	0.20	16.1
2	10	73	Dry lot, grass silage, supplement	3.07	0.50	16.6
3	10	73	Dry lot, grass silage, supplement	3.10	0.49	15.8
4	20	152	Dry lot, hay grain supplement	2.33	0.46	19.4
5	20	152	Legume pasture	2.53	0.34	15.5
6	20	152	Legume pasture grain	2.58	0.44	20.6
7	20	152	Grain pasture	2.11	0.20	10.5
8	20	152	Grass pasture	2.57	0.36	16.3

steers in both dry lot and on legume pasture. The smallest increases were obtained when grass pasture was the only feed, report R. C. Miller and G. R. Kean, professor of agricultural and biological chemistry, and acting head, department of animal husbandry, at Penn State.

IN ALL LOTS THE extra gains due to implanting were appreciable and obtained at a lower cost than if the stilbestrol had been fed at a 10 milligram level. Implanting also eliminates danger of other animals including breeding stock obtaining stilbestrol at Penn State.

(Continued on page twelve)

Better Pullets - Lower Costs - Less Labor

Our New "EARLY BIRD ALL MASH DEVELOPER PELLETS" will give you well developed and slowly matured birds. Birds that will have the capacity to really handle feed when they come into production. MORE LARGE EGGS QUICKER.

The Program For Light Breeds

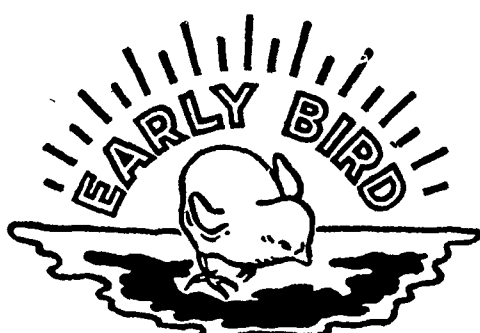
- No. 5 Chick Starter — Full feed 0-6 Weeks
- No. 32 All Mash Grower — full feed 6-10 Weeks
- No. 41 All Mash Developer Pellets 10-18 Weeks
(14-15 lbs. daily per 100 pullets)

Then Put Birds on Laying Feeds

NOTE: 18-19 pounds total feed intake should bring birds into lay and provide all nutrients required for a real bird with better than average laying ability and livability. This program does not require the extra 25 per cent feed intake necessary on the extreme high fiber feeds. A hopper feeding on range once daily will save labor and give you a very uniform bird.

Protection and good immunization against the various types of coccidiosis is provided, of course.

For an interesting comparison of costs and labor requirements of our various pullet feeding programs contact any EARLY BIRD SALES or SERVICE MAN or call us direct — LANCASTER — EXpress 2-2145.



Miller & Bushong, Inc.

Rohrerstown, Pa.

Ph. Lancaster EX 2-2145

Manufacturers of Poultry and Live Stock Feed Since 1875.

If you are Ready To Buy . . .

GOOD CHICKS

Pick up your phone and call

"Bill" Burling

at Oxford, (Pa.) 286 COLLECT

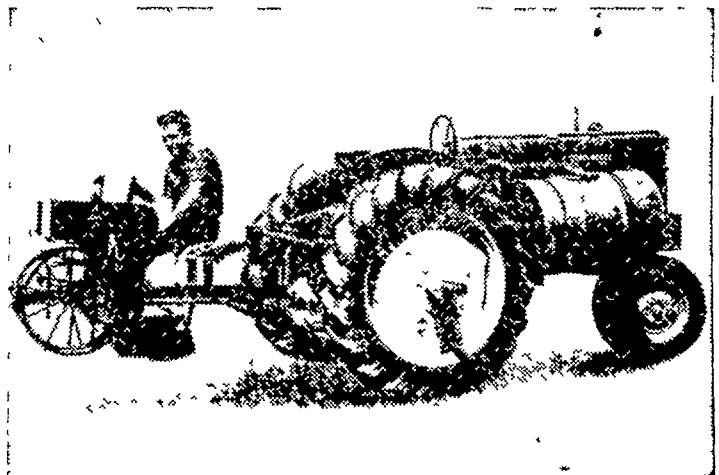
Bill will pay the call.

Consumers, including buyers for stores, institutions, etc., want the Best Meat and Eggs . . . no irregular lots of birds or mixed colors and mixed quality eggs. The final result depends on what you start with, and we have the chicks that will make Premium-Price meat and eggs. Interior quality of eggs is "tops".

Started Pullets Now Ready

Carey White Leghorns, White Rocks, Cornish Rock Cross, Merryknoll and Golden Sex-Links, New Hamps and Banded Rocks. Phone today for a date.

BILL BURLING Box F, Oxford, Pa.



SEE THE GENUINE

Mechanical Transplanter

With All The Features The Farmer Wants and Buys

- ★ New amazing Flo-Check Water Valve with Magic Air Control that assures uniform water supply to plants regardless of water level in the barrel.
- ★ New Manual shut off with roller reset on valve.
- ★ Positive action, self cleaning, Neoprene plant grippers.
- ★ Bronze Oilite main bearings.
- ★ Large adjustable plant trays.
- ★ Quick Change spacing gears.
- ★ Galvanized water tank.

"Truly Americas Best Engineered Transplanter" Made only by the Mechanical Transplanter Co.

SOLD AND SERVICED BY

LESTER A. SINGER

Rocks, Pa.

Ph. Strasburg OV 7-3226.