

THERE IS HARDLY a farm in the county now that does not have need for a spray rig of some type. Right now farmers are engaged in spraying alfalfa fields for spittle bug. Later this season it may be aphids or army worms. Herbicides are also being used more and more.

For a SUPERIOR SILAGE PRESERVATIVE

USE

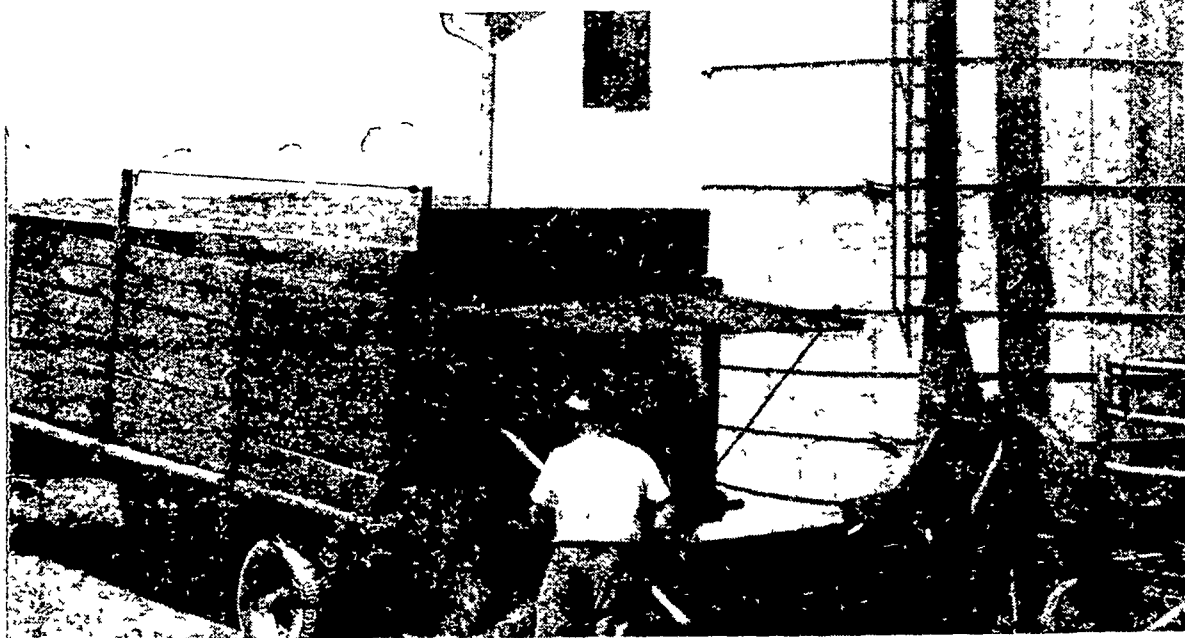
Eshelman S-O-S

INSURES — IMPROVES — ENRICHES SILAGE

The blend of quality ingredients in S-O-S acts as preservative, enriches silage with high level of digestible nutrients.

Easy to Handle Free Flowing
Reduces Run-off and Fermentation Odors

Add at rate of 100 to 150 lbs per ton of chopped grass or grass-legume mixtures.



BEFORE YOU START FILLING YOUR SILO

See Us for Complete Details and Price

- | | | |
|--|--|--|
| MUSSER FARMS, INC.
R. D. 2, Columbia, Pa. | WEST WILLOW FARMERS
ASSOCIATION
West Willow, Pa. | R. W. HOLLINGER & SONS
INC.
Manheim, Pa. |
| DAVID B. HURST
Bowmansville, Pa. | A. L. HERR & BRO.
Quarryville, Pa. | BROWN & REA
Atglen, Pa. |

Steers Steady To Stronger At Baltimore

BALTIMORE, April 28 — CATTLE AND CALVES Fed steers comprised approximately 65 per cent of the supply, fed heifers 8 per cent, stockers and feeders 8 per cent and balance mostly cows. The fed steer and heifer run was made up of good and choice grades. All classes were active except vealers and these moved slow. Fed steers were fully steady to 25 cents higher with most advance on good and below. Fed heifers sold strong to mostly 50 cents higher. Cows and bulls were very active and steady to strong with instances 50 cents higher on bulls. Vealers were scarce and sold weak to \$1.00 lower. Stockers and feeders were steady. Good clearance all slaughter classes, two loads stocker, and feeders unsold late. Bulk 900-1150 lb low good to average choice fed steers \$27.00-30.00, three sizeable lots 1214-1241 lbs included half load 818 lb high choice, carrying few low prime \$31.00, half load 1037 lb standard \$26.25 and load 1312 lb mostly good steers \$27.60. Low good to average choice 626-958 lb fed heifers \$25.25-28.00 bulk \$26.25 down and two packages standard \$24.00-24.50. Utility and commercial cows \$19.50-22.00 few standard \$23.00, canners and cutters \$16.00-19.75, few light canners down to \$15.50. Utility and commercial bulls \$21.50-24.00, few \$24.50-24.75. Choice 170-230 lb vealers \$32.00-34.00, few head to \$35.00, good \$29.00-32.00 and standard \$24.00-28.00. One load and two lots of 786-903 lb good to choice feeder steers \$27.00-28.00, load and two lots 500-668 lb good to choice stock steers \$29.00-30.00, short load 676 lb medium \$26.50 and small lot choice 512 lbs \$31.00. Small lots 415 lb choice stock steers \$30.00. Two lots 643-652 lb medium stock heifers \$23.50-24.50.

HOGS Butchers opened slow and sold steady. Sows were moderately active and sold steady. The bulk of the supply was mixed lots of U S No. 1, 2 and 3. 180-240 lb butchers and these sold largely at \$22.00-22.25 with two small lots No. 1 and 2. 195-200 lb \$22.35 and \$22.50. Around 130 head No. 1, 3, 200-240 lb \$21.60-21.85, one lot No. 2 and 3 257 lbs \$21.25. Two lots No. 2 and 3 266-275 lb garbage fed butchers \$20.25-20.50, 56 head No. 1, 3, 157 lbs \$21.00. Mixed No. 1, 3, 300-400 lb sows \$17.50-18.25, 400-500 lbs grading No. 2 and 3 \$16.75-17.25, few over 500 lb down to \$16.00.

SHEEP A small lot of mostly choice 81 lb spring slaughter lambs \$28.00 and a package of utility wooled slaughter lambs \$20.00.

Steers Slow, Hogs Active At Chicago

CHICAGO, April 28 — HOGS 8500 Fairly active, 25-40 cents higher on barrows and gilts, instances 50 cents higher, mostly on weights over 250 lbs. Sows 25-50 cents higher. Good shipping demand and all local packers in trade early. U S No. 2 and 3, 190-230 lb barrows and gilts \$20.75-21.15. Few lots No. 3 around 230 lb, as low as \$20.50. Several lots No. 1 and 2 195-220 lbs \$21.15-21.35. 75 head mostly No. 1 same weights \$21.40. No sizeable lots No. 1 these weights available. No. 2 and 3, 230-250 lbs \$20.25-20.75. Few No. 1 and 2 around 240 lbs also up to \$20.75. No. 2 and 3 250-280 lbs \$19.75-20.25. Some No. 2 250 lbs up to \$20.40. Moderate volume No. 3, 280-310 lbs \$19.00-19.75 and part deck No. 3, 360 lbs \$18.50. Mixed grades 400-445 lb sows \$17.00-18.00. Smaller volume 330-375 lbs \$18.00-18.75 and most 500-550 lbs \$16.25-17.00.

CATTLE 18,000 Choice and prime slaughter steers rather slow but steady, steers good and below moderate, active, mostly steady. Heifers moderate, active, mostly steady to strong spots 25-50 cents higher on kind average choice and below. Cows and bulls active, cows steady. Bulls strong. Vealers steady. Few early sales. Stockers and feeders steady. Few loads high choice and low prime 1200-1300 lb slaughter steers \$31.50-33.00. Load average prime to high prime steers still in first hands, load mixed choice and prime 1250 lbs at \$32.00. Feedlot mates of 1400 lb steers last Wednesday that brought \$32.50, bulk choice \$28.00-30.50, two loads average choice 1250 lb Nebraskas \$30.00, low choice 1100 lb steers \$28.25. Feedlot mates of steers at the same price last Wednesday, bulk good \$25.50-27.50, utility and standard \$21.50-25.00, load 000 lb standard \$24.75, these mixed breeds including a few tip-horned cattle, load 950 lb utility Holstein steers \$22.50. Good to average choice heifers \$25.00-28.50, utility and standard heifers \$20.00-21.50. Commercial and standard cows \$24.00-23.00, utility cows \$19.00-20.50, bulk canners and cutters \$1.00-19.00, few Holstein cutters as high as \$19.75. Few light and shelly canner cows down to \$15.00. Utility and commercial bulls \$21.50-23.50. Most good and choice vealers \$29.00-32.00, standard \$22.00-28.00, cull and utility largely \$12.00-21.00. Part load good 710 lb stock steers \$26.75.

SHEEP 3500 Bulk of salable receipts. No. 1 pelt slaughter lambs around three loads wooled lambs and limited supply slaughter ewes also on sale. Market opening slow. Early sales \$1.00-1.50 lower but around eight loads, shorn lambs and load wooled lambs unsold late. Slaughter ewes steady to weak. Deck choice 102 lb No. 1 pelt lambs \$21.50 early to city butchers. Deck choice 104 lb No. 1 pelt \$20.00. Choice wooled lambs opening \$20.00-20.50 for 101 to 107 lb averages. Cull to low good wooled and shorn \$14.00-17.50. Cull and utility wooled slaughter ewes \$6.50-7.50. Good and choice \$7.50-8.50. Cull to choice shorn ewes \$5.00-8.00.

PROCESSED POULTRY PHILADELPHIA, April 30 — Receipts once packed broilers and fryers, about steady. Supplies adequate for the continued good demand with preference for heavier sizes. Prices paid delivered ware house Philadelphia (cents per lb) Grade A & U S grade A 2-3 lb 32-33 mostly 32-33

Farmers Supply

PLAN EARLY FOR A BUMPER CROP!



BRIMM

- for
- POTATOES
- VEGETABLES
- CORN

To help assure top yields and quality from your crops, make sure that you have SWIFT'S BRIMM plant food on hand when you are ready to plant.

80 lb bag \$2.89

Ton \$60.80
Less 10% For Cash

Seed Oats

Cent Clinton bu \$1.75
Cent Garry bu \$1.50
Select Clinton bu \$1.50

GROW BIGGER, BETTER TOBACCO PLANTS

FERMATE DUST 25 lbs 4.25
Applied in dust form to control Blue Mold. Easy to apply every 5th day.

AGRI-MYCIN 9.35 ozs.

Effective control for Wild-fire and Blue Mold. Mix with water and spray plants.

BORDO-MIXTURE

4 LBS. \$1.19
Use as wet spray 4 lbs makes 50 gallons of spray. Two applications when plants are small.

D.D.T. 4 LBS. \$1.69
Kills fleas beetles mix as wet spray using 2 lbs D D T to 100 gallons of water.

TRANSPANTONE

1 LB. \$4.00
Promotes root growth. Makes stronger plants. Put in water when transplanting.

VHPF

30 LB. CASE \$7.50
Insures rapid growth and better stands.

ISOTOX PINT \$1.85

Transplanting solution. Use to control wireworms, cabbage magots and other insects on tomatoes, celery and tobacco at transplanting time.

NUTRI-LEAF "60"

5 LBS. \$1.75
Feeds plants thru the leaves. Four applications during growing season.

INSTANT VIGORO

3 LBS. \$3.00
Complete plant food for leaf and root feeding. Dissolves quickly in water.

Dried Blood 100 lbs. 8.65

Nitrate of Soda 100 lbs. 4.85

Bug Geta Pellets 5 lbs. 2.39
Kills Snails

FARMERS SUPPLY CO.

137 E. KING ST.
Open daily 8:30 to 5:30
Friday until 9:00