



A NEW RECORD placing tenth in milk and fat production among the 10 highest of the Guernsey breed in her class has just been completed by Mulberry Hill Margrie E, a senior two-year-old owned by

Raymond F. and Louise Witmer, Willow Street. She produced 14,403 pounds of milk and 723 pounds of fat in 365 days. (LF Photo)

Hereford Steers Show Advantage In Carcass Study Made in Chicago

Hereford steers emerged with a marked advantage over other breeds of beef cattle on numerous competitive points in a comprehensive carcass study conducted on the Chicago market.

The study was carried out by Armour & Co of Chicago, under the supervision of Dr. Robert W. Bray, in charge of meats work at Dr. Robert A. Merkel, formerly of Wisconsin and now of Kansas State College, in cooperation with the American Hereford Assn.

The completed study, announced by Secretary Paul Swaffar of the American Hereford Association, included data on 1,013 steers divided as follows: 440 Herefords, 362 Angus, 211 Shorthorns.

Here are the highlights of the study:

1. Prime Herefords topped other breeds in percentage of loin

cuts in the entire carcass.
2. Prime Herefords topped other breeds in percentage of rib cuts.

3. Prime Herefords topped other breeds in percentage of round cuts.

4. Less brisket and plate (low-priced cuts) in Herefords than

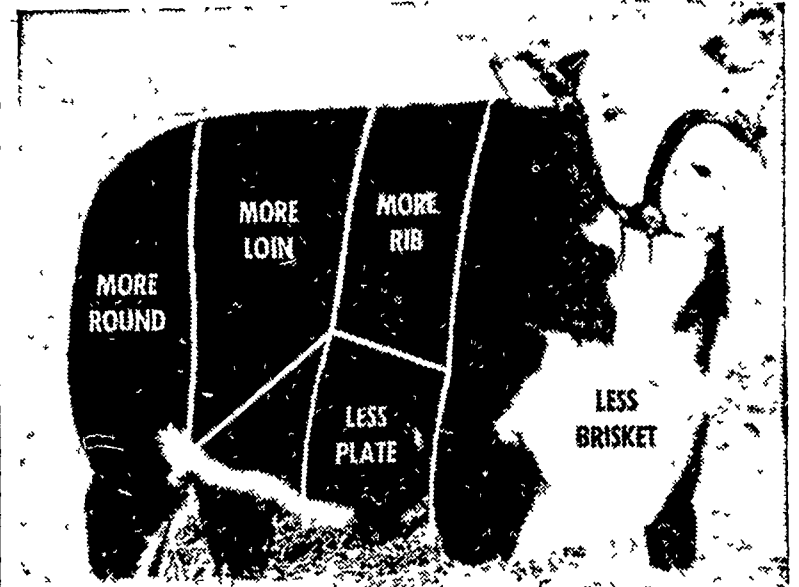
other breeds.

5. Herefords have .5 per cent less kidney fat.

6. Herefords have 1.01 per cent heavier hides, yet produce as much carcass, or dressing per cent, as the thinner-hided breeds.

7. Despite larger loin and rib in Herefords, eye marbling appears to be key guide to grade and value.

"An all important point receiving considerable attention of beef people in recent years is area of



THE DIAGRAMED Hereford steer shown above points out the highlights of the carcass study conducted on the Chicago market by Armour & Co. Prime Herefords showed a greater percentage of loin, rib and round cuts, and less percentage than other breeds in the low-priced cuts in the brisket and plate.

eye muscle in the loin and rib as a criterion of the red meat on a carcass. It was significant that the Armour study showed the average area of eye muscle for Herefords as one-half inch larger than the average for the three

breeds," Swaffar said.

In this connection, research studies are underway at several colleges on the question of eye marbling as a guide to carcass evaluation and as an indicator of the tenderness and quality of the meat from a consumer standpoint.

BRANDYWINE BUYERS SALE

—Selling—

100 Head Registered Angus

Bulls — Cows with calves — Bred cows

Bred heifers — open Heifers

SATURDAY, APRIL 19 — 1:00 P. M.

Sanger's Sale Barn — Located 4 miles east of Lebanon, Pa., on Route 422.

All cattle in pasture condition and originate from accredited herds.

Sponsored by—

PENNSYLVANIA ANGUS ASSOC.

Francis Enciso, Sec.-Fieldman

1107 N. 2nd St., Harrisburg, Penna.

1st Highest All-breed Hen Record in Pa. Laying Contest - 1957

2nd Highest Leghorn Hen Record in the Nation - 1957

WHY Keystone Leghorn CHICKS

WILL COST YOU LESS

1. Locally Owned and Operated
2. Breeding Flocks Are All Within Lanc. Co.
3. We do our Own Breeding Work
4. No National Advertising
5. No Long Distant Hauling of Hatching Eggs or Chicks
6. No Middle Man or Franchise Kick-Backs

Pa. U. S. Approved Pullorum-Typhoid Clean

KEYSTONE HATCHERY

Rep: Daniel R. Myer Ph. Leola OL 6-2243

Hatchery: Ph. Leola OL 6-6783

Farm: Ph. Ephrata RE 3-6179



Simplicity



Only \$355

MODEL VB 7 H.P. UTILITY TRACTOR

Indispensable power for farms, institutions, and estates. Does the job quickly, easily, and well.

- 6 Forward Speeds and 2 Reverse
- Duomatic Two-Speed Axle
- Le-Tone Muffler
- 100% Free Wheeling

Other Models \$150 up

SEE THE SIMPLICITY VB AT

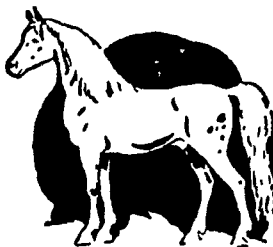
SNAVELY'S FARM SERVICE
NEW HOLLAND
Ph. EL 4-2214

HOOBER'S SPRING SALES PROMOTION!

FIRST PRIZE!

LIVE PONY With Saddle & Bridle!

TO BE GIVEN FREE AT OUR BIG FIELD DAY — APRIL 26th



Get Your Tickets In The Barrel Now And Win The Pony or One of Our Many Other Big Prizes!



CHARLES B. HOOBER

Intercourse, Pa. Ph. Southfield 8-3501

PUBLIC AUCTION

Tuesday, April 15, 1958

PROMPTLY AT 6:00 P. M.

Shoat Sale at 8:00 P. M.

Sale of Fat Bulls, Steers, Cows, Calves and Hogs Stocker and Feeder Steers and Bulls

We Get Top Market Prices for Your Livestock Give us a call — HI 2-4181

VINTAGE SALES STABLES, INC.
VINTAGE, P. A.

FARMERS

TRY

SWEET CORN

AS A CASH CROP

Guaranteed Price

Mechanical Harvesting & Hauling Provided

COPE BROS.

Manheim, R. #1, Pa.

(Landisville—TWinoaks TW 8-6721)

Field Representative -

JOHN L. BARE

Lancaster R. D. #3, Pa.

(Landisville—TWinoaks TW 8-2111)