

Henry Wilson Designed His Farm To Eliminate Labor and Chore Time

"I was determined not to lift another bag of feed," said Henry R. Wilson, R2 Nottingham, when explaining his feed mixing and distributing set-up.

The feeding set-up is only one of many features incorporated into a brand new dairy operation that Wilson has built on his 390-acre farm just South of Little Britain.

He moved to Lancaster County in 1955 after having farmed near King of Prussia in Montgomery County. On that farm he had been using the conventional stanchion milking barn to house the herd.

But on the new farm he was determined to save labor and cut building costs on the new barns.

So he adapted plans for pole structures and a walk-through milking stable to his needs. A huge bunker silo was built in place of an upright.

The structures include a pole loafing shed, a pole hay storage and feeding shed and a cement block feed room, milking parlor and milk house.

The entire area holding the bunker, sheds and barns is concrete. The manure can be scraped up and is not allowed to accumulate in the shed.

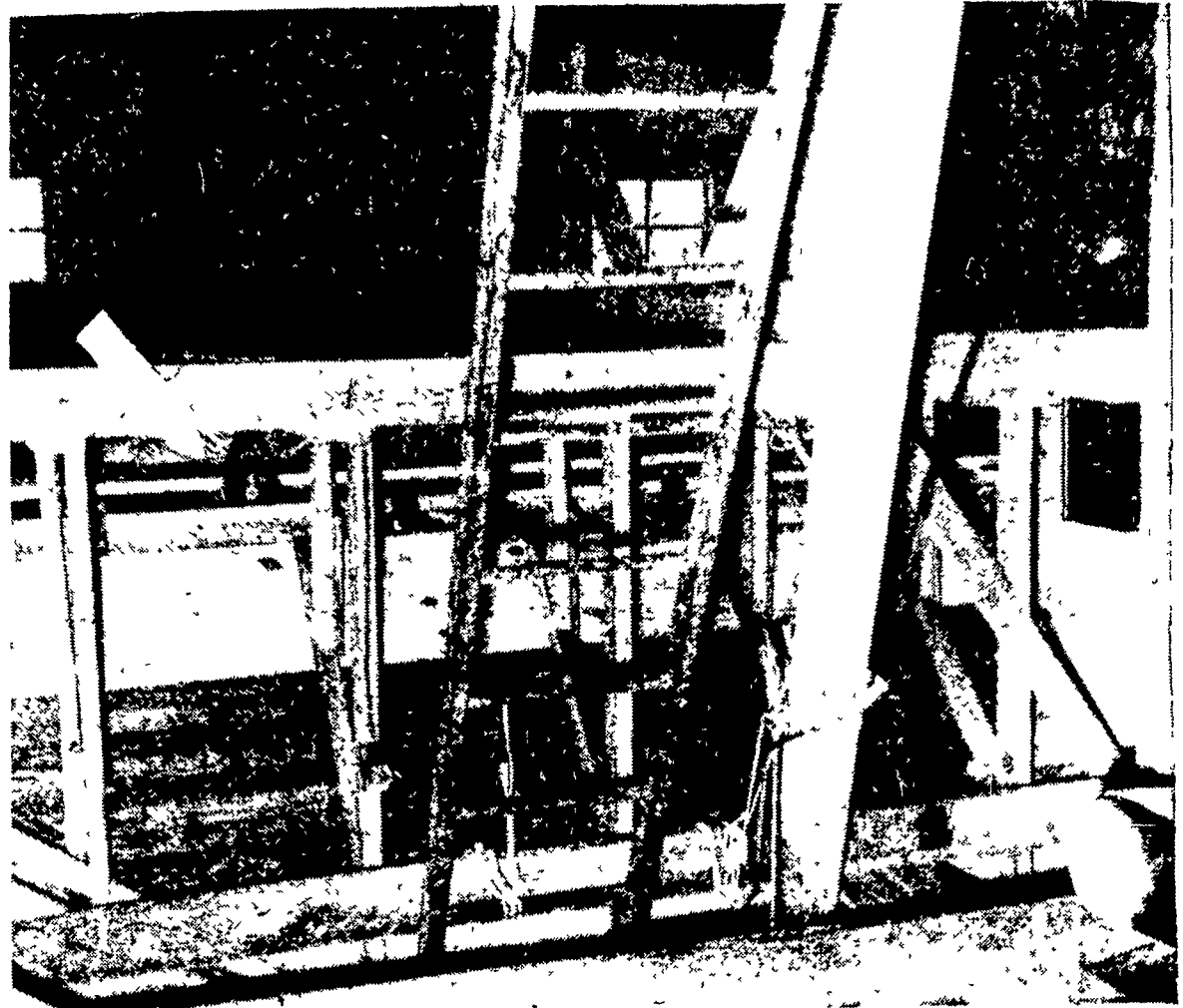
The cows walk through a six-unit herringbone type milking parlor. Wilson says that two men can milk 60 cows in an hour and a quarter using this set-up. A pipe-line carries the milk to a bulk tank.

Wilson has two bulk tanks. One he bought a few years ago from a dairy, and the other is one of the new stainless steel tanks.

The new tank is better adapted to farm use and is the one used mostly by Wilson. However, he said that the old tank sure came in handy during the snows when trucks could not make it up the long lane to his house.

Getting back to the feed mixer, here is how Wilson arranged it so that he would not have to lift any more 100-pound bags.

Both the mixer and mill are mounted on a cement slab that serves as a loading platform for trucks and farm wagons. The mixer empties into a bulk bin. A conveyor track leads from



THIS IS HENRY WILSON'S labor saving feed conveyor system. The feed is blown into the bulk bin from the mixer. A conveyor system, marked by the arrow, carries

the feed from the bin into the milking parlor. There it is gravity fed into individual feeders. (LF Photo)

**Highest
TEXACO
QUALITY**



**GARBER
OIL CO.**

Mt. Joy Ph. OL 3-9331



**KimberCHICKS® LAY
WELL IN VARIED
ENVIRONMENTS**

**Rank of nationally sold
chicks in 1956-57 tests**

(Based on income over feed cost
except in N. Y., C. and Missouri)

Entry Calif. Mo. N.Y. Tenn. Wisk. Ark.
B' ± # Ave. Rank

Kimber K-137	4	4	6	5	2	4.2
Strain A	3	10	—	10	1	6.0
Strain B	11	16	2	3.5†	4	7.3
Strain C	5	18	18	12	5	11.6
Strain D	—	6	24	—	10	13.3
Strain E	38	3	25	15	3	16.8
Strain F	23	20	—	7	18	17.0
Strain G	—	25	27	11	13	19.0

*Incomplete. †Average of 2 entries.

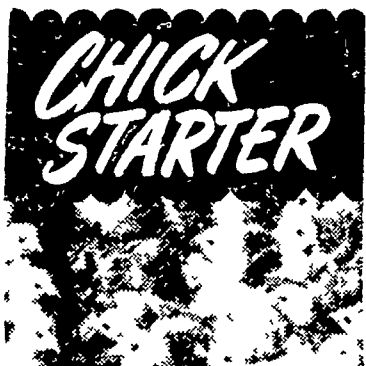
‡Income over feed and chick costs.

K-137 entries ranked **FIRST IN NET INCOME** among all nationally sold chicks entered in three or more of the above tests. The average net income from Kimberchicks was 56¢ higher than the average of all entries. Such consistent, profitable performance in a wide variety of environments should encourage you to order K-137 Kimberchicks this season.

**Longenecker's
Hatchery**

1110 South Market St.
Elizabethtown, Pa.

HOME



**THE QUALITY STARTER
ASSURES MAXIMUM
UNIFORM GROWTH!**



Master Mix Chick Starter is the quality starter that builds more healthy, hearty chicks than ever. Also contains medicants to help protect chicks against coccidiosis.

Eli M. Wolgemuth

Ph. Landisville TW 8-3031

Manheim R. D. 1

CLASSIFIED ADS PAY

NOTICE!

Just in:

AEROPRILLS®

Ammonium Nitrate
free-flowing

33.5% NITROGEN

for

**TOP DRESSING
SMALL GRAINS**

NOW ON SALE

Come in or call

**Eastern States
Farmers Exchange**

Phone ST 6-3647

Lanc. EX 4-3755

See Your Local
Representative

**STANDARD
Equipment, Inc.
ANNOUNCES ITS**

12%

**SPRING DISCOUNT
SALE**

ON

ALL-NEW BARN CLEANER

EASY-ALL COMFORT

STALLS

SALE CLOSURES MAR. 31, '58

GLENN H. HERR

Manheim RD 1

Phone Landisville TW-8-8391

**Seed
Potatoes**

All Varieties

Tobacco Seed

Tobacco Muslin

Fertilizers

Yigoro

Vertagreen

**GROFF'S
HARDWARE**

NEW HOLLAND

LOW PRICE FROM CARLOAD PURCHASE

BLACK & WHITE

36" TAPPANS

\$106.00

Have Special Knobs That Children Can't Turn

Ward Bottle Gas, Ephrata

REQUESTED

(Due to March Snow Storm)

**OVER 100 FAMILIES TELEPHONED
AND REQUESTED ENROLLMENT
PERIOD BE EXTENDED 10 DAYS**

Final Dead Line April 21st

CONESTOGA EMERGENCY FUND

RD-6-LANCASTER, PA.

Pays Death Benefit \$1000

ASSESSMENT PER DEATH \$110

**HOW TO ENROLL — All Persons in Good Health
Between the Ages of 15 and 68 for Men and 70 for
Women Are Invited. Complete Information and
Application Cards Will Be Sent on Receipt of Your
Name, Address and Age.**

ACT TODAY

DON'T LET YOUR FAMILY REGRET YOUR DELAY

IT'S NO ACCIDENT

First place honors for BERKS County in
1-Acre Yield Contest sponsored by Pa Crop
Improvement Ass'n

Won by Howard H. Gelsinger with

FUNK'S G-91

His yield was **THIRD** highest in the entire
1957 state contest.

See your Hoffman salesman or phone Landis-
ville TW 83421 for better-yielding seeds for
all your farm crops.



Hoffman Seeds, INC.

Landisville, Penna.