

Cattle Grades Form Basis for Good Market Reporting, Forecasting

Once in a while it's a good idea for us to review our knowledge of cattle grades and to take a look at the standards

Slaughter grade standards serve as the basis for the market news report which cattlemen use in deciding where and when to market. Statistics based on market news reports indicate consumer preferences and allow forecasts of market trends to help in planning what kind and how much of a certain quality of beef cattle to produce

Here is a brief summary of the current grade standards for slaughter cattle

PRIME GRADE cattle are low set, compact, and thickly fleshed. They are wide over the back, loin and rump and the rounds are thick and plump. Prime cattle have a thick and rather uniform covering of firm fat. They show evidence of high quality. Only steers and heifers are eligible for the Prime grade.

CHOICE GRADE cattle are moderately low set, compact and

have moderately thick natural fleshing. The back and loin are moderately wide and the twist and round moderately deep and plump. There is a moderately thick fat covering which may be slightly uneven. Choice cattle usually have a moderately refined appearance.

GOOD CATTLE are slightly low set and compact with slightly thick natural fleshing. They are slightly wide over the back and loin, the rounds may appear slightly flat with little evidence of plumpness.

These cattle have a slightly thin fat covering. They usually appear slightly refined, although older cattle in the grade may exhibit some coarseness and uneven fat covering.

STANDARD GRADE cattle may be steers, heifers, or cows, with a maximum maturity of approximately 48 months. They tend to be slightly rangy and thin-fleshed. The crops, back and loin are slightly narrow and the hips

are somewhat prominent. The loin, rump and rounds appear flat with no evidence of fullness. Fat covering in the grade is slightly thin to thin and may be in evidence only over the back, loin and ribs.

COMMERCIAL grade cattle are fully mature and this grade is limited to cows, heifers and steers that are over about 48 months of age. They are slightly rangy and thin-fleshed and have moderately wide backs and loins and prominent shoulders and hips. They frequently appear rather deep through their fore ribs. Commercial cattle have a moderately thick fat covering which is often patchy.

UTILITY GRADE cattle may vary greatly in appearance because of the many possible combinations of grade factors and the wide range in age of animals.

These cattle are rangy, up-standing, angular and thin-fleshed. They are usually narrow through the crops with a slightly sunken appearance of the loin, rump and rounds. Hips and shoulders are decidedly prominent.

Mature cattle of the grade have a slightly thick fat covering and finish ranges down to very thin for young stock.

CUTTER GRADE animals are usually fully mature, have very prominent hips and shoulders and very shrunken rounds and loins. They are rough and angular throughout. Fully mature cutters carry only a thin fat covering while young cattle of this grade show no indications of fat cover-

Least Tobacco, Least Price Mark 1957 Crop Sales

(Continued from page one)

and now stands at 146.5 million pounds including the 41.2 million pound 1957 crop. Disappearance last year was pegged at 49.4 million pounds, only 200,000 pounds of filler was exported, the rest used domestically.

In mentioning the expected five per cent reduction in acres planned by Pennsylvania tobacco growers, the economic experts preparing the outlook were not of the opinion that any effect would be made on the price.

The supply, they predicted, would be about 50 million pounds, actually six per cent more than last year. Carryover may be about 12 million pounds, some

six per cent lower than last year and the smallest on record.

Total supplies indicated for 1958-59 may approximate 170 million pounds, a decline of three per cent from the current level and a new low. A new report now being included in the outlook report is the amount of tobacco leaf represented in stocks of tobacco sheet. As of Jan. 1 of this year there were 263,000 pounds of Pennsylvania in sheet. This compares with 434,000 pounds of Connecticut Valley Broadleaf, 7,000 pounds of Ohio filler, 7,000 pounds of Puerto Rican filler, and a total of 1,222,000 pounds of all types of cigar tobaccos. Cigarette types total 1,494,000 pounds in the sheet and the total for all crops is 2,716,000 pounds. This does not include the tobacco stems that are added in the manufacturing process.

Pennsylvania Apple Juice Popular in Florida

G. W. Ropp, principal of a Ft. Pierce Fla. high school, reports that chilled apple juice is outselling orange and grape juice 2 to 1 at the dispensers located in the school.

The Tropicana people, who operate the machines, bought a volume of juice grade apples in the Appalachian Apple Belt this season

six per cent lower than last year and the smallest on record.

Total supplies indicated for 1958-59 may approximate 170 million pounds, a decline of three per cent from the current level and a new low.

A new report now being included in the outlook report is the amount of tobacco leaf represented in stocks of tobacco sheet. As of Jan. 1 of this year there were 263,000 pounds of Pennsylvania in sheet. This compares with 434,000 pounds of Connecticut Valley Broadleaf, 7,000 pounds of Ohio filler, 7,000 pounds of Puerto Rican filler, and a total of 1,222,000 pounds of all types of cigar tobaccos.

Cigarette types total 1,494,000 pounds in the sheet and the total for all crops is 2,716,000 pounds.

This does not include the tobacco stems that are added in the manufacturing process.

ATTENTION DAIRYMEN

For Your

Limestone Sand For Use In Dairy Barns

Call

D. M. STOLTZFUS & SON, INC.

Asphalt Paving & Crushed Stone Quarryville, Pa.

Quarryville — STerling 6-2191

NIAGARA BEDRENCH

for

TOBACCO BEDS

Raise Sturdy Weed Free Plants

with Healthy Roots

CLEM E. HOOBER

Intercourse

Ph. Southfield 8-3431

MUSSER Leghorn Chicks
For Large White Eggs

DONEGAL WHITE CROSS
For Broiler Chicks
"Direct from the Breeder"



MOUNT JOY, PA.

Phone Mt. Joy OL 3-4911



"Heard the latest, Gertrude?"

STERLING BLUSALT and STERLING GREEN'SALT
are both available right here!"

Sterling Blusalt: high-quality salt plus seven trace minerals essential to good growth and reproduction (manganese, iron, sulfate sulfur, copper, cobalt, iodine and zinc).

Sterling Green'salt: trace-mineral salt plus 10% phenothiazine for effective low-level control in internal parasites in livestock.
STERLING BLUSALT and STERLING GREEN'SALT—Products of International Salt Co., Inc.

Blusalt and Green salt available here

- Cassels Mill, Inc., Manheim, R. D. 1, Pa.
- Eastern States Farmers Exchange, Manheim Pike, Lancaster, Pa.
- Eastern States Farmers Exchange, Pomeroy, Pa.
- Eby's Mill, Lititz, Pa.
- Harold H. Good, Terre Hill, Pa.
- M. S. Graybill and Son, Bareville, Pa.
- Paul H. Hurst and Son, East Earl R. D. 1, Pa.
- Ira B. Landis, 779 Valley Rd., Lancaster, Pa.
- Martins Feed Mill, Ephrata, R. D. 3, Pa.
- Millport Roller Mill, Lititz, R. D. 4, Pa.
- Mountville Feed Service, Columbia, R. D. 2, Pa.
- George A. Rutt, Stevens, Pa.
- J. C. Walker and Son, Gap, Pa.
- David H. Weaver, New Holland, Pa.
- C. P. Wenger and Sons, Ephrata, Pa.
- Wolgemuth Bros., Florin, Pa.

FOR GREATER YIELD

Pasture, Small Grain and Corn

MATHIESON



ANHYDROUS AMMONIA

82% NITROGEN

Increase your yields and your profits.
Easily applied. Saves Time. Saves Labor.

DEALERS

HIESTAND INC.

MARIETTA RD. Ph. HA 6-9301

CLARENCE RUTT

NEW HOLLAND Ph. EL 4-8797

L. H. BRUBAKER

350 Strasburg Pike. Ph. Lanc. EX 3-7607

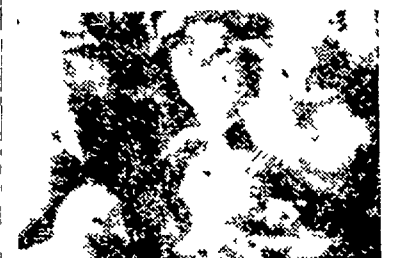
Lititz RD3. Ph. MA 6-7766



HOME



THE QUALITY STARTER ASSURES MAXIMUM UNIFORM GROWTH!



Master Mix Chick Starter is the quality starter that builds more healthy, hearty chicks than ever. Also contains medicants to help protect chicks against coccidiosis.

Eli M. Wolgemuth

Ph. Landisville TW 8-3031

Manheim R. D. 1