

Meat Promotional Activities Should Be Continued, Stockmen Say

(Continued from page eleven)

It was noted that poultry production would be up in 1958, with an increase of as much as six percent over 1957. Per capita consumption of poultry (including turkey) in 1958 is expected to reach 31.7 pounds.

In line with reduced production along with an increased population, beef consumption will be down slightly to 80 pounds per person. Per capita consumption of pork should move up from 61.6 in 1957 to 62.5 in 1958. Veal and lamb will both dip a little, with per capita consumption of veal in 1958 estimated at 7.9 pounds, and lamb at 3.9 pounds.

Per capita consumption of beef, veal, pork and lamb will total 154.3 pounds in 1958, according to current estimates.

In addition to Breimyer, other agricultural economists working with the National Meat Promotion Committee included Rus Ives, American Meat Institute, Herman Conway, National Live Stock Producers Assn., and W. E. Hamilton and James Rock, American Farm Bureau Federation.

Participants in the meeting included J. M. Jones, American Sheep Producers Council, M. D. Farr, American National Cattleman's Assn., Keith E. Myers, National Swine Growers Council, Jack Jackson, The National Game, Herman Aaberg, American Farm Bureau Federation, Mrs. R. M. Kiefer, National Association of Retail Grocers, John L. Van Zant and D. Washburn, National Beef Council, Charles H. Bromann, National Assn. of Retail Meat and Food Dealers, George B. Travis, National Association of Food Chains, P. O. Wilson, National Live Stock Producers Assn., Mrs. R. A. Burchart and Mrs. L. R. Houck, American National Cow Belles, Vernon Schwaegerle, American Meat Institute, Bronte H. Leicht, Poultry and Egg National Board, G. Chester Freeman, U. S. Department of Agriculture, and Carl F. Neuman, Max O. Cullen and Kenneth R. Franklin, National Live Stock and Meat Board.

STANDARD Equipment, Inc.

ANNOUNCES ITS

16%

SPRING DISCOUNT

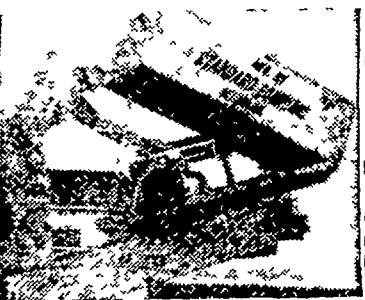
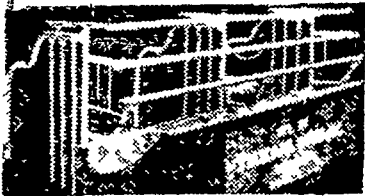
SALE

on

ALL-NEW BARN CLEANER

EASY-ALL COMFORT STALLS

SALE CLOSES MAR. 31, 1958



Ben S. Beiler

RONKS, PA. BOX 16

For More Information Write Today

LANCASTER FARMING

CLASSIFIED ADS

PAY

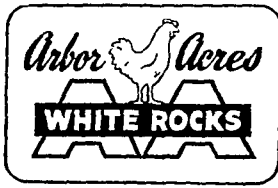
Phone STerling 6-2132

Moore Farms Produce 6,000,000 Chicks Yearly From America's Most Popular Breeders

Vantress - Arbor Acres Cross



Chas. Vantress Farms, Ga.



Arbor Acres Farm, Conn.

Hansen's Leghorn City (H.L.C.), Wash.



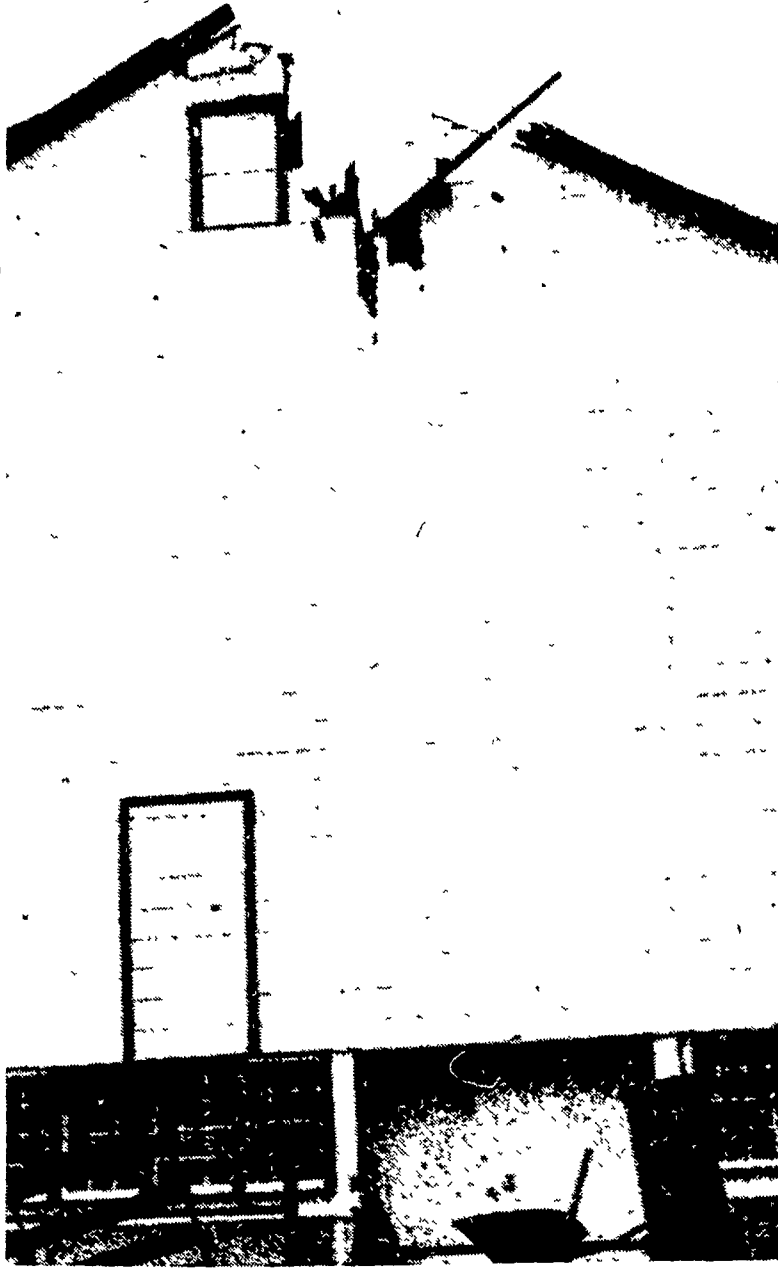
Moore Farms No. 58

White Leghorn Strain Cross

We hatch Leghorns every week in the year.

Write or call for prices and catalog

780 Eden Rd. Lanc. Ph. EX 3-3882



ONE OF THE most unusual cave-ins was at the farm of Robert Harnish, R1 Christiana. The entire ridge pole dropped, although the remainder of the roof remained intact. Harnish reported about seven tons of hay wet by the snow. (LF Photo)

Hershey Farms Puts 12,000 Acres In Soil District

The largest individual farm acreage ever placed in the Pennsylvania soil conservation program was received Friday by the Dauphin County Soil Conservation District.

The 12,000 acres of Milton Hershey Farms, site of the 16th National Plowing Contest and Conservation Exposition set for Aug. 21-22, was approved by the Dauphin district following the official signing of an agreement by James Bobb, vice president of the Hershey Estates, and James Landis, Hummelstown, RD2, vice-chairman of the district.

According to David G. Unger, soil conservation director in the State Department of Agriculture, Hershey Farms will install several conservation practices for and during the national program. Technicians of the U. S. Soil Conservation Service and Charles Wolgemuth, farm superintendent, this week started a study of conservation measures required at the Hershey Farms. They will work cooperatively with the Dauphin County Soil Conservation District, of which George Moore of Elizabethtown RD is chairman. From this study an entire conservation farm plan will be developed.

Moore said the work at Hershey is expected to take approximately five years of planning and construction. He pointed out that all conservation practices to be demonstrated at the national exposition will be practical measures based on the needs of the Hershey farms enterprise. All such practices will be completed during the event.

The addition of the 12,000 acres on the Hershey Farms brings to 26,403 acres the amount of farm land with the district in Dauphin County. There are 245 cooperators in the county.

Officers of the Dauphin County are Moore Landis, Morris Lebo, Millersburg RD 1, secretary treas-

urer, Aaron Hoyer, Middletown RD 1, and Charles W. Tittle, Harrisburg, county commissioner.

Guernsey Cow From Mt. Ararat Sets Record

PETERBOROUGH, N. H. — A new record placing seventh in milk production among the 10 highest of the Guernsey breed in her class has just been completed by the registered cow, Highland Chief's Patsy, a senior four-year-old, owned by Frank D. Brown, Jr., Mt. Ararat Farm, Post Deposit, Md., and bred by J. Thomas Catman, Highland Farms, Glen Rock, Pa.

'Patsy' produced 14,558 pounds of milk and 636 pounds of fat in 305 days on two times daily milking.

KILL GARLIC

In Pastures Now

with

Weedone 2, 4D

Concentrate "48"

1 gal. can \$ 3.45
5 gal. can \$16.25

SPECIAL PRICES ON LARGER ORDERS AND TO CUSTOM SPRAYERS

P. L. ROHRER & BRO., INC.

SMOKETOWN, PA.

Ph. Lanc. EX 22659

1st Highest All-breed Hen Record in Pa Laying Contest - 1957
2nd - Highest Leghorn Hen Record in the Nation - 1957

WHY Keystone Leghorn CHICKS

WILL COST YOU LESS

1. Locally Owned and Operated
2. Breeding Flocks Are All Within Lanc. Co.
3. We do our Own Breeding Work
4. No National Advertising
5. No Long Distant Hauling of Hatching Eggs or Chicks
6. No Middle Man or Franchise Kick-Backs

Pa U S Approved Pullorum-Typhoid Clean

KEYSTONE HATCHERY

Rep: Daniel R. Myer Ph. Leola OL 6-2243

Hatchery: Ph. Leola OL 6-6783

Farm: Ph. Ephrata RE 3-6179

IT'S NO ACCIDENT

In 1957 Official YORK County Extension Service Test, cooperating with Penn State University

FUNK'S G-14

tonned all entries (36 hybrids competing) with 86.7 bu per acre

See Your Hoffman Salesman or Phone Landisville 1W 8-3421 For Better-Yielding Seeds For All Your Grain Crops



A.H. Hoffman Seeds, INC. Landisville, Penna.