

Broiler Prices About Steady At Lancaster Exchange Thursday

LANCASTER — Broilers were about steady with the preceding week at the Lancaster Poultry Exchange's March 6 sale. A total of 80,350 birds were sold.

High price was 25 1/4 cents paid to grower Paul Livengood by Walter B Lehman for 1,950 White Vantress. Low price paid was 22 1/4 cents making an average of 23 26 cents for the sale.

A year ago sales were held on Wednesday and Friday. In 33 lots 133,900 broilers were sold at an average of 21 24 cents a pound.

Here is the March 6 sale by lot number, seller with grower in parenthesis, number and breed, age in weeks and days, buyer and price per pound:

1. John B Kurtz (Clyde H. Martin), 4,300 White Vantress, 9-2, Daniel K Good, 22 1/2 cents. 2. Keifer's Mill (Luther P. Khnger), 6,000 White Vantress, 9-3, Allen Clark Inc, 23 1/4 cents. 3. Moore Farms (Peter Baergen), 350 White Rock females, 14 months, Walter B Lehman, 24 3/4 cents. 4. George Neuman (William Schreck), 4,000 White Vantress, 9, Allen Clark Inc, 23 1/4 cents. 5. Andrew N Miller, 2,000 White Vantress, 9, Ray W Gibble, 23 1/2 cents.

6. Andrew N. Miller, 2,000 White Vantress, 9-6, John N. Thomas, 25 cents. 7. John Byers, 15 yearling Leghorn fowl, Carl B. Risser, 16 1/2 cents. 8. John V. Erb, 4,000 Indian River White, 10, Daniel K Good, 22 1/2 cents. 9. John V Erb, 5,000 Indian River White, 10, College Hill Poultry, 22 1/4 cents. 10. John V Erb, 5,000 Indian River White, 10, Victor F. Weaver Inc, 22 1/2 cents.

11. James R Landis, 350 yearling Leghorn fowl, Carl B Risser, 16 1/2 cents. 12. Graybill Miller, 750 White Mountain, 9-6, withdrawn. 13. Graybill Miller, 750 White Mountain, 9-6, withdrawn. 14. David K Burkholder, 1,400 White Vantress, 10, Marvin Sweigart, 23 1/4 cents. 15. David K Burkholder, 1,400 White Vantress, 10, Walter B Lehman, 24 1/4 cents.

16. David K. Burkholder, 2,100 White Vantress, 10, J Robert Charles, 23 cents. 17. David K Burkholder, 2,100 White Vantress, 10, Victor F Weaver Inc, 23 cents. 18. Miller & Eushong (Fred H. Sherick), 1,300 White Vantress pullet capettes, 13, Walter C Mellinger, 37 1/2 cents. 19. M&B (Fred H. Sherick), 1,300 White Vantress

cockerel capettes, 13, Ray W. Gibble, 37 cents. 20. M&B (Glenn Deardorff), 3,000 White Vantress, 10, Daniel K Good, 24 1/2 cents.

21. M&B (Richard Blessing), 3,000 White Vantress, 9-2, Daniel K Good, 22 3/4 cents. 22. M&B (Paul Livengood), 1,950 White Vantress, 9-5, Walter B Lehman, 25 1/4 cents. 23. M&B (Harold Hollinger), 1,500 White Vantress, 9-2, John B Rettinger, 24 1/2 cents. 24. M&B (Frank Weidman), 800 White Rock capettes, 13, Carl B. Risser, 34 1/2 cents. 25. M&B (Richard Ingram), 6,800 White Vantress, 9, C. F. Manbeck Inc., 23 cents.

26. M&B (G. Walter Jackson), 4,000 White Vantress, 9-3, Walter C Mellinger, 23 cents. 27. Melvin K Barge, 1,100 White Vantress capettes, 13 1, Linn Poultry, 37 1/2 cents. 28. Mark Merkey, 550 White Vantress, 10-6, no sale, 21 1/4 cents. 29. Raymond H Weaver, 4,000 White Vantress, 9-6, Roy E Ream, 23 1/2 cents. 30. John Bacon, 800 Leghorn fowl, Daniel K Good, 17 cents.

31. Howard Kreder Jr, 1,700 White Rock, 9-6, Walter C Mellinger, 25 1/4 cents. 32. Gerald Grabson, 7,200 White Rock, 10-2, no sale, 19 1/2 cents. 33. Arthur Craybill, 350 Leghorn fowl, Carl B Risser, 16 1/2 cents. 34. William Schultz, 5,800 White Vantress, 9-6, Meaders Poultry, 23 1/4 cents.

\$33 Prime Top At Chicago Tuesday

CHICAGO, March 12, Estimated salable receipts cattle, 5,500; calves 200, hogs, 9,000, sheep, 1,000.

CATTLE Market fully steady with spots 25 50 higher; cows steady, spots 25 higher, bulls about steady; vealers steady; stockers and feeders firm; half load mostly prime 977 lb slaughter steers 33 00, choice steers 28 50-32 00, bulk good grade 25 50-27 00, mixed good and low-choice 27.25-28 00; good and choice heifers 24 00-28 00, standard 21 50-23 50, utility and commercial cows 16 75-19 00, canner and cutter 14 50-17 00; utility and commercial bulls 20 00-22 50, good and choice vealers 28 00-32 00, standard 21 00-28 00, cull and utility vealers 10 00-21 00.

HOGS: Bulk sales all weights butcher weak to 25 lower; sows steady to 25 lower; 190-260 lbs 20.50-20.90, 200-230 lbs 20.90.

(Continued on page three)

35. William C. Shultz, 5,400 White Vantress, 9-6, Meaders Poultry, 23 1/4 cents.

36. Morgantown Feed & Grain (George Ludwig), 3,100 Red and White Vantress, 10, Carl B. Risser, 23 cents. 37. Glenn H Herr, 400 yearling Leghorn fowl, Carl B Risser, 16 1/2 cents. 38. Moore (Peter Baergen), 500 White Rock females, 14 months, Walter C Mellinger, 24 cents. 39. Melvin K. Barge, 1,100 White Vantress cockerel capettes, C. F. Manbeck Inc., 36 1/2 cents.

Cattle Prices Tend Down, Prime Short at Lancaster Stock Yards

LANCASTER, March 12 — CATTLE Receipts about like a week ago. Slaughter steers steady to 25 cents or more lower than last Wednesday. Cows 50-100 higher than last Wednesday, bulls about steady, stockers and feeders fully steady to strong.

Bulk choice fed steers \$27 75-30 50, high choice and mixed choice and prime \$31 25-31 50, good and low choice steers \$25 75-27 50. A few standard and good heifers \$22-24, odd head choice to \$26. Bulk cutter and utility cows by Wednesday \$15 18.75, commercial up to \$20, canners and low cutters \$13 50-14 75. Utility and commercial bulls \$21 50-23 50, good fed yearling bulls to \$20.

Bulk medium and good stocker and feeder steers \$24-26, several lots and loads good and choice 750-1,000 lb. feeding steers \$26 50-26 75, load 985 lb choice feeding steers \$27.25, choice 600 lb short

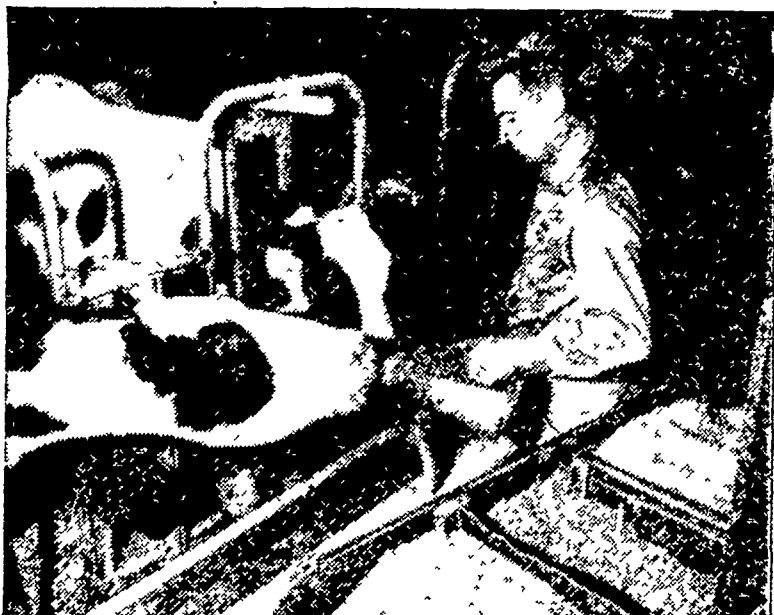
yearlings \$28 50. Some common and medium stock steers \$20-23 50.

CALVES: Vealers mostly steady with last Wednesday. Bulk good and choice vealers \$26 50-31, high choice to \$33, prime grades absent. Standard grade vealers \$23 50-26, utility down to \$17, culls as low as \$13.

HOGS: Supplies about like last week. Barrows and gilts around 25 cents higher than last Wednesday, sows steady. Bulk barrows and gilts mixed U S 1, 2 and 3, in Wednesday's trade \$21.75-22, a few sales No. 3 back to \$21.50. Small lots No. 1 and 2 to local small killers \$22.25-22 50. A few lots 260-270 lbs mixed 2 and 3 grade at \$21. A few 160-180 lb barrows and gilts of mixed grade \$20 75-21 50. Sows mixed U S 1, 2 and 3, 300-550 lbs \$15.50-19.

SHEEP: Supplies small mostly (Continued on page three)

Cows that stay on feed Hold Up in Production



A car cannot go without gas. Neither will a cow produce milk if she does not take in an adequate supply of milk making nutrients.

That's why Beacon's Dairy Feeding Programs take a two-fold approach to sustaining high milk production:

1. Make available all the nutrients the cow needs to make milk and maintain body reserves.
2. Provide palatability and uniformity so that cows stay on feed, get all the nutrients that are made available.

The records of thousands of dairymen prove the value of this two-fold approach. Beacon feeders will tell you that cows relish their feed, are more persistent in the latter part of their lactations.

The proof is in the milk pail. You'll agree once you've tried the Beacon program on your herd.

Beacon Dealers and Beacon Advisors are located throughout Lancaster County. For the name of the one nearest to you please phone or write:

The Beacon Milling Company
Philadelphia and Carlisle Sts., York, Pa.
Telephone: York 8-2341.

BEACON

AMES IN-CROSS



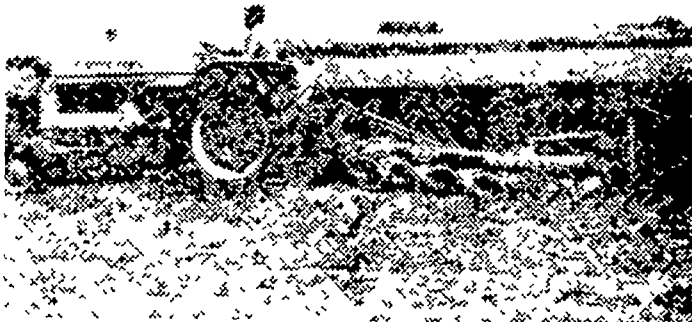
It takes Ames In-Cross 10 years to develop the chick you buy at our hatchery today. This long breeding research and testing program has just one purpose—to give you a bird that will help you make the most profit from your poultry program. Stop in soon and let us give you the complete story on what Ames In-Cross birds can do for you.

Goldfus

Hatcheries, Inc.

NEW HOLLAND Ph. EL 4-6811

When working WEIGHT and POWER count



This is the tractor for you

More than 50 hp—gasoline or diesel... TRACTION BOOSTER system for traction equal to a 7,500-lb tractor... Power Director that lets you Quick-Shift on-the-go to reduce ground speed, increase pull power... big, new matching implements that let you work big acreage faster. The D-17—

- PLOWS... with four or five 14-inch bottoms
- DISCS... with a 15-foot-wide tandem disc
- CULTIVATES... with 4-rev, swing-in type cultivator
- DRILLS... up to 75 acres a day.

Telephone... or stop in. Ask about the new D-17 Tractor and big new implements.

TRACTION BOOSTER is an Allis-Chalmers trademark

ALLIS-CHALMERS
SALES AND SERVICE

- | | |
|--|--|
| Mann & Grumelli Farm Serv.
Quarryville, Pa. | R. S. Weaver
Stevens, Pa. |
| L. H. Brubaker
Lancaster, Pa. | Nissley Farm Service
Washington Boro, Pa. |
| Snavelys Farm Service
New Holland, Pa. | L. H. Brubaker
Lititz, Pa. |
| N. G. Myers & Son
Rheems, Pa. | |