



GOVERNOR George M. Leader candles Pennsylvania eggs to determine interior quality. Looking on is Pennsylvania Poultry Queen Margaret McPherson of New Park, York County, who helped the gov-

ernor kick-off Pennsylvania's annual March Egg Month. During the month the poultry queen will be kept busy with personal appearances throughout the state.

## Gov. Leader Praises Poultrymen In Egg Month Kick-Off Statement

Never in the history of Pennsylvania egg marketing have housewives and consumers of eggs been in position to buy this wholesome food with such confidence as now, Gov. George M. Leader said Friday.

Urging State-wide observance of March Egg Month, the Governor cited the recent adoption of

an egg certification plan for the Commonwealth, revision of official egg standards, and expansion of the egg inspection staff in the carry out enforcement practices.

"Today the consumer of eggs can buy in confidence because of this up grading of our egg marketing program," he said.

"Our Pennsylvania farmers are providing the best possible quality eggs and must be congratulated for following recommended procedures of our county agricultural agents and extension specialists of the Pennsylvania State University in providing consumers with quality products.

"Pennsylvania is a great agricultural State and has a widely accepted reputation in the poultry industry. We rank fourth in the Nation in the production of eggs, but second in the value of eggs sold. Our entire poultry industry brings in 25 per cent of all Pennsylvania farm cash income.

"Our first 'Certified by Pennsylvania' eggs will be sold during March Egg Month. Seven egg distributing firms marketing one-half million eggs daily already are in this program which will be expanded State-Wide on a voluntary basis. This, of course, is another move to assure Pennsylvania consumers of eggs that they are buying the best quality eggs available anywhere."

### Queen's Busy

Following a visit with Governor George M. Leader on Friday, Miss Margaret McPherson State Poultry Queen, carried her Pennsylvania egg boosting story to Washington, D. C. on Monday.

In the Nation's capital the York County farm girl was guest of honor at a "double-yolker" shared egg luncheon in the House of Representatives dining room.

Eight dozen Pennsylvania double yoke eggs were gathered for the occasion by Mrs. Marion Granger of Dublin, Bucks County, co-chairman of the March Egg Month committee of the Pennsylvania Poultry Federation.

The double-yolkers were serv-

## Many Questions Arise When Buying Covering

How much it costs is only one question people ask when they are choosing a flooring covering for kitchen, laundry, bath or elsewhere in the house. They also ask about wear and appearance—how well the material resists wear, and how wear affects its good looks.

Tests on wear of several different kinds of floor coverings used in homes were made recently. Materials tested were Vinyl tiles, rubber tiles, Vinyl asbestos, linoleums, linotiles, cork and asphalt tiles.

Vinyl tiles and rubber tiles proved most resistant to wear, asphalt tiles least resistant.

The maintenance advised by manufacturers of floor coverings usually includes waxing and a

method of cleaning off old wax before applying a new coat. The study showed that such maintenance helped keep up the appearance of all the floor coverings, but it helped only the linoleums and the cork tiles resist wear.

Dark, solid color in most floor coverings show wear the most. The exception was rubber tile. Dark colored rubber tile changed in appearance less than lighter colors.

Floor coverings in farm homes often are subject to extra heavy wear because sand or other soil is brought in on heavy work shoes. The tests showed that a wet or damp abrasive caused faster wear than a dry abrasive on all floor coverings except cork. Cork wore down faster when the abrasive was dry.

ed to the 40 agricultural area members of the House and Senate who participated. Host for the occasion was Rep. Hubert B. Scudder of California who was inducted by Mrs. Granger into membership in the nationwide "Good Egg Club" along with House Speaker Sam Rayburn and House Minority Leader Joseph W. Martin.

As guest of 400 Philadelphia retail grocers the Pennsylvania Poultry Queen on Monday night was assured of cooperation in the featuring of Pennsylvania quality eggs in stores of that city during the month of March.

After her test at University Park Miss McPherson and Mrs. Granger head for Scranton to attend a Chamber of Commerce luncheon on Thursday and next Wednesday will participate in a press-radio-TV luncheon in Pittsburgh. E. J. Lawless, Jr., State Department of Agriculture, March Egg Month co-chairman, will attend the Pittsburgh event.

## CHAIN SAW SERVICE CENTER

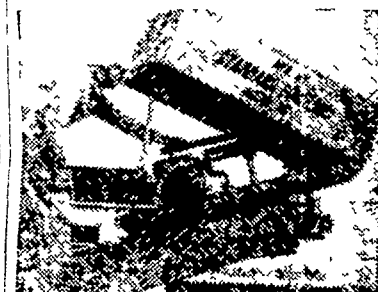
New & Used

SNAVELY'S Farm Service

New Holland EL 4-2214

STANDARD Equipment, Inc. ANNOUNCES ITS **16%** SPRING DISCOUNT SALE on ALL-NEW BARN CLEANER EASY-ALL COMFORT STALLS

SALE CLOSES MAR. 31, 1958



Ben S. Beiler

RONKS, PA. BOX 16

For More Information Write Today.

## CONESTOGA EMERGENCY FUND

R. D. #6 — Lancaster, Pa. Telephone EXpress 7-6464

Pays Death Benefit \$1,000.00

Assessment per death \$1.10 per subscriber Enrollment period ends April 1, 1958

Prior to April 1st all persons in good health between the ages of 15 and 68 for men or 70 for women are invited to join.

HOW TO ENROLL — Send this ad with your name, address and age to CONESTOGA EMERGENCY FUND, R. D. #6, Lancaster, Pa. Complete information and application cards will be sent to you.

ACT TODAY

DON'T LET YOUR FAMILY REGRET YOUR DELAY

## IT'S NO ACCIDENT

that in the 1957 official Lancaster County, Pa., Extension Tests

FUNK G-144

led all other hybrid corns

with 75.5 bushels per acre

(Average of all hybrids entered was 66.78 bu.)

See Your Hoffman Salesman or Phone Landisville, PA. TW 8-3421 For Better-Yielding Seeds For All Your Farm Crops



A.H. Hoffman Seeds, Inc. Landisville, Penna.

who's really BEST in the big test



\*Extended 600 days instead of 500 days makes this Utah Random Sample a real endurance test.

In this second intermountain random sample test: HONEGGER LAYERS Produced on per pullet housed basis

263.7 eggs ... and \$4.67 Profit per bird or 81c more income than the average of all other entries.

- Ranked 1st in % AA and A grades— (97.3% of all eggs were AA or A)
- Ranked 1st in least % checks. (Only 1.4% of all eggs laid were checks)
- Ranked 1st in least % spots and broken. (Only 8% of all eggs laid contained blood or meat spots or were broken)

- Ranked 2nd in % large eggs. (76.8% of all eggs laid were large)
- Ranked 2nd in feed efficiency. (Almost 10% better than the average of all entries)
- Ranked 2nd in age at sexual maturity. (In 50% production at 167 days of age)

On the basis of two-year averages at Utah, HONEGGER LAYERS were BEST with \$4.10 profit above feed and chick cost per pullet housed.

Compare, and you will buy Honegger Layers for the best year-in and year-out performance.

## WINDLES HATCHERY

COCHRANVILLE, PA.

Atglen LY 35941