

AUCTIONEER Paul Martin is shown here working hard on a bid at the Swine Producers sale. A total of 35 gilts of all breeds were sold for an average of \$108. Nine registered fall boars were also sold. (LF Photo)

## York, Lebanon Counties Certified Bang's Free; 3 Counties Remain

Pennsylvania moved two counties closer to realizing a 25-year dream in freeing the state of costly bovine brucellosis, the State Department of Agriculture announced Thursday.

Certification in meeting minimum Federal disease infection requirements was received by the Department for York and Lebanon Counties to bring to 64 the number of "free" counties. Only Cumberland, Bradford and Lancaster Counties remain to be certified.

Dr. Howard A. Milo, director of the State Bureau of Animal Industry, said the first brucellosis tests were made on cattle in Pennsylvania in 1934 through the aid

of the county agricultural extension agents. Department and cooperating veterinarians since January 1955 certification has been attained for 33 counties.

Federal certification of York County was approved when the 33,941 head of dairy and beef breeding cattle tested showed on infection of 47 one-thousandths of one per cent. There were only 16 reactors in the entire county. The herd infection was 22 hundredths of one per cent. Cattle infection cannot exceed one per cent and herd infection must be below five per cent. Testing was first begun in York County in 1942.

In Lebanon County, 18,606

head of cattle were tested and 77 reactors were discovered. This is 38 hundredths of one per cent of the total cattle tested. The 32 reacting herds were 2.9 per cent of the total number in the county. Testing began in Lebanon County in 1957.

The State Department of Agriculture anticipates receiving certification from the U. S. Department of Agriculture by mid-March for the three counties still uncertified. Pennsylvania is expected to become the 10th state in the nation certified brucellosis-free.

### HOUSEHOLD HINTS

An ordinary 2-inch paint brush is handy for dusting booktops, carvings, window sills, and the like.

Quick-cooking rolled oats are made by cutting each kernel in several pieces, then rolling each into several thin flakes.

### Lancaster Markets

(Continued from page 2)

150 lower than last Wednesday's storm market. Receipts the largest for a Monday in several years. Sows scarce all week prices poorly tested. Bulk barrows and gilts mixed U S 1, 2 and 3, 190-230 lbs. in Wednesday's trade \$21.25-21.50 a few No 1 and 2, \$22.22-50. Small lots 160-180 lbs. mixed grade \$20.50-21. A few sows 300-550 lbs mixed grade \$15.50-19.

SHEEP 331, week ago 75. Slaughter lambs about steady with last Wednesday. Supply mainly utility and good grades including a few low choice. Bulk utility and good wooled slaughter lambs \$19.50-25, a few low choice to \$26.50, culls down to \$16.

### CLASSIFIED ADS

PAY

### FARMERS!

Check your sprayer needs now. We have all sizes and types in stock. Also used pumps and sprayers of various sizes.

Lester A. Singer

RONKS, PA.

Phone Strasburg OV 7-3226

Your Myers Dealer who specializes in Sprayer Sales and Service.

### Cut Feed Costs!

Now you can MEASURE, MIX and GRIND your FEED — AUTOMATICALLY with a single unit — The ELECTRIC "MIX-MILL"

Makes feed for 4000 Laying Hens or 60 Cows in an hour, for 20c a ton.



For information and free demonstration on your farm, Call or Write Today.

Xtra Factors  
Products Co.

Box 126, Ephrata, Penna.  
Phone: REpublic 3-2437

## More beef at less cost!

### RED ROSE 30% Cattle Supplement

with miracle S.B.L.\*



\*S.B.L. is the Red Rose abbreviation for Stilbestrol—the wonder beef-building additive that boosts beef gains over 35%! Your cattle can gain an extra 1/2 to 3/4 pounds per day—yet the cost of gain is cut from 2 to 4 cents per pound. For faster, cheaper gains... for more beef profits—get complete, ready-to-feed, Red Rose 30% Cattle Supplement with miracle S.B.L.!

### Red Rose 30% Cattle Supplement with S.B.L.\*

\*S.B.L. is the Red Rose abbreviation for Stilbestrol—the wonder beef-building additive that boosts gains over 35%. Complete, ready to feed in supplement form, S.B.L. means faster, cheaper gains—more beef profit than ever before!



#### MOUNTVILLE FEED SERVICE

R.D.2 Columbia, Pa.

#### LEROY GEIB

R.D.2 Manheim, Pa.

#### FAIRVIEW ROLLER MILLS

R.D.1 Narvon, Pa.

#### I. B. GRAYBILL & SON

Refton, Pa.

#### JOHN H. BONHOLTZER

R.D.4 Lancaster, Pa.

#### SNADER'S MILL

R.D.1 Stevens, Pa.

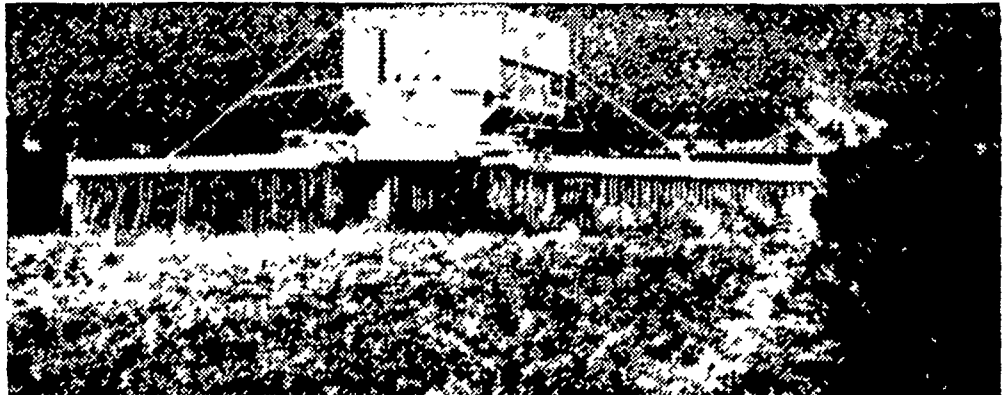
#### JOSEPH M. GOOD & SON

R.D.1 Bird-in-Hand, Pa.

#### WALTER & JACKSON, INC.

Christiana, Pa.

Order Now for  
Spring Delivery



Note the equal distribution by our type of spreader



We have modern spreaders  
to give you fast service

Ivan M. Martin, Inc., Blue Ball, Pa.

Telephones: New Holland ELgin 4-2112  
Terre Hill Hillcrest 5-3455