

Vegetable Growers Focus Attention On Growing Use of Irrigation

Some 175 county vegetable growers heard the pros and cons of irrigation discussed Tuesday at a meeting held at the Guernsey Breeders Sales Pavilion.

Amos H. Funk, R1 Millersville, chairman of a panel discussion on the subject, said that irrigation is enjoying a tremendous gain throughout the nation. He cited figures showing that since 1950 the use of irrigation in Lancaster County has grown by some 771 per cent. The total acres under irrigation now, he said, amount to 3,342 as compared to 433 in 1950.

Funk pointed out further that in Missouri the use of irrigation gained 440 per cent in four years and that in Virginia 110 new systems were added in six months.

From 1949 to 1954 farmers in Ohio went from 5,000 to 25,000 acres under irrigation while the acreage irrigated during the same time in Tennessee zoomed from 1,000 acres to 22,000 acres.

The East still lags far behind the West in total acres, he noted. While 145,000 acres are irrigated

in the 25 Eastern states, the 11 Western states irrigate a staggering 20,000,000 acres.

The meeting was also the scene of several presentations of awards to growers with high yields.

John Ewell, New Holland, and Cloyd Wenger, R5 Lancaster, each were cited for lima bean production. Ewell raised 2,400 pounds an acre and Wenger showed a total of 2,100 pounds to the acre.

Named master tomato grower for the second time in three years was Clarence H. Harnish, R7 Lancaster. He made a record of 24 3/4 tons of tomatoes an acre without benefit of supplemental water. In 1955 he made a record yield of 24 8/10 tons to the acre.

Jay Garber, R6 Lancaster, had the top yield of peas, producing 2,767 pounds to the acre. Second was David Bauman, Lititz, with a yield of 2,330 pounds an acre.

Harnish said that as many as 12 tons of tomatoes ripened at one time in his 93 acre field during the peak of the season. He also maintains a 30 cow Guernsey herd.



DISCUSSING THE EFFECTS of irrigation and some of their findings was this panel at the Vegetable Growers meeting Tuesday. They are, from left, the Rev. Emory Herr, Ronks; Jacob Glick, Smoke-

town; Omar Zook, Manatwny; Amos H. Funk, Millersville; Robert Fletcher, Penn State; Richard Kreider, R1 Manheim; Harry Sloat, Lancaster; and Jay Hodecker, R3 Lancaster. (LF Photo)

Grand Champion Pen of Lambs Bring David Lapp Price of \$1.25 a Pound

(Continued from page 1) Economy Meat Market, \$1.25; Mary K. Keene, Southdowns, 294, Medford's Inc., 40 cents; Mary Ann Hess, Hampshires, 363, S. Bonacurso, 25 cents, 3 Darwin Bopd. Shropshires, 378, Seachrist

Bro's, 28 cents; Janet Gible, Shropshires, 335, A & B, 2 cents; Harold Sangrey, Hampshires, 400, Bonacurso; 23 1/2 cents, David Witmer, Cheviots, 282, Medford's 34 cents and Donald Wiggins, Shropshires, 318, A & B, 33 cents

Gives calves everything but mother love! BE - CO - NURSE



High Protein Milk Replacer

Be-Co-Nurse consists of more than 85% dried milk products. A 25 lb bag (reconstituted) replaces 250 lbs. of whole milk . . . saves you an average of 50% on liquid feed costs.

STAYS IN SUSPENSION

Be-Co-Nurse contains lecithin, an emulsifying agent. You'll like the way it stays in suspension so that the calf gets it all.

You'll like also the way calves grow on Be-Co-Nurse. One 25 lb bag brings the calf to 6 or 7 weeks in splendid condition for weaning. Beacon customers are enthusiastic about the rate of growth, comment that these calves have strong, clean bones and are free from excess fat.

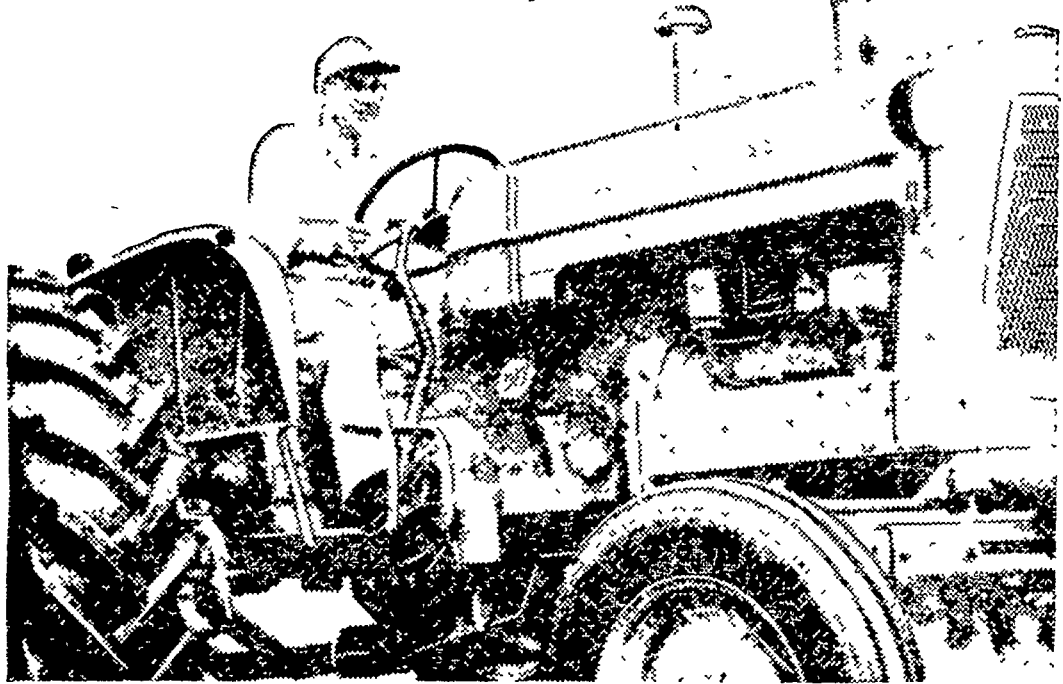
Be-Co-Nurse is economical, easy to feed. Plan now to give your calves this strong start toward a healthy, productive life.

Beacon Dealers and Beacon Advisors are located throughout Lancaster County. For the name of the one nearest to you please phone or write:

The Beacon Milling Company
Philadelphia and Carlisle Sts., York, Pa.
Telephone: York 8-2341.

BEACON

Here It Is!



POWERFUL NEW DYNAMIC D-17

BIG POWER

BIG WEIGHT

BIG FARMING

In the over 50-hp class

Approximate weights —

5280 lbs. gasoline to 5680 lbs. diesel

With TRACTION BOOSTER system, rear wheel traction equal to 7500-lb. tractor!

Complete line of big new implements to match

TRACTION BOOSTER is an Allis-Chalmers trademark

ALLIS-CHALMERS

SALES & SERVICE



You Saw It At The Farm Show — Ask Us For A Demonstration On Your Farm

Mann & Grumelli Farm Serv.
Quarryville, Pa.

R. S. Weaver
Stevens, Pa.

L. H. Brubaker
Lititz, Pa.

Snavelys Farm Service
New Holland, Pa.

N. G. Myers & Son
Rheems, Pa.

L. H. Brubaker
Lancaster, Pa.

Nissley Farm Service
Washington Boro, Pa.