

# Lancaster Farming

Vol. III. No. 10.

Quarryville (Lancaster County) Pa., Friday, Jan. 17, 1958

\$2 Per Year

## Tobacco Costs Must Be Cut Ranck Tells TGA

Milton Ranck, veteran tobacco buyer and handler from Lancaster, reminisced about the "good old days" in the tobacco business, spoke briefly about the "romance in tobacco" and noted the changes in public taste in cigar smoking in a talk Friday before the Lancaster County Tobacco Growers Assn.

But, in the opinion of many growers present, he failed to answer the question most troubling the grower today — how is tobacco to be handled and grown in the future?

Ranck did say that with the advent of chemistry in the tobacco industry the farm handling of leaf has changed and is due to change considerably in the future.

Getting into some of the changes, Ranck said that experimental work is now being done in machine cutting of tobacco, and the curing of leaf in much the same manner as hay is cured by forced air today.

One reason for this, Ranck said, is that costs must be cut in tobacco production while still achieving a maximum volume. "You can't afford to grow tobacco at today's low prices," he said, while still using the methods of yesterday."

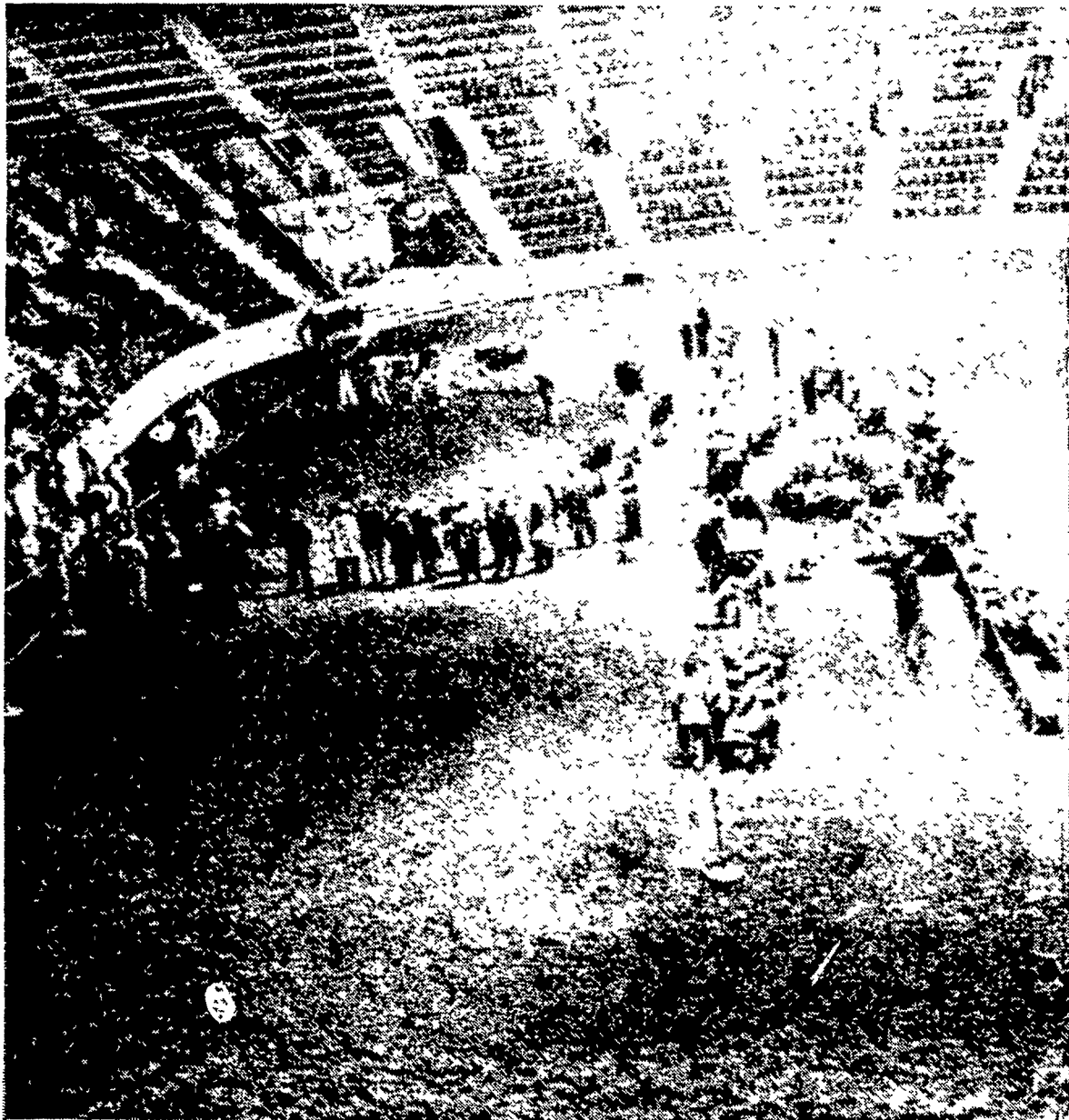
"We must invent methods of getting away from hand labor"

"Quality is getting to be a lesser factor with volume the thing to try for now" Ranck said. "If I were a young man growing tobacco I would try to grow as many pounds as possible," he said

When reminded that volume and quality tend to go hand in hand, he said that quality will never be discounted, but that volume is what will be most desired

Here specifically is what Ranck had to say about the handling of the 1958 crop: Watch moisture,

(Continued on page ten)



AN ENTIRE CLASS of Holstein heifers barely makes a good gathering in the huge main arena at the Farm Show Bldg. The effect of freezing roads and rain on attend-

ance Tuesday is also evident in this picture. The estimated crowd totalled only 75,000 compared to the record breaking 135,000 crowd Monday.

## Exchange May Merge to Form One Poultry Assn.

Lancaster County poultrymen will vote Jan 23 on a proposition to merge the Lancaster Poultry Exchange and the Lancaster County Poultry Assn at the annual meeting of the Exchange to be held at the Poultry Center.

In addition to the proposed merger, three directors are to be elected. The meeting will begin at 7 30 p m

The proposition reads as follows

"In the interests of greater working efficiency within the poultry industry and the elimination of duplication in their respective areas, the Directors of the Lancaster Poultry Exchange and the Directors of the Lancaster County Poultry Assn. recommend to their membership the following resolution:

"RESOLVED, That the Lancaster Poultry Exchange and the merge and retain the title of Lancaster County Poultry Assn. merge and retain the title of the latter, that the Exchange maintain its business name and continue to do business as at present, under the direction of a committee elected from and by the Directors of the Lancaster County Poultry Assn to whom it shall be responsible; that the new Board of Directors of the Lancaster County Poultry Assn. will be the present Directors of the Poultry Exchange plus the present Directors of the County Association; that all of the above stipulations be contingent upon the approval of this resolution by both the Lancaster Poultry Exchange and the Lancaster County Poultry Assn."

Speaker at the Exchange meeting will be the Rev. Nevin E. Smith of Hanover. His topic will be "Present-Day-People."

Nominees for the directorships are: Buyers and processors, Daniel K. Good, Columbia, now on the board; John Keesey, Fredericksburg; Willis McCarty, New Holland. Feed and Hatchery, Eugene Cassel, Landisville; Raymond Colvin, Lancaster; William Foreman, Lancaster; John Longenecker, Elphabethtown; Reynolds Monnich, Lancaster Producers, Harvey Brown, Birdsboro; Clair E. Fitz, York; Robert Harnish, Conestoga; Roy B. Herr, Lampeter, presently a board member; and Joseph Lesley, Oxford.

## 4-H Baby Beeves To Be Auctioned Today

The 4-H baby beeves, darlings of the livestock department at the Farm Show, were weighed Wednesday, judged yesterday, and sold over the auction block today to become prime steaks and roasts.

## Junior Chicken of Tomorrow Entry Blanks Now Available

Entry blanks for the state Junior Chicken of Tomorrow contest will be available at the Quarryville office of Lancaster Farming until the Feb. 1 entry deadline, according to Robert E. Best, Lancaster Farming editor and member of the Coatesville Region Committee.

The contest is open to any boy or girl between the ages of 10 and 20 or any junior agricultural group. The contestant must be sponsored by a Pennsylvania Poultry Federation member.

Entry blanks must be post-marked before midnight Feb. 1. They should be mailed to the Poultry Federation office, 1612 North Second St., Harrisburg.

Either 50 cockerels or 100 straight run chicks may be entered in the contest. They must be wingbanded by the hatchery and hatched from Feb. 27 to March 3. All chicks must be reared by the contestant on his premises.

Chickens will be dressed and judged May 5 in the regional contests and the state judging will be held May 6

Birds entered will be judged on confirmation, fleshing, condition and uniformity. No value is placed on fleshing. No hormones or drugs may be used.

The entry fee is \$2.

Floyd H. Moore, 780 Eden Rd., Lancaster, is the regional chairman. Other committee members are Henry E. Landis, Pennsylvania Farms Hatchery, Abbottstown; Stephen Fredericks, Producers Cooperative Exchange, Coatesville; Miles Moyer, Martin's Hatchery, Lancaster; William Skethway, Paradise.

Arthur K. Groff, R7 Lancaster; Daniel K. Good, R1 Columbia; F. W. Fisher Leacock, Roy H. Heckeluber, Biglerville; Victor Plastow, P. O. Bldg., Lancaster; Paul L. Martin, Morgantown Feed & Grain, Morgantown; Robert G. Thompson, Indian River Hatchery, Lancaster; John Kreps, Chester-Delaware Farm Bureau, West Chester.

Clyde Jackson Court House Annex, West Chester; Lowell Blass, 524 North 26th St., Reading; Fred Attinger, Court House, Gettysburg; Ernest O. Horn Jr, D. E. Horn & Co., York, Charles Burkhardt, Miller & Bushong Inc., Rohrerstown; Best; Thomas Malin, 106 South George St., York; and Dale Anderson, Hesperheide & Thompson, York.

## 13 County Women Win Prizes In Home-Ec Open Classes

Eight Lancaster County women placed in the open classes of the home improvement division at the Farm Show.

Winners were: Class 81, table or chair mat, Mrs. William S. Longenecker, R2, Mount Joy, fourth place; Class 82b, floor rug, Mrs. Elva Farmer, 215 Lebanon Rd., Manheim, second place, Class 82c, floor rug Mrs. Farmer, second place.

Class 83b, floor rug, Mrs. Longenecker, first place; Class 83c, floor rug, Mrs. Longenecker; Class 84, floor rug, Mrs. Longenecker, first place; Class 86,

floor rug, Miss Ruth Shearer, R2, Mount Joy, fourth place; Mrs. Edna Shearer, R2 Mount Joy, fifth place.

Five county women placed in the open classes for clothing. The only first place went to Miss Norma Siegler, Lancaster, for a pleated wool skirt. Miss Connie Nissley, Landisville, took a second place for a straight wool skirt

Other winners were Miss Mary Jane Hill, Lititz, who placed second with a dress and jacket; Miss Miriam Hershey, Quarryville, and Miss Arlene Fry, Landisville, who placed third and fifth respectively with their entries of dressy suits.

## Now Is The Time . . .

By MAX SMITH  
County Agricultural Agent



Max Smith

hable. Many times a bargain from a stranger results in a very expensive experience.

TO IMPROVE FARM WOODLOT — The winter and spring months are best to cut out undesirable trees in the woodlot and to give good trees a better chance. A number of woodlots in this area are in need of thinning and improving. Large trees may be cut for lumber with a ready demand. Extensive Service publications on this subject are available.

TO APPLY DORMANT BRUSH SPRAY—One of the recommended times to kill brush and small trees is in February and March when other trees and plants are dormant. Mixtures of 2, 4,5 T and fuel oil may be sprayed or sprinkled on tree trunks or clumps of bushes or briars for a chemical treatment. On trees over four inches in diameter it is recommended that a hatchet or axe be used to cut a nick into the tree and around the circumference of the trunk; the spray is then applied liberally into this cut.

TO PLAN FOR SPRING TREE PLANTING — Now is the time to plan and order the evergreen or forest trees that you want to plant this spring. March or April is planting time and many nurseries cannot meet the demand. Trees for idle land, Christmas trees, erosion control, wind-breaks, or other ornamental purposes should be ordered.

TO USE CAUTION WITH PURCHASES — Southeastern Pennsylvania with its dense farm population is fertile ground for all kinds of salesman and sales organizations. Farmers are urged to be careful about buying from strangers or from concerns with unknown reputation; it is not good business to pay for an item before delivery unless you are certain the concern is reliable.