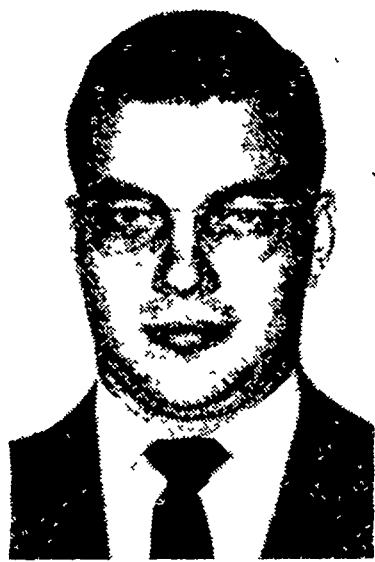


Three Agriculture Students Receive PP&L Scholarships at Penn State



Edward L. Schwar



Warren C. Heinly



Glenn A. Shirk

LANCASTER FARMING
CLASSIFIED ADS
PAY
Phone STerling 6-2132

This year get
**LARGE SIZE
EARLY EGGS**



An outstanding characteristic of K-137 KimberCHIKS

As of January 1, 1956, K-137 Kimberchiks led in early egg size to all three official random sample tests in which they were entered—California, Missouri, and Utah. Since large eggs are often worth 100% more than small, and 35-50% more than medium, this characteristic of the K-137 can make a great difference in income during the pullet year.

The K-137 is also noted for its good egg quality, both shell and interior. The high percentage of firm albumen results in more AA quality eggs.

The K-137 has good livability... 93.4% to about 18 months in the three official tests in which they were entered last year.

We invite you to compare the performance of this outstanding stock under your own management.

16 Page Booklet FREE
Please ask for this booklet describing the broad breeding program conducted by Kimber Farms, Inc. and giving more information about the K-137.

Longenecker's Hatchery

1110 South Market St.
Elizabethtown, Pa.



Three young men from the Lancaster area who are students in the College of Agriculture at Pennsylvania State University are among the 12 recipients of Pennsylvania Power & Light Company Agricultural Scholarships. It was announced by Charles Oakes, PP&L president. The local students are Warren C. Heinly, 21 East James St, Lancaster; Glenn A. Shirk, R1, Quarryville; and Edward L. Schwar, 56 South Pearl St., Lancaster.

PP&L awards agricultural scholarships annually to three students in each of the undergraduate classes in the College of Agriculture who are residents of the utility's service area. Since 1947 when the program was initiated, 24 recipients of these scholarships have been graduated from the university. These graduates have moved into a number of important fields including agricultural extension, vocational agriculture, forestry and farm management.

In announcing the grantees of this year's program, Oakes said they were made on the basis of character, scholarship and promise of usefulness in the field of agriculture. He pointed out that PP&L's scholarship assistance to young people studying agriculture was built around a recognition of the importance of agriculture to the economy of the state and with the knowledge that continued development of the area agricultural potential will be enhanced by the development of knowledge in all of agriculture's related fields.

Warren Heinly, a graduate of Lancaster High School, is a senior in the general agricultural curriculum. He has been on the Dean's List, was a member of the Student Council for the College of Agriculture and is the recipient of the Distinguished Military Student Award. He is a member of the Society of American Military Engineers and the Pershing Rifles. This past summer he attended Reserve Officer Training Corps camp at Ft. Meade, Md.

Glenn A. Shirk, a graduate of South Lancaster County Joint High School, is a junior in the dairy science curriculum. He is active in the Dairy Science Club

of which he is publicity chairman. He served on the committee welcoming incoming freshmen this past fall, is house manager of Alpha Zeta fraternity and assistant manager for the 1958 Dairy Exposition. He lives on an 81-acre dairy farm.

Edward L. Schwar is a senior in the Landscape Architecture Curriculum. While at McCaskey High School he was captain of the swimming team and held a state championship in the 50-yard free style. At Penn State he is a member of the Landscape Society and served as treasurer. He holds membership in Pi Alpha Xi, honorary horticulture fraternity, and in Alpha Tau Omega, social fraternity.

The agricultural scholarship competition is one of two PP&L programs of educational assistance. The other phase of educational assistance now in its fifth year, provides six scholarships each year to high school seniors from the utility's service area for study at any of 15 Central Eastern Pennsylvania colleges and universities.

National banks receive charters from the Federal Government. State banks are incorporated under state laws.

Trace Elements No Worry Here, PSU Work Finds

Preliminary reports of a survey of 61 counties support previous indications that Pennsylvania forage crops when fed with concentrate feeds supply enough of the so-called "trace elements" to fill usual requirements of well-fed farm animals. Work on this subject by C. E. French, C. B. Smith and others at the Agricultural Experiment Station at University Park is being continued.

The survey is being conducted by means of chemical analyses of samples of red clover and timothy, two good indicator plants common to the whole State and of the soils on which the samples were collected. The clover samples have been analyzed and the data are being published in Station Bulletin 624, now in press.

All plant samples were carefully collected to prevent contamination with soil which, although unpalatable, contains far higher percentages of several nutrient elements than plants.

When the timothy and soil samples have been analyzed and the mineral contents of the concentrates usually fed with forages have been taken into account, a

precise picture of the mineral needs of animals in various parts of Pennsylvania may be available, Dr. French states. A total of 365 red clover samples were analyzed.



Figures on your Settlement Sheets will convince you that premiums for "Large" over "Mediums" and "Small" make the BIG DIFFERENCE. For Big Eggs and many of them... Buy from a selected FRANCHISED hatchery. Ask for QUEEN circular.

JOHNSON'S HATCHERY
24 Orange St., Ephrata, Pa.

Ph REpublic 3-2980



Now...you may grow 320-pound calves in only 4 months

Purina Calf Chows are easily digested, highly palatable... practically eliminate nutritional scouring and death loss

Now you may raise 320-pound heifer calves in only 4 months' time.

In recent feeding work at Purina's Research Farm, 89 calves were fed exclusively on Purina's Nursing Chow-Calf Startena Program. At 4 months of age the Holstein heifers in this group averaged 320 pounds... a full 60 pounds heavier than is considered "good" for calves of that age. (Average as reported in Morrison's "Feeds and Feeding.")

And, these calves put on their vigorous, healthy growth for less than half the cost of whole milk feeding.

Simple... Easy... Cost-Cutting Purina's Calf Program takes advantage of the life stimulating powers of colostrum... It provides the extra vitamins, minerals, energy, and disease protection not found in whole milk.

How the Purina Calf Program Works:

Colostrum for the first 3 days. Gives your calf Nature's miraculous disease-resistance factors.

This storehouse of energy and antibodies has no substitute.

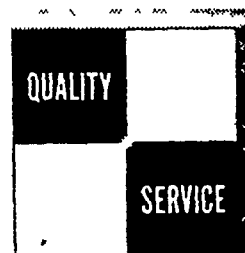
Nursing Chow (Purina) for the next 30 days, plus Calf Startena. Gives calves minerals, vitamins, energy, and disease protection not found in whole milk.

Calf Startena (Purina) for the next 3 months. It is during this "fast growth" period that Purina-fed calves make gains up to triple their birth weight, build strong bones and smooth coats. At 4 months, they're big, rugged heifers already halfway to breeding weight.

Practical Dairymen Agree

Practical dairymen throughout the country have often stated: "My calves really go for these Purina Calf Chows." "...they have proved easily digestible." "Nutritional scouring and death loss have been practically eliminated."

Ask us about the facts on Nursing Chow and Calf Startena. Order some. Aim to grow big, husky calves in only 4 months on your farm.



FEED PURINA... YOU CAN DEPEND ON THE CHECKERBOARD

Wenger Bros.
Rheims

Warren Sickman
Pequea

B. F. Adams
Bird-in-Hand

John J. Hess II
Intercourse—New Providence

S. H. Hiestand
Salunga

Snader's Mill
Mt. Airy

John B. Kurtz
Ephrata

James High
Gordonville

John J. Hess
Kinzers — Vintage

Whiteside & Weicksel
Kirkwood

Blend & McGinnis
Atglen

