

Bottom Drops Out of Broiler Market As Producers 'No Sale' 100,000

LANCASTER — The bottom dropped out of the broiler market as producers declined to sell more than 100,000 birds at the Oct. 31 sale at the Lancaster Poultry Exchange. The average price for the 62,500 broilers that did sell was 16.43 cents.

The price range for the birds was 16 1/4 to 17 cents. A year ago it was about the same story with the average being 16.08 cents, the year's low for 211,650 broilers. However the bottom price that producers took last year went down to 15 1/4 cents.

At the recent sale a lot of 2,000 red Vantress birds brought 19 1/2 cents, capettes, 6,700 in all, ranged from 21 to 25 1/4 cents; two lots of turkeys sold for 26 1/4 cents and 490 Leghorn fowl moved at 12 1/4 cents.

Here is the Oct. 31 sale by lot number, seller with grower in

parenthesis, number and breed, age in weeks and days, buyer and price per pound.

1. E. M. Martin, 2,000 White Rock, 9-6, no sale, 16 cents bid. 2. E. M. Martin, 2,000 White Rock and White Vantress, 9-6, no sale, 16 1/4 cents bid. 3. E. M. Martin, 1,000 White Vantress, 9-6, Daniel K. Good, 16 1/4 cents. 4. E. M. Martin, 400 White Rock, 9-6, no sale, 16 1/2 cents bid. 5. J. J. Hess II (A. E. Miller), 1,600 Martin's New Whites, 11, Roy E. Ream, 16 1/4 cents.

6. S. M. Fisher, 4,000 Indian Rivers, 10-2, no sale, 16 1/4 cents bid. 7. Eshelman's Red Rose, 3,600 White Vantress, 10, College Hill Poultry, 16 cents. 8. Eshelman's Red Rose, 3,600 White Vantress, 10, College Hill, 16 1/4 cents. 9. Eshelman's Red Rose, 7,000 White Vantress, 10, no sale, 16 1/2 cents bid. 10. Master Feed & Grain (Evan S. Kohl), 2,000 Sil-

ver Cross capettes, 14 1/2, Starr Poultry, 21 cents.

11. J. J. Hess II (A. E. Miller), 1,600 White Vantress capettes, 14 1/2, Starr, 23 1/4 cents. 12. Master (Kohl), 1,250 White Vantress capettes, 14 1/2, Carl B. Risser, 24 1/4 cents. 13. R. B. Martin, 5,000 Martin's New Whites, 9-6, College Hill, 16 1/2 cents. 14. R. B. Martin, 5,000 White Vantress, 9-6, College Hill, 16 1/2 cents. 15. J. L. Harnish, 8,000 White Vantress, 10, no sale, 16 1/4 cents bid.

16. J. L. Harnish, 8,000 White Vantress, 10, no sale, 16 1/4 cents bid. 17. D. E. Horn & Co. (E. E. Myers), 5,000 White Vantress, 9-3, Victor F. Weaver Inc., 16 1/4 cents. 18. Horn (Myers), 5,000 White Vantress, 9-3, Victor F. Weaver Inc., 16 1/4 cents. 19. Floyd Raffensberger, 2,400 Indian Rivers, 10, Victor F. Weaver Inc., 16 cents. 20. Floyd Raffensberger, 2,400 Indian River Whites, 10, Meader's Poultry, 16 1/2 cents.

21. Robert Rettew, 1,000 White Vantress, 10-1, no sale, 16 1/4 cents bid. 22. Mary E. Porry, 900 White Vantress, 10-2, John E. Rettinger, 17 cents. 23. Arthur Stoner, 1,375 White Vantress capettes, 13, no sale, 20 1/2 cents bid. 24. Miller & Bushong (H. L. Brandt), 900 White Vantress, 9-6, no sale, 15 1/4 cents bid. 25. M&B (Arthur Spickler), 7,000 White Vantress, 9-2, D. K. Good, 16 1/2 cents.

26. M&B (J. A. Stoltzfus), 2,600 Indian Rivers, 9-6, no sale, 16 cents bid. 27. M&B (Clair Bomberger), 3,000 Indian Rivers, 10, no sale, 16 1/2 cents bid. 28. Red Rose Research Center, 400 Leghorn fowl, 21 months, Daniel K. Good, 12 1/4 cents. 29. Red Rose Research Center, 300 White Vantress pullets, 14-2, no sale, 18 1/4 cents bid. 30. Wenger's (Daniel Lehman), 800 White Vantress capettes, 15-6, no sale, 18 1/2 cents.

31. Wenger's (Daniel Lehman), 1,200 White Vantress capettes, 15-6, no sale, 19 cents bid. 32. Wenger's (Daniel Lehman), 2,000 White Vantress capettes, 15-6, no sale, 18 1/4 cents. 33. Ivan C. Martin, 2,000 Martin's New Whites, 9-5, John N. Thomas, 16 1/4 cents. 34. Raymond M. Weaver, 8,000 White Vantress, 9-1, no sale, 16 1/4 cents bid. 35. Raymond M. Weaver, 8,000 White Vantress, 9-1, College Hill, 16 1/4 cents.

36. Floyd Spahr, 500 White Vantress capettes, 14-2, no sale, 20 cents bid. 38. Ralph Day, 4,500 White Vantress, 9-2, no sale, 15 1/4 cents bid. 39. Ralph Day, 6,500 White Vantress, 9-2, no sale, 16 1/4 cents bid. 40. Ralph Day, 13,500 White Vantress, 9-2, no sale, 16 cents bid.

41. Ralph Day, 16,000 White Vantress, 9-2, no sale, 15 cents bid. 42. Horn & Co. (Wilson Fitz), 7,000 White Vantress, 9-3, College Hill, 16 1/4 cents. 43. Charles Boose, 500 Martin's New Whites, 12-2, no sale, 19 cents. 44. Charles Boose, 500 Martin's New Whites, 12-2, Walter C. Mellinger, 20 cents. 45. Glenn H. Herr (Jacob Fisher Jr.), 300 White Vantress capettes, 14, Walter B. Lehman, 25 1/4 cents.

46. Glenn H. Herr (Fisher), 150 White Vantress capettes, 14, Roy E. Ream, 25 cents. 47. Elam W. Weaver, 1,450 White Vantress, 9-6, no sale, 16 cents bid. 48. Elam W. Weaver, 1,450 White Vantress, 9-6, no sale, 16 1/2 cents bid. 49. Parke K. Herr, 1,000 White Vantress pullets, 10-2, no sale, 16 1/4 cents bid. 50. Luke Horst, 1,500 White Vantress, 9-6, no sale, 16 1/4 cents bid.

51. J. Lloyd Rohrer, 900 White Vantress, 10-5, no sale, 16 1/4 cents bid. 52. Elam Sensenich, 200 White Vantress capettes, 15-2, John N. Thomas, 23 1/4 cents. 53. Harvey M. Zimmerman, 400 Beltsville turkeys, 16, Starr Poultry, 26 1/4 cents. 54. Harry M. Zimmerman, 1,000 Beltsvilles, 16, Starr, 26 1/4 cents. 55. Morgantown Feed (David Smoker), 2,250 White Vantress, withdrawn prior to sale.

56. Morgantown Feed (Henry Schantz), 2,000 Red Vantress, 11, Walter C. Mellinger, 17 cents. 57. Morgantown (Schantz), 1,000 White Vantress, 11, H. W. Longacre, 16 1/4 cents. 58. Morgantown (Schantz), 2,000 Red Vantress, 10, Roy E. Ream, 19 1/2 cents.

Total deposits in 14,000 banks in the United States exceed \$200,000,000. In 1925, \$50,000,000 was on deposit in 28,000 banks.

Slaughter Cattle Steady, Feeders Unchanged at Lancaster Yards

By DAVID S. LORENSEN
Federal-State Market News Service

LANCASTER, Nov. 6 — CATTLE: 4,257, week ago 4,703. Slaughter steers and heifers steady to 25 cents lower than last Wednesday, most decline on shortfed steers, low choice and below, averaging over 1,050 lbs.

Most Cattle Gain Slightly; Hogs Slow at Chicago

CHICAGO, Nov. 5 — Estimated salable receipts: Cattle, 5,500; Calves, 200; Hogs, 13,000; Sheep, 2,500.

CATTLE: Slaughter steers active, 1250 lbs. grading low-choice and below slow; heifers steady to strong, spots 25 higher; cows 25 higher, advance on canners and cutters; bulls steady; vealers and stockers and feeders steady. Choice steers 24.00-25.25, high-choice and prime slaughter steers 25.50-27.25, good 21.00-23.00, mixed good and low-choice 23.25-23.75; half a dozen loads mixed choice and prime over 900 lb. heifers 24.75 and 25.00, good to average-choice 21.00-24.35; utility and commercial cows 13.00-16.00, bulk canners and cutters 11.00-13.50; utility and commercial bulls 15.75-18.00, canners and cutter bulls 13.00-15.50; good and choice vealers 24.00-27.00.

HOGS: Slow, 25-50 lower on barrows and gilts; sows steady over 350 lbs., few lightweights weak to 25 lower; 200-270 lbs. 16.35-16.65, 210-240 lbs. 16.25, 195-220 lbs. 16.75-17.00, 300 head at 17.00, 27 head Lot No. 1 195 lbs. 17.25; 300-525 lb. sows 14.75-15.75.

SHEEP: Active, lambs and slaughter ewes steady; good and choice woolled lambs 98-104 lbs. 21.00-22.00, cull to low-good 13.00-

Cows strong to 25 cents higher than last Wednesday; bulls about steady. Stockers and feeders fully steady with a week ago. Receipts comprised 45 per cent stockers and feeders and 20 per cent cows and bulls.

Bulk good and choice fed steers 1,000-1,300 lbs. \$22.50-25.50, a few lots mixed high choice and prime \$25.75. A load 1,300 lb. prime steers \$27, short load prime 970 lb. weights also \$27. A few lots standard and low good shortfed and grass steers \$19.50-22. Bulk cutter and utility cows \$11.14-75, strongweight cutters to \$15.50, canners mostly \$9.75-10.75. Utility and commercial bulls mostly \$19.50 down.

Bulk medium and good stocker and feeder steers and light yearlings 575-985 lbs. \$19-21.50, several lots and loads good 600-850 lb. weights \$22-23. Load choice 400 lb. stock steer calves 27.

CALVES: 986, week ago 815. Vealers fully steady. Bulk good and choice vealers 140-210 lbs. \$23.50-29.50, prime up to \$33, utility and standard \$15.50-23.50.

HOGS: 1,300 week ago 1,668. Barrows and gilts mostly steady with last week's close. Sows steady to weak. Bulk barrows and gilts 200-240 lbs. mixed US 1-3, mostly No. 1 and 2, in Wednesday's trade \$18-18.25, several small lots No. 1 and 2, 200-230 lbs. \$18.50-19. Sows mixed US 1-3, 270-550 lbs. \$13.50-17.50.

SHEEP: 454, week ago 276. Slaughter lambs mostly steady with last Wednesday. Bulk good and choice woolled slaughter lambs \$21.50-24, utility and low good grades \$16-21.

20.00, good to prime 92-99 lb. shorn lambs with No. 1 and 2 pelts 19.25-21.75; cull to choice shorn slaughter ewes 4.50-7.50.

ATTENTION POULTRYMEN!

Would you like to have some broilers ready just after the New Year . . . when there will be a demand for broilers again, at least, better than now!

We have 300 Vantress Cross about 3 weeks old, which will be just right after New Years. Place your order with us for your Spring or early Winter pullets! Compare our prices and our chicks . . . then you be the judge.

Available now — our regular strain — Cross and In-Cross Leghorn Rhode Island, Nedar New Hampshire and Ames-In-Cross Leghorn and Ames-In-Cross Rhode Island.

Call us for prices and compare them with others. Then place your order in time for our early order discount.

ALTMAN'S CASH FEED STORE

WILLIS H. WEAVER MANAGER

947 Harrisburg Ave. Phone Lanc. EX 4-7715

10¢ per hundred discount on half ton lots or more.

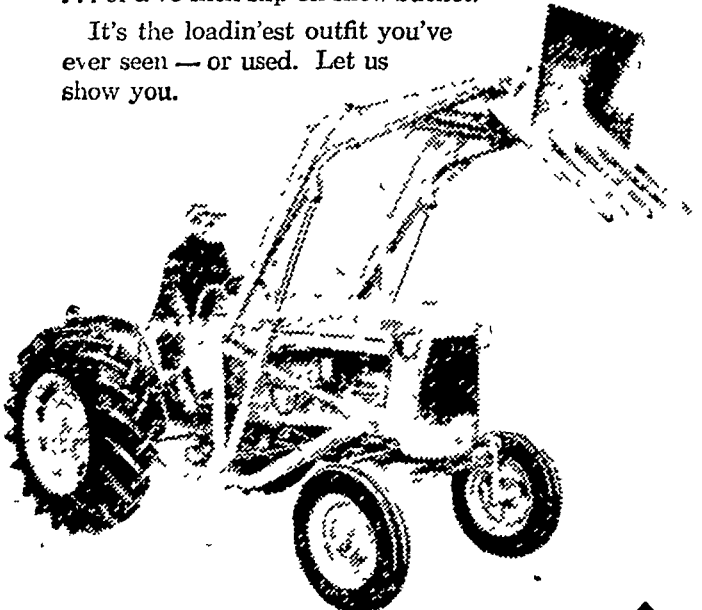
PRICES SUBJECT TO CHANGE — WE DELIVER

TEAMED for tops in power loading

Take a D-14 Tractor . . . low enough to step on and off . . . compact . . . easily handled . . . plus POWER DIRECTOR with oil-cushioned clutch action that permits on-the-go shifting — or easing ahead or back — while bucket moves up or down. You can operate at full engine speed for extra pushing power, quick hydraulic response; yet have easy control of the tractor.

Plus a No. 14 Farm Loader . . . tailor-made for the D-14 Tractor . . . with a 6-bushel combination bucket that lifts high for easy loading of trucks . . . or a 76-inch slip-on snow bucket.

It's the loadin'est outfit you've ever seen — or used. Let us show you.



ALLIS-CHALMERS 
SALES AND SERVICE

L. H. Brubaker
Lancaster, Pa.

N. G. Myers & Son
Rheims, Pa.

Mann & Grumelli Farm Serv.
Quarryville, Pa.

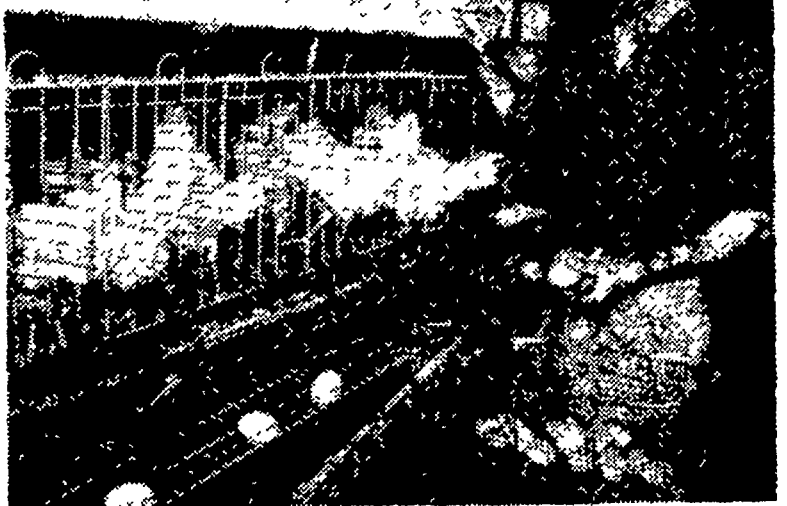
Snavelys Farm Service
New Holland, Pa.

Nissley Farm Service
Washington Boro, Pa.

L. H. Brubaker
Lititz, Pa.

R. S. Weaver
Stevens, Pa.

AIM FOR HIGH EGG PRODUCTION!



feed . . . Red ROSE CAGE LAYER

a complete laying ration

RED ROSE CAGE LAYER—
—is fortified with vitamins, minerals, protein and energy for body maintenance for increased palatability.

TRY IT—see us for feeding

VISIT THE RED ROSE RESEARCH
Road, R. D. 5, Lancaster, Pa.
(Pass) — and see cage layers

Buy your Red Rose Feed

MUSSER FARMS, INC.
R. D. 2, Columbia, Pa.

DAVID B. HURST
Bowmansville, Pa.

WEST WILLOW FARMERS
ASSOCIATION
West Willow, Pa.

BROW
Atg
A. L. HE
Quarryville