

Control measures used against the chicken mite are not effective against the northern fowl mite. Prompt veterinary diagnosis can determine which type of mite is infecting a flock and prescribe the most effective treatment before losses occur.



Looking For Results?

Try **WIRTHMORE**

**HI - ENER - G 16**

Here's what it will give you

- Greater returns over feed cost
- Good performance in any climate, in pens or cages
- Labor savings — easy to feed — a complete ration

Why not try it and check the results for yourself?



**Hiestand, Inc.**

Marietta

Ph. HAZel 6-9301

**LeRoy M. Sensenig**

Hinkletown

Ph. Ephrata REpublic 3-2009

**Clem E. Hooper**

Intercourse

Ph. SOuthfield 8-3431

## Wednesday New York Egg Market

By Urner-Barry

Nearby Whites

|                          |        |
|--------------------------|--------|
| Extra Fancy Heavyweights | 54     |
| Mediums                  | 38     |
| Pullets                  | 26½    |
| Peeweese                 | 20 -21 |

Nearby Browns

|                          |        |
|--------------------------|--------|
| Extra Fancy Heavyweights | 54     |
| Mediums                  | 37½ 38 |
| Pullets                  | 30½    |
| Peeweese                 | 20 -21 |

Midwestern Mixed

|                    |         |
|--------------------|---------|
| Fancy Heavyweights | 51½     |
| Mediums            | 35½-36  |
| Standards          | 37 -38½ |
| Checks             | 30 -31  |
| Pullets, 35#       | 26½     |
| Pullets, others    | 22 -25  |

NEW YORK, Oct 2 — Market firm with all grades clearing well including Mid West and Western. Light offerings of Midwest eggs is the principle strengthening factor.

### Weekly Egg Price Review

|                  | Sept. 26 | Sept. 27 | Sept. 30 | Oct. 1 |
|------------------|----------|----------|----------|--------|
| <b>NBW WHITE</b> |          |          |          |        |
| Ex Fcy Hywts     | 50       | 50       | 50       | 52     |
| Mediums          | 34       | 34       | 36       | 36½    |
| Pullets          | 25½      | 25½      | 25½      | 25½    |
| Peeweese         | 20       | 20       | 20       | 20     |
| <b>NBY BROWN</b> |          |          |          |        |
| Ex Fcy Hywts     | 50       | 50       | 50       | 52     |
| Mediums          | 34½      | 34½      | 37       | 37     |
| Pullets          | 30½      | 30½      | 30½      | 30½    |
| Peewess          | 20       | 20       | 20       | 20     |

### LIVE POULTRY

PHILADELPHIA OCT 2 — Market unsettled Receipts moderate on all classes Demand fair with major interest centered on fancy quality caponettes and pullets which were adequate Sales in most instances confined to fill in purchases Heavy hens sold in a range of 15-18 mostly to dressers at 15

Few caponnetted broilers sold at 23-24 cents Caponettes 5 lb and over white rocks 28 32 Fan quality red caponettes 21 but not clearing

Wholesale selling prices No 1 and fancy quality Broilers and fryers heavy type 3-4 lb 18-23 Pullets 4½ lb and over 30-33 Hens heavy type 15-18 light type 10-13 Old roosters 10-11 Ducks muscovy 20-25 Pekins 28 Turkeys Young hens 30-36 Young Toms 22-24.

A cattle brucellosis-free nation by 1960 is the goal of the National Brucellosis Committee Brucellosis in swine and sheep is next

### PHILADELPHIA EGGS

(BY USDA)

PHILADELPHIA, OCT 2 — Market firm Prices as much as 2½ cents higher Supplies of grade A large only about adequate for a fair to good demand Medium, while in moderate to liberal supply, were clearing much better with less accumulation reported Quality becoming a factor in many quarters Grade B's while in limited demand were fully ample

Prices to retailers in cartons (cents per doz)

Consumers Grades c U c Y . Grade A & US grade A large whites 62-65, mostly 62½-64; browns 62-65, mostly 62-64.

Grade A & US grade A medium, whites 43½-50½, mostly 45½-48½, brown 43-50, mostly 45-48

Grade B & US grade B large whites 55½-59, mostly 56-58, brown 55½-59, mostly 56-58 Receipts Oct. 1 3,300 CS

Lancaster Farming, Friday, Oct. 4, 1957—3

### PROCESSED POULTRY

PHILADELPHIA, OCT 2 — Processed poultry, ready-to-cook (ice packed) young chickens - unsettled, offerings while not excessive far exceeded a light and delatively dull demand

Prices paid delivered warehouse, Philadelphia (cents per lb)

Grade A & U S Grade A, 2-3 lb 28½ 32½, mostly 28½- 29½ Hens ready-to-cook (ice packed) Market steady and unchanging Offerings ample for a fair demand

Prices paid delivered warehouse, Philadelphia (cents per lb)

Grade A & U S Grade A 4-5½ lb 29½-32

Receipts Oct 1, included other than turkeys Md 34,000, Del, 78,000, N C 35,000 lbs

The incidence of mastitis seems to be higher in some cow families than others, veterinary authorities report

### REPROCESSED WOOL

Some fall garments may be labeled "reprocessed wool" Bernice Tharp, Penn State extension clothing specialist, says the wool fabrics have been woven or fitted but because of errors in weaving or through use of cuttings of a new fabric, the fabrics are unraveled, reduced to fiber, then spun and re woven

### GLYCOLOSE



LEGENDS OF FOLK MUSIC  
**FIRE PREVENTION WEEK**

THE TROUBLE WITH NERO WAS HE PLAYED THE FIDDLE WHEN HE SHOULD HAVE PLAYED THE HOSE -

Watch those campfires, won't you folks? Let's make this the safest year so far by going all out for Fire Prevention

USED SPECIAL!

Massey Harris 2 row Self-propelled Corn Picker.

**Cope & Weaver**

WILLOW ST.

Ph. Lanc. EX 3-2824

**1500 STARTED VANTRESS CROSS 9¢**

Reich Poultry Farm  
Marietta Ph HA 6-7123

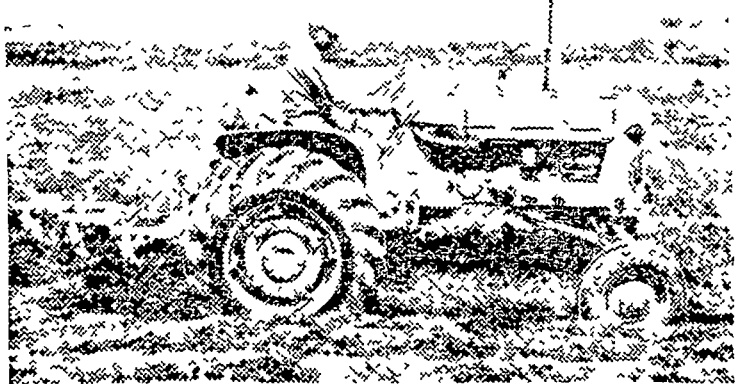
### LOANS

For any farm purpose Made the farmer's way

**LANCASTER PRODUCTION CREDIT ASS'N.**

141 N. Queen Street  
Lancaster, Pa.  
Ph. Lanc. EX 3-3921

### Why the New D-14...



### OUTPLOWS other 3-plow tractors—

- **POWER DIRECTOR** lets you shift between high and low range on-the-go (choice of 8 speeds ahead) . . . adjust plowing power and speed quickly and easily to changing field conditions.
- **TRACTION BOOSTER** system automatically increases traction, as needed . . . controls wheel slippage and saves fuel . . . keeps work moving.
- Fully enclosed hydraulic system has *one* lever to lift and lower plow . . . *another* lever to select range for **TRACTION BOOSTER** system.
- **POWER-CRATER** engine with advanced combustion chamber design develops full 3-plow power at 1650 rpm . . . gives peak performance on regular gasoline.
- Easy-ride seat smooths out bumps . . . reduces fatigue . . . increases operator's work capacity.

It all adds up to more acres plowed per day . . . in an easier way.

POWER CRATER and TRACTION BOOSTER are Allis-Chalmers trademarks

**ALLIS-CHALMERS**

SALES AND SERVICE



L. H. Brubaker  
Lancaster, Pa.

Nissley Farm Service  
Washington Boro, Pa.

Snavelys Farm Service  
New Holland, Pa.

Mann & Grumelli Farm Serv.  
Quarryville, Pa.

R. S. Weaver  
Stevens, Pa.

N. G. Myers & Son  
Rheems, Pa.

L. H. Brubaker  
Lititz, Pa.



Lancaster  
Manheim

Quarryville  
New Holland

## QUALITY FEEDS

"You Can Depend on"

F O R

**POULTRY - SWINE - LIVESTOCK**

Modern Bulk Delivery  
Saves  
Extra Dollars

Prompt and Courteous  
Delivery  
in Bags

It's Here!! **STOCK - GARD!!** For Steer Feeders

500 Grain (Terramycin) per ton for the CONTROL and PREVENTION of Shipping Fever.