

Broilers Continue Decline; Average 18.61 Cents At Lancaster Exchange

LANCASTER — In trend with the normal seasonal decline, broilers dropped to an average of 18.61 cents at the Sept. 19 auction at the Lancaster Poultry Exchange. The high was 20 cents and the low 18 cents.

A lot of 250 heavy fowl brought 17 cents; two lots of Leghorns brought 14½ and 14 cents; and the capette range was from 28½ to 30½ cents with 4,470 birds being sold.

Compared with the 124,700 broilers being sold last week, a year ago only 61,150 birds were offered with 57,100 broilers being sold. The price average was 20 cents with a range of from 18½ to 20½ cents.

Here is the Sept 19 sale by lot number, seller with grower in parenthesis, number and breed, age in weeks and days, buyer and price

1. Roy B. Martin, 2,100 Indian Rivers, 10, College Hill Poultry, 18½ cents 2. Roy B. Martin, 2,400 Indian River Whites, 9-3, College Hill, 18½ cents. 3. Charles G. Myer, 1,000 White Vantress, 11, Leola Poultry, 18½ cents 4. Mrs. Jacob Cramer, 600 Indian Rivers, 10, Harry H. Weaver, Jr, 18½ cents. 5. John Gehman, 350 Broad Breasted Bronze hens, 22, no sale, 27½ cents bid.

6. Christ A. Glick, 250 New Hampshire yearling fowl, College Hill, 17 cents 7. Thomas Stoltzfoos, 170 White Rock capettes, 16-2, Carl B. Risser, 29 cents. 8. Benj. F. Lapp Jr., 450 White Rock capettes, 13-6, Carl B. Risser, 28½ cents. 9. B. F. Lapp Jr., 375 White Rock capettes, 13-6, Carl B. Risser, 28½ cents 10. Richard Kling, 4,000

(Continued on page three)

500 STARTED CHICKS — 1 & 2 weeks old

Would you like to save a little money?
Order your feed direct from the car!

Trespass Notices	48c doz.	Horse Feed	\$3.85
B starter N. F. Z.	\$4.25	10% Hog Feed	3.70
Fine Chick	4.90	20% Hog Feed	4.45
Grower N. F. Z.	4.25	16% Dairy Feed	3.40
Scratch D. P.	3.75	Fitting Ration	3.50
Bluebird All Mash	3.95	Peat Moss	4.20
Corn	3.40	Stazdry	2.40

Special Chop for Steers, Hogs, Sheep and Heifers, \$3.30

ALTMAN'S CASH FEED STORE

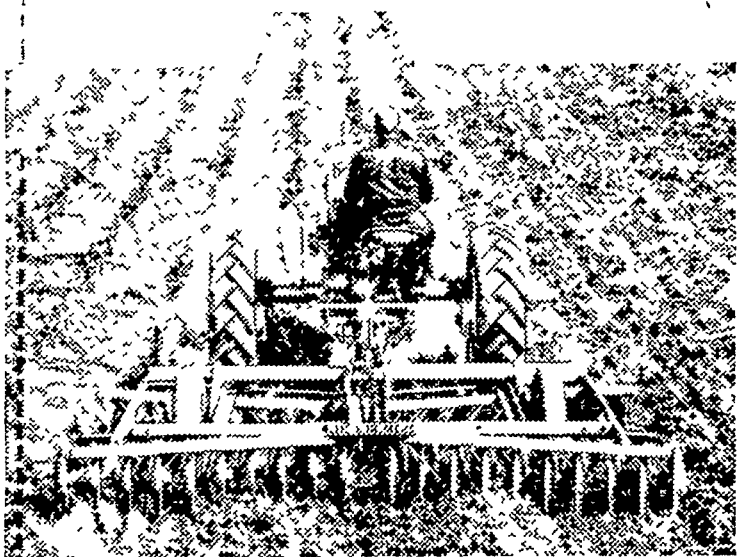
WILLIS H. WEAVER MANAGER

947 Harrisburg Ave. Phone Lanc. EX 4-7715

10c per hundred discount on half ton lots or more.

PRICES SUBJECT TO CHANGE — WE DELIVER

4 ROWS WIDE...



A TON OF DISCING WEIGHT

You can disc down 4 rows of heavily-rooted hybrid corn stalks with one pass through the field. The big Allis-Chalmers No. 213 Disc Harrow works 12½ feet wide... mulches crop residue... leaves field level. Tractor steers easily with all its wheels running between rows.

TRACTION BOOSTER system cuts wheel slippage. Sealed anti-friction BAL-PAK bearings provide lighter draft, better discing. Choice of smooth or cutaway blades.

TRACTION BOOSTER and BAL-PAK are Allis Chalmers trademarks

ALLIS-CHALMERS 
SALES AND SERVICE

L. H. Brubaker
Lancaster, Pa.

Nissley Farm Service
Washington Boro, Pa.

Snavelys Farm Service
New Holland, Pa.

Mann & Grumelli Farm Serv.
Quarryville, Pa.

R. S. Weaver
Stevens, Pa.

N. G. Myers & Son
Rheems, Pa.

L. H. Brubaker
Lititz, Pa.

Livestock Summary

Slaughter steers were steady in Chicago at the close of the market last week. Cows were 25 cents higher, canner to utility grades active. Bulls and vealers steady.

Stockers and feeders about steady.

Hogs were active and steady on barrows and gilts, sows steady to strong.

Spring lambs 50 cents to a dollar lower and yearlings weak to a dollar lower.

Receipts of cattle, calves and sheep were off from the preceding week at the 12 major livestock markets. Only hogs showed a gain with some 14,000 more head being offered than a week preceding.

High choice and prime 1,225 steers brought \$26.50, choice to low-prime 1,050 to 1,100 lbs. \$25.25 and \$25.50, good and average choice \$20 to \$24.50, a few average choice 875 lbs. heifers \$22.75.

Standard and good \$16.50 to \$21.

Barrows and gilts, 230-260 lbs. brought \$18.85 to \$19, a deck of 290 pounders also \$19. A lot of 206 pound and 223 pound slaughter pigs went at \$19.25.

In the West Virginia feeder cattle country stocker cows and calves were bringing from \$70 to \$125 a head, and stocker steers from \$15.50 to 20.50 a hundred weight.

Here are other prices as re-

(Continued to page three)

Lancaster Market: Supplies Down 13 Per Cent From Last Week

By DAVID S. LORENSON

Federal-State Market News Service

CATTLE Three days 2,922, week ago 3,320. Following last week's sharp reduction in supplies three days this week were 13 per cent smaller than a week ago. Part of the decline in numbers could be attributed to a slightly smaller showing of local fed cattle but largely due to decreased movement of grass cattle from southern states.

Fed steers average choice to prime mostly steady with last Wednesday, standard, good and low choice strong to 50 cents higher, cows 25-50 cents higher, bulls fully steady. The movement of stockers and feeders was considerably improved this week and by late Wednesday clearance the best in several weeks. Stocker and feeder prices held fully steady with last Wednesday.

Receipts comprised around 45 per cent stockers and feeders and ten per cent cows. Approximately 45 loads slaughter steers were on sale. Bulk choice fed steers 1,000-1,300 lbs. \$23.25-25.75, high choice and mixed high choice and prime \$26-27, load prime 1,400 lb. steers \$27 and load about same weight \$27.75. Good and low choice fed steers \$21-23, standard and low

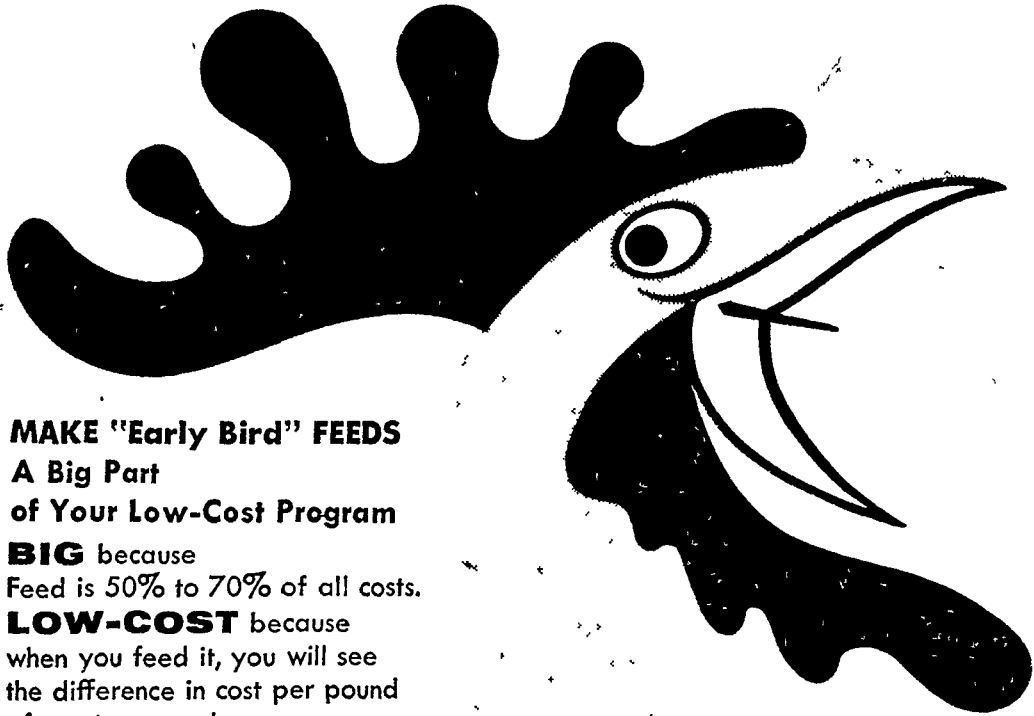
good grass and shortfed steers \$18-20.50.

Odd small lots standard, good and average choice heifers \$17-22.50. Bulk utility and commercial cows \$13.75-15.75, canners and cutters \$10-14.50, mostly \$10.50 and up. A few high yielding cutters to 15. Utility and commercial bulls 20.50 down, cutters \$15-16. Bulk medium and good stocker and feeder steers and light yearlings 550-1,050 lbs. \$18-20.50. A few good grade feeding steers to \$22, load 663 lb. good and choice yearlings \$23 and load 845 lb. mostly choice feeding steers \$23.25. Common stockers and feeders \$15-17.50.

CALVES: 870, week ago 875. Veal calves in uneven market, high choice and prime strong to 50 cents higher, average choice and below steady to weak. Bulk good and choice vealers 140-220 lbs. \$23-28, high choice and prime \$28.50-31, utility and standard grades \$15-22.

HOGS: 1,775, week ago 1,285. Barrows and gilts unevenly 50-75, instances \$1 lower than last Wednesday, sows fully 50 cents lower. Bulk barrows and gilts mixed U S 1-3, 190-240 lbs. in Wednesday's trade \$19.25-19.50, a few lots No. 1 and 2, 200-220 lbs. \$20.

(Continued on Page Three)



MAKE "Early Bird" FEEDS

A Big Part
of Your Low-Cost Program

BIG because

Feed is 50% to 70% of all costs.

LOW-COST because

when you feed it, you will see the difference in cost per pound of meat or per dozen eggs... in your favor!

It's a Lancaster County honest-quality feed, made carefully and priced so you can make more.

Make Good with "Early Bird" Feeds...

In bags or bulk, to Suit Your Needs.



MILLER & BUSHONG, INC.

Manufacturers of Fine Feeds Since 1875

ROHRERSTOWN, PENNA.