

Broilers Top at 20.75 Cents; 19.02 Average at Lancaster Exchange

LANCASTER—A top of 20 3/4 cents a pound for broilers was paid to Glenn Deardorff and Miller & Bushong for 3,000 birds at the Sept. 12 auction at the Lancaster Poultry Exchange.

The average price paid for 138,400 broilers sold was 19.02 cents with the range being from 18 1/2 cents to the 20 3/4 cents top.

In addition to the broilers the following birds were sold: a lot of 2,100 Leghorn fowl, 15 1/4 cents; two lots, 1,700 capettes, 29 1/4 and 30 cents; a lot of 650 pullet capettes, 28 cents; and a lot of 800 cockerel capettes, 30 cents.

At last years corresponding sales 172,700 birds averaged 19.2 cents.

During the month of August 555,200 broilers have been sold at the Exchange for an average price of 22.41 cents. In 1956 for the month the average price was 19.88 cents for 503,525 birds and two years ago the average was 28.17 cents for only 498,630 broilers.

Here is the Sept. 12 sale by lot number, seller with grower in parenthesis, amount and breed, age in weeks and days, buyer and price.

1. Fruitville Farm (Abram Shank), 1,100 White Vantress, 9-6,

Walter Lehman, 19 cents. 2. Fruitville Farm (Abram Shank), 5,600 White Vantress, 9-6, Victor F. Weaver Inc., 19 1/4 cents. 3. Fruitville Farm (Abram Shank), 7,800 White Vantress, 9-6, Victor F. Weaver Inc., 19 cents. 4. Carl R. Hess, 500 White Cornish Cross, 9-3, Carl B. Risser, 19 1/2 cents. 5. Rodney Miller, 1,000 White Vantress-Arbor Acres cockerels, 9-2, College Hill Poultry, 19 cents.

6. Elmer Leaman, 2,000 White Vantress, 10-1, Carl B. Risser, 19 1/2 cents. 7. Eber Hess, 3,000 White Vantress, 11-3, no sale, 19 cents bid. 8. Henry Longenecker, 1,600 White Vantress - Arbor Acres, 9, Victor F. Weaver Inc., 18 1/4 cents. 9. Henry Longenecker, 1,700 White Vantress - Arbor Acres, 9, Roy E. Ream, 19 cents. 10. Lester Hess, 1,000 White Vantress-Arbor Acres, 11, Meader's Poultry, 19 1/4 cents.

11. Robert H. Barr, 2,350 White Vantress-Arbor Acres, 9-6, College Hill Poultry, 18 1/2 cents. 12. Manor Farm (Chester Murry), 5,400 White Vantress, 9-2, Victor F. Weaver Inc., 18 1/4 cents. 13. Manor Farm (Chester Murry), 5,000 Indian Rivers, 9-2, Victor F. Weaver Inc., 18 1/4 cents. 14. Manor Farm (Chester Murry), 5,000 In-

Midwest Markets

CHICAGO, Sept. 17 (AMS)—Estimated salable receipts show 8,500 cattle, 200 calves, 7,500 hogs and 1,000 sheep offered.

All weights and grades of slaughter steers and heifers slow, with the general market weak to 50 cents lower; steers, average choice and below, weak to 50 cents lower, heifers the same, cows 25 cents higher. Bulls and vealers steady.

Stockers and feeders are slow with prices weak.

High prime steers topped at \$29; choice to low-prime heifers ranged from \$23.75 to 24.25

Hogs are steady to 25 cents lower on barrows and gilts, sows a quarter higher; 200-225 lbs., \$18.75 to 19.25. Fifty-five head at 268 lbs. and 15 head of 215 pounders went at \$19.50. 180-195 lb. barrows and gilts, \$18-18.75; sows, 285-300 lbs., \$19

In the 12 major mid-west markets, receipts Tuesday were as follows. Cattle, 60,800; calves, 7,200; hogs, 72,900, and sheep, 24,300.

Compared with the preceding week, cattle, calf and sheep numbers are down, but hogs showed an appreciable increase.

1. Dan R. Myer, 5,000 White Vantress, 9-5, Walter C. Mellinger, 19 1/4 cents

2. Dan R. Myer, 5,000 White Vantress, 9-2, Harry H. Weaver Jr., 19 1/4 cents. 17. John V. Erb, 5,500 Indian Rivers, 9-2, no sale, 18 1/2 cents bid. 18. John V. Erb, 5,000 Indian River Whites, 9-2, Meader's Poultry, 19 1/4 cents. 19. John V. Erb, 5,000 Indian Rivers, 9-2, Harry H. Weaver Jr., 19 1/4 cents. 20. John V. Erb, 5,500 Indian Rivers, 9-2, College Hill Poultry, 18 1/4 cents.

21. Christian E. Beiler, 1,000 White Vantress, 10-2, J. Robert Charles, 19 cents. 22. Miller & Bushong (Paul Livengood), 1,900 White Vantress, 11-1, John N. Thomas, 20 1/4 cents. 23. M&B (Richard Thompson), 5,000 White Vantress, 9-6, S. E. Davis, 19 1/4 cents. 24. M&B (Glenn Deardorff), 3,000 White Vantress, 10-2, Roy E. Ream, 20 1/4 cents. 25. M&B (Lloyd Ream), 4,500 White Vantress-Arbor Acres, 9-2, Starr Poultry, 19 cents

26. M&B (Frank Garman), 1,500 Indian Rivers, 10, Victor F. Weaver Inc., 18 1/4 cents. 27. M&B (John Mowrey), 4,500 White Vantress, 9-2, Meader's Poultry, 19 cents. 28. M&B (Robert Harnish), 7,000 White Vantress, 9-2, Victor F. Weaver Inc., 19 cents. 29. M&B (Christ L. Herr), 2,000 White Vantress capettes, 14, no sale, 21 cents bid. 30. M&B (Christ L. Herr), 2,000 White Vantress capettes, 14, no sale, 24 1/4 cents bid.

31. M&B (Stanley Carpenter), 8,000 White Vantress, 10-3, H. W. Longacre Inc., 19 cents. 32. Andrew N. Miller, 6,000 White Vantress, 10-5, Roy E. Ream, 19 1/4 cents. 33. Morgantown Feed & Grain (Lester High), 2,200 White Cornish Cross, 10-5, Roy E. Ream, 19 1/4 cents. 34. Morgantown Feed (Leroy Lapp), 5,000 White Vantress, 9-6, 5,000 White Vantress, 9-6, withdrawn. 35. Morgantown Fe (Leroy Lapp), 5,000 White Vantress, 9-6, withdrawn

36. Lloyd H. Dreider, 1,250 Martin's Whites, 10, Roy E. Ream, 19 cents. 37. Milton K. Horst, 900 White Vantress, 9-5, no sale, 18 1/2 cents bid. 38. Wenger's (John H. Wenger), 1,200 White Vantress capettes, 14-5, College Hill Poultry, 30 cents. 39. Wenger's (M. M. Wenger), 500 White Vantress capettes, 14-5, Carl B. Risser, 19 1/4 cents.

40. Robert H. Barr, 2,100 Leghorn fowl, 16 months, Carl B. Risser, 15 1/4 cents. 41. Robert H. Barr (J. Clayton Charles), 4,000 White Vantress, 10, College Hill Poultry, 18 1/2 cents. 42. Roy Landis, 2,000 White Vantress, 9-6, Walter C. Mellinger, 19 1/4 cents. 43. Glenn H. Herr, 800 White Vantress cockerel capettes, 14, Carl B. Risser, 20 cents. 44. Glenn H. Herr, 650 White Cornish pullet capettes, 14, Carl B. Risser, 18 cents.

45. M&B (Arthur Powl), 7,000 Indian Rivers, 9-6, C. F. Manbeck Inc., 19 cents. 46. M&B (R. C. Garman), 9,000 White Vantress, 9, Victor F. Weaver Inc., 18 1/4 cents. 47. M&B (Richard Thompson), 5,000 White Vantress, 9-6, Victor F. Weaver Inc., 19 cents.

Lancaster Market Reflects Weak Meat Demand in Eastern Centers

By DAVID S. LORENSEN
Federal-State Market News Service

Receipts week to date: Cattle, 3,320; calves, 733; hogs, 1,285; sheep, 395

Receipts week ago: Cattle, 4,830; calves, 1,021; hogs, 1,412; sheep, 643.

CATTLE: Liberal supplies of all species of livestock on major markets this week coupled with a slow to weaker trend in wholesale dressed meats at Eastern consuming centers were depressing factors in the livestock markets. Both hogs and cattle were subject to further declines at most markets with lower grade cattle, or standard, good and low choice the hardest to move.

Three day receipts of cattle at the 12 major markets were smaller than a year ago while hog numbers were about the same.

At Lancaster, slaughter steers were \$50-100 lower than last Wednesday, with grass and short-fed kinds at the full decline. Cows sold around 25 cents higher, bulls about steady. Stockers and feeders in sympathy with the fed cattle market were an additional 50 cents lower in a very slow trade. Fed steers, choice grade, sold from \$23.50-25.50, good grades from \$21.50-23 early, some late sales good grade grass and short-fed steers \$20-21, mixed standard and low good \$18-20. A few lots high choice and mixed choice and prime steers earned \$25.75-26.75, one load prime 1,250 lbs. \$27.25 on Monday. A few utility, standard and good heifers turned from \$15.50-21. Bulk utility and commercial cows \$13.25-15.50, canners and cutters \$9.75-14, high yielding cutters to \$14.50. Utility and commercial bulls \$16.50-20, cutters down to \$15.50.

Bulk of the medium and good stocker and feeder steers 600-1,050 lbs. cashed from \$18 to \$20, a few lots and loads high good grade \$21-22, load mixed good and low choice 875 lbs. \$22.50. Common stock steers \$15.50-17

CALVES: Veal calves mostly steady. Good and choice \$23-28, prime up to \$30. Utility and standard \$15-22.

HOGS: Barrows and gilts around \$1.50 lower than last Wed-

nesday. Sows scarce about steady. In Wednesday's trade barrows and gilts mixed 1, 2 and 3, 190-240 lbs. sold from \$20. to \$20.50, a few lots No. 1 and 2 200-220 lbs. \$21, only a few head \$21.50 to local small killers. Sows early in the week mixed 1-3, 270-550 lbs. brought \$14.50-19.

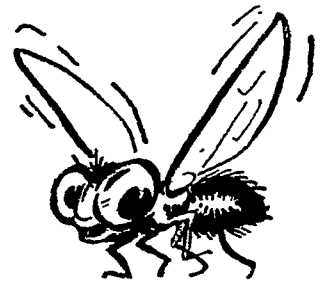
SHEEP: Slaughter lambs held mostly steady with last Wednesday. Offerings graded mostly low choice and below. Bulk good and low choice native spring lambs \$21.50-24, utility and low good \$16-21.50, cull lambs down to \$13.

LIVE POULTRY

PHILADELPHIA — Sept. 18 — Unsettled. Demand fair and very selective on size and quality. Supplies of all classes were in excess of immediate requirements. Most sales were forced in a buyers' market

Wholesale selling prices No. 1 and fancy quality. Broilers light type under 3 lb., 14 cents; broilers and fryers heavy type 3-4 lb., 22-24 cents. Pullets 4 1/2 lb. and over, 30-32 cents; 4 to 4 1/2 lb. 28-30 cents. Hens, heavy type 17-22 cents, light type 10-16 cents. Old roosters 5-12 cents

KILLS FLIES!



KLEEN-KOW Cattle Fly Spray

with NEW REPELLENT RC-11

For space spraying use KLEEN KOW AEROSOL

1 or 3 lb. Disposable ask your dealer

ROCKLAND CHEMICAL CO. WEST CALDWELL, N. J.

ATTENTION FARMERS!

300 chicks 1 week old. Give your chickens a boost with Pex.

25 lbs	\$2.65	Safety Zone Signs	.06
50 lb	\$4.45	No Trespass	.48 doz.
Horse Feed	\$3.85	Starter	\$4.15
Hog Feed	\$3.70	Grower	\$4.15
16% Dairy	\$3.40	Quality Mash	\$4.05
Dog Meal	\$8.00	Scratch D. P.	\$3.75
Rabbit Pellets	\$4.80	Corn	\$3.40
Bran	\$2.95	Gloves	.35 - \$1.50

Now you can buy corn at \$65.50 per ton in car door orders

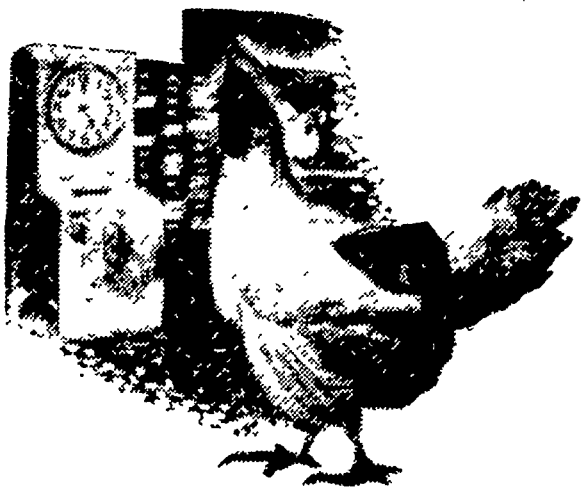
ALTMAN'S CASH FEED STORE

WILLIS H. WEAVER MANAGER

947 Harrisburg Ave. Phone Lanc. EX 4-7715

10c per hundred discount on half ton lots or more.

PRICES SUBJECT TO CHANGE — WE DELIVER



Hens ain't human...

A good layer never knows when to stop work... as long as she's getting a good, high-energy feed.

Red Rose Laying Feeds give your flock the nutrients hens need for high production and body maintenance. Red Rose Laying Mash and Red Rose Complete Laying Ration are now even further improved—with more calories, animal fat and usable vitamins to give you maximum egg production at lower feed costs.

For more egg profit, see your Red Rose Dealer about a complete Red Rose feeding program.

RED ROSE Laying Feeds

MOUNTVILL FEED SERVICE JOHN H. BONHOLTZER

R. D 2, Columbia, Pa. R. D. 4, Lancaster, Pa.

LEROY GEIB, EST. SNADER'S MILL

R. D 2, Manheim, Pa. R. D. 1, Stevens, Pa.

JOSEPH M. GOOD & SON I. B. GRAYBILL & SON

R. D 1, Bird-in-Hand, Pa. Refton, Pa.

WALTER & JACKSON, INC. Christiana, Pa.

HARVEST SALE SAVINGS 'til Sept. 30th

- 10-Hole Square Nest \$10.95
- 20 ft. Extension Ladder \$20.05
- Barbed Wire 4 pt. 12 1/2 gauge . \$10.50
- 251 White 1 coat Exterior Paint \$5.25 gal.
- Anti - Freeze (Methanol) 77c gal.
- Permanent ... \$1.85 gal.

FALL TIRE SALE

- ★ 33 1/3 % Discount
- ★ Lifetime Guarantee
- ★ No trade-in required
- ★ Road Hazard Warranty

Sept. 20th to Oct. 31st

Complete line of Tires for Car - Truck - Tractor



Lancaster—Manheim—New Holland—Quarryville